



Angela D. Alsobrooks
County Executive

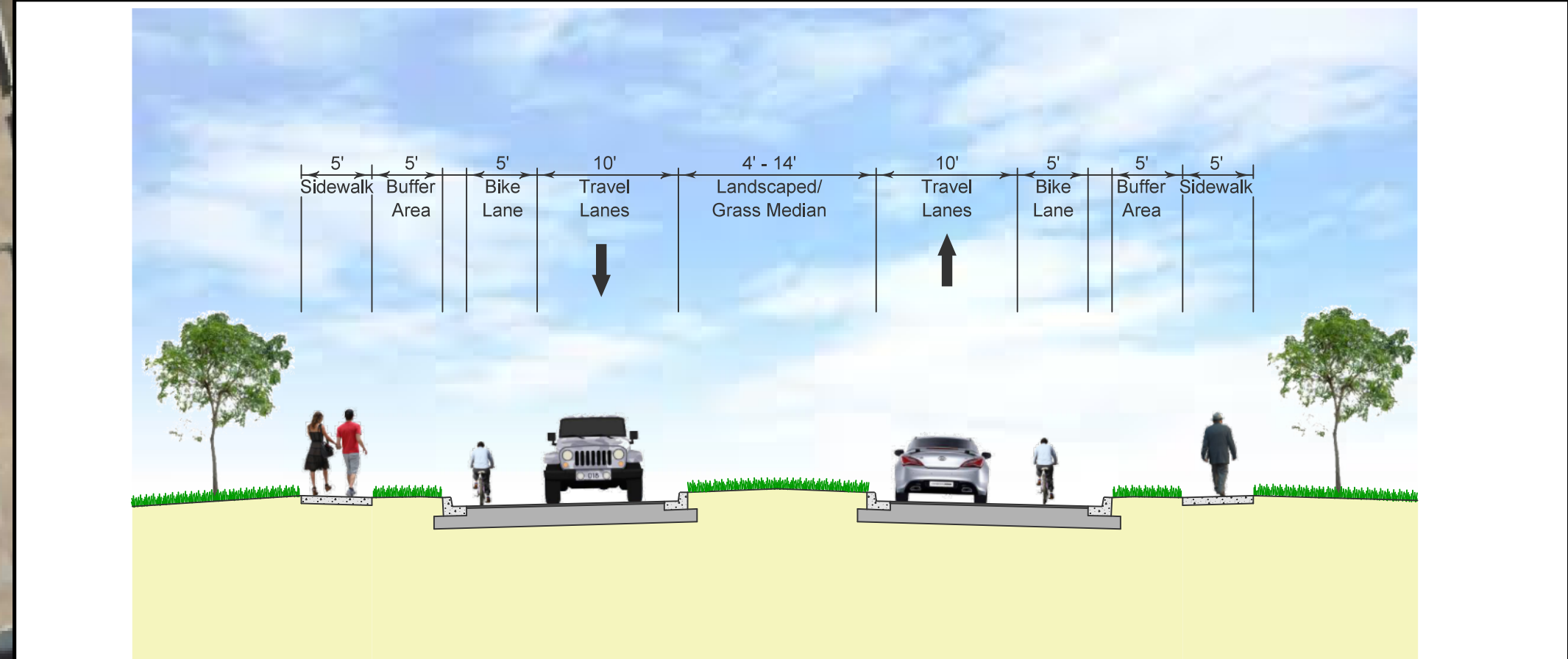
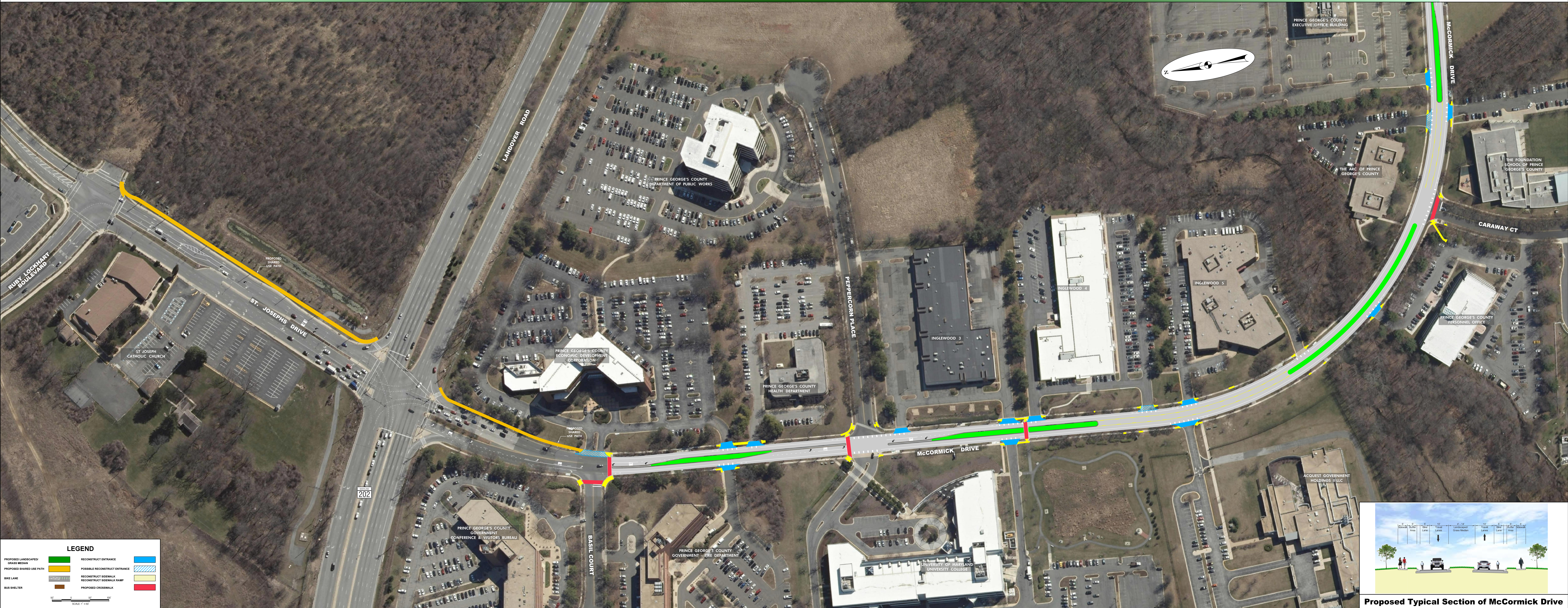
Prince Georges
county
experience
expand
explore

Largo Area Roadway Improvement Project - McCormick Drive from MD 202 to Lottsford Road - 65% Design

WALLACE
MONTGOMERY
ENGINEERS PLANNERS ARCHITECTS CONSTRUCTION MANAGERS



Terry L. Bellamy
Director



Proposed Typical Section of McCormick Drive