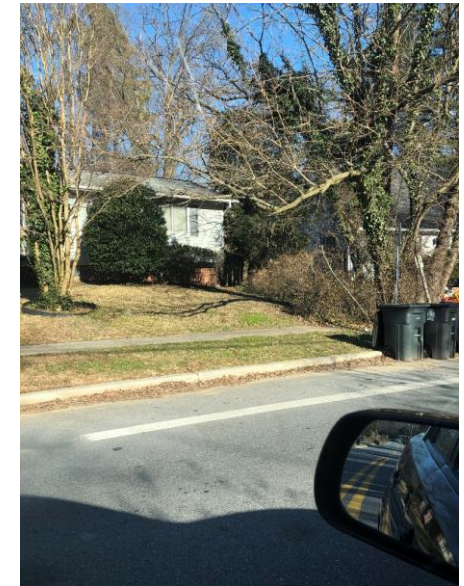


COOL SPRING ROAD / ADELPHI ROAD PEDESTRIAN AND BICYCLE ACCESS IMPROVEMENTS



PUBLIC INFORMATION MEETING Project Introduction and Kick-off January 14, 2021



Angela D. Alsobrooks
County Executive



Terry L. Bellamy
Director

THANK YOU FOR PARTICIPATING

Cool Spring Road / Adelphi Road Pedestrian and Bicycle Access Improvements Public Information Meeting

THIS MEETING WILL BE RECORDED

Virtual Meeting Expectations and Technical Tips



Your microphone will be muted when we start the meeting.



We have set aside time for public comments, please wait until the comment period.
During the comment/discussion portion of our meeting, you have the following options:



- Raise your hand if you want to speak
- OR
- Use “Chat” to write your comments



- Due to the time limitation, we will respond via email if we are unable to answer any of your questions

Having issue with connection:

Cell Phone/Landline may be a better connection than the computer audio

Poll Number 1

How did you learn about tonight's meeting?

- Social Media
- Flyers
- Email
- Other



Angela D. Alsobrooks
County Executive



Terry L. Bellamy
Director

AGENDA

Welcome and Introduction (10 Minutes)

- Purpose of the Meeting

Vision Zero Prince George's Initiative (5 Minutes)

Scope of the Project (15 Minutes)

- Project Area, Challenges, Project Process Steps

Public Comments / Project Discussion (30 Minutes)

- Polls
- Question and Answer Session



Angela D. Alsobrooks
County Executive



Terry L. Bellamy
Director

PROJECT TEAM INTRODUCTION

Project Lead Prince George's County Department of Public Works and Transportation

- Nima Upadhyay, Senior Planner
- Hadi Quaiyum, Traffic Engineering and Safety, Division Chief
- Stephanie Walder, Project Manager
- Andrea Lasker, Vision Zero Prince George's Coordinator
- Tiffany W. Jennings, Bike and Pedestrian Program Manager
- Tiffany Minor, Community Liaison
- Zachary W. Bishop, GIS Specialist
- Marisol Peralta, Community Developer
- Victor Weissberg, Major Project Manager

Other government agency participants please introduce yourself in the chat box

Consultant Team

- Mead & Hunt (reg'l HQ in Columbia, MD)
 - Bryon White, PE, PTOE, Senior Project Manager, Transportation
 - Survey: Mercado Consulting – Ashton, MD



Angela D. Alsobrooks
County Executive



Terry L. Bellamy
Director



PURPOSE OF THE MEETING

- To provide information about the project and gather information from residents on how they commute to University of Maryland main campus (Future site of a Purple Line station)
- To address concerns we have heard from community residents about pedestrian and bike connectivity
- The scope of the project is to provide potential safer walking and bicycling access for the residents of the Cool Spring Neighborhood to the University of Maryland Complex

Poll Number 2

Do you support increased non-vehicular connectivity to University of Maryland Main Campus (and the future Purple Line station site)?

- Yes
- No
- Other

What priority would you give for connecting the neighborhood to the University of Maryland Main Campus with enhanced pedestrian and bicycle facilities and to the future Purple Line station?

- Very High
- High
- Low
- Not a priority



Angela D. Alsobrooks
County Executive



Terry L. Bellamy
Director

VISION ZERO

The County Executive launched Vision Zero Prince George's on July 25, 2019 as a county-wide strategy to eliminate traffic-related serious injuries and deaths by the year 2040. Positioned as a collaborative community model, Vision Zero Prince George's focuses on supportive road and transportation design coupled with education and safety measures for all roadway users.

In the Vision Zero strategy, everyone in the community shares responsibility for ensuring the safety of all roadway users, whether they are pedestrians, bicyclists, motorcyclists, transit users or drivers.



VISIONZERO
prince george's

www.VisionZeroPrinceGeorges.com

Poll Number 3

Do you currently feel safe while walking in your community?

- Very Safe
- Somewhat Safe
- Not Very Safe
- I do not walk in the neighborhood

Do you currently feel safe while biking in your community?

- Very Safe
- Somewhat Safe
- Not Very Safe
- I do not bike in the neighborhood



Angela D. Alsobrooks
County Executive



Terry L. Bellamy
Director

Poll Number 3 Continued

As someone who walks and/or bikes around this neighborhood, what is your top priority for traffic safety improvements?

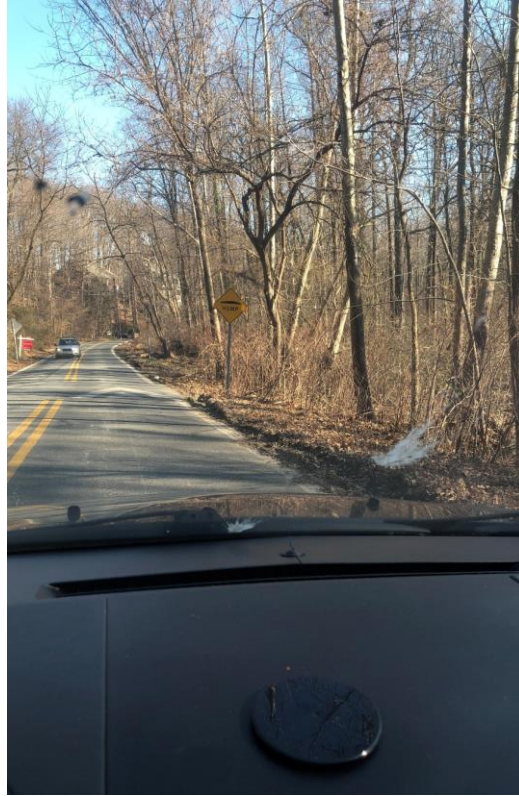
- Adding Bike and Pedestrian infrastructure
- Reducing the Roadway Travel Speed
- Adding streetlights
- Other



Angela D. Alsobrooks
County Executive



Terry L. Bellamy
Director

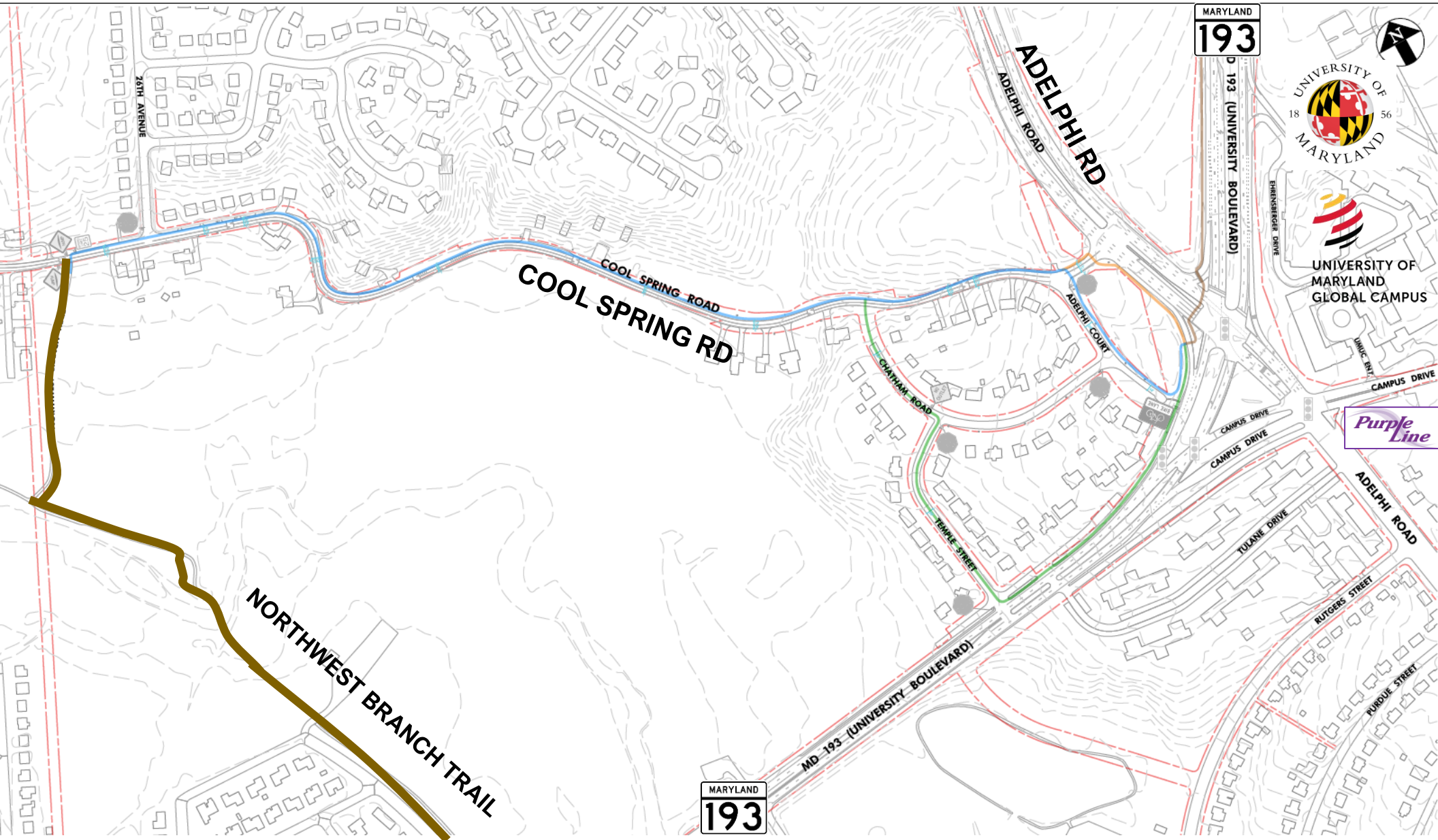


PROJECT SCOPE AND GOALS

- Project Funding
 - \$80K Grant from Metropolitan Washington Council of Governments' Transportation
 - Transportation Land-Use Connections Program
- Grant request covers following Scope:
 - Develop 30% Design Drawings for providing bike and pedestrian access to Connect the Cool Spring Neighborhood from the NW Branch Trail to UMD and the Purple Line station



PROJECT MAP AND POTENTIAL ALIGNMENTS



CHALLENGES



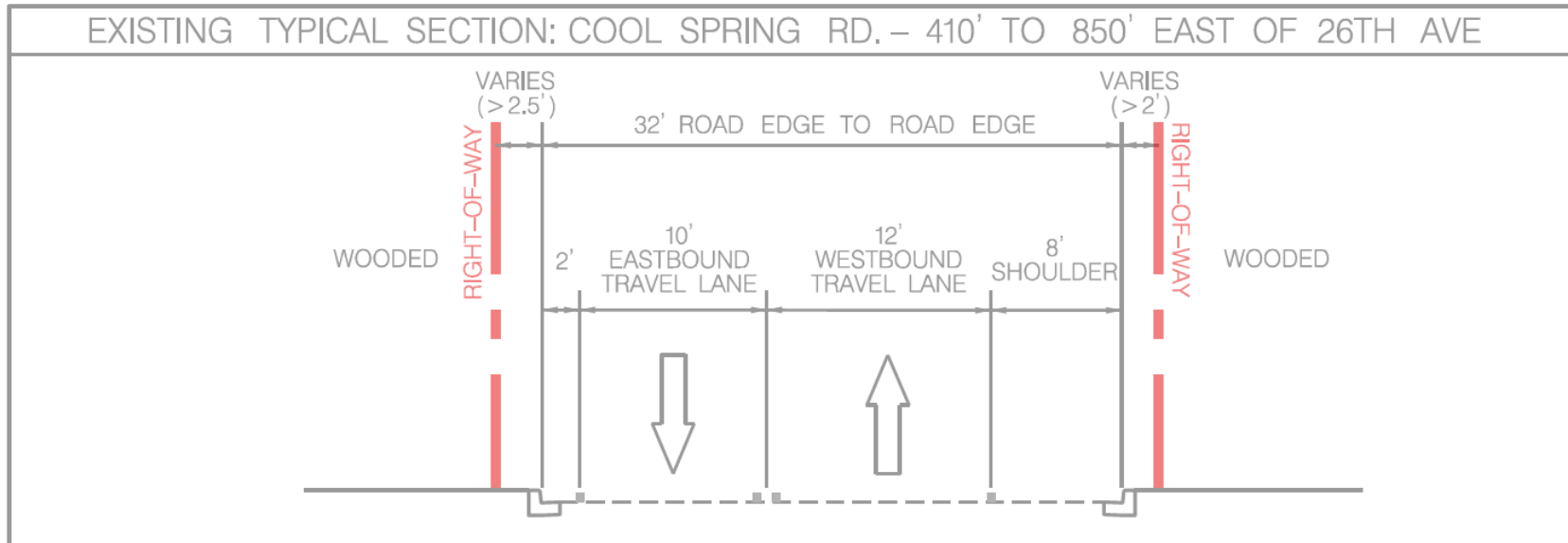
Limited Right of Way



Stormwater Management/ Drainage Issue



Crossing Adelphi Road



Poll Number 4

Before Covid-19, how often did you travel to the University of Maryland Campus?

- Multiple times a Day
- Once a Day
- Weekly
- Monthly
- Never

Currently, what is your mode of travel to and from the UMD Main Campus?

- Walk
- Bike
- Transit
- Vehicle



Angela D. Alsobrooks
County Executive



Terry L. Bellamy
Director

Poll Number 4- Continued..

How will you access the Adelphi Road – UMGC - UMD Purple Line Station when it opens?

- Walk
- Bike
- Bus
- Drive
- Other

What is your main reason for travel to the University of Maryland Campus?

- Work/Classes
- Leisure (i.e., UMD athletic events, etc.)
- Shopping
- Other

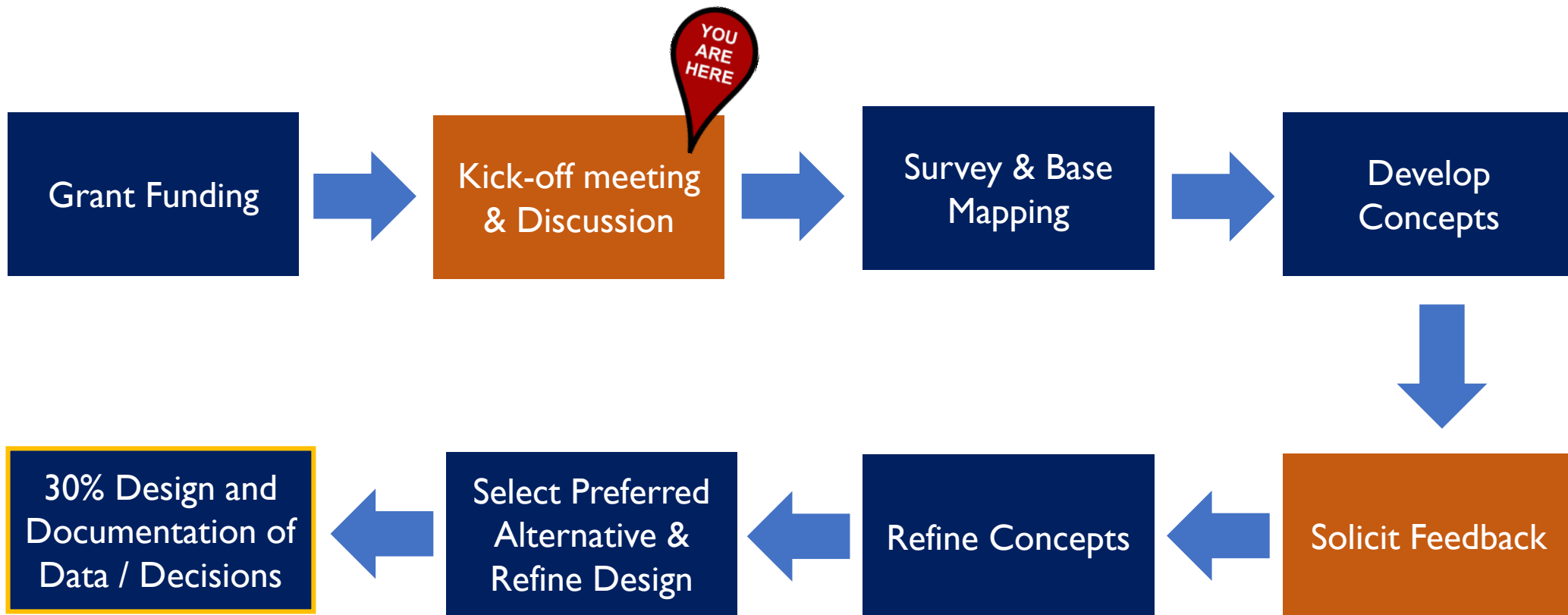


Angela D. Alsobrooks
County Executive



Terry L. Bellamy
Director

PROJECT STEPS



June 30, 2021



Angela D. Alsobrooks
County Executive



Terry L. Bellamy
Director

Public Discussion (Poll Number 5)

Do you use the North West Branch Trail?

- Multiple times a day
- Once a Day
- Weekly
- Monthly
- Never

What type of bike infrastructure you recommend to connect your neighborhood to North West Branch trail?

(You can select more than one answer)

- Bike Lane
- Share the road with bike
- Other



Angela D. Alsobrooks
County Executive



Terry L. Bellamy
Director

Public Discussion Poll - Continued...

When this project is implemented, how often do you see yourself walking or biking to the University of Maryland Main Campus?

- Multiple times a day
- Once a Day
- Weekly
- Monthly
- Never
- Other



Angela D. Alsobrooks
County Executive



Terry L. Bellamy
Director

COMMENTS AND DISCUSSION

Please submit your comments by February 15, 2021

- Project Manager, Nima Upadhyay

nupadhyay@co.pg.md.us



Angela D. Alsobrooks
County Executive



Terry L. Bellamy
Director