

2018 WATER AND SEWER PLAN

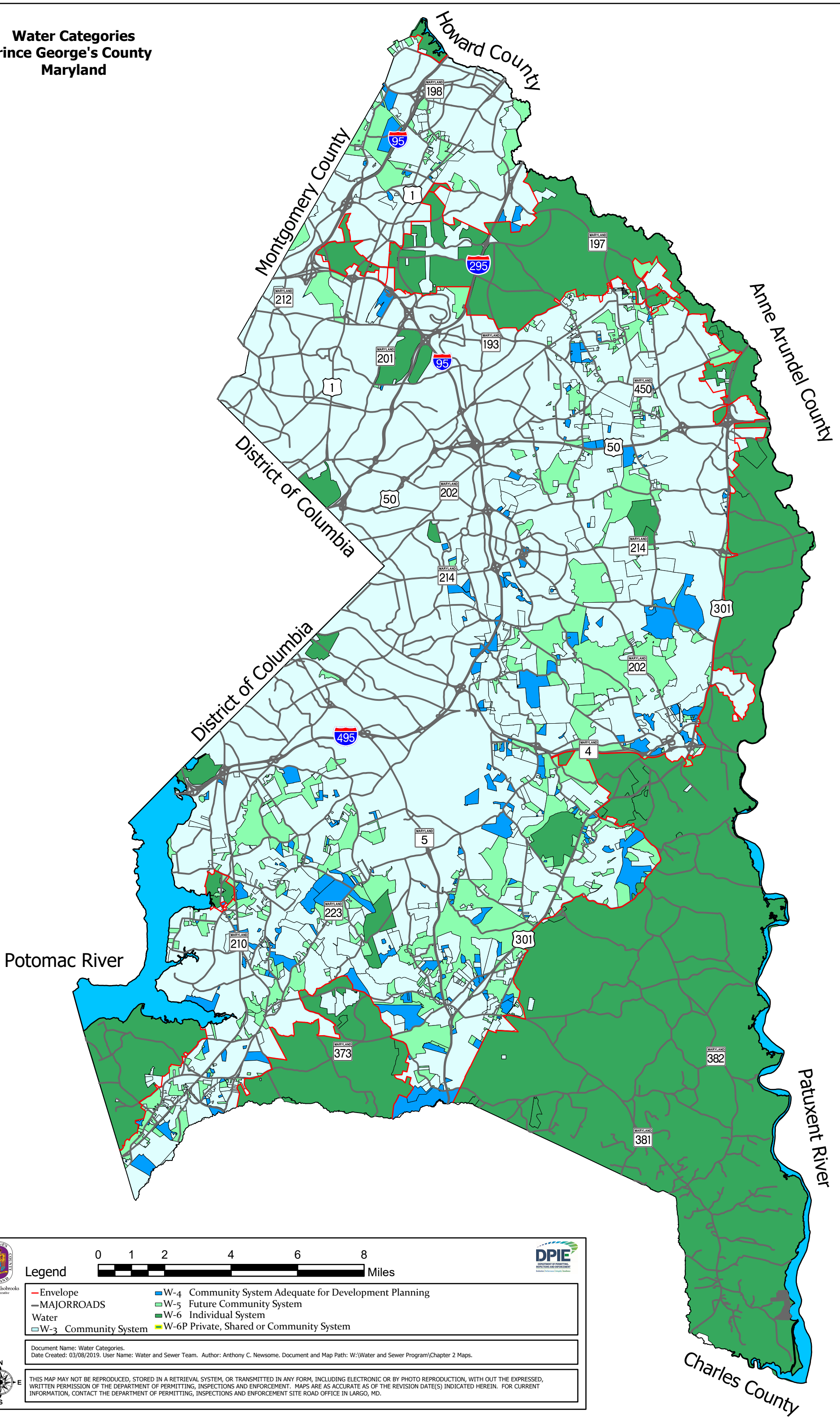
APPENDIX C


***2018 Water and Sewer Plan
Water Category Map***

2018 WATER AND SEWER PLAN


This page intentionally left blank


**Water Categories
Prince George's County
Maryland**





0 1 2 4 6 8
Miles





Legend	
— Envelope	■ W-4 Community System Adequate for Development Planning
— MAJORROADS	■ W-5 Future Community System
Water	■ W-6 Individual System
□ W-3 Community System	■ W-6P Private, Shared or Community System

Document Name: Water Categories.
Date Created: 03/08/2019. User Name: Water and Sewer Team. Author: Anthony C. Newsome. Document and Map Path: W:\Water and Sewer Program\Chapter 2 Maps.

THIS MAP MAY NOT BE REPRODUCED, STORED IN A RETRIEVAL SYSTEM, OR TRANSMITTED IN ANY FORM, INCLUDING ELECTRONIC OR BY PHOTO REPRODUCTION, WITH OUT THE EXPRESSED, WRITTEN PERMISSION OF THE DEPARTMENT OF PERMITTING, INSPECTIONS AND ENFORCEMENT. MAPS ARE AS ACCURATE AS OF THE REVISION DATE(S) INDICATED HEREIN. FOR CURRENT INFORMATION, CONTACT THE DEPARTMENT OF PERMITTING, INSPECTIONS AND ENFORCEMENT SITE ROAD OFFICE IN LARGO, MD.

