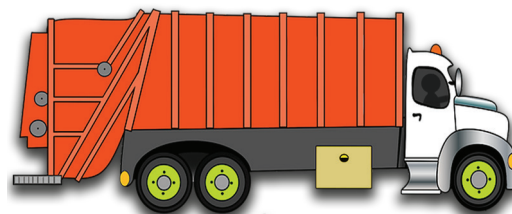


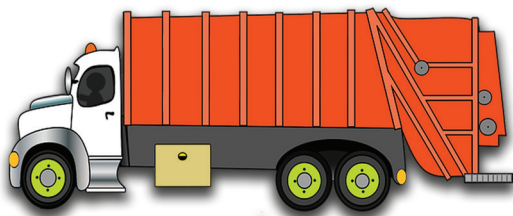
STASH Your TRASH!



This chart will help you find the appropriate place to properly dispose of litter and debris.



VIOLATION	SOLUTION
Dumping tires	Call 311 to schedule a bulky trash pickup of up to four tires per trip. You can always schedule additional pickups to dispose of additional tires.
Storing construction materials	Dispose of construction materials at the Ritchie Land Reclamation Landfill, 2001 Ritchie Road, Upper Marlboro. Vehicles are charged by size. Call 301-350-4059 for details. Mon-Fri, 7:00 AM-4:00 PM
Storing old furniture, broken appliances and fixtures, junk and debris	Two tightly closed bags of household items or two large bulky items, such as a sofa or recliner, may be placed on the curb with your weekly trash. Mattresses must be encased in plastic covers. Call PGC311 to schedule a bulky trash pickup for large appliances.
Keeping large loads of trash that does not qualify for weekly pickup	Transport items to the Brown Station Road Sanitary Landfill, 11611 White House Road, Upper Marlboro. Call 301-952-7625 for details. Mon-Sat, 8:00 AM-3:30 PM
Harboring hazardous materials and old electronics on your property	Take the materials to the Household Hazardous Waste Acceptance Site and Electronics Recycling Acceptance Site, 11611 White House Road, Upper Marlboro. Thur-Sat, 8:00 AM-3:30 PM



For more information, visit the DoE website at environment.mypgc.us.



Prince George's County
Department of Permitting,
Inspections and Enforcement

9400 Peppercorn Place
Largo, Maryland 20774
301-636-2000

