



Angela D. Alsobrooks  
County Executive

# Site Road: Site Development Grading Permit — ePlan Workflow

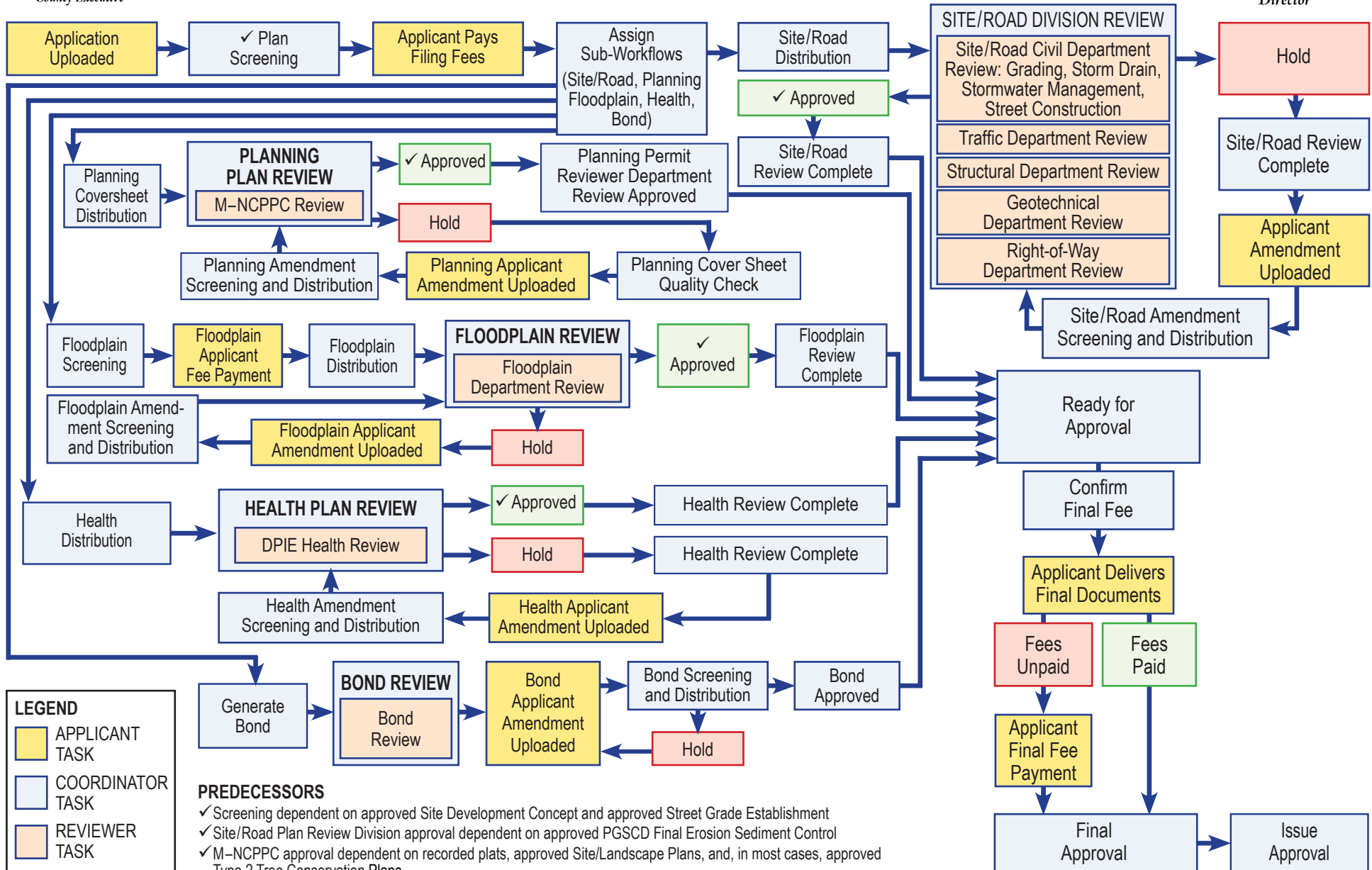
Depending on the Scope of Work, a Project Will Be Reviewed by Several Agencies

Both Inside and Outside of DPIE Prior to Permit Issuance

(Below is the ePlan Workflow Chart of the Process)



Dawit Abraham, P.E.  
Director



**LEGEND**

- APPLICANT TASK
- COORDINATOR TASK
- REVIEWER TASK

**PREDECESSORS**

- ✓ Screening dependent on approved Site Development Concept and approved Street Grade Establishment
- ✓ Site/Road Plan Review Division approval dependent on approved PGSCD Final Erosion Sediment Control
- ✓ M-NCPPC approval dependent on recorded plats, approved Site/Landscape Plans, and, in most cases, approved Type 2 Tree Conservation Plans