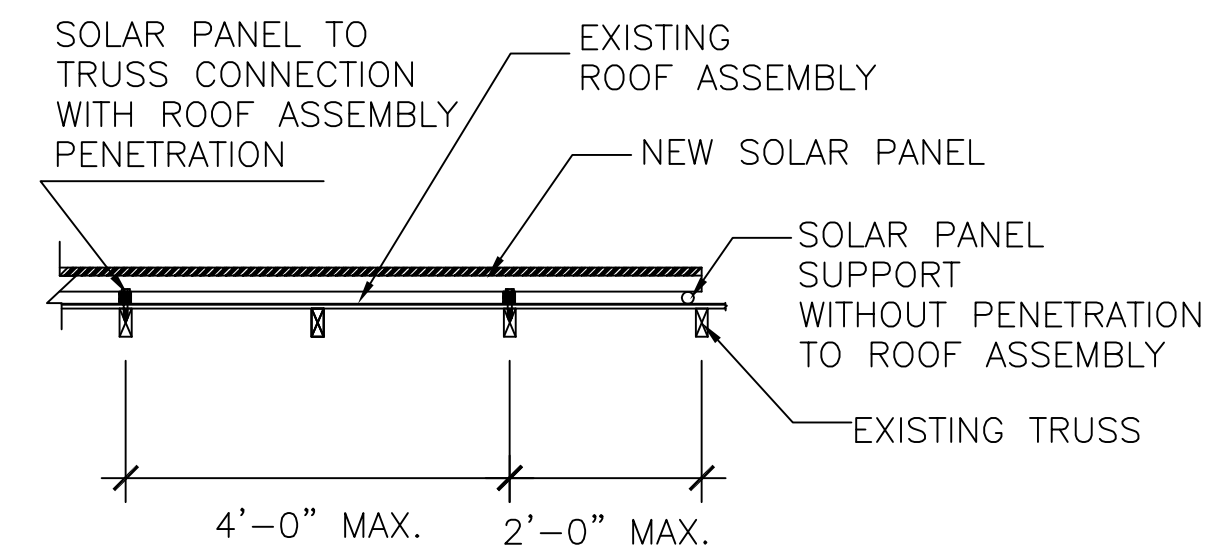
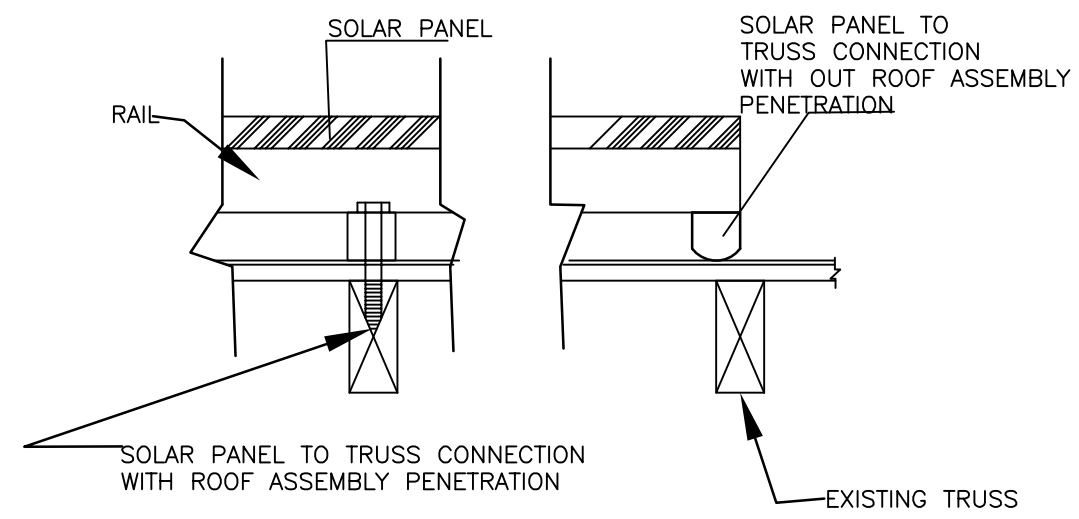


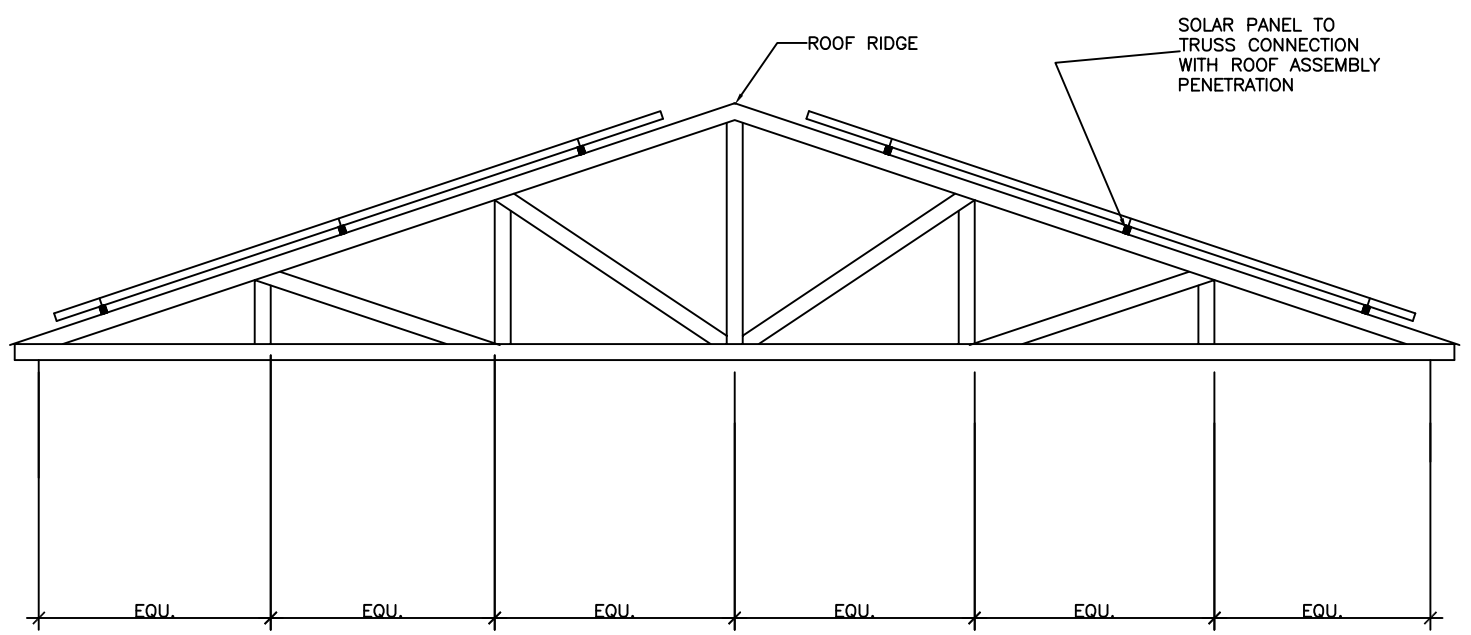
SOLAR PANEL & ROOF CONNECTION LAYOUT



TYPICAL CONNECTION DETAIL



DETAILS AT PENETRATED AND NON PENETRATED LOCATIONS



TYPICAL TRUSS SECTION

**Residential Roof Mounted Solar Panel Load Distribution design criteria:**

- Design criteria are based on the Truss/Rafter spacing of 24 inches.
- The spacing between anchorage points of the rails/panel shall be 48 inches (max.) staggered.
- The maximum solar panel/rail cantilevered from anchorage point shall be 12 inches (max.).
- If the solar panel cantilevered from anchorage point more than 12 inches, gravity load bearing supports shall be installed (without penetration to roof assembly).
- The layout shows an example of load distribution on existing roof.

**NOTE:** Existing roof that does not meet the current building code snow load design shall be analyzed and strengthened as required.

Prince George's County and DPIE Logo to be inserted here with disclaimer note.