



Angela D. Alsobrooks
County Executive



Michael D. Johnson, P.E.
Director

Metzerott Road, Phase 2 CIP Project

Adelphi Road to University Boulevard (MD 193)

Proud to Pave the Way
Multi-Modal Projects on the High Injury Network
Sub-project #7 of 7

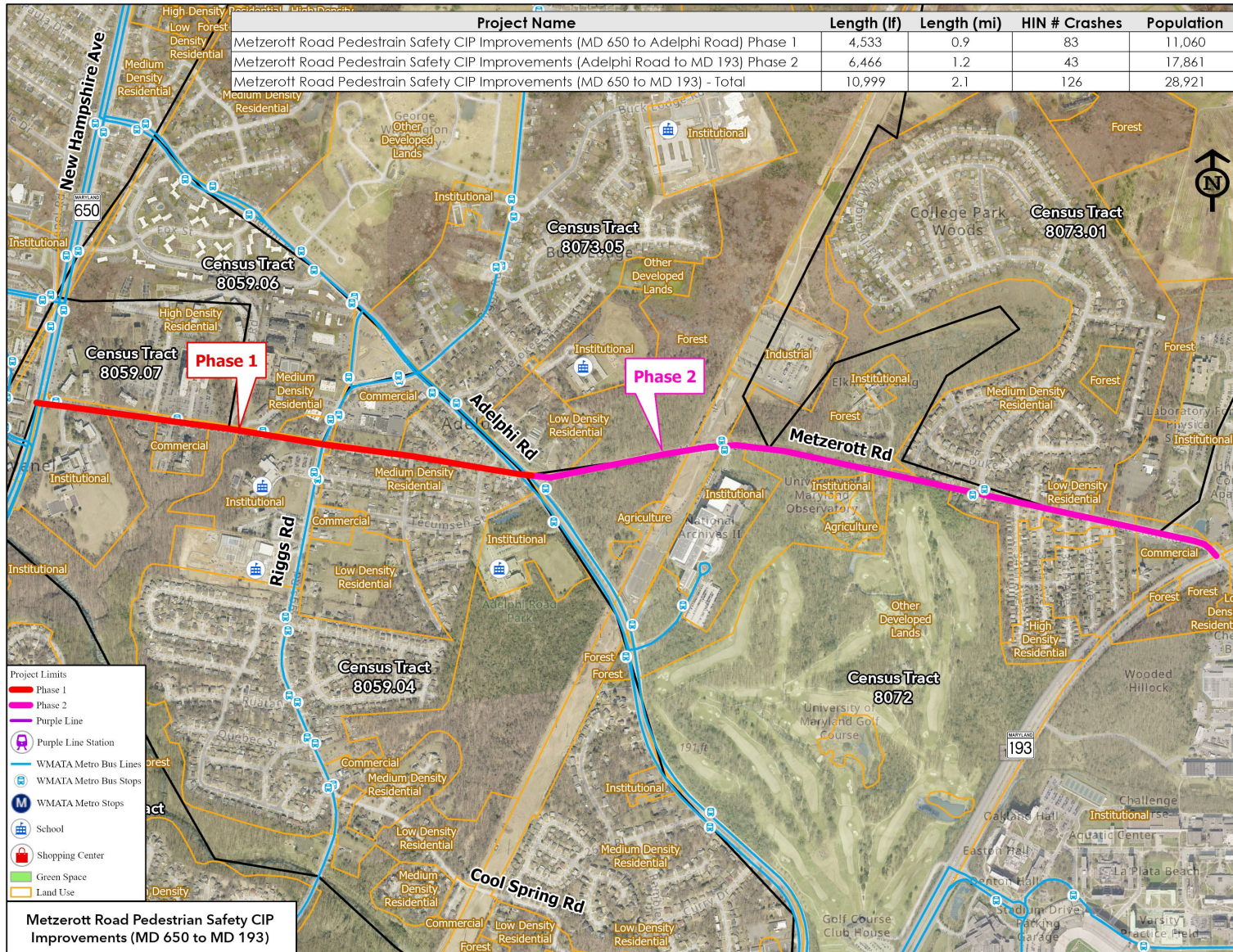


Angela D. Alsobrooks
County Executive

PROJECT LIMITS



Michael D. Johnson, P.E.
Director

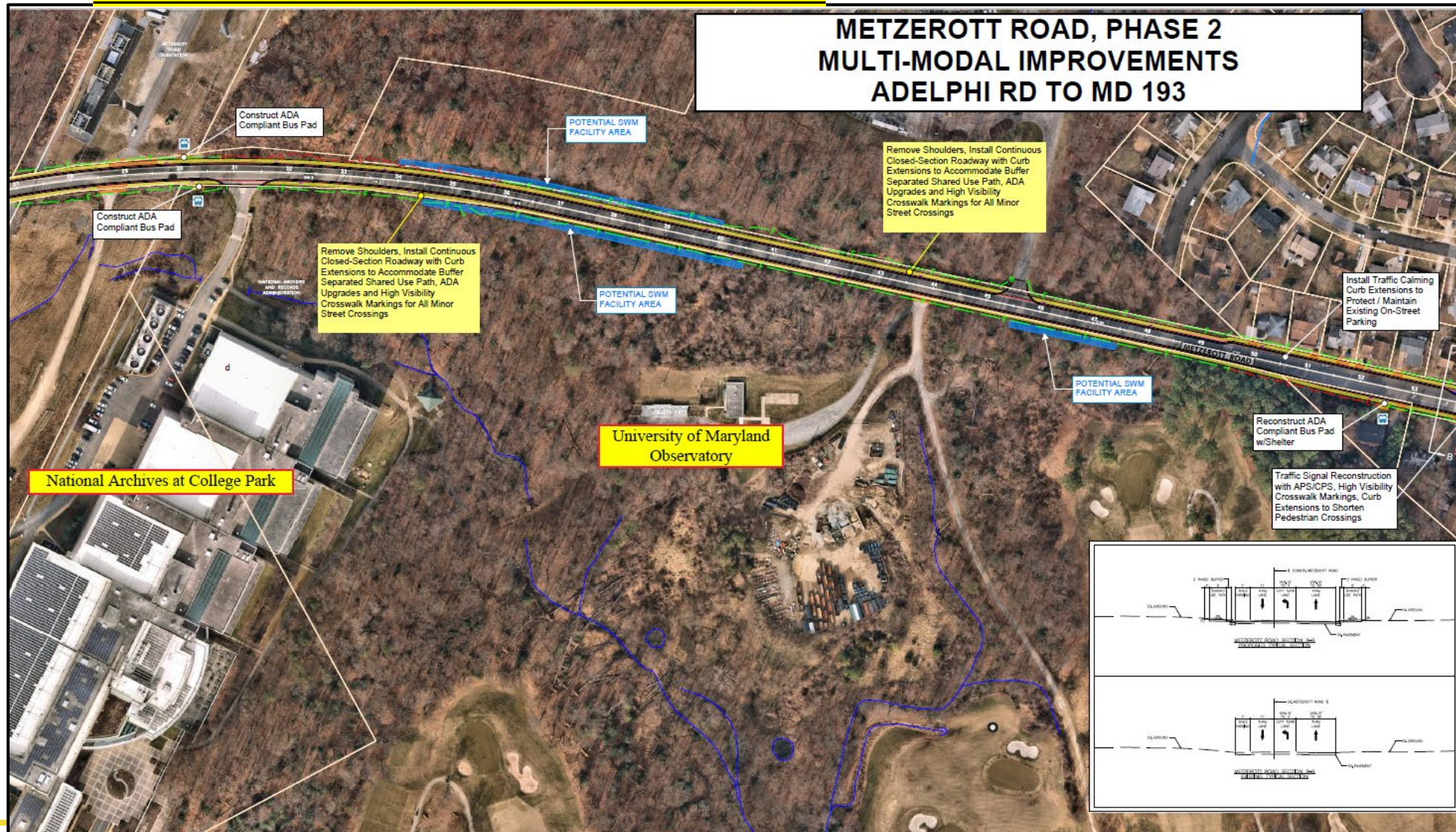




SAMPLE PLANS



PROVIDE NEW CONTINUOUS SHARED-USE PATHS





Angela D. Alsobrooks
County Executive

CONTACT INFORMATION



Michael D. Johnson, P.E.
Director

POINTS OF CONTACT DURING DESIGN:

Erv Beckert, P.E.

Chief, Highway and Bridge Design Division

Mobile: 240.508.9610

Email: ETBeckert@co.pg.md.us

Stephanie Walder

Design Project Manager

Mobile: 240-204-0353

Email: SAWalder@co.pg.md.us

POINT OF CONTACT DURING CONSTRUCTION:

Dwight Joseph

Chief, Construction Division

Direct: 301. 883. 5633

Email: djoseph@co.pg.md.us



Angela D. Alsobrooks
County Executive



Michael D. Johnson, P.E.
Director

Stay connected with us!



Prince George's County
Department of Public Works & Transportation

Follow us @PGCountyDPWT to stay up to date!

