



Angela D. Alsobrooks  
County Executive



Michael D. Johnson, P.E.  
Director

# Langley Park Pedestrian-Bike Access Project

---

**15<sup>th</sup> Ave.; Keokee St.; Kanawha St.; Jasmine Ter.; and New Riggs Rd.**

**Proud to Pave the Way  
Multi-Modal Projects on the High Injury Network  
Sub-project #2 of 7**

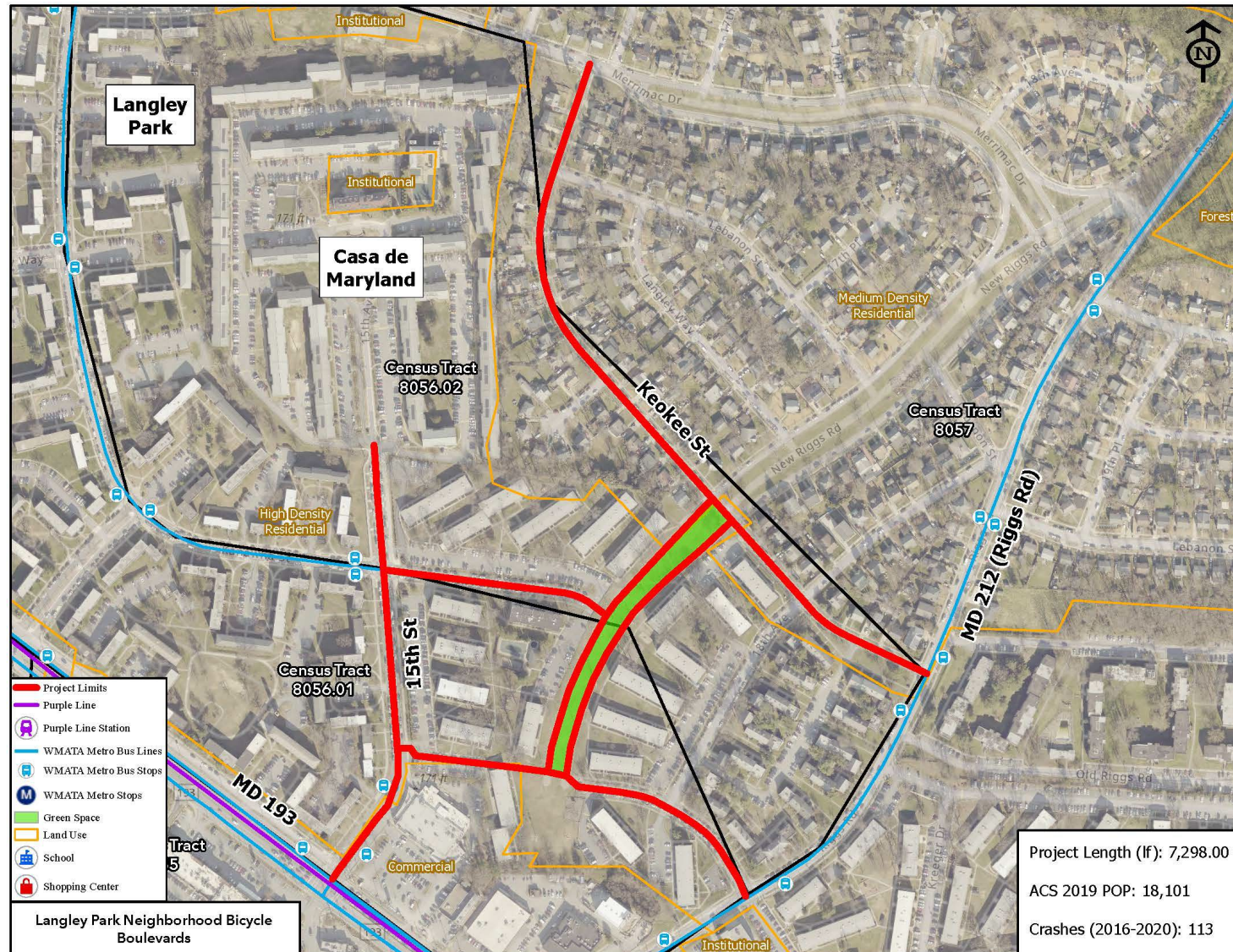


Angela D. Alsobrooks  
County Executive

# PROJECT LIMITS



Michael D. Johnson, P.E.  
Director







Angela D. Alsobrooks  
County Executive

# CONTACT INFORMATION



Michael D. Johnson, P.E.  
Director

## POINTS OF CONTACT DURING DESIGN:

**Erv Beckert, P.E.**

Chief, Highway and Bridge Design Division

Mobile: 240.508.9610

Email: [ETBeckert@co.pg.md.us](mailto:ETBeckert@co.pg.md.us)

**Stephanie Walder**

Design Project Manager

Mobile: 240-204-0353

Email: [SAWalder@co.pg.md.us](mailto:SAWalder@co.pg.md.us)

## POINT OF CONTACT DURING CONSTRUCTION:

**Dwight Joseph**

Chief, Construction Division

Direct: 301. 883. 5633

Email: [djoseph@co.pg.md.us](mailto:djoseph@co.pg.md.us)



Angela D. Alsobrooks  
County Executive



Michael D. Johnson, P.E.  
Director

*Stay connected with us!*



Prince George's County  
Department of Public Works & Transportation

Follow us @PGCountyDPWT to stay up to date!

