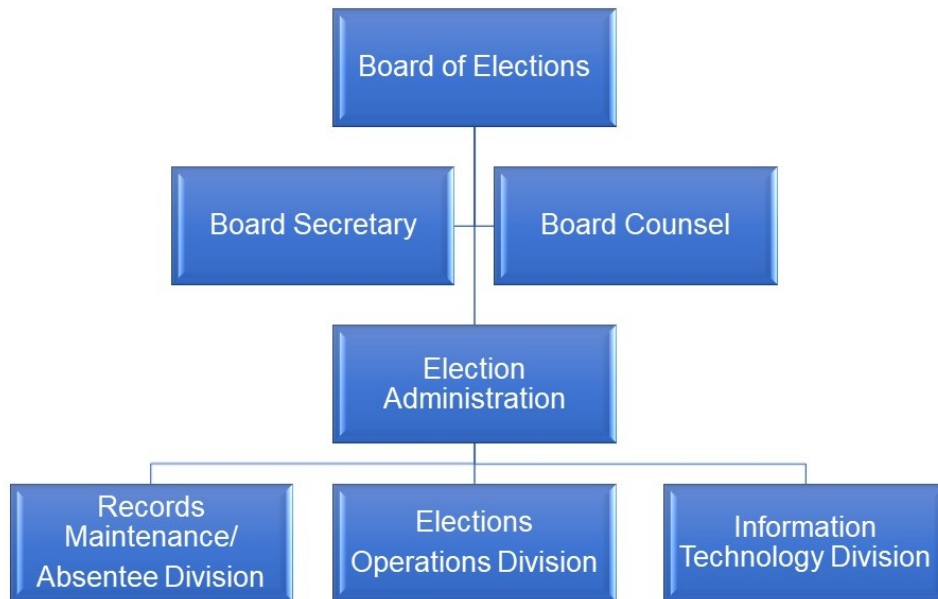


Board of Elections



MISSION AND SERVICES

The Board of Elections provides election services to County citizens in order to ensure registered voters are able to vote in accordance with federal, State and County election laws.

CORE SERVICES

- Assisting customers with voter registration
- Voter awareness
- Preparing for and conducting the Gubernatorial and Presidential elections
- Canvassing of ballots
- Certifying election results

FY 2025 KEY ACCOMPLISHMENTS

- Conducted two Special Elections for County Council At-Large and the County Executive (including a Council District seat).
- Conducted the 2024 Presidential General Election.
- Sustained essential Board of Elections functions by successfully filling critical positions.
- Secured a permanent location for canvassing and extended judge training.

STRATEGIC FOCUS AND INITIATIVES FOR FY 2026

The board’s top priorities in FY 2026 are:

- Prepare for and conduct of the 2026 Gubernatorial Primary Election.
- Increase the percent of Prince George’s County residents registered to vote in all election cycles and increase voter awareness by utilizing public service announcements, radio, television and social media, digital media and print media as a means to provide information to citizens regarding the election, voter registration and availability of online voter registration, early voting, same day registration and the voting equipment.
- Recruiting and training election judges.
- Continue efforts to reduce the number of duplicate voters registered in various states utilizing the Electronic Registration Information Center (ERIC).

FY 2026 BUDGET SUMMARY

The FY 2026 proposed budget for the Board of Elections is \$10,805,800, a decrease of -\$2,304,900 or -17.6% below the FY 2025 approved budget.

Expenditures by Fund Type

Fund Types	FY 2024 Actual		FY 2025 Budget		FY 2025 Estimate		FY 2026 Proposed	
	Amount	% Total	Amount	% Total	Amount	% Total	Amount	% Total
General Fund	\$12,072,835	100.0%	\$13,110,700	100.0%	\$13,300,900	100.0%	\$10,805,800	100.0%
Grant Funds	—	0.0%	—	0.0%	—	0.0%	—	0.0%
Total	\$12,072,835	100.0%	\$13,110,700	100.0%	\$13,300,900	100.0%	\$10,805,800	100.0%

Reconciliation from Prior Year

	Expenditures
FY 2025 Approved Budget	\$13,110,700
Increase Cost: Fringe Benefits — Increase in the fringe benefit rate from 13.0% to 14.9% to align with projected costs	\$112,900
Increase Cost: Compensation - Mandated Salary Requirements	57,500
Add: Compensation - New Position — Funding for one General Clerk 4G position within the Records Management section	49,200
Decrease Cost: Compensation — Decrease in compensation costs for overtime and reduction of seasonal employees for gubernatorial election support	(352,500)
Decrease Cost: Operating — Net decrease in costs for telephone, printing, advertising, training and equipment rental to align with projected costs	(902,800)
Decrease Cost: Operating - Contracts — Decrease in operating contracts to align with projected costs	(1,269,200)
FY 2026 Proposed Budget	\$10,805,800

STAFF AND BUDGET RESOURCES

Authorized Positions	FY 2024 Budget	FY 2025 Budget	FY 2026 Proposed	Change FY25-FY26
General Fund				
Full Time - Civilian	31	33	34	1
Full Time - Sworn	0	0	0	0
Subtotal - FT	31	33	34	1
Part Time	0	0	0	0
Limited Term	0	0	0	0
TOTAL				
Full Time - Civilian	31	33	34	1
Full Time - Sworn	0	0	0	0
Subtotal - FT	31	33	34	1
Part Time	0	0	0	0
Limited Term	0	0	0	0

Positions By Classification	FY 2026		
	Full Time	Part Time	Limited Term
Administrative Aide	3	0	0
Administrative Assistant	1	0	0
Administrative Specialist	1	0	0
Budget Management Analyst	1	0	0
Citizen Service Specialist	3	0	0
Data Coordinator	7	0	0
Election Administrator	1	0	0
General Clerk	14	0	0
Supervisory Clerk	1	0	0
Systems Analyst	2	0	0
TOTAL	34	0	0

Expenditures by Category - General Fund

Category	FY 2024 Actual	FY 2025 Budget	FY 2025 Estimate	FY 2026 Proposed	Change FY25-FY26	
					Amount (\$)	Percent (%)
Compensation	\$8,491,944	\$7,924,700	\$9,996,100	\$7,678,900	\$(245,800)	-3.1%
Fringe Benefits	738,458	1,028,800	1,028,800	1,141,700	112,900	11.0%
Operating	2,842,433	4,157,200	2,276,000	1,985,200	(2,172,000)	-52.2%
Capital Outlay	—	—	—	—	—	
SubTotal	\$12,072,835	\$13,110,700	\$13,300,900	\$10,805,800	\$(2,304,900)	-17.6%
Recoveries	—	—	—	—	—	
Total	\$12,072,835	\$13,110,700	\$13,300,900	\$10,805,800	\$(2,304,900)	-17.6%

In FY 2026, compensation expenditures decrease -3.1% under the FY 2025 budget primarily due to the decrease in funding for temporary staffing and overtime. Funding is provided to support one additional General Clerk 4G position within the Records Maintenance section. The additional position will aid the Board of Elections in remaining compliant with all standards set by the state of Maryland. Compensation costs include funding for 34 full time employees. Funding is also provided for 3,000 election judges, 480 chief judges and 672 other temporary staff. Fringe benefit expenditures increase 11.0% above the FY 2025 budget due to the increase in the fringe benefit rate from 13.0% to 14.9% to align with projected costs.

Operating expenditures decrease -52.2% under the FY 2025 budget primarily due to the renegotiation of the security and legal contracts. Funding is provided to support the anticipated 2026 gubernatorial primary election expenses, including advertising, equipment leases, office/ building rental fees and general operating supplies.

SERVICE DELIVERY PLAN AND PERFORMANCE

Goal 1 — To provide election services to citizens to ensure all eligible citizens have an opportunity to vote in a primary or general election.

Objective 1.1 — Increase the percentage of County residents that are registered to vote.

FY 2030 Target	FY 2023 Actual	FY 2024 Actual	FY 2025 Estimated	FY 2026 Projected	Trend
97%	85%	90%	90%	91%	↑

Trend and Analysis

The current trend shows voter registration rates at 90% by the end of FY 2025. With increased voter outreach activities, the Board projects that voter registration will be at 97% by FY 2030. As of December 2024, there were 669,744 registered voters in Prince George's County. According to the U.S. Census, Prince George's County's population over the age of 18 as of July 1, 2023 is 740,891. The Board is preparing for the rollout of a new electronic pollbook system. The State Board of Election's goal is to procure a new system in FY 2028.

Performance Measures

Measure Name	FY 2022 Actual	FY 2023 Actual	FY 2024 Actual	FY 2025 Estimated	FY 2026 Projected
Workload, Demand and Production (Output)					
Website visits	60,015	82,690	38,102	140,743	40,000
County population 18 years or older	708,108	748,108	740,891	742,108	742,000
Registered voters	639,290	638,346	669,744	675,000	680,000
Impact (Outcome)					
Voters registered to vote in all election cycles	91%	85%	90%	90%	91%

Objective 1.2 — Maintain average wait time for voters on Election Day and during early voting at less than 15 minutes.

FY 2030 Target	FY 2023 Actual	FY 2024 Actual	FY 2025 Estimated	FY 2026 Projected	Trend
N/A	N/A	10:00	10:00	10:00	↓

Trend and Analysis

During the 2024 Presidential Election cycle, the Board utilized 39 convenient drop box locations across the County for voters to return their ballots directly to the Board instead of the postal service. The trend is to ensure that voters have increased opportunities to exercise their right to vote. The Board will re-evaluate these locations for the 2026 Gubernatorial Election to ensure these locations still meet the needs of the voters. In the 2024 Presidential Primary Election, voter wait times during early voting and election day were zero to five minutes. During the 2024 Presidential General Election, these wait times rose to 60 minutes due to voters choosing to vote outside of their assigned polling places. The Board will have to evaluate this trend during the 2026 Gubernatorial election to see if this is the new norm.

Performance Measures

Measure Name	FY 2022 Actual	FY 2023 Actual	FY 2024 Actual	FY 2025 Estimated	FY 2026 Projected
Resources (Input)					
Voting units	7	562	554	554	554
Polling places	1	240	240	240	240
Election judges recruited and trained	37	2,860	3,500	4,000	3,500
Workload, Demand and Production (Output)					
Voters during Primary election	n/a	137,151	546,852	n/a	250,000
Voters during General election	n/a	243,065	n/a	608,803	639,243
Votes cast during early voting: Primary election	n/a	30,175	135,435	n/a	50,000
Votes cast during early voting: General election	n/a	52,135	n/a	403,201	n/a
Efficiency					
Election judges per polling place	n/a	30	35	35	35
Impact (Outcome)					
Average waiting time for voters to vote by voting machine during each election (minutes)	n/a	n/a	n/a	n/a	n/a
Wait time during the Presidential General election (average)	n/a	n/a	n/a	n/a	n/a
Wait time during the Gubernatorial Primary (average)	n/a	10:00	n/a	n/a	n/a
Wait time during the Gubernatorial General election (average)	n/a	n/a	20:00	n/a	n/a
Wait time during the Presidential Primary election (average)	n/a	n/a	n/a	n/a	n/a