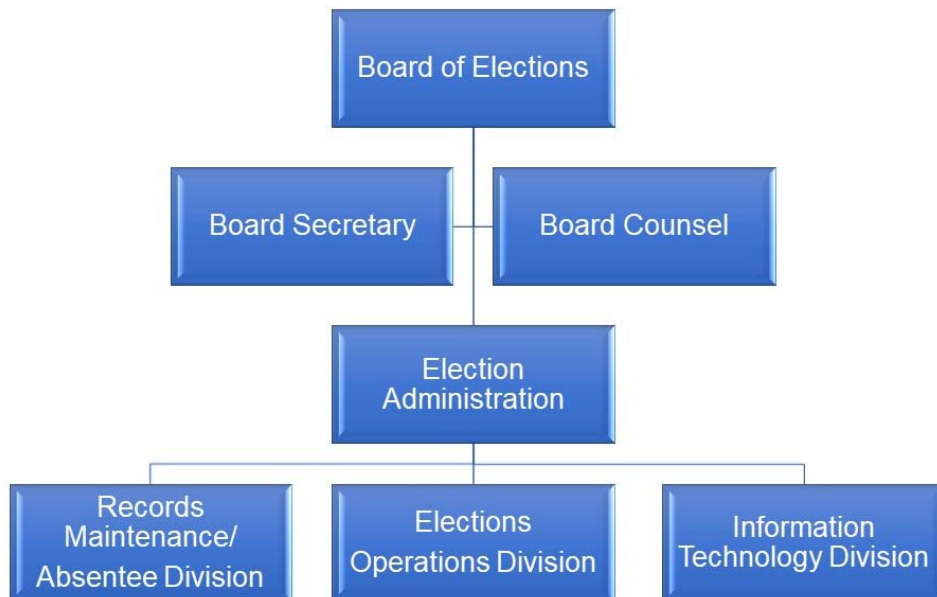


# Board of Elections



## MISSION AND SERVICES

The Board of Elections provides election services to County citizens in order to ensure registered voters are able to vote in accordance with federal, State and County election laws.

### CORE SERVICES

- Poll site identification and operational management (during the early voting period and on Election Days)
- Voting equipment maintenance
- Voter registration, records management and informational updates
- Candidate filing
- Community outreach

### FY 2023 KEY ACCOMPLISHMENTS

- Successfully conducted the 2022 Primary Election.
- Successfully conducted the Primary Election recount.

### STRATEGIC FOCUS AND INITIATIVES FOR FY 2024

The board’s top priorities in FY 2024 are:

- Increase the percentage of Prince George’s County residents registered to vote in all election cycles.
- Plan for the implementation and rollout of electronic poll books.
- Reduce the number of duplicate voters registered in various states utilizing the Electronic Registration Information Center (ERIC).

- Recruit and train election judges.
- Comply with the Voting Rights Act Language Access Policy (Section 203).

## FY 2024 BUDGET SUMMARY

The FY 2024 proposed budget for the Board of Elections is \$11,508,900, a decrease of -\$416,800 or -3.5% below the FY 2023 approved budget.

### Expenditures by Fund Type

Fund Types	FY 2022 Actual		FY 2023 Budget		FY 2023 Estimate		FY 2024 Proposed	
	Amount	% Total	Amount	% Total	Amount	% Total	Amount	% Total
General Fund	\$5,314,399	100.0%	\$11,925,700	100.0%	\$12,016,100	100.0%	\$11,508,900	100.0%
Grant Funds	—	0.0%	—	0.0%	—	0.0%	—	0.0%
<b>Total</b>	<b>\$5,314,399</b>	<b>100.0%</b>	<b>\$11,925,700</b>	<b>100.0%</b>	<b>\$12,016,100</b>	<b>100.0%</b>	<b>\$11,508,900</b>	<b>100.0%</b>

### Reconciliation from Prior Year

	Expenditures
<b>FY 2023 Approved Budget</b>	<b>\$11,925,700</b>
<b>Increase Cost: Operating</b> — Increase in funding for contractual security services at early voting centers, drop box locations and cameras in support of the Presidential election	\$731,200
<b>Increase Cost: Operating</b> — Increase in various operating costs in support of the Presidential election including legal services, printing and transportation services, advertising, equipment leases and general operating supplies	393,000
<b>Increase Cost: Operating</b> — Increase in funding allocated for lease costs to support the anticipated expenses for voting center sites for the Presidential election	120,000
<b>Add: Compensation - New Positions</b> — Funding provided for two new positions including a Citizens Services Specialist 3G to support the Board of Elections' compliance to Section 203 of the Voting Rights Act and a Budget Analyst IG position to develop and manage the Board's budget	115,000
<b>Increase Cost: Fringe Benefits</b> — Increase in the fringe benefit rate from 16.3% to 23.0% to align with projected costs as well as funding for two new positions	110,700
<b>Increase Cost: Technology Cost Allocation</b> — Increase in OIT charges based on anticipated countywide costs for technology	4,700
<b>Decrease Cost: Compensation</b> — Net decrease in compensation due to a reduction in funding for temporary staffing to align with the anticipated need to support the Presidential election; this is offset by the annualization of FY 2023 and planned FY 2024 salary adjustments	(1,891,400)
<b>FY 2024 Proposed Budget</b>	<b>\$11,508,900</b>

### STAFF AND BUDGET RESOURCES

Authorized Positions	FY 2022 Budget	FY 2023 Budget	FY 2024 Proposed	Change FY23-FY24
<b>General Fund</b>				
Full Time - Civilian	31	31	33	2
Full Time - Sworn	0	0	0	0
Subtotal - FT	31	31	33	2
Part Time	0	0	0	0
Limited Term	0	0	0	0
<b>TOTAL</b>				
Full Time - Civilian	31	31	33	2
Full Time - Sworn	0	0	0	0
Subtotal - FT	31	31	33	2
Part Time	0	0	0	0
Limited Term	0	0	0	0

Positions By Classification	FY 2024		
	Full Time	Part Time	Limited Term
Administrative Aide	3	0	0
Administrative Assistant	1	0	0
Administrative Specialist	1	0	0
Budget Analyst	1	0	0
Citizen Service Specialist	3	0	0
Data Coordinator	7	0	0
Election Administrator	1	0	0
General Clerk	13	0	0
Supervisory Clerk	1	0	0
Systems Analyst	2	0	0
<b>TOTAL</b>	<b>33</b>	<b>0</b>	<b>0</b>

**Expenditures by Category - General Fund**

Category	FY 2022 Actual	FY 2023 Budget	FY 2023 Estimate	FY 2024 Proposed	Change FY23-FY24	
					Amount (\$)	Percent (%)
Compensation	\$2,861,977	\$7,733,100	\$6,946,500	\$5,956,700	\$(1,776,400)	-23.0%
Fringe Benefits	671,396	1,259,300	1,619,900	1,370,000	110,700	8.8%
Operating	1,781,026	2,933,300	3,449,700	4,182,200	1,248,900	42.6%
Capital Outlay	—	—	—	—	—	
<b>SubTotal</b>	<b>\$5,314,399</b>	<b>\$11,925,700</b>	<b>\$12,016,100</b>	<b>\$11,508,900</b>	<b>\$(416,800)</b>	<b>-3.5%</b>
Recoveries	—	—	—	—	—	
<b>Total</b>	<b>\$5,314,399</b>	<b>\$11,925,700</b>	<b>\$12,016,100</b>	<b>\$11,508,900</b>	<b>\$(416,800)</b>	<b>-3.5%</b>

In FY 2024, compensation expenditures decrease -23.0% below the FY 2023 budget due a reduction in funding for temporary staffing to align with the anticipated need to support the Presidential election. This is offset by an increase in overtime, the annualization of FY 2023 compensation adjustments and planned FY 2024 salary adjustments. Funding is also provided for two new positions including a Citizens Services Specialist 3G to support the Board of Elections' compliance to Section 203 of the Voting Rights Act and a Budget Analyst IG position to assist in the development and management the Board's budget. Compensation costs include funding for 33 full time employees. Funding is also provided for 3,000 election judges, 494 chief judges and 913 other temporary staff. Fringe benefit expenditures increase 8.8% over the FY 2023 budget due to the increase of the fringe benefit rate from 16.3% to 23.0% to align with projected costs including an increase for two new positions added to the position complement.

Operating expenditures increase 42.6% over the FY 2023 budget primarily driven by an increase in the contracts for legal, printing and transportation services, in addition to an increase in advertising, equipment leases, office/building rental fees and general operating supplies based on anticipated expenses for the Presidential election.

## SERVICE DELIVERY PLAN AND PERFORMANCE

**Goal 1** — To provide election services to citizens to ensure all eligible citizens have an opportunity to vote in a primary or general election.

**Objective 1.1** — Increase the percentage of County residents that are registered to vote.

FY 2028 Target	FY 2021 Actual	FY 2022 Actual	FY 2023 Estimated	FY 2024 Projected	Trend
95%	92%	91%	89%	92%	↑

### Trend and Analysis

Same day voter registration was implemented during the 2016 Presidential Elections for early voting and during the 2020 Presidential Elections for Election Day. Citizens of Maryland now have an opportunity to register to vote if they meet specified criteria - possess a valid Maryland driver's license or Maryland issued identification card. As a result of the availability of same day registration, during the 2022 General Election, 449 Prince Georgians registered to vote or updated their address. Citizens now have increased opportunities to participate in the Election process with the invention of online voter registration and the offering of same-day registration. In 2012, prior to online voter registration and same day registration, 82% of county residents registered to vote. The current trend shows voter registration rates above 90% until 2022. In 2022, the registration rate dropped to approximately 87%, however, the rate may increase in upcoming months. As of November 30, 2022, there were 644,637 registered voters in Prince George's County. According to U.S. Census, Prince George's County's population over the age of 18 as of July 1, 2021 is 744,183. Currently, the Board is preparing for the roll out of a new e-pollbook system. The State Board of Elections will procure a new system during FY 2023.

### Performance Measures

Measure Name	FY 2020 Actual	FY 2021 Actual	FY 2022 Actual	FY 2023 Estimated	FY 2024 Projected
<b>Resources (Input)</b>					
Staff dedicated to outreach activities	25	11	5	10	15
<b>Workload, Demand and Production (Output)</b>					
Newspaper advertisements published	0	1	2	0	1
Website visits	71,477	181,610	60,015	100,000	200,000
Outreach events attended	56	19	20	25	35
County population 18 years or older	686,495	689,360	708,366	744,183	750,000
Registered voters	630,749	631,987	639,290	650,000	665,000
<b>Efficiency</b>					
Outreach events attended per staff dedicated to outreach activities	2	2	4	2	2
<b>Impact (Outcome)</b>					
Voters registered to vote in all election cycles	92%	92%	91%	89%	92%

**Objective 1.2** — Maintain average wait time for voters on Election Day and during early voting at less than 15 minutes.

FY 2028 Target	FY 2021 Actual	FY 2022 Actual	FY 2023 Estimated	FY 2024 Projected	Trend
5:00	3:00	n/a	3:00	0:00	↑

### Trend and Analysis

Prince Georgians were encouraged to vote by mail during the 2020 Presidential Election cycle due to the Coronavirus pandemic. Approximately 40% of voters (nearly 240,000) submitted their ballots by mail. The popularity of voting by mail continued during the 2022 Gubernatorial Election cycle, with 47,196 ballots received during the primary election and 68,978 mail-in ballots received during the General Election. In both election cycles, many voters who voted by mail opted to use one of the convenient drop boxes located across the county. The Maryland General Assembly passed legislation to make it easier for some voters to opt to receive vote by mail ballots permanently. Additionally, legislation was passed that allows for a vote by mail special election.

During the Special Election conducted for County Council District 8, most voters, 6,847 (95.8%) for the special primary election and 6,954 (97.6%) for the special general election, cast their ballots by mail. During the 2022 Gubernatorial Election cycle, the Board utilized 38 convenient drop boxes across the County for voters to return their ballots directly to the Board instead of using the postal service. The trend is to ensure that voters have increased opportunities to exercise their right to vote. By offering more ways to vote, the wait times for voters on Election Day and during early voting should decrease. The Primary election was moved to FY 2023 due to redistricting.

As a result, the only elections conducted in FY 2022 were the Special Primary and General elections for County Council District 8. Election Judge recruitment for Fiscal Year 2022 and 2023 was challenging for the Board of Elections, while 3,746 judges were trained in Fiscal Year 2022. With the change in the election date from June to July, the Board experienced a record number of dropouts two weeks prior to the primary election, which left some precincts that require at least 25 judges with 3 judges to open and work the polling site. Please note that although there were 3,746 judges trained in Fiscal Year 2022, only 37 judges served in fiscal year 2022 during the Special Election.

### Performance Measures

Measure Name	FY 2020 Actual	FY 2021 Actual	FY 2022 Actual	FY 2023 Estimated	FY 2024 Projected
<b>Resources (Input)</b>					
Voting units	24	622	7	678	680
Polling places	4	41	1	240	240
Election judges recruited and trained	3,300	1,824	37	3,088	4,000
<b>Workload, Demand and Production (Output)</b>					
Voters during Primary election	242,958	0	n/a	137,671	270,000
Voters during General election	n/a	443,850	n/a	265,158	450,000
Votes cast during early voting: Primary election	n/a	0	n/a	30,115	105,000
Votes cast during early voting: General election	n/a	133,496	n/a	56,211	0
<b>Efficiency</b>					
Election judges per polling place	40	45	n/a	25	35

**Performance Measures** *(continued)*

Measure Name	FY 2020 Actual	FY 2021 Actual	FY 2022 Actual	FY 2023 Estimated	FY 2024 Projected
<b>Impact (Outcome)</b>					
Average waiting time for voters to vote by voting machine during each election (minutes)	3:00	3:00	0:00	3:00	0:00
Wait time during the Presidential General election (average)	n/a	5:00	n/a	n/a	5:00
Wait time during the Gubernatorial Primary (average)	n/a	0:00	n/a	3:00	n/a
Wait time during the Gubernatorial General election (average)	0:00	0:00	n/a	3:00	n/a
Wait time during the Presidential Primary election (average)	n/a	0:00	n/a	n/a	0:00

