



Angela D. Alsobrooks
County Executive



Michael D. Johnson, P.E.
Director

Belcrest Road Safety Improvement Project

Adelphi Road to Queens Chapel Rd. (MD 500)

Proud to Pave the Way
Multi-Modal Projects on the High Injury Network
Sub-project #5 of 7

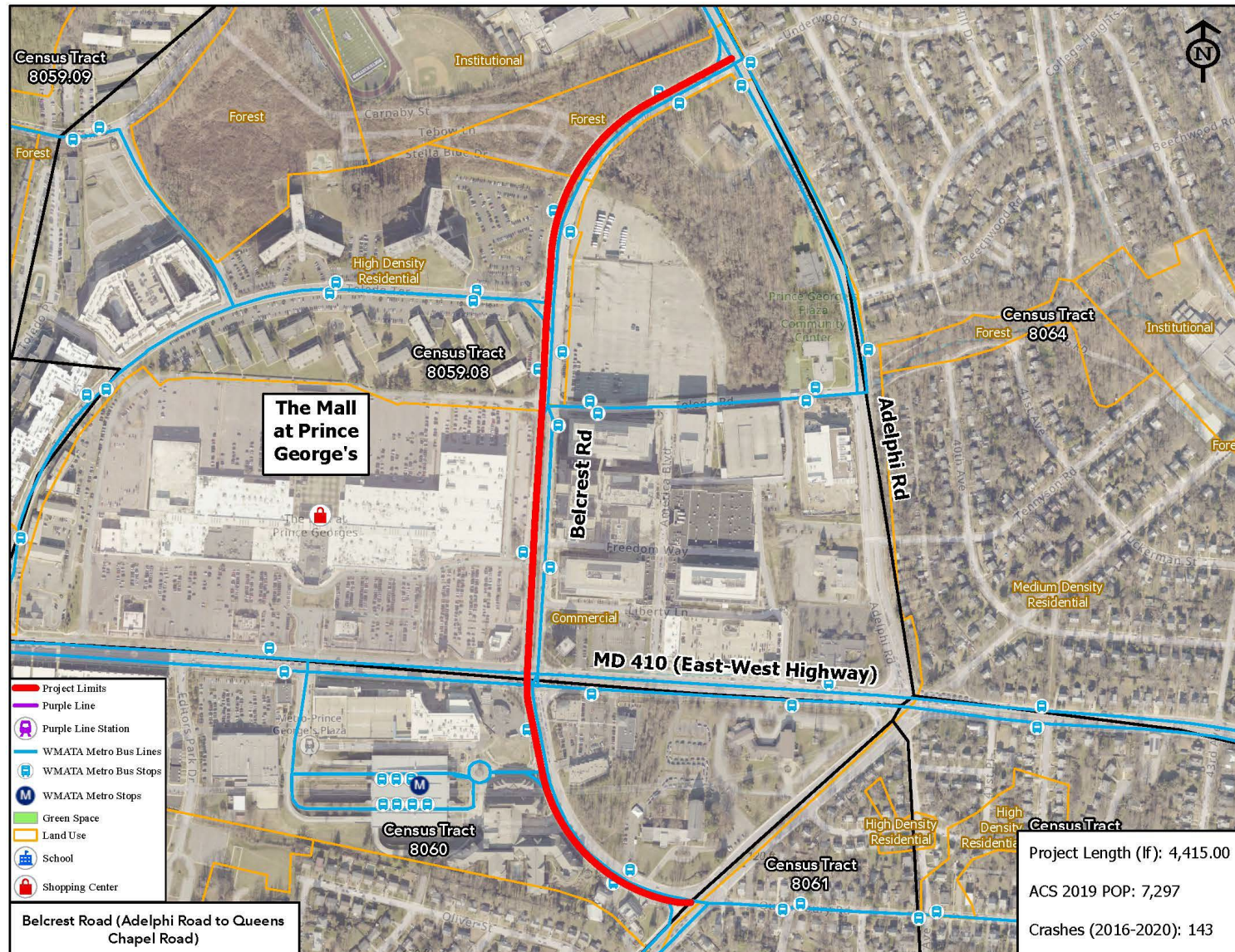


Angela D. Alsobrooks
County Executive

PROJECT LIMITS



Michael D. Johnson, P.E.
Director

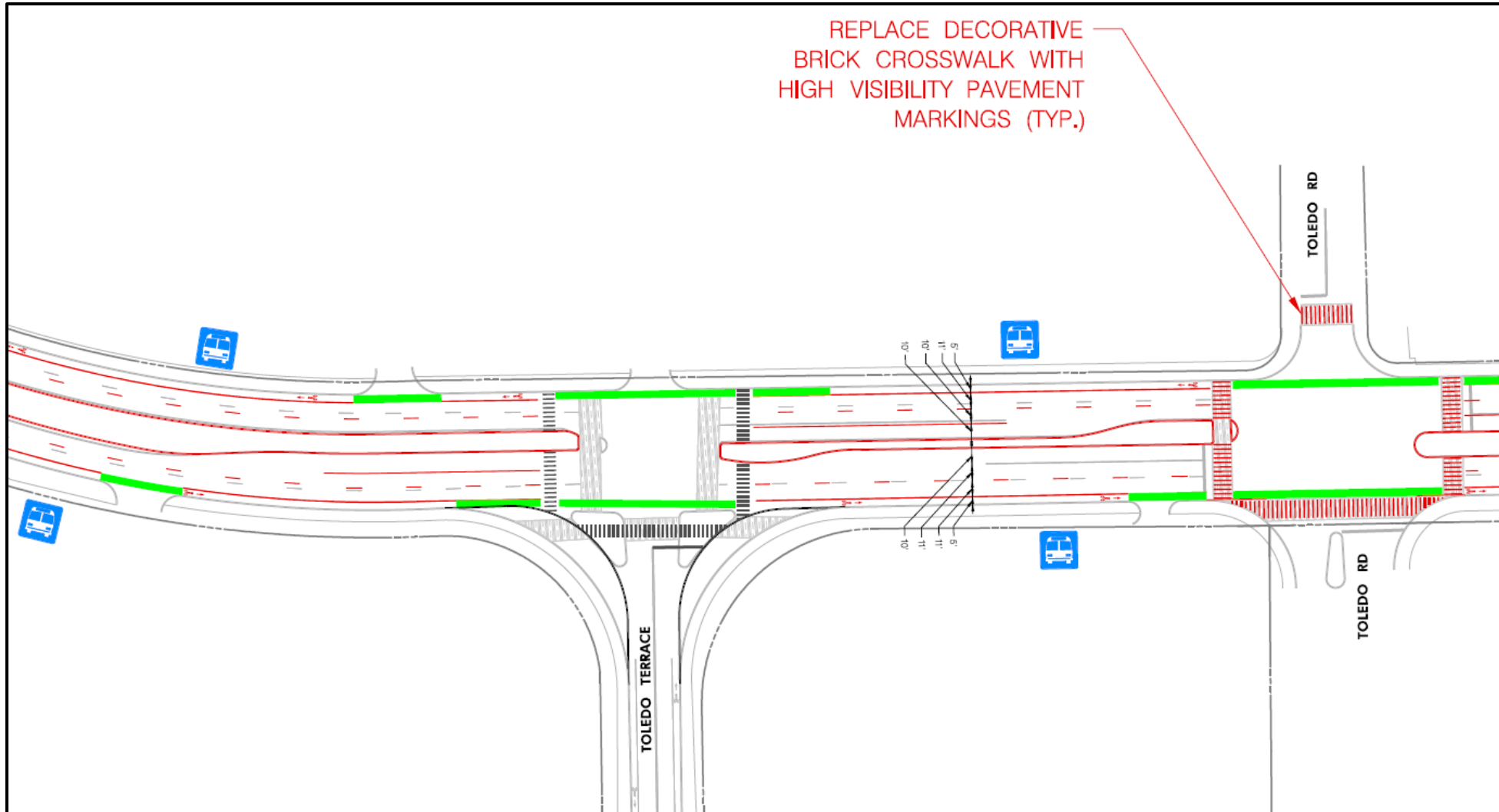




SAMPLE PLANS



BIKE LANES AND INTERSECTION IMPROVEMENTS





Angela D. Alsobrooks
County Executive

CONTACT INFORMATION



Michael D. Johnson, P.E.
Director

POINTS OF CONTACT DURING DESIGN:

Erv Beckert, P.E.

Chief, Highway and Bridge Design Division

Mobile: 240.508.9610

Email: ETBeckert@co.pg.md.us

Stephanie Walder

Design Project Manager

Mobile: 240-204-0353

Email: SAWalder@co.pg.md.us

POINT OF CONTACT DURING CONSTRUCTION:

Dwight Joseph

Chief, Construction Division

Direct: 301. 883. 5633

Email: djoseph@co.pg.md.us



Angela D. Alsobrooks
County Executive



Michael D. Johnson, P.E.
Director

Stay connected with us!



Prince George's County
Department of Public Works & Transportation

Follow us @PGCountyDPWT to stay up to date!

