

Section 3

Overview of the Prince George's County & City of Laurel Hazard Mitigation Plan (HMP)

Emily Clifton, LID Center
Tyrone Wells, OEM





MENTIMETER-Use your cell phone

Navigate to
www.menti.com
and enter code
7558 5689 or use
the QR Code





COURSE DISCLAIMER

This content is subject to change in response to guidance provided at the county, state, and/or federal levels. Updates will be posted after changes are finalized. Please consult OEM and MDEM for the most current information.



Overview of the Prince George's County & City of Laurel Hazard Mitigation Plan (HMP)

- **What This Section Covers:**
 - What is the HMP
 - Why it matters for municipalities
 - How participation works
 - What municipalities are expected to do
 - How participation ties directly to grant eligibility





The County Hazard Mitigation Plan: What you're Actually Working With



Its purpose:

- Identifies risks, vulnerabilities, and mitigation actions
- Ensures long-term strategy for reducing hazard impacts
- Is required for eligibility for FEMA mitigation funding

Why it matters locally:

- Keeps municipalities eligible for FEMA funding
- Provides shared data and analysis you can reuse
- Acts as a source document for grants, budgets, and council discussions



HMP Timeline, Expiration & Adoption

Planned Timeline

Phase 0: Pre-work (Now-mid-2026)

- Data cleanup, participation commitments, schedule setup.

Phase 1: Kickoff (mid/late 2026)

- Planning team established; outreach begins.

Phase 2: Draft Development (2027)

- Risk updates, mitigation actions, capability assessment.

Phase 3: State Review (late 2027/early 2028)

- Initial review & revisions with MDEM.

Phase 4: FEMA Review + Adoption (early/mid 2028)

- Approvable pending adoption → local adoptions.

Phase 5: Final Approval (before Sept 2028)

- Valid for five years.



Municipal Participation Options

Municipalities may:

- Participate in the County-led HMP update (*recommended*)
- Develop their own standalone HMP (*more resource-intensive*)
- Share info informally (*does not confer eligibility*)

Open to all 27 municipalities.



Why Participate in the County-Led Hazard Mitigation Plan

- Reduces duplicative planning and workload
- Provides access to County GIS, hazard data, templates, and subject matter experts

Strategic Benefits



- Provides eligibility for FEMA mitigation programs
- Allows municipalities to submit projects independently

Funding Benefits



- County oversees plan development
- Municipality contributes staff time, local data, & local involvement

Cost Benefits





MENTIMETER-Use your cell phone

Navigate to
www.menti.com
and enter code
7558 5689 or use
the QR Code



Example Outputs Municipalities Can Leverage

Table 3. City of Laurel 2023-2028 Mitigation Actions

Action Number	Action	Goal 1	Goal 2	Goal 3	Goal 4	Action Lead	Timeframe	Priority
Prevention								
L-1	Partner with federal agencies, the state, and non-governmental organizations to utilize available technical assistance to translate identified risks into mitigation projects, especially for benefit-cost analyses.		X		X	Office of Emergency Management	Ongoing	Medium
L-2	Integrate mitigation plan requirements and actions into other appropriate planning mechanisms, such as comprehensive plans and capital improvement plans.				X	Office of Emergency Management	Ongoing	High
L-3	Adopt the most recent published edition of the I-Codes (e.g., International Building Code, International Residential Code).				X	Department of the Fire Marshal and Permit Services	Short-term	High

Prince George's County & City of Laurel **Hazard Mitigation Plan 2023**

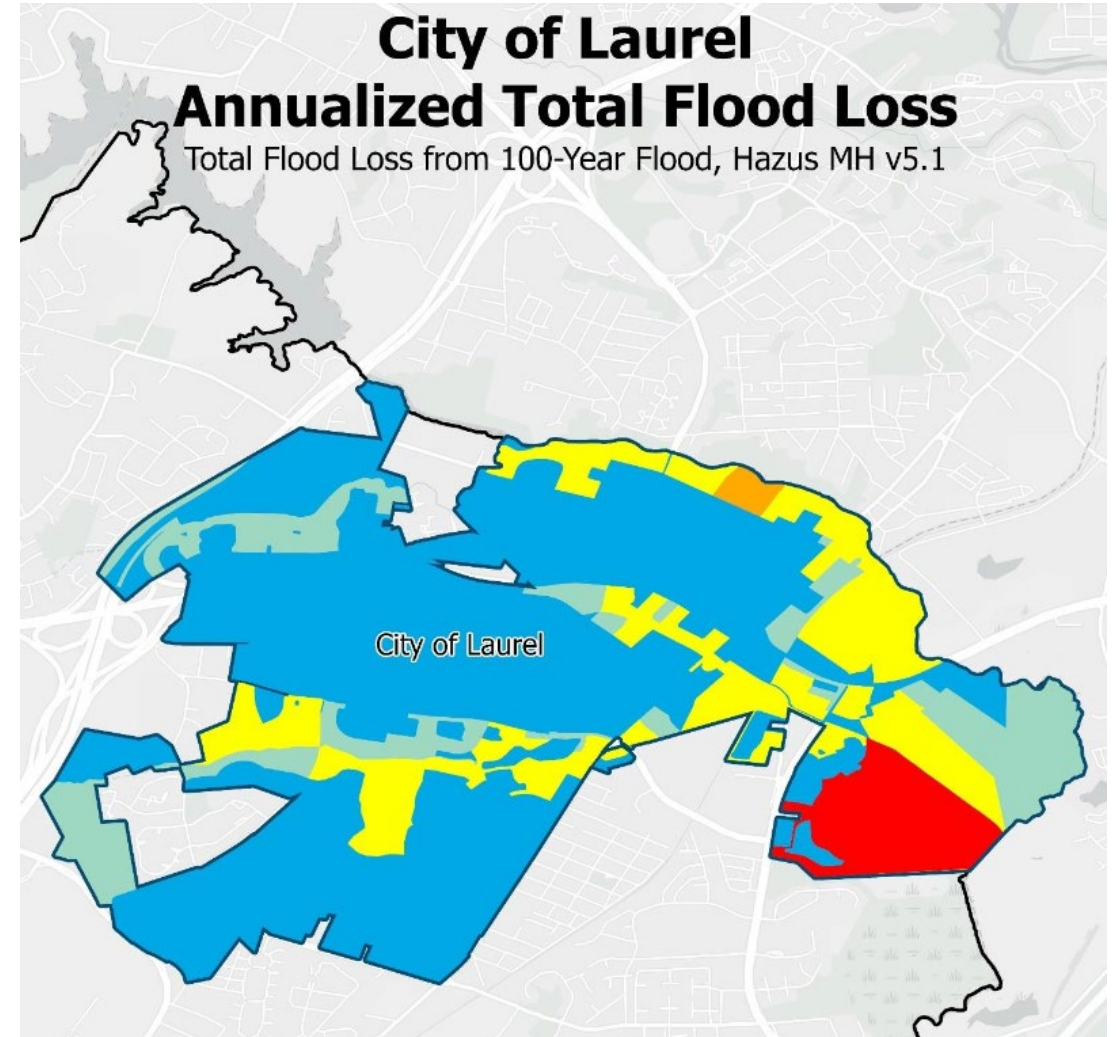
B. City of Laurel Capability Assessment

The City of Laurel uses Maryland city management programs, policies and procedures outlined in a series of City Council Ordinances.

B.1. City Government Overview

The City of Laurel, Maryland is governed by a Mayor and City Council form of government in accordance with its Charter, adopted on April 4, 1870. The elected officials consist of the Mayor, serving a four-year term, and five Council members who serve two-year terms. The Mayor and City Council provide community leadership, develop policies to guide the City in delivering services and achieving community goals, and encourage citizen awareness and involvement:

- **Office of the Mayor:** The Mayor is the Chief Executive of the City with all the powers necessary





Required Municipal Participation (What is Mandatory)

To be a participating jurisdiction, municipalities must:

Attend required meetings (or follow up if absent)

Provide local data (hazards, facilities, actions)

Review and comment on drafts

Adopt the final plan locally



Municipal Role by Planning Phase

Key Requirements

Pre-work & kickoff

- Identify a primary POC + backup
- Confirm internal departments involved

Risk & capability updates

- Provide info on local hazard sites and issues
- Verify critical facilities and known vulnerabilities

Mitigation actions

- Submit 1-3 candidate actions or projects
- Identify constraints and next steps

Draft review & adoption

- Review and comment on municipal sections
- Secure council adoption and transmit documentation



Planning Process Checklists

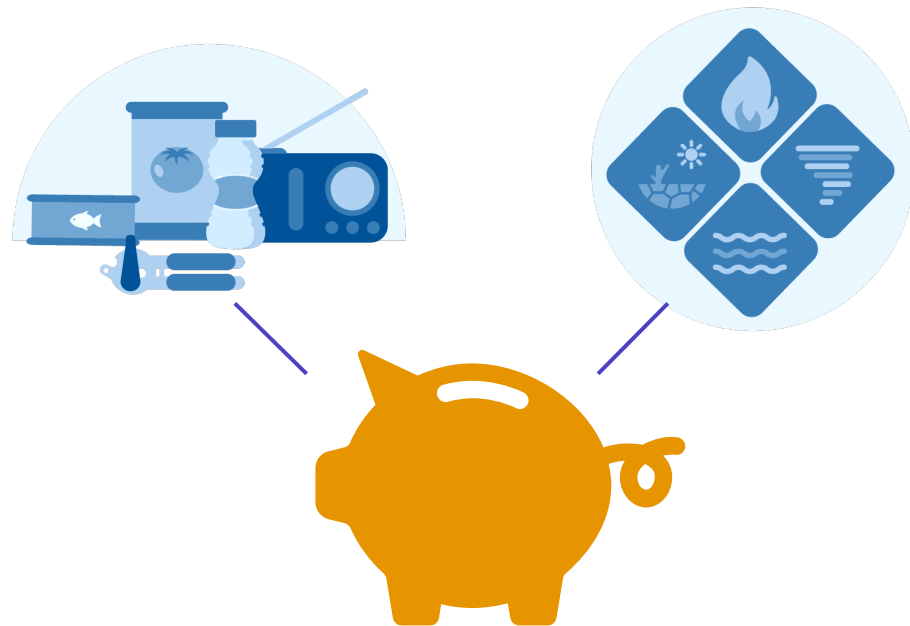
MDEM developing participation criteria.

Will outline minimum requirements for:

- ✓ Attendance
- ✓ Data provision
- ✓ Action identification
- ✓ Review and approvals

More details to come once state guidance is finalized.

Participation = Grant Eligibility



To apply for FEMA mitigation funding, municipalities must:

- Participate in the HMP update **or** have their own approved plan
- Adopt the finalized plan
- Ensure projects align with documented risks and actions

Why this matters:

- FEMA will not fund projects from non-participating jurisdictions
- Higher-scoring applications are explicitly tied to HMP risk assessments & actions