

[View as a webpage](#)

DEPARTMENT OF PERMITTING, INSPECTIONS AND ENFORCEMENT

BUILDING BLOCKS

BUSINESS DEVELOPMENT SECTION NEWSLETTER

Permit us to help you build
your business

July 2020

In this issue:

[Business Spotlight](#)

[The Inside Scoop](#)

[Business Development Section: Helpful Hints](#)

[What's Happening?](#)

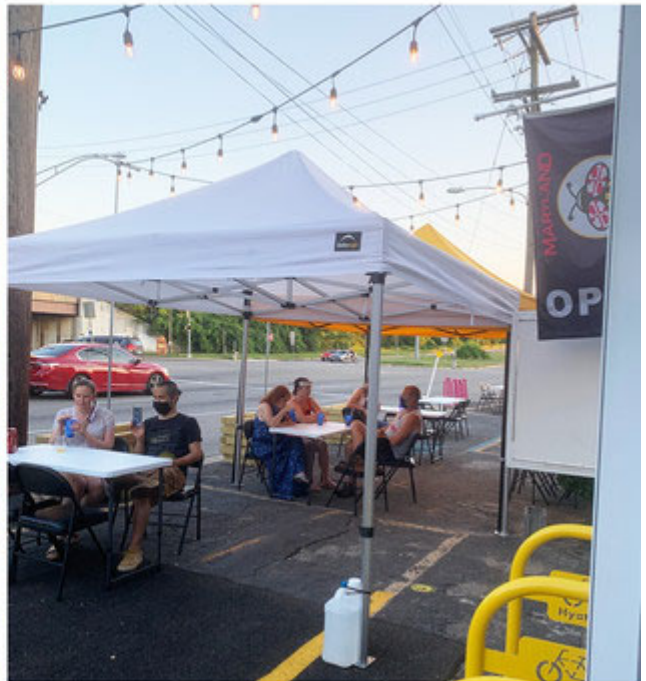
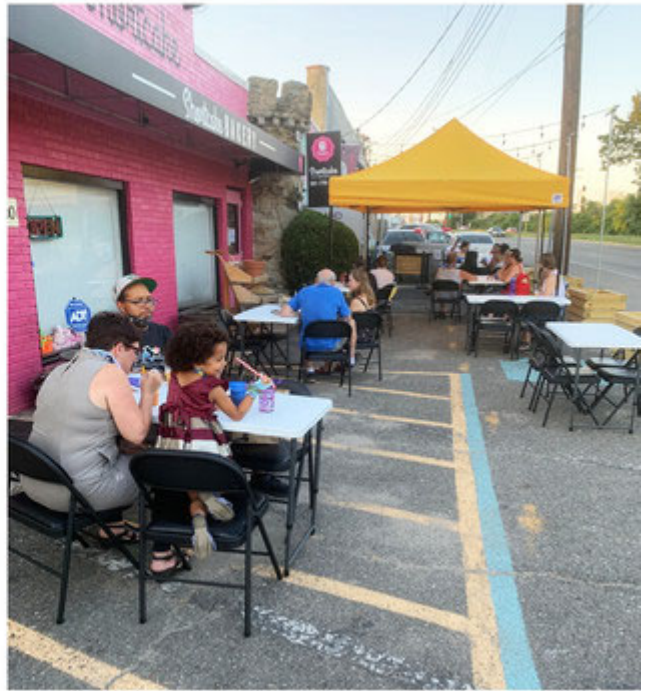
[Community Feedback](#)

[2020 Census](#)

Business Spotlight

BUSINESS SPOTLIGHT

Shortcake Bakery and Maryland Meadworks



Shortcake Bakery and Maryland Meadworks, two Hyattsville businesses, now offer outdoor seating.

DPIE's Restaurant Temporary Outdoor Seating Area (RTOSA) Permit is a County initiative designed to assist restaurants and bars in reopening during the COVID-19 emergency. The Business Development Section (BDS) recently assisted two Hyattsville businesses located side by side on Rhode Island Avenue, along the Route 1 Corridor. Shortcake Bakery and Maryland Meadworks now offer outdoor seating. To ensure customers can continue to enjoy

the varied restaurants and bars throughout the County, BDS is available to assist restaurateurs and bar owners in applying for a RTOSA Permit.

Lidl Food Market



Lidl Food Market has opened two new stores in Prince George's County.

The BDS team recently assisted Lidl Food Market in expanding further into Prince George's County by opening two new stores, one on New Hampshire Avenue in Takoma Park and another on Livingston Road in Oxon Hill. With the addition of the two new stores, the company will now have a total of six stores in Prince George's County. The Lidl stores have replaced several former Shopper's Food Warehouse locations.

The Inside Scoop



Farmers' Markets are operating under COVID guidelines.



Farmers' Markets Are Open and Thriving!

Prince Georgians continue to enjoy locally-grown fresh food from farmers' markets during the current COVID-19 emergency under DPIE's [new vendor COVID guidelines](#) established in response to social distancing mandates. To operate a farmers' market, apply at the [online application portal](#) by selecting the **Building Permit** application. Once your application has been approved, payment can be submitted via the [DPIE ePayments link](#). Once the permits have been issued, farmers' market applicants must obtain a [third party inspection](#).

Business Development Section: Helpful Hints

Business Development Section

Helpful Hints



SUBMITTING DRAWINGS FOR A RESTAURANT TEMPORARY OUTDOOR SEATING AREA (RTOSA) PERMIT

Applicants must submit a Use & Occupancy (U&O) Permit application along with a permission letter from the landlord. Once these initial documents have been verified and accepted, applicants will be invited to submit a clear and concise drawing indicating the seating chart of the outdoor area — including chairs, tables, open tents, and barriers. The drawing can be submitted by the owner applicant. To view a sample seating chart, visit DPIE's [Temporary Restaurant Outdoor Seating](#) web page.

MAKING PAYMENTS IN ePERMITS AND RECEIVING YOUR JOB CARD FOR A U&O INSPECTION

Receiving a U&O requires a two-step process. Often, applicants forget the second part of that process. Step 1 requires the applicant to pay the outstanding application fee via [DPIE's ePayments link](#). After payment has been made, the applicant must complete Step 2 by reopening their ePlan account to complete the "Applicant Final Fee Payment" task. Once Step 2 has been completed, DPIE will issue a job card for the project. If the payment task is not completed correctly in ePlan, the job card will not be issued. For detailed instructions, see DPIE's [ePlan Applicant User Guide](#).

OPERATING A FOOD TRUCK

If you are an entrepreneur interested in operating a food truck in Prince George's County, you must apply for a Mobile Food Service Facility Permit which is issued by the Health Department. However, for those who want to operate at food truck hubs, a Special Food Service Facility Mobile Unit License is also required and issued by DPIE. For more information, visit DPIE's [Food Truck Hubs](#) web page.

PARKING COMMERCIAL VEHICLES IN RESIDENTIAL ZONES

BDS Upcoming Events

Join us for a free webinar about the **Peer Review Program (PRP)**. This presentation will discuss Building Plan Review Division (BPRD) projects. The PRP is an optional program offered to allow permit applicants to hire approved peer reviewers to review their plans in lieu of having the plans evaluated by DPIE personnel. The program reduces the review time associated with construction plan approval.

The webinar will provide information for applicants about the program and those interested in becoming peer reviewers. Click to [Register for the Peer Review Program Webinar](#).



DEPARTMENT OF PERMITTING, INSPECTIONS AND ENFORCEMENT
BUILDING BLOCKS
BUSINESS DEVELOPMENT SECTION NEWSLETTER
Permit us to help you build your business

DPIE
Business Development Section
Webinar

Join us for a free webinar about the Building Plan Review portion of the **Peer Review Program (PRP)**. The PRP is an optional program offered to allow permit applicants to hire approved peer reviewers to review their plans in lieu of having the plans evaluated by DPIE personnel. The program reduces the review time associated with construction plan approval. The webinar will provide information for applicants and those interested in becoming peer reviewers.

2 pm to 3 pm, Thursday, July 30, 2020

To attend the webinar, register here
For more information, email us at DPIEBIZDEV@co.pg.md.us

 Angela D. Alsobrooks
County Executive

 Proud

 **DPIE**
Department of Permitting, Inspections and Enforcement
Melinda Bolling
Director



DEPARTMENT OF PERMITTING, INSPECTIONS AND ENFORCEMENT
BUILDING BLOCKS
BUSINESS DEVELOPMENT SECTION NEWSLETTER
Permit us to help you build your business

Tenant Fit-Outs Presentation

DPIE's Business Development Section discusses the requirements for tenant fit-outs. A fit-out is a project involving interior construction within an existing building to accommodate a new tenant.



 Angela D. Alsobrooks
County Executive

 Proud

 **DPIE**
Department of Permitting, Inspections and Enforcement
Melinda Bolling
Director

ICYMI

On June 30th, the BDS hosted a webinar to discuss the requirements for tenant fit-outs. A fit-out is a project involving interior construction within an existing building to accommodate a new tenant.

The presentation is available for public viewing at [Tenant Fit-Outs](#).

Business News

Click on the graphics below to register for trainings or assistance.



ECONOMIC DEVELOPMENT CORPORATION (EDC)

The EDC provides consultations to businesses on an array of subjects from buying or renting commercial space to obtaining financing to writing a business plan. The EDC also offers a number of informative videos, including "Buy Prince George's," which urges investment in the County. The EDC continues to host webinars during the COVID-19 emergency. For more information, visit <https://www.pgcedc.com/>.

DPIE ePLAN TRAINING VIA ZOOM

DPIE's free ePlan Training is now offered virtually. Customers will be trained on completing online applications and uploading plans for review. The sessions are held monthly from 10 a.m. until 12 noon on the third Thursday via Zoom. Online enrollment is limited. To attend, register by the second Thursday of the month at <http://dpiemypgc.us>.



PRINCE GEORGE'S CHAMBER OF COMMERCE (PGCOC) MEETINGS

PGCOC will host a conversation on business tax implications as they pertain to COVID-19 grants and loans on July 28. PGCOC continues to hold monthly committee meetings. For more information, visit <http://business.pgcoc.org/events/calendar/>.

MARYLAND SMALL BUSINESS DEVELOPMENT CENTER

The center is hosting several webinars throughout July and August. For more information, visit www.mdsbdc.umd.edu/training/events-calendar.



Community Feedback

Community Feedback



Thank you again for helping shepherd this through!
I passed the inspection yesterday, and DPIE
sent me the official permit today for display. ”

KEN CARTER
MARYLAND MEADWORKS



Permit us to help you build your business!

For more information on the permitting and licensing processes,
please contact DPIEBIZDEV@co.pg.md.us.

2020 Census

WHAT IS THE U.S. CENSUS?

By law, every 10 years the U.S. Census counts every resident in the United States. Your participation determines representation and how billions in federal funds are distributed. If our community is undercounted, friends and neighbors miss out on an estimated **\$18,250 per person over a 10-year period**. Statewide, that's a total of **\$26.6 billion over a 10-year period**.

<https://www.princegeorgescountymd.gov/3233/2020-Census>



Prince George's County
Department of Permitting, Inspections and Enforcement
9400 Peppercorn Place
Largo, MD 20774

Phone: (301) 636-2000

<http://dpie.mypgc.us>



Subscriber Services: [Manage](#) | [Unsubscribe](#) | [Help](#)

Subscriber or Web Questions? [Contact County Click 3-1-1](#)



Having trouble viewing this email? [View it as a Web page.](#)

This email was sent using GovDelivery Communications Cloud on behalf of: Prince George's County Maryland · 14741 Governor Oden Bowie Drive · Upper Marlboro, MD 20772-3050 · 3-1-1 (inside County) or 301-883-4748 (outside County)

