

PRINCE GEORGE'S COUNTY RAIN CHECK REBATE PROGRAM WEBINAR

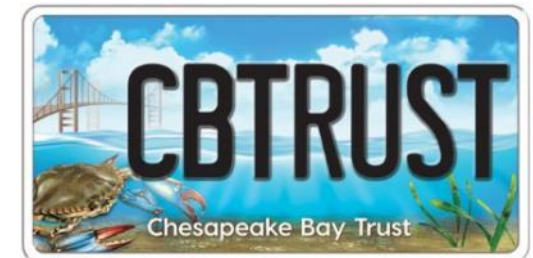
April 14, 2022
6PM – 7PM

Rain Check Rebate Program:

<https://cbtrust.org/prince-georges-county-rain-check-rebate/>

The webinar will begin momentarily.

This webinar will be recorded and shared with those who were unable to attend.



LOGISTICS AND ZOOM MEETING CONTROLS

Mute / Unmute
Mute and unmute your microphone and change your audio connection.

Participants
See who's currently in the meeting.



Start Video / Stop Video
Turn your camera on or off.

Chat
Access the chat window to ask a question or make a comment.

Reactions
React to the meeting using emojis and raise your hand





DEPARTMENT OF THE ENVIRONMENT

CALENDAR of EVENTS

April is Earth Month!

Join the Prince George's County Department of the Environment in Earth Day 2022 celebrations! More information can be found here:

<https://www.princegeorgescountymd.gov/3488/Earth-Day>

4/2 DoE Pet Orientation
(10am)

4/2 Farmer for a Day
(9am)

www.pgarks.com/calendar

4/3 Fundamental of Foraging
(10am)

www.pgarks.com/calendar

4/4 - 4/9 NATIONAL WILDLIFE WEEK

4/5 PGCLitter TRAK
app Training (6pm)

bit.ly/PGCLitterTRAK

4/6 Green Business
Spotlight

environment.mypgc.us

4/6 Community Partners'
Meeting (9am)

bit.ly/CommunityPartnersSpring2022

4/8 DoE Scavenger
Hunt

environment.mypgc.us

4/9 Potomac River
Cleanup (9am-12pm)

www.fergusonfoundation.org/events

4/9 EcoLatinos Adelphi
Mill Cleanup

www.ecolatinos.org

4/9 Patuxent River Park
Open House
(11am - 2pm)

www.pgarks.com/calendar

4/10 Anacostia River
Festival
(1pm - 4pm)

www.bbardc.org/events

4/11 National
Pet Day

4/12 PGCLitter TRAK
app Training (6pm)

bit.ly/PGCLitterTRAK

4/13 Green Business
Spotlight

environment.mypgc.us

4/13 Time to Start
Your Garden
(7-8pm)

www.pgcmis.info/events

4/14 Container Gardening
(3:30-4:30pm)

www.pgcmis.info/events

4/14 Rain Check Rebate
Webinar
(6pm)

bit.ly/RCRwebinar414

4/15 DoE Scavenger
Hunt

environment.mypgc.us

4/15 Nature Crafts
(10-11am and 1-2pm)

www.pgarks.com/calendar

4/17 Bat
Appreciation
Day

4/18 - 4/23 PGC PRESERVE AND BEAUTIFY OUR ENVIRONMENT WEEK

4/18 Film Discussion:
Intelligent Trees
(7pm - 8pm)

www.pgcmis.info/events

4/19 PGCLitter TRAK
app Training (6pm)

bit.ly/PGCLitterTRAK

4/20 Green Business
Spotlight

environment.mypgc.us

4/20 STEM for Families
(4:40 - 6pm and 6:30-7:30pm)

www.pgcmis.info/events

4/21 Plant Swap
(4:30pm - 6pm)

www.pgcmis.info/events

**4/22
EARTH DAY**

4/22 DoE Scavenger
Hunt

environment.mypgc.us

4/23 Mulch Madness
(8am - 1pm or while
supplies last)

mypgc.us/mulchmadness

4/23 Growing Green
with Pride
(8am-12pm)

mypgc.us/growinggreen

4/23 Tree Workshop and
Giveaway
(10am - 1pm & 1 - 3 pm)

Must register to receive trees
www.facebook.com/pgcforestyboard

4/23 Anacostia Watershed
Society's Earth Day
Cleanup (10am 12pm)

www.anacostiaws.org/earthday2022

4/27 Green Business
Spotlight

environment.mypgc.us

4/28 Earth Month Keyote:
Ben Raines on "Saving
America's Amazon"
(7-8pm)

www.pgcmis.info/events

4/29 Arbor
Day

4/29 DoE Scavenger
Hunt

environment.mypgc.us

4/30 Adopt a
Shelter
Pet Day

4/30 Free Community
Shredding in Cheverly
(9am - 1pm)

www.ecoshredllc.com/shred-events

4/30 Prescription Drug
Take Back Day
(10am)

www.dea.gov/takebackday

4/30 Montpelier Festival
of Herbs, Tea & the Arts
(10am - 4pm)

www.pgarks.com/calendar

4/30 Christmas in
April

www.christmasinaprilpg.org

4/30 Creating a Sanctuary
in Your Yard with
Native Plants
(7:30 - 8pm)

www.pgcmis.info/events

AGENDA

- Introductions
- Rain Check Rebate Program
- Residential Resilience Rebates
- Success stories from previous applicants
- Q&A
- Closing remarks



INTRODUCTIONS

Attendees, please introduce yourself in the chat:

- Where do you live/what organization are you with?
- What brought you to this webinar?



RAIN CHECK REBATE PROGRAM OVERVIEW



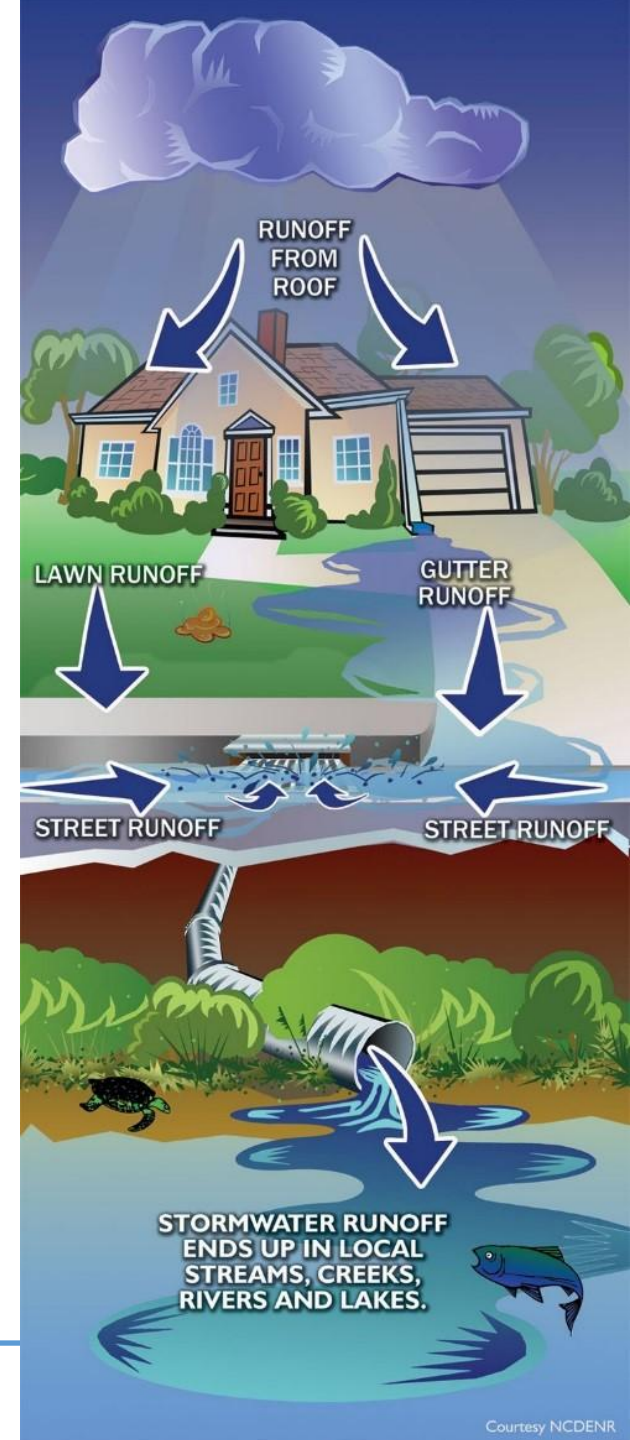
RAIN CHECK REBATE PROGRAM BACKGROUND

- Offers **rebates** to property owners that install approved stormwater management practices on their property. Property owners can also receive a reduction on their Clean Water Act fee.
- Helps reduce stormwater runoff, improve water quality, and improve communities.
- Funding is provided by the Prince George's County Department of the Environment through the Clean Water Act fee (supported by County residents).
- Administered by the Chesapeake Bay Trust.



STORMWATER RUNOFF

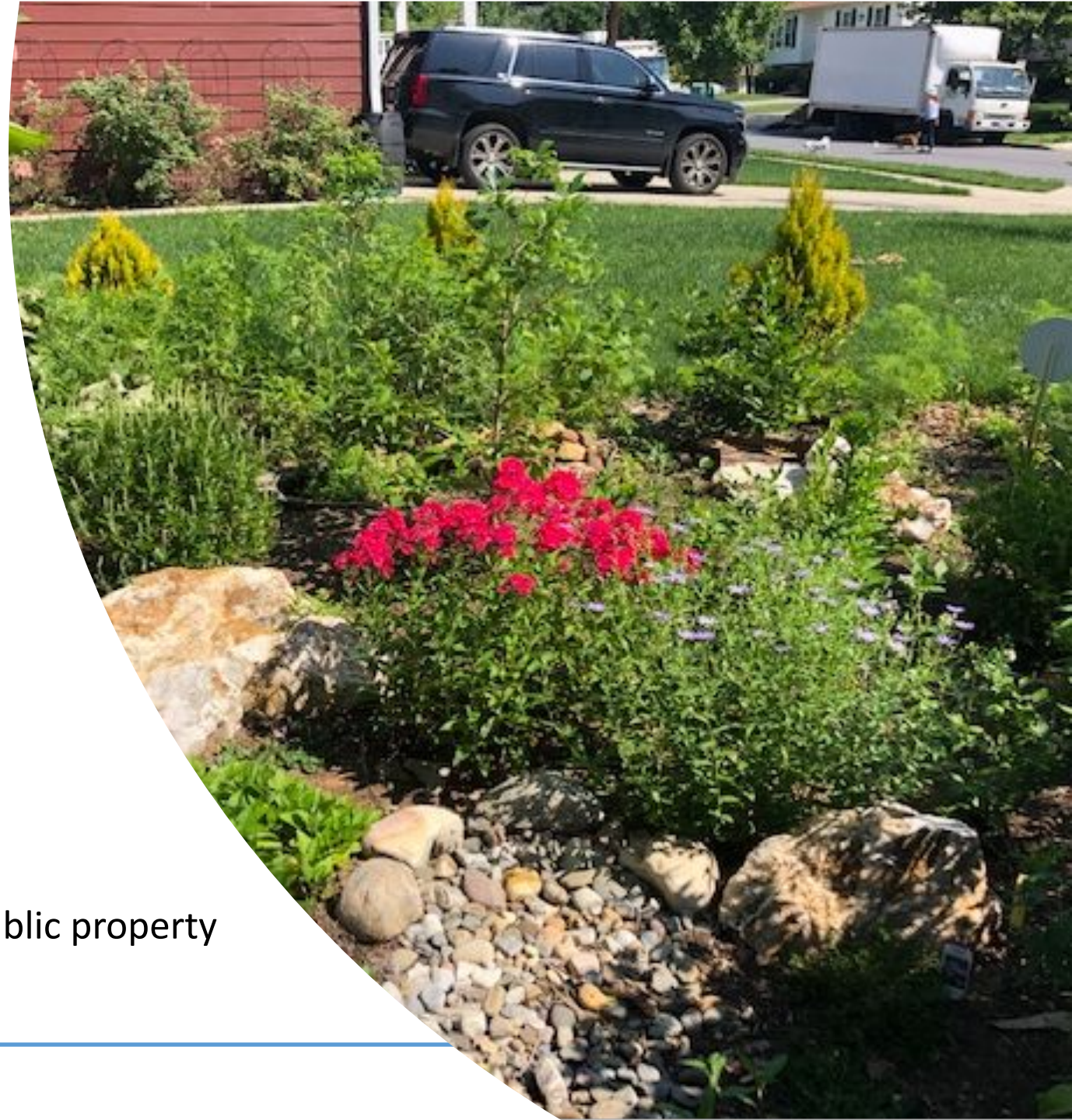
- Rain or melted snow that flows across impervious surfaces (roofs, driveways, roads) that do not allow the water to soak into the ground
- As it flows across these surfaces, it can pick up harmful pollutants such as bacteria from pet waste and motor oil from cars.
- This polluted runoff enters our storm drains and makes its way into nearby rivers. It is harmful to aquatic life and can be a health hazard for people.
- Fast-moving and high volumes of stormwater runoff can also cause erosion of riverbanks.



ELIGIBLE APPLICANTS

The applicant **must** be the property owner or a nonprofit organization with an agreement to complete a project on public property.

- Residential property owners
 - Individual residences
 - Individual members of a housing cooperative
- Commercial, Industrial, and Institutional property owners
 - Multi-family dwellings
 - Homeowner associations
 - Condominium associations
 - Civic associations
 - Nonprofit organizations
 - Businesses
- Nonprofit organizations installing a project on public property





ELIGIBLE PROJECTS

- Is in Prince George's County (excludes City of Bowie; excludes Town of Cheverly, Town of University Park, and City of College Park for tree plantings)
- Is an eligible Rain Check Rebate practice and follows the program guidelines and criteria
- Is completed within 12 months of application submission/pre-approval
- Is not required under an existing permit/regulatory requirement



MAXIMUM REBATE AMOUNTS

- Up to **\$6,000** for residential properties
- Up to **\$20,000** for commercial, industrial, and institutional properties
- Up to **\$20,000** for nonprofit organizations installing a project on public property
- An applicant may complete multiple projects until the total maximum rebate amount is met
- The final rebate amount is dependent upon final project size(s) and costs supported by receipts/invoices.



ELIGIBLE RAIN CHECK REBATE PRACTICES



Rain
Barrel



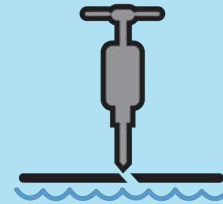
Cistern



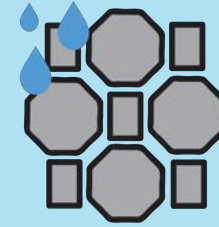
Rain
Garden



Urban Tree
Canopy



Pavement
Removal



Permeable
Pavement



Green
Roof

Additional information can be found at
<https://cbtrust.org/prince-georges-county-rain-check-rebate/>



RAIN BARRELS

- A rain barrel is a container used to collect and temporarily store rainwater that flows from the rooftop.
- Collected water can be reused for non-potable purposes such as watering the lawn.

Rebate Allowance: \$2/gallon stored

Requirements:

- For residential properties: must be at least 50 gallons
- For all other property types: must be at least 100 gallons



CISTERNS

- A cistern is a sealed tank used to collect and temporarily store rainwater that flows from the rooftop.
- Collected water can be reused for non-potable purposes such as watering the lawn.

Rebate Allowance: \$2/gallon stored

Requirements:

- For all property types: must be at least 250 gallons





URBAN TREE CANOPY

- Trees catch falling rain, filter out pollutants, and absorb stormwater runoff.
- Trees also clean polluted air and provide habitat and food to birds and other pollinators.

Rebate Allowance: \$150/tree

Requirements: Must be a native species, at least 5 feet tall when planted, and planted between October and May



RAIN GARDENS

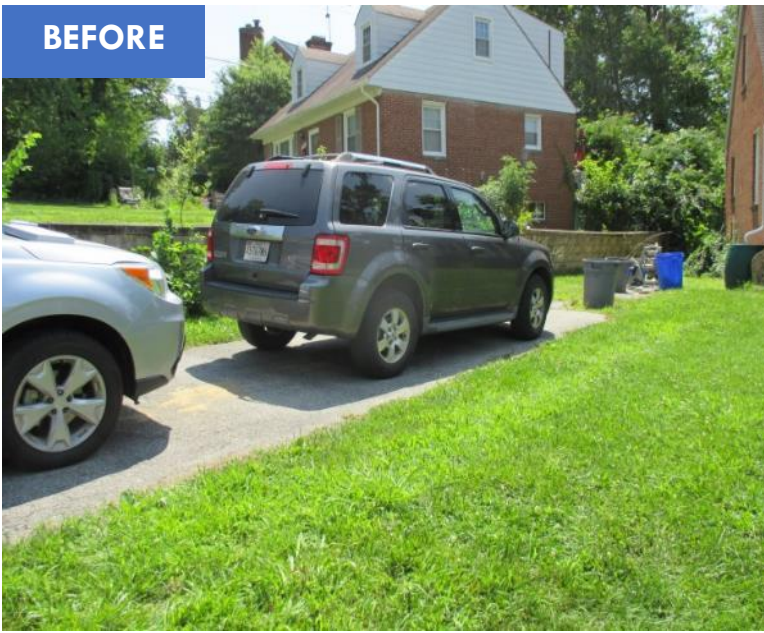
- A rain garden is a planted shallow depression that contains water-tolerant native plants.
- Rain gardens are designed to capture and temporarily store stormwater runoff allowing it to soak and infiltrate into the ground.

Rebate Allowance: \$10/sq. ft. installed

Requirements: Must be at least 100 square feet and contain native plants for all property types



BEFORE



AFTER



PAVEMENT REMOVAL

- Pavement removal is the replacement of impervious surfaces such as conventional asphalt and concrete, with grass, native plants, or permeable pavement.

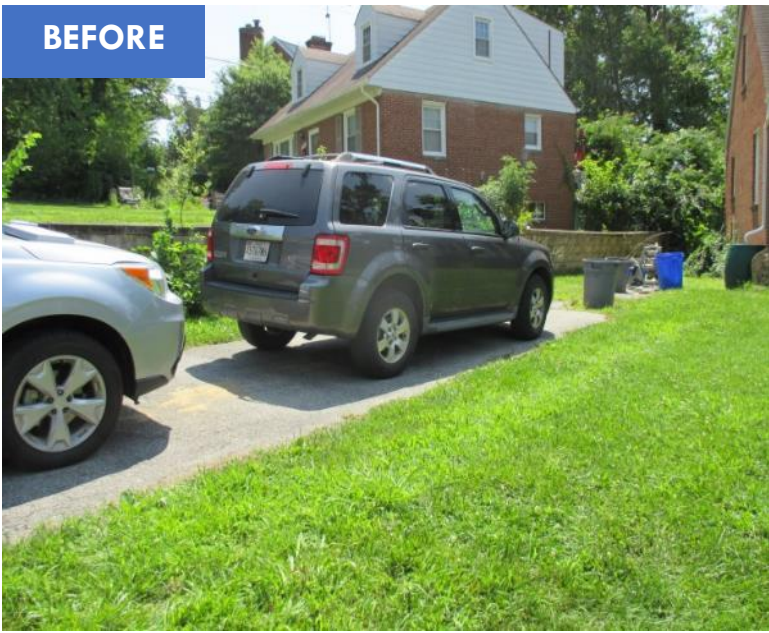
Rebate Allowance: \$6/square foot removed

Requirements:

- For residential properties: no minimum size
- For all other property types: must be at least 400 square feet



BEFORE



PERMEABLE PAVEMENT

- Permeable pavement allows stormwater to soak into the ground compared to impervious surfaces where rainwater accumulates and flows across the surface.

AFTER



Rebate Allowance: \$12/square foot installed

Requirements:

- Must be installed by a qualified contractor
- For residential properties: no minimum size
- For all other property types: must be at least 400 square feet

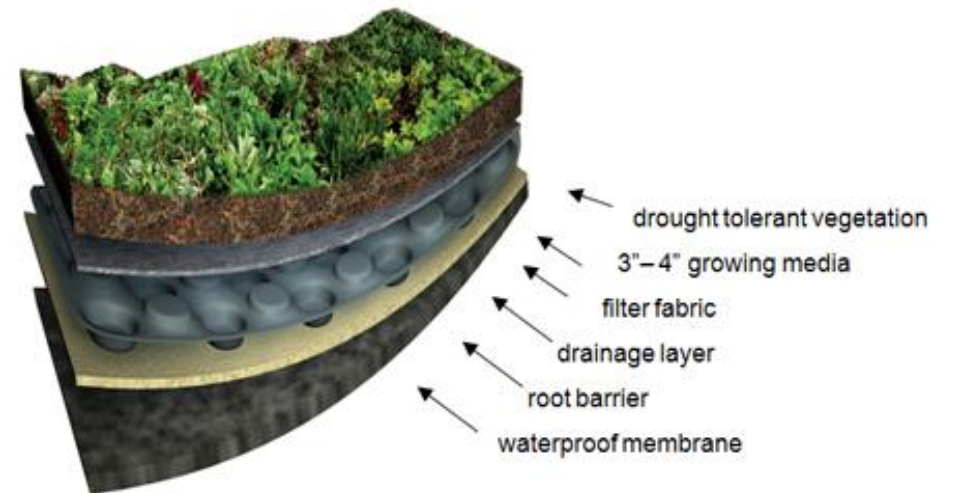


GREEN ROOFS

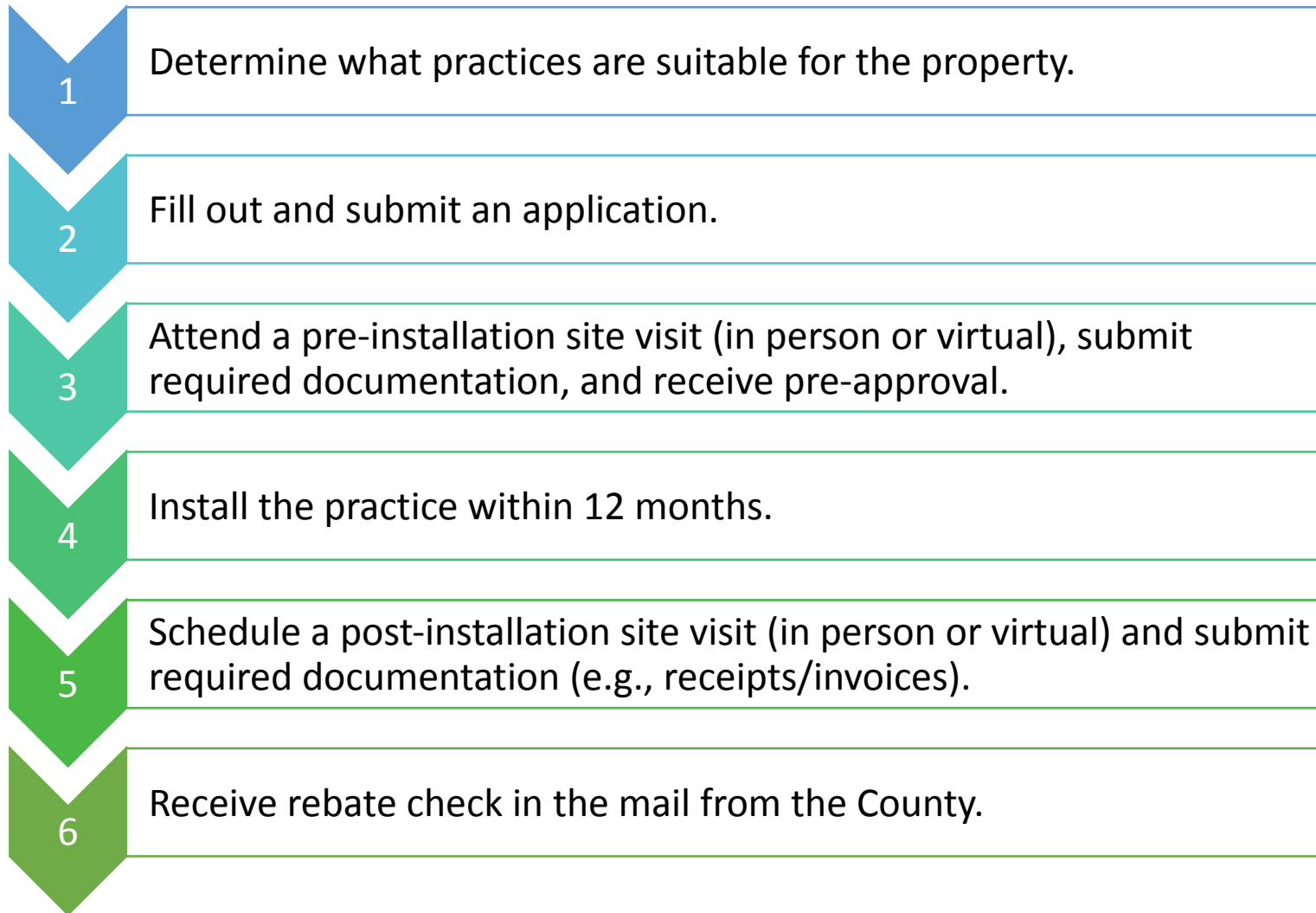
- A green roof is a vegetated roof system that captures and temporarily stores rainwater in a lightweight, engineered soil.
- The stored water is taken up by the plants on the rooftop and released back into the atmosphere through evaporation. As a result, compared to a conventional rooftop of the same area, much less water runs off of a green roof.

Rebate Allowance: \$10/square foot installed

Requirements: Must be at least 1/4 roof retrofit for all property types, have a structural load analysis report from a licensed structural engineer, and be installed by a certified green roof contractor



RAIN CHECK REBATE PROCESS





RESOURCES AND CONTACT INFO

•Rain Check Rebate Website

<https://cbtrust.org/prince-georges-county-rain-check-rebate/>

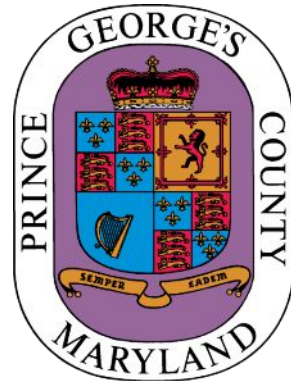
- Photos, fact sheets, guidelines, and maintenance information for the practices
- List of contractors that have completed a County-sponsored training course
- Application instructions and online application
- Frequently Asked Questions

•Rain Check Rebate Coordinator

Kathy Somoza

ksomoza@cbtrust.org

(410) 974-2941 x120





ADDITIONAL RESOURCES

Chesapeake Bay Trust:

- Native Plant Species Selection Guide:
https://cbtrust.org/wp-content/uploads/External_Final-Trust-Draft-Plant-Species-Selection-Guide-Oct2021.pdf
- Stormwater Stewardship Grant Program:
<https://cbtrust.org/grants/prince-georges-stormwater-stewardship-2/>

National Wildlife Federation Resources:

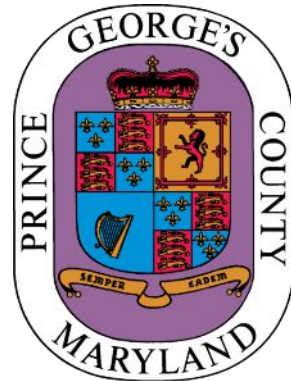
- Native Plant Finder tool:
<https://www.nwf.org/nativeplantfinder>
- Eastern Temperate Forests Native:
<https://www.nwf.org/nativeplantfinder>

Maryland Native Plant Society:

mdflora.org/nurseries.html

Chesapeake Bay Native Plant Center:

<https://www.nativeplantcenter.net/>





NOW HIRING:

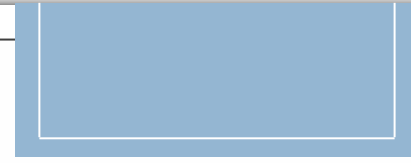
Rain Check Rebate Program Intern

- Undergraduate or graduate degree-seeking student
- **Compensation:** \$16.00 per hour, 24 hours per week.
- **Term:** Approximately June 1 through October 1; with a possibility to extend the term pending resource availability.
- **To apply:** View the full job description and application instructions at: <https://cbtrust.org/employment-opportunities/>

The background of the entire image consists of several large, stylized green leaves. The leaves are layered, with some in the foreground and others behind, creating a sense of depth. They are all a vibrant green color and have a smooth, curved shape. The overall effect is a fresh, natural, and eco-friendly aesthetic.

Prince George's County

DEPARTMENT OF THE ENVIRONMENT



RESIDENTIAL RESILIENCE REBATES

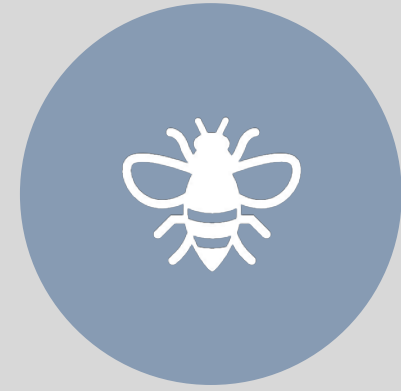
Residential Resilience Rebates



SLIDING SCALE FOR
UNDERSERVED COMMUNITIES



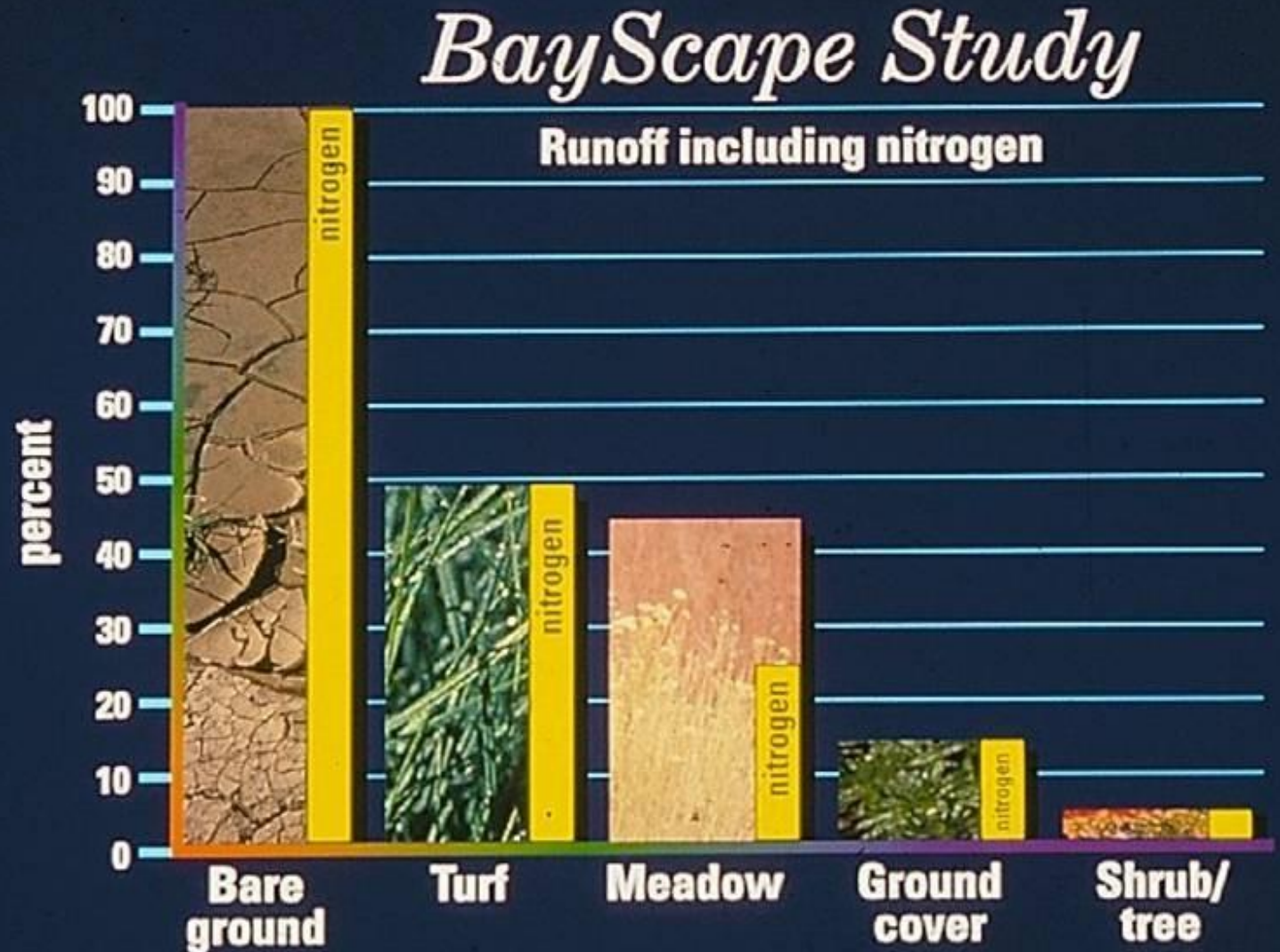
LOW-CARBON CONSERVATION
LANDSCAPES



COOL SURFACES & LOCAL
FOOD RESOURCES

Why is a Conservation Landscape Rebate important?

- Climate Adaptation and Resilience
- Pollution Reduction
- Quality of Life(no mow more=more time)
- Stormwater Management





BRIGHT = HOT

DARK = COOL



Climate Adaptation & Resilience

- Sequesters Carbon
- Cools Surfaces & Surroundings
- Support Pollinators & Healthy Food Systems
- Water Conservation
- Stormwater Management

Pollution Reduction

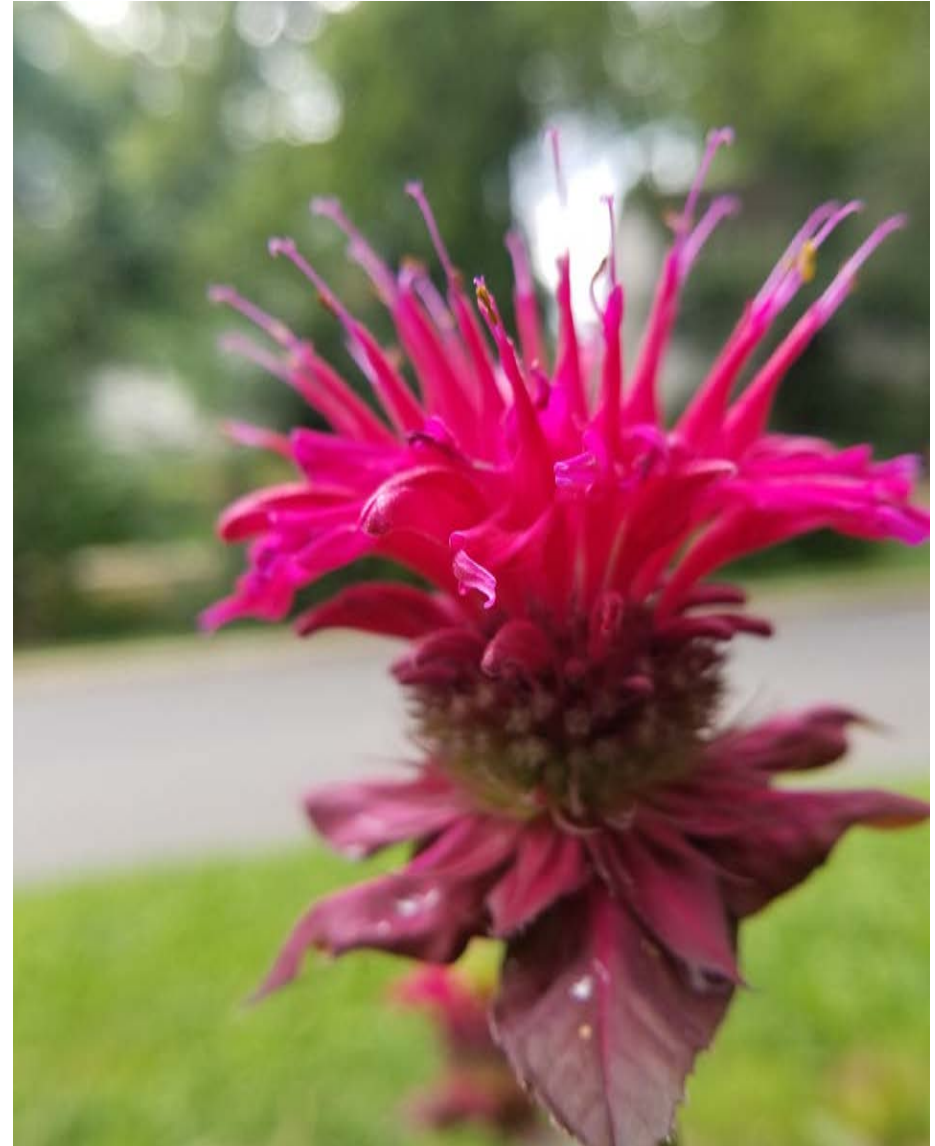
- Air Quality
- Noise Reduction & Attenuation
- Reduce Use of Gasoline, Chemical Fertilizers, & Pesticides
- Reduces Erosion
- Captures & Filters Stormwater

Quality of Life

- Creates Food Webs
- Preserves Native Plant Species
- Supports Local Nurseries & Landscapers
- Increase Appreciation of Local Ecosystems
- Reduces Maintenance
- Cost Savings

What is Conservation Landscaping?

Conservation landscaping means working with nature to create diverse landscapes that: Help protect clean air and water; enhance climate resilience; support pollinators and wildlife; while providing a healthier and more aesthetically pleasing environment.



Bayscapes

- Densely-planted layers
- Native or noninvasive edible plants
- Plants for pollinators & beneficial insects
- Preserves & enhances soil structure



Stormwater Gardens

- A Bayscape that intercepts runoff without ponding
 - Absorbs 14% more runoff than lawn
 - Easier to install and maintain than rain gardens
-



Meadows

- A complex community of native grasses and herbaceous plants
- Absorbs 30% more runoff than lawn & efficiently removes nitrogen
- Excellent at carbon sequestration and building soil



Landscape Restoration

- Preserve native plants / features
- Create connections
- Add missing plant layers
- Successional planting
- Manage succession
- Remove invasives

Practice targets residential properties greater than 3 acres and office parks.



Urban Soil Restoration

Air tilling of compacted soil to incorporate compost for healthier soil

Once tilled, planting options are:

- A. Mini Forest
- B. Bayscape
- C. Stormwater Garden or Rain Garden
- D. Meadow
- E. Vegetables (winter cover crop required)
- F. Lawn





Carole Ann Barth

240-532-1299

cabarth@co.pg.md.us

PROJECT EXAMPLE



Hyattsville



One 50-gallon rain
barrel installed



Rebate amount: \$100

STORMWATERDIVISION



PROJECT EXAMPLE



Upper Marlboro



320 square feet of pavement removed



320 square feet of permeable pavement installed



Rebate amount: \$4,000



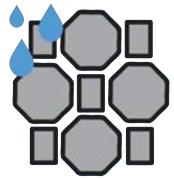
PROJECT EXAMPLE



Mount Rainier



166 square feet of
pavement removed



255 square feet of permeable
pavement installed



Rebate amount: \$4,536



PROJECT EXAMPLE



Riverdale Park



One 50 gallon rain barrel installed



One 500 gallon cistern installed



Rebate amount: \$1,100

STORMWATER DIVISION



PROJECT EXAMPLE



Mount Rainier



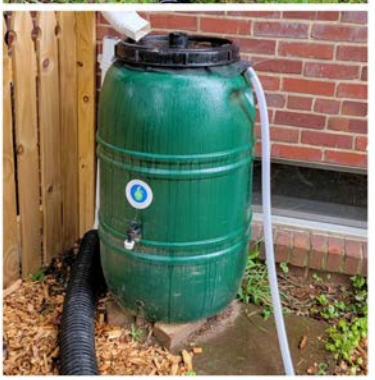
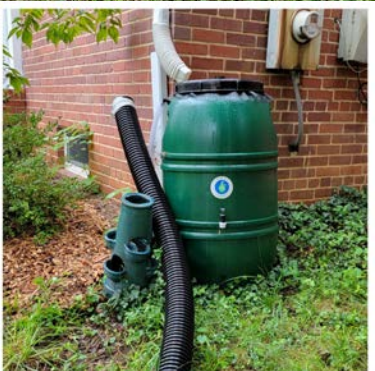
124 square foot rain garden installed



Four 60-gallon rain barrels installed



Rebate amount: \$1310.52



PROJECT EXAMPLE



Brentwood



22 native trees planted



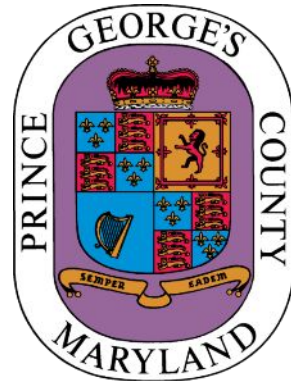
Rebate amount:
\$3,053.33





Raise your hand
or
Use the chat box





THANK YOU!