










HAPGC - Renovation Product Listing and Specifications

-  Binder1
-  DIVISION 06 -WingIts
-  DIVISION 08- Slidng Door
-  DIVISION 09 - Ceramic – Floor bath room
-  DIVISION 09 - Ceramic – Wall tile Accent
-  DIVISION 09 - Ceramic WALL
-  DIVISION 09 - Flooring Vinyl Tile -PLANK - SHAW
-  DIVISION 09 - Flooring Vinyl Tile -PLANK
-  DIVISION 09 - Marble threshold
-  DIVISION 09 - Paint _Walls
-  DIVISION 09 - Vinyl Composite Tile
-  DIVISION 10 - Mirror Tilt
-  DIVISION 10 - Tilted mirror SS.Frame
-  DIVISION 11 - Garbage Disposal
-  DIVISION 11 -Refrigerator
-  DIVISION 11 -Stove 2 BLACK
-  DIVISION 11 -Stove
-  DIVISION 15 - BATH Faucet 1
-  DIVISION 15 - Elongated Toilet Bowl ADA
-  DIVISION 15 - Kitchen Faucet
-  DIVISION 15 - shower valve
-  DIVISION 15 - Toilet tank
-  DIVISION 15 - TubShower Trim
-  DIVISION 15 - Under Sink Protector ADA
-  DIVISION 15 -Bath tub
-  DIVISION 15 -Decorator Receptacle
-  DIVISION 15 -Elongated Toilet Seat ADA
-  DIVISION 15 -Hand Shower
-  DIVISION 15 -Kitchen Sink ADA
-  DIVISION 15 -Kitchen Sink
-  DIVISION 15 -Medical Tranfer Seat ADA
-  DIVISION 15 -refrigerator 2 BLACK
-  DIVISION 15 -refrigerator
-  DIVISION 15 -Wall Hung Lavatory ADA
-  DIVISION 16 - GFCI
-  DIVISION 16 - Smoke Alarm ADA
-  DIVISION 16 - Smoke Alarm CO2
-  DIVISION 16 - Smoke Alarm
-  DIVISION 16 -receptacle
-  DIVISION 16 -swith
-  DIVISION 16 -wall plate
-  SPEC_01

Item:
Structural Grab Bar Winglts

DIVISION 16 - ELECTRICAL

Manufacturer #
Mfr #: RC-RESGBW35-2

Color /Finish
Blk/white

Description

Hollow Wall Anchor, Fire Retardant Structural Plastic, Drill Size 3/4 In., Screw Length 3-1/2 In., Screw Type Phillips, Features Waterproof, Use With Wing Its Grab Bars, Includes Steel Screw, Meets/Exceeds ADA/Commercial Building Codes, Package Quantity 2

REQUIRED:

Winglts Apache200 3/4 in. Drill Bit

- Drills holes through ceramic wall tile in seconds
- Engineered for cordless drills; no adapter or arbor needed
- The preferred drilling method for installing Winglts fasteners



Item: Prefinished Hardboard Panels Steel Framed Interior Sliding Door
60 in. x 81 in. Colonial White .

DIVISION 8 - Doors and
Windows

Manufacturer # Home Depot – Contractor Wardrobe
Model # COL-7281WH2R www.cwdoor.co
Store SKU #429424

Color /Finish :Colonial White

Description

The Colonial Bypass Door features a painted steel frame, prefinished raised 6-panel white hardboard and steel track and channel which provides your interior passageways with functionality and a classic look. Reversible door handing provides flexibility when installing. The Colonial door can also be used in commercial applications.

- Raised 6-panel colonial design
- Prefinished gloss white hardboard panels
- 2-1/4 in. deep steel top channel allows for more height adjustability
- Bottom rolled 1-1/2 in. wheels on jump-proof steel track for durability and smoother operation
- Integrated handle on frame molding for sleek uniform appearance and easy operation
- Easy installation in minutes with simple hand tools
- 60 in. x 81 in. fits width 58 in. - 61 in. and height 80.5 in. - 81.5 in.
- Features prefinished vinyl hardboard panels
- Painted steel frame, track and channel



Item: Ceramic – Floor bath room
American Olean Weddington Russet Uniform Squares Mosaic Ceramic Floor and Wall Tile

DIVISION 9 - FINISHES

Manufacturer #
Model# WDI022HCIY2

Color /Finish
Multi earth tones

Description

American Olean Weddington Russet Uniform Squares Mosaic Ceramic Floor and Wall Tile (Common: 12-in x 12-in;Actual: 11.87-in x 11.87-in

Russet mosaic ceramic tile from the Weddington collection can be used on floors, walls and counters

Smooth surface creates an eye-catching sheen

PEI rating of 4 for moderate to heavy traffic in residential homes

Please inspect tile prior to installation, no adjustments will be allowed after installation

Vitreous tile is suitable for indoor use only

2-in x 2-in square mosaic tiles mounted on a 12-in x 12-in sheet

Durable, easy to clean and low maintenance



Item: Ceramic – Wall tile Accent
American Olean Castlegate Universal Mosaic CG18

DIVISION 9 - FINISHES

Manufacturer # American Olean
Model# CG18

Color /Finish
Multi-earth tones

Description

The soft colors emulate natural stone, but with the easy maintenance of tile.

Mosaic Tile Size: 2" x 2" (12" x 24" sheets)

Tile Thickness: 1/4"

Grout Joint Recommendation: 1/8"

Grout: Unsanded or Epoxy



Item: Ceramic –Wall tile
Daltile Finesse Bright White 6 in. x 6 in. Ceramic Wall Tile (12.50 sq. ft. / case)

DIVISION 9 - FINISHES

Manufacturer #
Model # FE0166HD1P

Color /Finish
Bright White

Description

Highly durable and one of the brightest whites you'll find in tile, the Finesse collection has multiple sizes and shapes to suit just about any ceramic wall tile project. This smooth, glossy 6 in. x 6 in. has a traditional format that's popular on backsplashes and feature walls in the kitchen and bathroom, as well as shower walls. It's a classic tile in a pure white color that is hard to find.

12.5 square feet, 50 pieces per case. Case weight is 35.64 lb.
Grade 1, first-quality ceramic tile for backsplash and wall use
Actual size: 5-15/16 in. width x 5-15/16 in. length x 1/4 in. thick

Model # FE0166HD1P Internet # 201204189 Store SKU # 1001903903



Item: Flooring Vinyl Tile

DIVISION 9 - FINISHES

Shaw Planks WANDERLUST 48in. x 6 in. Vinyl Tile

Manufacturer #
Model# 715

Color /Finish
715- Meridian

Description

Style Number	SA382
Construction	VersaLock
Size	6" x 48"
Thickness	3.2mm
Wear Layer	6mil
Finish	OptiClean Urethane
Edge description	Square
SF per carton	27.58
SF per pallet	2,151.24
Installation	Floating
Classification	Good

Features

- Water resistant

RESILIENT

WANDERLUST
luxury vinyl plank



shawfloors.com
08.11.2016

Shaw
FLOORS

Item: Flooring Vinyl Tile

DIVISION 9 - FINISHES

ARMSTRONG Planks - Brazilian Forest 36 in. x 6 in. Vinyl Tile

Manufacturer #
Model# D2422

Color /Finish
Brazilian cherry

Description

Specifications

Category	Floors
Flooring Type	Vinyl Tile Flooring
Product Number	D2422
Collection	Natural Living
Performance Class	Better
Warranty	Residential Warranty : 15 years ⓘ Light Commercial Warranty : 7 years Vinyl Tile Warranty Guide (PDF - 23KB)
Composition	Vinyl Composition ⓘ
Wear Layer	Urethane No-Wax ⓘ



Planks - Brazilian Forest

36 in. x 6 in. Vinyl Tile



[Write a review](#) [Ask a question](#)

Colors:



Item:

Marble threshold 4x36"

White Double Beveled 4 in. x 36 in. Engineered Marble Threshold Floor and Wall Tile

DIVISION 09 - FINISHES

Manufacturer #

Model # THD2WH4X36DB

Color /Finish

natural

Description

- 3 linear foot per piece, each piece sold individually. Piece weight equals 12 lb.
- Grade I, first-quality engineered marble threshold for floor and wall use
- 4 in. width x 36 in. length x 3/4 in. thick
- Polished smooth finish with a high sheen and slight variation in tone
- P.E.I. Rating is not applicable for natural stone
- Impervious flooring has water absorption of less than 0.5% for indoor or outdoor use and is frost proof



Item: Paint - Wall

DIVISION 9 - FINISHES

SW 6119 Antique White Eggshell Finish

Manufacturer #

Model# SW 6119 Antique White

Color /Finish
Antique White

Description

SW 6119

Antique White

Interior / Exterior

Locator Number: 263-C6

263

COORDINATING COLORS

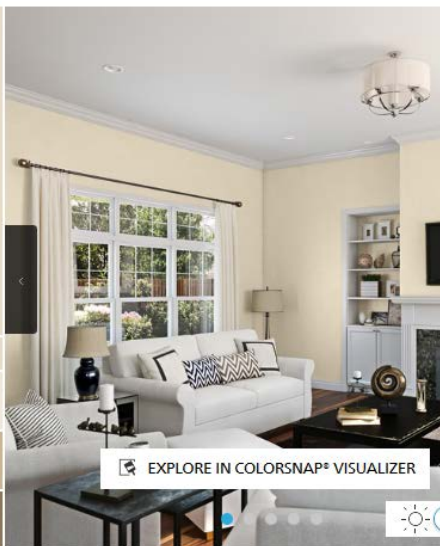
SIMILAR COLORS

DETAILS

SW 7012
Creamy

SW 6121
Whole Wheat

SW 9114
Fallen Leaves



EXPLORE IN COLORSNAP® VISUALIZER

Item: Vinyl Composite Tile
Armstrong VCT Fortress White

DIVISION 9 - FINISHES

Manufacturer #
Product #: 51839

Color /Finish
Multi earth tones on White

Description

American Olean Weddington Russet Uniform Squares Mosaic Ceramic Floor and Wall Tile (Common: 12-in x 12-in; Actual: 11.87-in x 11.87-in)

Features & Details

Size - 12" inch x 12" inch

Thickness - 1/8" inch

Covers 45 square feet /box

Color Name: Fortress White

Manufacturer: Armstrong ARM51839031

Collection: Standard Excelon Imperial Texture

Floor Type: VCT



Item: Wall Mount Rectangular Mirror in Chrome
31.5 in. L x 27.63 in.W

DIVISION 10 – Specialties
ADA

Manufacturer # Home Depot – Gatco Max Collection
Model # 4849S www.cwdoor.co

Color /Finish :Chrome

Description

The Gatco Max Collection offers a range of elegant pieces to define your contemporary bathroom. Beautifully designed for modern appeal and finished in stylish chrome, this Wall Mount Rectangular Mirror features solid brass construction for lasting appeal. The mirror installs easily on your wall and makes a bright, elegant accent above any bathroom vanity.

27.63 in.W x 31.5 in. H, perfect for display above a bathroom vanity

Solid brass construction provides lasting durability

Hand-polished chrome finish creates a sleek, timeless style

Designed for easy, wall-mounted installation



Item: Mirror- Fixed Position Tilted Glass w/Stainless Steel Frame
Bobrick B-293 2436 Mirror, 24" x 36" Fixed Position Tilted Glass w/Stainless Steel Frame

DIVISION 10 – Specialties
ADA

Manufacturer #
B-293 2436

Color /Finish
Glass w/Stainless Steel

Description

The Bobrick B-293 2436 is a fixed-position tilt mirror with a frame. This model has 24" W x 36" H (61 x 91 cm) dimensions. The frame is made of type 304 stainless steel and comes in a satin finish. This model is angled to provide visibility for people in wheelchairs.

- Dimensions: 24" W x 36" H (61 x 91 cm)
- Frame material: 18-8 S, type 304, heavy-gauge stainless steel with satin finish
- Tapers dimensions: From 4" (100mm) depth at top to 1" (25mm) depth at bottom
- Mirror material: No. 1 quality, 1/4" (6mm) select float glass, selected for silvering



Item: Garbage Disposal
InSinkErator Badger I Continuous Feed Garbage Disposal 1/3 HP

DIVISION 11 - EQUIPMENT

Manufacturer #
Model # BADGER I

Color /Finish
Galvanized steel construction

Description

The InSinkErator Badger I Continuous Feed Garbage Disposal 1/3 HP features a quick-mounting system that allows for easy installation or replacement. This sturdy garbage Disposal is constructed from galvanized steel and features a 26 oz. chamber for space-saving waste disposal. The garbage Disposal also features a 1/3 HP motor that rapidly grinds food waste for easy rinsing down the drain.

- Replacement is easy with the Quick Lock sink mount
- 1/3 HP Dura-Drive heavy duty induction motor
- Galvanized steel construction for dependability



Item: Range
GE Freestanding 5-cu. ft. Electric X

DIVISION 11 - EQUIPMENT

Manufacturer #
Model #:JBS45DFWW

Color /Finish
White (Common: 30-in)

Description

- ADA Compliant
- UL Listed
- CSA Approved
- ENERGY STAR®
- Made in America
-

Specifications:

- Dimensions: 28" W x 64-3/4" H x 31-5/8" D
- Fresh Food Capacity: 11.55 Cu. Ft.
- Freezer Capacity: 3.89 Cu. Ft.
- Total Capacity: 15.5 Cu. Ft.
- Refrigerator Shelf Material: Wire
- Amperage: 15 Amps
- Voltage: 120 Volts
- Product Weight: 151 Pounds

GTE16DTH
GE® ENERGY STAR® 15.5 Cu. Ft. Top-Freezer Refrigerator

Features and Benefits

- 2014 ENERGY STAR® qualified
- High-gloss handle - Provides a polished appearance that can be cleaned with ease
- Upfront temperature controls - Easy-to-use controls regulate both fresh food and freezer sections
- Full-width and multi-level adjustable wire shelves - Conveniently holds tall or odd-shaped items in the fresh food section
- Equipped for optional icemaker - Easily accommodates the installation of an icemaker
- Adjustable-humidity drawers - Controls help food stay fresh
- Gallon door storage - Larger items are easily accommodated in the door
- Adjustable wire freezer shelf - Easily adjusts between two positions to accommodate items of all shapes and sizes
- Spillproof freezer floor - Seamless design of the freezer floor wipes up easily for quick cleanup
- Model GTE16DTHWW - White
- Model GTE16DTHCC - Bisque
- Model GTE16DTHBB - Black



Imagination at work



Specification Revised 8/14

Item: Range
GE Freestanding 5-cu ft. Electric

DIVISION 11 - EQUIPMENT

Manufacturer #
JBS45DFBB

Color /Finish
Black (Common: 30-in)

Description

GE 5.0 cu. ft. Electric Range in Black with Storage Drawer cooks more dishes at once. Coil burners (2-2600 Watt and 2-1500 Watt) . Dual element bake in your oven produces even heat and great results. Lift-Up Cook top with Support Rods makes cleaning easy. GE appliances provide up-to-date technology and exceptional quality to simplify the way you live. With a timeless appearance, this family of appliances is ideal. Coming from one of the most trusted names in America, you know that this entire selection of appliances is as advanced as it is practical.



Features:

- Upfront controls
- Minimize need to reach
- 5.0 cu. ft. oven capacity
- Cook more dishes at once
- Standard clean oven
- Smooth surface and rounded corners make clean-up quick and easy
- Coil heating elements Provide even heat and easy cleanup
- Removable full-width storage drawer
Store cookware or kitchen accessories



ADA Compliant

Designed to be accessible and easy to open

Item: Range
GE Freestanding 5-cu ft. Electric X

DIVISION 11 - EQUIPMENT

Manufacturer #
Model #:JBS45DFWW

Color /Finish
White (Common: 30-in)

Description

GE 5.0 cu. ft. Electric Range in White with Storage Drawer cooks more dishes at once. Coil burners (2-2600 Watt and 2-1500 Watt) . Dual element bake in your oven produces even heat and great results. Lift-Up Cooktop with Support Rods makes cleaning easy. GE appliances provide up-to-date technology and exceptional quality to simplify the way you live. With a timeless appearance, this family of appliances is ideal. Coming from one of the most trusted names in America, you know that this entire selection of appliances is as advanced as it is practical.



Upfront Controls

Minimize need to reach.

5.0 cu. ft. Oven Capacity

Cook more dishes at once.

Standard Clean Oven

Provide even heat and easy cleanup.

Dual-Element Bake

Upper and lower elements produce even heat and great results.

Removable Full Width Storage Drawer

Convenient drawer can be used for storing cookware or kitchen accessories.

Item: BATH Faucet
Delta Foundations Core B Lavatory Faucet Chrome Single Handle With Pop-Up

DIVISION 15 - Mechanical

Manufacturer #
Mfg #B510LF

Color /Finish
Chrome

Description

Delta(R) Foundations Core-B Single Handle Bath Faucet With Pop-Up - Chrome Finish - Washerless Function - With Metal Pop-Up - Ultra Low Lead - 1.5 GPM @ 60 PSI - Mfg #B510LF

BRASS CRAFT · CR19C ANGLE STOPS, 51-12A BRAIDED
STAINLESS STEEL SUPPLIES AND 649SS ESCUTCHEONS, KEENEY
5700PC OFFSFT TYPE GRID DRAIN AND 5463XPC CAST BRASS TRA



Item: Elongated Toilet Bowl ADA
American Standard® Cadet® PRO Elongated Toilet Bowl ADA

DIVISION 15 - Mechanical

Manufacturer #
Mfg #3517.A101

Color /Finish
white

Description

American Standard® PRO Cadet® 1.28 GPF Toilet Bowl - Virtually Eliminate Call-Backs For Clogged Toilets And Get A Toilet With A Sleek, Modern Design - Toilet Bowl, Tank Sold Separately - Elongated Bowl (ADA) - 2-1/8" Trapway With EverClean™ Antimicrobial Finish And PowerWash™ Rim That Scrubs Bowl With Each Flush - 16-1/2" Bowl Height, Meets ADA Requirements - 12" Rough-In Or 10" Rough-In When Used With 404765 Tank - Uses 20% Less Water Than Standard 1.6 GPF Toilet - 5-Year Warranty - Use With American Standard Cadet PRO Toilet Tank Only (698572 1.6 GPF, 404776 1.28 GPF, 696581 Right-Hand Trip Lever 1.28 GPF, 404765 10" Rough-In 1.28 GPF) - Mfg #3517.A101

[Home](#) / American Standard® Cadet® PRO Elongated Toilet



Item: Kitchen Faucet
Delta Foundations Core B Kitchen Faucet Chrome Single Handle

DIVISION 15 - Mechanical

Manufacturer #
Mfg #B1310LF

Color /Finish
Chrome

Description

Delta® Foundations Core-B Single Handle Kitchen Faucet - Chrome Finish - Washerless Function - 1.8 GPM @ 60 PSI - Less Spray - Mfg #B1310LF



Item: Shower Valve
Delta R10000-UNWS MultiChoice Universal Tub and Shower Valve Body

DIVISION 15 - Mechanical

Manufacturer #
R10000-UNWS

Color /Finish
Cast metal

Description

Valve body only
1/2" universal inlets accept 1/2" copper, 1/2" iron pipe, PEX or CPVC adapters
1/2" universal outlets, inlets/outlets have male threads
Back-to-back capability
BX=single box model
BXT=single box model, thin wall mounting kit included
WS=with stops, single box model
Lifetime Faucet and Finish Warranty



Item: Toilet tank
American Standard® Cadet® PRO 1.28 Gallon Toilet Tank - 12" Rough-In

DIVISION 15 - Mechanical

Manufacturer #
Mfg#4188.A104

Color /Finish
Chrome

Description

American Standard® Cadet® PRO 1.28 GPF Toilet Tank - Virtually Eliminate Call-Backs For Clogged Toilets And Get A Toilet With A Sleek, Modern Design - Toilet Tank, Bowl Sold Separately - 3" Flush Valve, Fluidmaster® Brass Shank Fill Valve, Brass Tank Lever - LeftHand Tank - 12" Rough-In - Uses 20% Less Water Than Standard 1.6 GPF Toilet - 5-Year Warranty - Use With American Standard Cadet PRO Toilet Bowl Only (404781 Round, 189818 Round ADA, 404768 Elongated, 404767 Elongated ADA, 404766 14" Rough-In Elongated ADA) - Mfg#4188.A104



Item: Tub/Shower, Trim,
Delta Tub/Shower, Trim, Lever Handle, Chrome ADA

DIVISION 15 - Mechanical

Manufacturer #
Mfr #: T13420

Color /Finish
Chrome

Description

Product Details

Classic, sensible styling that complements any home

Handle included

Single lever handle for ease of temperature and volume control

Monitor® Scald-guard® valve keeps water temperature within +/-3°F

For use with MultiChoice Universal rough valve body

Order MultiChoice Universal rough-in separately , See Sec

Easy-to-clean, Touch-Clean® showerhead provides full spray pattern



Item: Under Sink Protector ADA
Plumberex Pro-Extreme™ Sink Tubular ADA Cover

DIVISION 15 - Mechanical

Manufacturer #
Mfg #x4333

Color /Finish
White PVC

Description

Plumberex Pro-Extreme™ Under Lav Protector - Insulates Drain And Supply Lines Under Lavatories To Protect Persons Confined To Wheelchairs - 100% Molded PVC With Antimicrobial Agents - One-Piece Design With Tamper Resistant Snap-Lock Fasteners - Fits Brass/Plastic 1-1/4" And 1-1/2" P-Traps - ADA 4.19.4 And ANSI 117.1 Compliant - Made In USA - Meets All Plumbing Codes But Not Fire And Building Codes - ASME 18.9 - Code Requires Covering P-Trap Drain And Both Hot & Cold Water Supplies, - Mfg #x4333

[Home](#) / [Plumberex Pro-Extreme™ Sink Tubular ADA Cover](#)



Item: Bath tub
 Bootz® Enameled Steel Bathtub - Right-Handed Drain/ Left-Handed Drain - Self-Leveling For Easy Install - White - 5' Standard Design - 60W x 30D x 14-1/4"H - Mfg #011-2364

DIVISION 15 - Mechanical

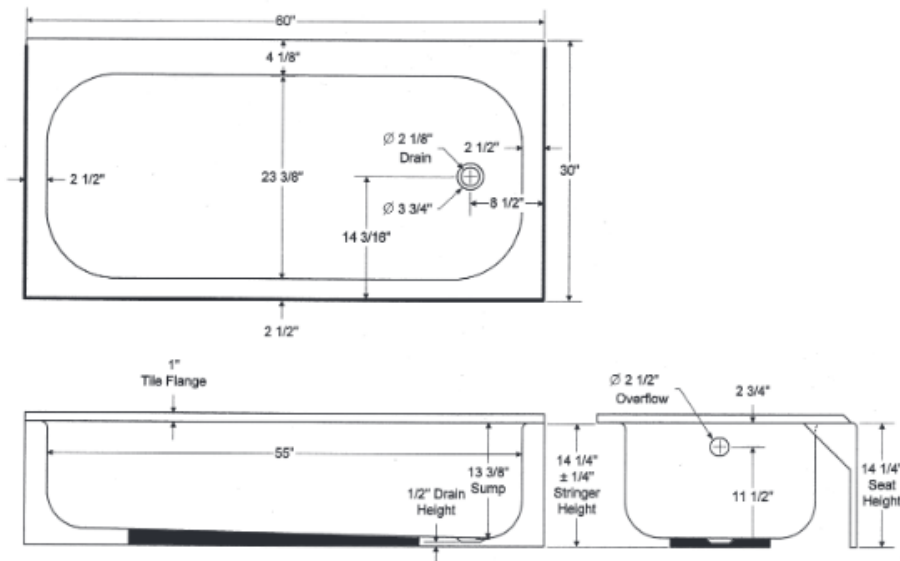
Manufacturer #
 Mfg #GE125213
 011-2364 RH Drain, slip resistant bottom
 011-2365 LH Drain, slip resistant bottom

Color /Finish
 white

Description

Bootz® Enameled Steel Bathtub - Right-Handed Drain - Self-Leveling For Easy Install - White - 5' Standard Design - 60W x 30D x 14-1/4"H - Mfg #011-2364

5' Aloha - Bathtub: 011- 2360, 2361, 2364, 2365



Product Type: Bathtub
 Brand: Bootz
 Collection: Aloha
 ADA Compliant: ADA
 Compliant
 Capacity: 39 gal
 Color: White
 Commercial -
 Residential: Residential
 Configuration: Right
 Hand
 Connections:
 Conventional Installation
 Dimensions: 60 in X
 30 in X 14-1/4 in
 Material: Porcelain /
 Steel
 Mount: Alcove
 Shape: Rectangular
 Size: 5 ft

Item:

15 Amp Decorator Receptacle - White - Package of 10

DIVISION 16 - ELECTRICAL

Manufacturer #

Part #: 336403

Color /Finish

White

Description

15 Amp Single Pole Wall Switch - White - Package Of 10

15 Amp Decorator Receptacle "Pkg Of 10" - 125 Volt - Quickwired And Side Wired - Nylon - White - Use With Copper Wire Only

[Home](#) / 15 Amp Decorator Receptacle - White -



Item: Elongated Toilet Bowl ADA
American Standard Laurel Elongated Toilet Seat with Cover, White

DIVISION 15 - Mechanical

Manufacturer #
5311.012.020

Color /Finish
white

Description

American Standard Laurel EL Molded Wood Seat and Cover provides the classic design perfect for any style. Additional Features: High-gloss molded wood seat Closed elongated seat with cover Laurel seat and cover Bolts and dual-faced adhesive washers Fits any elongated toilet. Durable molded wood construction. American standard toilet seats. Complete with bolts and dual-faced adhesive washers. Closed, elongated seat with cover. Fits any elongated toilet. Choose from several color options. Overall dimensions: 18L x 14.25W x 2.75H in..



Item: Hand Shower
Delta® Activotouch Slide Bar Hand Shower ADA

DIVISION 15 – Mechanical
ADA

Manufacturer #
Mfr #51504

Color /Finish
Chrome

Description

Shower
Delta® Activotouch Slide Bar Hand Shower - Chrome Finish - Nine-Setting Hand Shower - Features Touch-Clean® Spray Holes - 60" - 82" Stretchable Metal Hose - 28" Wall Bar W/Adjustable Slide - Push Button Spray Selection - 2.5 GPM @ 80 PSI - Mfg #51504

Delta
9-Spray Slide Bar Hand Shower in Chrome



Click Image to Zoom

Item: Kitchen Sink
ADA 25 x 21-1/4" Single Bowl Stainless Steel Kitchen Sink 3-Hole 5-3/8" Depth

DIVISION 15 - Mechanical

Manufacturer #
Mfg #GE125213

Color /Finish
Satin Finish

Description

Aspen® 25W x 22"L ADA Single Bowl Stainless Steel Sink - Three Hole - 6" Depth - 21 Gauge - **Rear Right Drain** - Satin Finish - Integrated Mounting System - ADA Compliant - Sound Deadening Bottom - Standard 3-1/2" Drain -

[Home](#) / ADA 25 x 21-1/4" Single Bowl Stainless Steel Kitchen :



Item: Kitchen Sink
ADA 25 x 21-1/4" Single Bowl Stainless Steel Kitchen Sink 3-Hole 5-3/8" Depth

DIVISION 15 - Mechanical

Manufacturer #
Mfg #GE125213

Color /Finish
Satin Finish

Description

Aspen® 25W x 22"L ADA Single Bowl Stainless Steel Sink - Three Hole - 6" Depth - 21 Gauge - **Rear Right Drain** - Satin Finish - Integrated Mounting System - ADA Compliant - Sound Deadening Bottom - Standard 3-1/2" Drain -

[Home](#) / [Aspen 25 x 22" Single Bowl Stainless Steel Kitchen](#)



Item: Folding Universal Sliding Transfer Bench - ADA

DIVISION 15 - Mechanical

Manufacturer # Drive Medical
RTL12075

Color /Finish
White /Aluminum

Description <http://www.drivemedical.com/index.php/folding-universal-sliding-transfer-bench-253.html>

The new Folding Universal Sliding Transfer Bench from Drive Medical offers your customers an easy way to transfer in and out of the tub. The bench slides left and right along the frame, and comes equipped with a seat belt for added safety.

Seat Dimensions	22.5" (W) x 18.5" (D)
Height	21" - 25"
Weight	16 lbs.
Carton Shipping Weight	38 lbs.
Weight Limit	300 lbs.
Warranty	Limited Lifetime

RTL12075



Features

- Comes with safety net under seat to prevent the dropping of soap, shampoo, etc
- Folds flat for transport and storage
- Seat belt for added safety
- Standard removable soap dish
- Transfer Bench slides left and right along frame for easy entry into and out of tub

Item: Refrigerator
 GE® 15.5 Cu. Ft. Top-Freezer Refrigerator ENERGY STAR®

DIVISION 11 - EQUIPMENT

Manufacturer #
 Model #: GTE16DTHBB

Color /Finish
 Black

Description

GE® 15.5 Cu. Ft. capacity top freezer energy star qualified refrigerator is perfect for any kitchen setting. It features upfront temperature controls which are easy to use controls that regulate both fresh food and freezer sections. Additionally, it features adjustable wire shelves. These moveable racks can handle a variety of foods easily. The clear drawers on this refrigerator make finding your favorite items quick and easy.



Features:

- Energy Star Rated This refrigerator meets the Energy Star guidelines for energy efficiency.
- Upfront Temperature Controls
- Easy-to-use controls regulate both fresh food and freezer sections
- Conveniently holds tall or odd-shaped items in the fresh food section.
- Adjustable-Humidity Drawers
- Controls helps food stay fresh.
- Gallon Door Storage
- Larger items are easily accommodated in the door.
- Wire Freezer Shelf
- Provides additional storage for frozen foods.
- #1 in Quality and Dependability: Among 14-18 cu. ft. refrigerators based on an independent study of property maintenance personnel.
- Adjustable wire freezer shelf: Easily adjusts between two positions to accommodate items of all shapes and sizes

OVERALL DIMENSIONS	Height to top of hinge (in.) A	64-3/4
	Height to top of case (in.) B	64-1/4
	Case depth without door (in.) C	25-3/4
	Case depth less door handle (in.) D	29-1/2
	Case depth with door handle (in.) E	31-5/8
	Depth with fresh food door open 90° (in.) F	55-7/8
	Width (in.) G	28
	Width with door open 90° with door handle (in.) H	30-5/8
AIR CLEARANCES	Each side (in.)	3/4
	Top (in.)	1
	Back (in.)	2

ADA compliant
ADA Compliant
 Designed to be accessible and easy to open

ENERGY STAR
ENERGY STAR
Qualified

Made In America
 70 to 90% U.S. Content
 Product details at
GEAppliances.com/USA

--	--

Item: Refrigerator
GE 14.6 cu. ft. Top Freezer Refrigerator

DIVISION 11- EQUIPMENT

Manufacturer #
Model #:GTEI5CTHRWW

Color /Finish
WHITE

Description

GE's 14.6 cubic feet capacity top freezer energy star qualified refrigerator is perfect for any kitchen setting. It features upfront temperature controls which are easy to use controls that regulate both fresh food and freezer sections. Additionally, it features adjustable wire shelves. These moveable racks can handle a variety of foods easily. The clear drawers on this refrigerator make finding your favorite items quick and easy. There's also an optional ice maker for this fridge (IM4A Ready).



Features:

- Upfront temperature controls
- Easy-to-use controls
- Adjustable wire shelves
- Moveable racks can
- Clear drawers
- Transparent drawers
- Gallon door storage
- Larger in the door bins
- Adjustable wire freezer shelf
- Provides additional storage for frozen foods
- #1 in Quality and Dependability
- 1-UL Listed, ADA Compliant

Item: Wall Hung Lavatory ADA
 Seasons® White China Wall Hung Lavatory - 17-3/8 x 19-1/8" - 4" Centers - Front
 Overflow

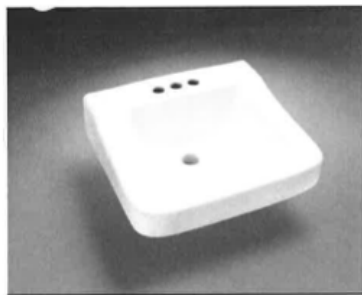
DIVISION 15 - Mechanical

Manufacturer #
 Mfg #GE125213

Color /Finish
 white

Description

White vitreous china wall hung lavatory
 Front over flow
 17-3/8 In. x 19-1/8 In.
 ADA compliant



Wall Mount Lavatory

PRODUCT FEATURES

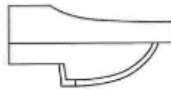
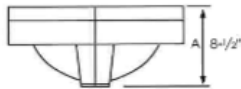
- Vitreous China
- 19-1/8" x 17-3/8" Rectangle
- 4" Center
- Front Overflow
- ADA Compliant
- Available in White or Biscuit

CERTIFICATIONS

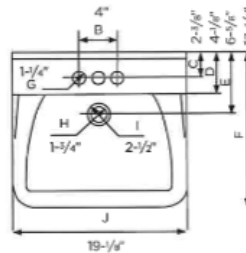
- ANSI, CSA, IAPMO

WARRANTY

- One Year Limited Warranty
- See Official Warranty Information for Additional Details



Wall Mount Lavatory
 4" Center



Item: GFCI

DIVISION 16 - ELECTRICAL

Hubbell Circuit Guard® 15A GFCI Receptacle With Matching Nylon Wallplate,
White

Manufacturer #
Mfg #GF15WLA

Color /Finish
White

Description

Hubbell 15 Amp Circuit Guard® Lighted GFCI Duplex Receptacle - 125 Volt - 20 Amp Feed-Through - NEMA 5-15 - Back And Side Wired - Color-Matched Test And Reset Buttons - With Wall Plate - White - Mfg #GF15WLA



Item:

Fire Alarm Systems Smoke Alarm ADA
120VAC/9VDC Direct Wire Cord Smoke Alarm With ADA Compliant Strobe

DIVISION 16 - ELECTRICAL

Manufacturer #
Mfg #7139CS-W

Color /Finish
White

Description

Direct Wire Cord Smoke Alarm With ADA Compliant Strobe - 120VAC Direct Wire With 9VDC Battery Backup - Photoelectric Smoke Alarm - Temporal 3 Sounder - Includes 177 Candela ADA Compliant Strobe - Includes 1 Set Form A/Form C Relay Contacts - Tandem Interconnect Capabilities With Other Gentex Alarms - Low Or Missing Battery Indicator - Wall Mount - Mfg #7139CS-W



Item: Smoke and Carbon Monoxide Alarm with Battery Backup
Alarm Sensor Type : Ionization

DIVISION 16 -
ELECTRICAL

Manufacturer : **Kidde**
i12010SCO or Approved Equal

Color /Finish White / Plastic

Description

The **Kidde i12010SCO** is a hardwired combination smoke and carbon monoxide (CO) alarm. It features a sealed lithium battery back-up for worst case scenarios when the power line is disconnected. This battery is tamper-proof and lasts for 10 years for a long-lasting, worry-free operation. When the battery is at the end of its life, it will chirp so that this alarm can be replaced.

This Kidde carbon monoxide and smoke detector uses state-of-the-art technology to detect smoldering flames, fast flaming and carbon monoxide build-up. This alarm uses sensor technology that combines ionization and electrochemical sensors to successfully detect threats. This intelligent sensor technology also reduces the chance of a nuisance alarm occurring.

When triggered, this alarm uses a voice warning system to announce the type of threat, allowing for an appropriate response. It can be connected to up to 24 Kidde devices for whole home protection. It also features a green LED light that shows when this alarm is properly connected.

- Power Source: 120VAC, 60Hz 45mA max per alarm. Sealed lithium battery backup
- Sensor: Sensor: Ionization
- CO Sensor: Electrochemical
- Audio Alarm: 85dB at 10ft
- Temperature Range: 40°F (4.4°C) to 100°F (37.8°C)
- Humidity Range: 10%-95% relative humidity, non-condensing
- Size: 5.5" in diameter x 1.75" depth
- Interconnects: Up to 24 Kidde devices (of which 18 can be initiating)



Item: Smoke Alarm with 10 year Battery Backup
Alarm Sensor Type : Ionization

DIVISION 16 -
ELECTRICAL

Manufacturer : **Kidde**
Kidde i12010S

Color /Finish White / Plastic

Description

The Kidde i12010S is a hardwired 120V smoke alarm. It features a sealed lithium battery back-up for worst case scenarios when power to this device is disconnected. This battery is sealed-in and lasts for 10 years for a long-lasting, worry-free operation. As it is intended to work for 10 years, the homeowner doesn't have to worry about battery replacement in this time period. When the battery is at the end of its life, it will chirp so that this alarm can be replaced.

This Kidde smoke detector uses state-of-the-art technology to detect harmful smoke build-up. This alarm uses ionization sensing technology, which helps detect invisible fire particles associated with flaming fires as opposed to photoelectric sensors that detect visible smoke particles. It is recommended that both ionization and photoelectric alarms are installed throughout the home to insure maximum detection. This model features a dust cover that protects the unit from contaminants when installing, which reduces the chance of a nuisance alarm occurring down the line. This alarm can be connected to up to 24 Kidde devices, including carbon monoxide (CO) and heat alarms, for whole home protection.

- Power Source: 120VAC (60 Hz, 45mA Max)
- Sensor: Ionization
- Audio Alarm: 85dB at 10ft
- Temperature Range: 40°F (4.4°C) to 100°F (37.8°C)
- Humidity Range: Up to 95% relative humidity (RH), non-condensing
- Size: 5.5" in diameter x 1.75" depth
- Interconnects: Up to 24 Kidde devices



Item:
15 Amp Decorator Wall Receptacle

DIVISION 16 - ELECTRICAL

Manufacturer #
Mfg #RRD15W

Color /Finish
White

Description

Hubbell 15 Amp Decorator Duplex Wall Receptacle - 125 Volt - Double Pole - Three Wire - NEMA 5-15R - Push And Side Wired - White - Nylon - Use With Copper Wire Only - Mfg #RRD15W

[Home](#) / 15 Amp Decorator Receptacle - White - Package of



Item:
15 Amp Single Pole Wall Switch - White -

DIVISION 16 - ELECTRICAL

Manufacturer #
Part #: 336406

Color /Finish
White

Description

15 Amp Single Pole Wall Switch - White - Package Of 10

15 Amp Decorator Wall Switch "Pkg Of 10" - 120 Volt - Single Pole - Ground Screw - Quickwired and Side Wired - Use With Copper Wire Only - White

[Home](#) / 15 Amp Single Pole Wall Switch - White -



Item:

Decorator Wall Plate
Single Gang Decorator Wall Plate - White - Package Of 10

DIVISION 16 - ELECTRICAL

Manufacturer #
Part #: 336037

Color /Finish
White

Description

Single-Gang Decorator Wall Plate "Pkg Of 10" - Unbreakable Polycarbonate - Captive Screw - White - 2-3/4W x 4-1/2"H

[Home](#) / Single Gang Decorator Wall Plate - White - Package

