



Project Summary

Entire House

Job:
Date: May 09, 2013
By: Elysian Energy, LLC

Project Information

For: Redevelopment Authority of Prince George's County
3413 Glen Dr., Suitland, MD 20746

Notes:

Design Information

Weather: Washington R. Reagan AP, DC, US

Winter Design Conditions

Outside db	20 °F
Inside db	68 °F
Design TD	48 °F

Summer Design Conditions

Outside db	92 °F
Inside db	78 °F
Design TD	14 °F
Daily range	M
Relative humidity	50 %
Moisture difference	34 gr/lb

Heating Summary

Structure	19906 Btuh
Ducts	0 Btuh
Central vent (0 cfm)	0 Btuh
Humidification	0 Btuh
Piping	0 Btuh
Equipment load	19906 Btuh

Sensible Cooling Equipment Load Sizing

Structure	13600 Btuh
Ducts	0 Btuh
Central vent (0 cfm)	0 Btuh
Blower	0 Btuh
Use manufacturer's data	n
Rate/swing multiplier	0.97
Equipment sensible load	13178 Btuh

Infiltration

Method	Simplified	
Construction quality	Average	
Fireplaces	0	
	Heating	Cooling
Area (ft²)	1656	1656
Volume (ft³)	10002	10002
Air changes/hour	0.50	0.26
Equiv. AVF (cfm)	83	43

Latent Cooling Equipment Load Sizing

Structure	1703 Btuh
Ducts	0 Btuh
Central vent (0 cfm)	0 Btuh
Equipment latent load	1703 Btuh
Equipment total load	14881 Btuh
Req. total capacity at 0.70 SHR	1.6 ton

Heating Equipment Summary

Make	Goodman	
Trade		
Model	GMH95 0904CXA	
AHRI ref		
Efficiency	94 AFUE	
Heating input	92000 MBtuh	
Heating output	89000 Btuh	
Temperature rise	97 °F	
Actual air flow	833 cfm	
Air flow factor	0.042 cfm/Btuh	
Static pressure	0 in H2O	
Space thermostat		

Cooling Equipment Summary

Make		
Trade		
Cond		
Coil		
AHRI ref		
Efficiency	13.2 EER, 16 SEER	
Sensible cooling	24220 Btuh	
Latent cooling	10380 Btuh	
Total cooling	34600 Btuh	
Actual air flow	833 cfm	
Air flow factor	0.061 cfm/Btuh	
Static pressure	0 in H2O	
Load sensible heat ratio	0.89	

Calculations approved by ACCA to meet all requirements of Manual J 8th Ed.



AED Assessment Entire House

Job:
Date: May 09, 2013
By: Elysian Energy, LLC

Project Information

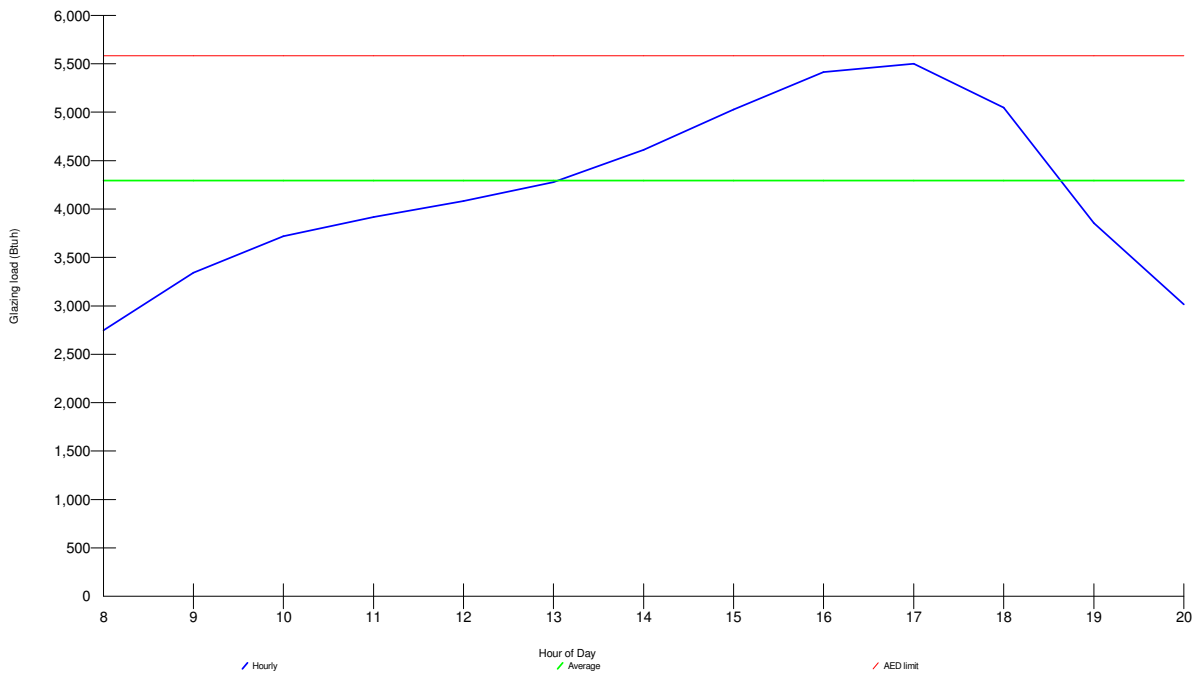
For: Redevelopment Authority of Prince George's County
3413 Glen Dr., Suitland, MD 20746

Design Conditions

Location:		Indoor:		Heating	Cooling
Washington R. Reagan AP, DC, US		Indoor temperature (°F)		68	78
Elevation: 10 ft		Design TD (°F)		48	14
Latitude: 39°N		Relative humidity (%)		50	50
Outdoor:	Heating	Cooling	Moisture difference (gr/lb)		
Dry bulb (°F)	20	92	39.0		34.0
Daily range (°F)	-	16 (M)	Infiltration:		
Wet bulb (°F)	-	75			
Wind speed (mph)	15.0	7.5			

Test for Adequate Exposure Diversity

Hourly Glazing Load



Maximum hourly glazing load exceeds average by 28.1%.

House has adequate exposure diversity (AED), based on AED limit of 30%.

AED excursion: 0 Btuh



Right-J® Worksheet Entire House

Job:
Date: May 09, 2013
By: Elysian Energy, LLC

1 Room name		Entire House								Living_Dining Rm				
2 Exposed wall		292.0 ft								27.0 ft				
3 Room height		6.0 ft								9.0 ft				
4 Room dimensions										12.0 x 15.0 ft				
5 Room area		1656.0 ft²								180.0 ft²				
	Ty	Construction number	U-value (Btuh/ft²·°F)	Or	HTM (Btuh/ft²)		Area (ft²) or perimeter (ft)		Load (Btuh)		Area (ft²) or perimeter (ft)		Load (Btuh)	
					Heat	Cool	Gross	N/P/S	Heat	Cool	Gross	N/P/S	Heat	Cool
6	W	12C-0sw	0.091	ne	4.37	2.02	36	28	122	57	0	0	0	0
	G	4A5-2ov	0.470	ne	22.56	25.91	8	0	180	207	0	0	0	0
	W	12E-0sw	0.068	ne	3.26	1.23	162	126	411	155	0	0	0	0
	G	4A5-2ov	0.470	ne	22.56	25.91	8	0	180	207	0	0	0	0
11	D	11J0	0.600	ne	28.80	16.32	28	28	806	457	0	0	0	0
	W	12F-0sw	0.065	ne	3.12	1.04	126	114	356	119	0	0	0	0
	G	4A5-2ov	0.470	ne	22.56	25.91	12	0	271	311	0	0	0	0
	W	13AA-0fc	0.304	ne	14.59	5.50	55	55	803	303	0	0	0	0
	W	12C-0sw	0.091	se	4.37	2.02	216	192	839	388	0	0	0	0
	G	4A5-2ov	0.470	se	22.56	30.72	24	0	541	737	0	0	0	0
	W	12E-0sw	0.068	se	3.26	1.23	54	54	176	66	0	0	0	0
	W	12F-0sw	0.065	se	3.12	1.04	168	152	474	158	0	0	0	0
	G	4A5-2ov	0.470	se	22.56	30.72	16	0	361	491	0	0	0	0
	W	13AA-0fc	0.304	se	14.59	5.50	75	75	1094	413	0	0	0	0
	W	12C-0sw	0.091	sw	4.37	2.02	198	145	633	293	108	71	310	143
	G	4A5-2ov	0.470	sw	22.56	30.72	32	0	722	983	16	0	361	491
	D	11J0	0.600	sw	28.80	16.32	21	21	605	343	21	21	605	343
	W	12F-0sw	0.065	sw	3.12	1.04	126	118	368	123	0	0	0	0
	G	4A5-2ov	0.470	sw	22.56	30.72	8	0	180	246	0	0	0	0
	W	13AA-0fc	0.304	sw	14.59	5.50	55	55	803	303	0	0	0	0
	W	12C-0sw	0.091	nw	4.37	2.02	216	184	804	372	135	103	450	208
	G	4A5-2ov	0.470	nw	22.56	25.91	32	0	722	829	32	0	722	829
	W	12E-0sw	0.068	nw	3.26	1.23	54	46	150	57	0	0	0	0
	G	4A5-2ov	0.470	nw	22.56	25.91	8	0	180	207	0	0	0	0
	W	12F-0sw	0.065	nw	3.12	1.04	168	152	474	158	0	0	0	0
	G	4A5-2ov	0.470	nw	22.56	25.91	16	0	361	415	0	0	0	0
	W	13AA-0fc	0.304	nw	14.59	5.50	75	75	1094	413	0	0	0	0
	C	16B-38ad	0.026	-	1.25	1.32	636	636	794	838	42	42	52	55
	F	22A-tpm	1.180	-	56.64	0.00	108	18	1000	0	0	0	0	0
6	c) AED excursion													252
	Envelope loss/gain								15507	9647			2500	2323
12	a) Infiltration								4399	662			599	90
	b) Room ventilation								0	0			0	0
13	Internal gains:		Occupants @	230		3				690	0			0
			Appliances/other							2600				900
	Subtotal (lines 6 to 13)								19906	13600			3099	3313
	Less external load								0	0			0	0
	Less transfer								0	0			0	0
	Redistribution								0	0			1	1
14	Subtotal								19906	13600			3101	3314
15	Duct loads								0	0	-0%	0%	0	0
	Total room load								19906	13600			3101	3314
	Air required (cfm)								833	833			130	203

Calculations approved by ACCA to meet all requirements of Manual J 8th Ed.



Right-J® Worksheet Entire House

Job:
Date: May 09, 2013
By: Elysian Energy, LLC

1 2 3 4 5	Room name				Bedroom 1				Hall					
	Exposed wall				20.0 ft				0 ft					
	Room height				9.0 ft heat/cool				9.0 ft heat/cool					
Room dimensions				10.0 x 10.0 ft				3.0 x 5.0 ft						
Room area				100.0 ft²				15.0 ft²						
	Ty	Construction number	U-value (Btuh/ft²·°F)	Or	HTM (Btuh/ft²)		Area (ft²) or perimeter (ft)		Load (Btuh)		Area (ft²) or perimeter (ft)		Load (Btuh)	
					Heat	Cool	Gross	N/P/S	Heat	Cool	Gross	N/P/S	Heat	Cool
6	W	12C-0sw	0.091	ne	4.37	2.02	0	0	0	0	0	0	0	0
	W	4A5-2ov	0.470	ne	22.56	25.91	0	0	0	0	0	0	0	0
	W	12E-0sw	0.068	ne	3.26	1.23	0	0	0	0	0	0	0	0
	W	4A5-2ov	0.470	ne	22.56	25.91	0	0	0	0	0	0	0	0
11	W	11J0	0.600	ne	28.80	16.32	0	0	0	0	0	0	0	0
	W	12F-0sw	0.065	ne	3.12	1.04	0	0	0	0	0	0	0	0
	W	4A5-2ov	0.470	ne	22.56	25.91	0	0	0	0	0	0	0	0
	W	13AA-0fc	0.304	ne	14.59	5.50	0	0	0	0	0	0	0	0
	W	12C-0sw	0.091	se	4.37	2.02	90	82	358	166	0	0	0	0
	W	4A5-2ov	0.470	se	22.56	30.72	8	0	180	246	0	0	0	0
	W	12E-0sw	0.068	se	3.26	1.23	0	0	0	0	0	0	0	0
	W	12F-0sw	0.065	se	3.12	1.04	0	0	0	0	0	0	0	0
	W	4A5-2ov	0.470	se	22.56	30.72	0	0	0	0	0	0	0	0
	W	13AA-0fc	0.304	se	14.59	5.50	0	0	0	0	0	0	0	0
	W	12C-0sw	0.091	sw	4.37	2.02	90	74	323	149	0	0	0	0
	W	4A5-2ov	0.470	sw	22.56	30.72	16	0	361	491	0	0	0	0
	W	11J0	0.600	sw	28.80	16.32	0	0	0	0	0	0	0	0
	W	12F-0sw	0.065	sw	3.12	1.04	0	0	0	0	0	0	0	0
	W	4A5-2ov	0.470	sw	22.56	30.72	0	0	0	0	0	0	0	0
	W	13AA-0fc	0.304	sw	14.59	5.50	0	0	0	0	0	0	0	0
	W	12C-0sw	0.091	nw	4.37	2.02	0	0	0	0	0	0	0	0
	W	4A5-2ov	0.470	nw	22.56	25.91	0	0	0	0	0	0	0	0
	W	12E-0sw	0.068	nw	3.26	1.23	0	0	0	0	0	0	0	0
	W	4A5-2ov	0.470	nw	22.56	25.91	0	0	0	0	0	0	0	0
	W	12F-0sw	0.065	nw	3.12	1.04	0	0	0	0	0	0	0	0
	W	4A5-2ov	0.470	nw	22.56	25.91	0	0	0	0	0	0	0	0
	W	13AA-0fc	0.304	nw	14.59	5.50	0	0	0	0	0	0	0	0
	C	16B-38ad	0.026	-	1.25	1.32	32	32	40	42	0	0	0	0
	F	22A-tpm	1.180	-	56.64	0.00	0	0	0	0	0	0	0	0
6	c) AED excursion													0
	Envelope loss/gain								1263	1044			0	0
12	a) Infiltration								444	67			0	0
	b) Room ventilation								0	0			0	0
13	Internal gains: Occupants @ 230						2			460	0			0
	Appliances/other									0				0
	Subtotal (lines 6 to 13)								1707	1571			0	0
	Less external load								0	0			0	0
	Less transfer								0	0			0	0
	Redistribution								0	0			0	0
14	Subtotal								1707	1571			0	0
15	Duct loads						-0%	0%	0	0			0	0
	Total room load								1707	1571			0	0
	Air required (cfm)								71	96			0	0

Calculations approved by ACCA to meet all requirements of Manual J 8th Ed.



Right-J® Worksheet Entire House

Job:
Date: May 09, 2013
By: Elysian Energy, LLC

1 2 3 4 5	Room name				Bathroom				Bedroom 2					
	Exposed wall				5.0 ft				13.0 ft					
	Room height				9.0 ft				9.0 ft					
Room dimensions				7.0 x 5.0 ft				10.0 x 9.0 ft						
Room area				35.0 ft²				90.0 ft²						
	Ty	Construction number	U-value (Btuh/ft²·°F)	Or	HTM (Btuh/ft²)		Area (ft²) or perimeter (ft)		Load (Btuh)		Area (ft²) or perimeter (ft)		Load (Btuh)	
					Heat	Cool	Gross	N/P/S	Heat	Cool	Gross	N/P/S	Heat	Cool
6	W	12C-0sw	0.091	ne	4.37	2.02	0	0	0	0	36	28	122	57
	W	4A5-2ov	0.470	ne	22.56	25.91	0	0	0	0	8	0	180	207
	W	12E-0sw	0.068	ne	3.26	1.23	0	0	0	0	0	0	0	0
	W	4A5-2ov	0.470	ne	22.56	25.91	0	0	0	0	0	0	0	0
11	D	11J0	0.600	ne	28.80	16.32	0	0	0	0	0	0	0	0
	W	12F-0sw	0.065	ne	3.12	1.04	0	0	0	0	0	0	0	0
	W	4A5-2ov	0.470	ne	22.56	25.91	0	0	0	0	0	0	0	0
	W	13AA-0fc	0.304	ne	14.59	5.50	0	0	0	0	0	0	0	0
	W	12C-0sw	0.091	se	4.37	2.02	45	37	162	75	81	73	319	147
	W	4A5-2ov	0.470	se	22.56	30.72	8	0	180	246	8	0	180	246
	W	12E-0sw	0.068	se	3.26	1.23	0	0	0	0	0	0	0	0
	W	12F-0sw	0.065	se	3.12	1.04	0	0	0	0	0	0	0	0
	W	4A5-2ov	0.470	se	22.56	30.72	0	0	0	0	0	0	0	0
	W	13AA-0fc	0.304	se	14.59	5.50	0	0	0	0	0	0	0	0
	W	12C-0sw	0.091	sw	4.37	2.02	0	0	0	0	0	0	0	0
	W	4A5-2ov	0.470	sw	22.56	30.72	0	0	0	0	0	0	0	0
	D	11J0	0.600	sw	28.80	16.32	0	0	0	0	0	0	0	0
	W	12F-0sw	0.065	sw	3.12	1.04	0	0	0	0	0	0	0	0
	W	4A5-2ov	0.470	sw	22.56	30.72	0	0	0	0	0	0	0	0
	W	13AA-0fc	0.304	sw	14.59	5.50	0	0	0	0	0	0	0	0
	W	12C-0sw	0.091	nw	4.37	2.02	0	0	0	0	0	0	0	0
	W	4A5-2ov	0.470	nw	22.56	25.91	0	0	0	0	0	0	0	0
	W	12E-0sw	0.068	nw	3.26	1.23	0	0	0	0	0	0	0	0
	W	4A5-2ov	0.470	nw	22.56	25.91	0	0	0	0	0	0	0	0
	W	12F-0sw	0.065	nw	3.12	1.04	0	0	0	0	0	0	0	0
	W	4A5-2ov	0.470	nw	22.56	25.91	0	0	0	0	0	0	0	0
	W	13AA-0fc	0.304	nw	14.59	5.50	0	0	0	0	0	0	0	0
	C	16B-38ad	0.026	-	1.25	1.32	10	10	12	13	30	30	37	40
	F	22A-tpm	1.180	-	56.64	0.00	0	0	0	0	0	0	0	0
6	c) AED excursion													
	Envelope loss/gain								355	337			840	634
12	a) Infiltration								111	17			289	43
	b) Room ventilation								0	0			0	0
13	Internal gains: Occupants @ 230						0			0	1			230
	Appliances/other									0				0
	Subtotal (lines 6 to 13)								466	353			1128	908
	Less external load								0	0			0	0
	Less transfer								0	0			0	0
	Redistribution								0	0			3	3
14	Subtotal								466	353			1131	911
15	Duct loads						-0%	0%	0	0	-0%	0%	0	0
	Total room load								466	353			1131	911
	Air required (cfm)								19	22			47	56

Calculations approved by ACCA to meet all requirements of Manual J 8th Ed.



Right-J® Worksheet Entire House

Job: May 09, 2013
Date: May 09, 2013
By: Elysian Energy, LLC

1 Room name				Stairs				Laundry						
2 Exposed wall				0 ft				12.0 ft						
3 Room height				9.0 ft		heat/cool		9.0 ft		heat/cool				
4 Room dimensions				4.0 x 11.0 ft				6.0 x 6.0 ft						
5 Room area				44.0 ft²				36.0 ft²						
	Ty	Construction number	U-value (Btuh/ft²·°F)	Or	HTM (Btuh/ft²)		Area (ft²) or perimeter (ft)		Load (Btuh)		Area (ft²) or perimeter (ft)		Load (Btuh)	
					Heat	Cool	Gross	N/P/S	Heat	Cool	Gross	N/P/S	Heat	Cool
6	W	12C-0sw	0.091	ne	4.37	2.02	0	0	0	0	0	0	0	0
	W	4A5-2ov	0.470	ne	22.56	25.91	0	0	0	0	0	0	0	0
	W	12E-0sw	0.068	ne	3.26	1.23	0	0	0	0	54	46	150	57
	W	4A5-2ov	0.470	ne	22.56	25.91	0	0	0	0	8	0	180	207
11	D	11J0	0.600	ne	28.80	16.32	0	0	0	0	0	0	0	0
	W	12F-0sw	0.065	ne	3.12	1.04	0	0	0	0	0	0	0	0
	W	4A5-2ov	0.470	ne	22.56	25.91	0	0	0	0	0	0	0	0
	W	13AA-0fc	0.304	ne	14.59	5.50	0	0	0	0	0	0	0	0
	W	12C-0sw	0.091	se	4.37	2.02	0	0	0	0	0	0	0	0
	W	4A5-2ov	0.470	se	22.56	30.72	0	0	0	0	0	0	0	0
	W	12E-0sw	0.068	se	3.26	1.23	0	0	0	0	54	54	176	66
	W	12F-0sw	0.065	se	3.12	1.04	0	0	0	0	0	0	0	0
	W	4A5-2ov	0.470	se	22.56	30.72	0	0	0	0	0	0	0	0
	W	13AA-0fc	0.304	se	14.59	5.50	0	0	0	0	0	0	0	0
	W	12C-0sw	0.091	sw	4.37	2.02	0	0	0	0	0	0	0	0
	W	4A5-2ov	0.470	sw	22.56	30.72	0	0	0	0	0	0	0	0
	D	11J0	0.600	sw	28.80	16.32	0	0	0	0	0	0	0	0
	W	12F-0sw	0.065	sw	3.12	1.04	0	0	0	0	0	0	0	0
	W	4A5-2ov	0.470	sw	22.56	30.72	0	0	0	0	0	0	0	0
	W	13AA-0fc	0.304	sw	14.59	5.50	0	0	0	0	0	0	0	0
	W	12C-0sw	0.091	nw	4.37	2.02	0	0	0	0	0	0	0	0
	W	4A5-2ov	0.470	nw	22.56	25.91	0	0	0	0	0	0	0	0
	W	12E-0sw	0.068	nw	3.26	1.23	0	0	0	0	0	0	0	0
	W	4A5-2ov	0.470	nw	22.56	25.91	0	0	0	0	0	0	0	0
	W	12F-0sw	0.065	nw	3.12	1.04	0	0	0	0	0	0	0	0
	W	4A5-2ov	0.470	nw	22.56	25.91	0	0	0	0	0	0	0	0
	W	13AA-0fc	0.304	nw	14.59	5.50	0	0	0	0	0	0	0	0
	C	16B-38ad	0.026	-	1.25	1.32	8	8	10	11	36	36	45	47
	F	22A-tpm	1.180	-	56.64	0.00	0	0	0	0	0	0	0	0
6	c) AED excursion								-1				-58	
	Envelope loss/gain								10		10		552 320	
12	a) Infiltration								0		0		266 40	
	b) Room ventilation								0		0		0 0	
13	Internal gains:		Occupants @ 230		230		0		0		0		0 500	
	Subtotal (lines 6 to 13)								10		10		818 860	
	Less external load								0		0		0 0	
	Less transfer								0		0		0 0	
	Redistribution								-10		-10		1 1	
14	Subtotal								0		0		819 860	
15	Duct loads						-0%		0%		-0%		0% 0	
	Total room load								0		0		819 860	
	Air required (cfm)								0		0		34 53	

Calculations approved by ACCA to meet all requirements of Manual J 8th Ed.



Right-J® Worksheet

Entire House

Job:
 Date: May 09, 2013
 By: Elysian Energy, LLC

1 2 3 4 5	Room name				Kitchen				Closet 2					
	Exposed wall				27.0 ft				11.0 ft					
	Room height				9.0 ft				7.0 ft					
Room dimensions				1.0 x 136.0 ft				5.0 x 6.0 ft						
Room area				136.0 ft²				30.0 ft²						
	Ty	Construction number	U-value (Btuh/ft²·°F)	Or	HTM (Btuh/ft²)		Area (ft²) or perimeter (ft)		Load (Btuh)		Area (ft²) or perimeter (ft)		Load (Btuh)	
					Heat	Cool	Gross	N/P/S	Heat	Cool	Gross	N/P/S	Heat	Cool
6	W	12C-0sw	0.091	ne	4.37	2.02	0	0	0	0	0	0	0	0
	W	4A5-2ov	0.470	ne	22.56	25.91	0	0	0	0	0	0	0	0
	W	12E-0sw	0.068	ne	3.26	1.23	108	80	261	98	0	0	0	0
	W	4A5-2ov	0.470	ne	22.56	25.91	0	0	0	0	0	0	0	0
11	D	11J0	0.600	ne	28.80	16.32	28	28	806	457	0	0	0	0
	W	12F-0sw	0.065	ne	3.12	1.04	0	0	0	0	0	0	0	0
	W	4A5-2ov	0.470	ne	22.56	25.91	0	0	0	0	0	0	0	0
	W	13AA-0fc	0.304	ne	14.59	5.50	0	0	0	0	0	0	0	0
	W	12C-0sw	0.091	se	4.37	2.02	0	0	0	0	0	0	0	0
	W	4A5-2ov	0.470	se	22.56	30.72	0	0	0	0	0	0	0	0
	W	12E-0sw	0.068	se	3.26	1.23	0	0	0	0	0	0	0	0
	W	12F-0sw	0.065	se	3.12	1.04	0	0	0	0	42	42	131	44
	W	4A5-2ov	0.470	se	22.56	30.72	0	0	0	0	0	0	0	0
	W	13AA-0fc	0.304	se	14.59	5.50	0	0	0	0	0	0	0	0
	W	12C-0sw	0.091	sw	4.37	2.02	0	0	0	0	0	0	0	0
	W	4A5-2ov	0.470	sw	22.56	30.72	0	0	0	0	0	0	0	0
	D	11J0	0.600	sw	28.80	16.32	0	0	0	0	0	0	0	0
	W	12F-0sw	0.065	sw	3.12	1.04	0	0	0	0	35	35	109	36
	W	4A5-2ov	0.470	sw	22.56	30.72	0	0	0	0	0	0	0	0
	W	13AA-0fc	0.304	sw	14.59	5.50	0	0	0	0	0	0	0	0
	W	12C-0sw	0.091	nw	4.37	2.02	81	81	354	164	0	0	0	0
	W	4A5-2ov	0.470	nw	22.56	25.91	0	0	0	0	0	0	0	0
	W	12E-0sw	0.068	nw	3.26	1.23	54	46	150	57	0	0	0	0
	W	4A5-2ov	0.470	nw	22.56	25.91	8	0	180	207	0	0	0	0
	W	12F-0sw	0.065	nw	3.12	1.04	0	0	0	0	0	0	0	0
	W	4A5-2ov	0.470	nw	22.56	25.91	0	0	0	0	0	0	0	0
	W	13AA-0fc	0.304	nw	14.59	5.50	0	0	0	0	0	0	0	0
	C	16B-38ad	0.026	-	1.25	1.32	94	94	117	124	30	30	37	40
	F	22A-tpm	1.180	-	56.64	0.00	0	0	0	0	0	0	0	0
6	c) AED excursion													
	Envelope loss/gain								1869	1022			278	110
12	a) Infiltration								599	90			190	29
	b) Room ventilation								0	0			0	0
13	Internal gains: Occupants @ 230						0			0	0			0
	Appliances/other									1200				0
	Subtotal (lines 6 to 13)								2468	2312			468	139
	Less external load								0	0			0	0
	Less transfer								0	0			0	0
	Redistribution								5	5			0	0
14	Subtotal								2473	2317			468	139
15	Duct loads						-0%	0%	0	0	-0%	0%	0	0
	Total room load								2473	2317			468	139
	Air required (cfm)								104	142			20	8

Calculations approved by ACCA to meet all requirements of Manual J 8th Ed.



Right-J® Worksheet Entire House

Job: May 09, 2013
Date: May 09, 2013
By: Elysian Energy, LLC

1 2 3 4 5	Room name				Bathrm				Room20					
	Exposed wall				9.0 ft				7.0 ft					
	Room height				7.0 ft				7.0 ft					
Room dimensions				7.0 x 7.0 ft				7.0 x 5.0 ft						
Room area				49.0 ft²				35.0 ft²						
	Ty	Construction number	U-value (Btuh/ft²·°F)	Or	HTM (Btuh/ft²)		Area (ft²) or perimeter (ft)		Load (Btuh)		Area (ft²) or perimeter (ft)		Load (Btuh)	
					Heat	Cool	Gross	N/P/S	Heat	Cool	Gross	N/P/S	Heat	Cool
6	W	12C-0sw	0.091	ne	4.37	2.02	0	0	0	0	0	0	0	0
	G	4A5-2ov	0.470	ne	22.56	25.91	0	0	0	0	0	0	0	0
	W	12E-0sw	0.068	ne	3.26	1.23	0	0	0	0	0	0	0	0
	G	4A5-2ov	0.470	ne	22.56	25.91	0	0	0	0	0	0	0	0
11	D	11J0	0.600	ne	28.80	16.32	0	0	0	0	0	0	0	0
	W	12F-0sw	0.065	ne	3.12	1.04	0	0	0	0	14	14	44	15
	G	4A5-2ov	0.470	ne	22.56	25.91	0	0	0	0	0	0	0	0
	W	13AA-0fc	0.304	ne	14.59	5.50	0	0	0	0	0	0	0	0
	W	12C-0sw	0.091	se	4.37	2.02	0	0	0	0	0	0	0	0
	G	4A5-2ov	0.470	se	22.56	30.72	0	0	0	0	0	0	0	0
	W	12E-0sw	0.068	se	3.26	1.23	0	0	0	0	0	0	0	0
	W	12F-0sw	0.065	se	3.12	1.04	49	41	128	43	35	27	84	28
	G	4A5-2ov	0.470	se	22.56	30.72	8	0	180	246	8	0	180	246
	W	13AA-0fc	0.304	se	14.59	5.50	0	0	0	0	0	0	0	0
	W	12C-0sw	0.091	sw	4.37	2.02	0	0	0	0	0	0	0	0
	G	4A5-2ov	0.470	sw	22.56	30.72	0	0	0	0	0	0	0	0
	D	11J0	0.600	sw	28.80	16.32	0	0	0	0	0	0	0	0
	W	12F-0sw	0.065	sw	3.12	1.04	14	14	44	15	0	0	0	0
	G	4A5-2ov	0.470	sw	22.56	30.72	0	0	0	0	0	0	0	0
	W	13AA-0fc	0.304	sw	14.59	5.50	0	0	0	0	0	0	0	0
	W	12C-0sw	0.091	nw	4.37	2.02	0	0	0	0	0	0	0	0
	G	4A5-2ov	0.470	nw	22.56	25.91	0	0	0	0	0	0	0	0
	W	12E-0sw	0.068	nw	3.26	1.23	0	0	0	0	0	0	0	0
	G	4A5-2ov	0.470	nw	22.56	25.91	0	0	0	0	0	0	0	0
	W	12F-0sw	0.065	nw	3.12	1.04	0	0	0	0	0	0	0	0
	G	4A5-2ov	0.470	nw	22.56	25.91	0	0	0	0	0	0	0	0
	W	13AA-0fc	0.304	nw	14.59	5.50	0	0	0	0	0	0	0	0
	C	16B-38ad	0.026	-	1.25	1.32	49	49	61	65	35	35	44	46
	F	22A-tpm	1.180	-	56.64	0.00	0	0	0	0	0	0	0	0
6	c) AED excursion								0				3	
	Envelope loss/gain								413	368			352	337
12	a) Infiltration								155	23			121	18
	b) Room ventilation								0	0			0	0
13	Internal gains: Occupants @ 230						0		0	0			0	0
	Appliances/other								0	0			0	0
	Subtotal (lines 6 to 13)								569	391			473	355
	Less external load								0	0			0	0
	Less transfer								0	0			0	0
	Redistribution								0	0			0	0
14	Subtotal								569	391			473	355
15	Duct loads						-0%	0%	0	0	-0%	0%	0	0
	Total room load								569	391			473	355
	Air required (cfm)								24	24			20	22

Calculations approved by ACCA to meet all requirements of Manual J 8th Ed.



Right-J® Worksheet

Entire House

Job:
 Date: May 09, 2013
 By: Elysian Energy, LLC

1 2 3 4 5	Room name				Mech rm				Strs					
	Exposed wall				12.0 ft				3.0 ft					
	Room height				7.0 ft				7.0 ft					
Room dimensions				6.0 x 6.0 ft				3.0 x 6.0 ft						
Room area				36.0 ft²				18.0 ft²						
	Ty	Construction number	U-value (Btuh/ft²·°F)	Or	HTM (Btuh/ft²)		Area (ft²) or perimeter (ft)		Load (Btuh)		Area (ft²) or perimeter (ft)		Load (Btuh)	
					Heat	Cool	Gross	N/P/S	Heat	Cool	Gross	N/P/S	Heat	Cool
6	W	12C-0sw	0.091	ne	4.37	2.02	0	0	0	0	0	0	0	0
	└G	4A5-2ov	0.470	ne	22.56	25.91	0	0	0	0	0	0	0	0
	W	12E-0sw	0.068	ne	3.26	1.23	0	0	0	0	0	0	0	0
	└G	4A5-2ov	0.470	ne	22.56	25.91	0	0	0	0	0	0	0	0
11	└D	11J0	0.600	ne	28.80	16.32	0	0	0	0	0	0	0	0
	W	12F-0sw	0.065	ne	3.12	1.04	42	42	131	44	21	21	66	22
	└G	4A5-2ov	0.470	ne	22.56	25.91	0	0	0	0	0	0	0	0
	W	13AA-0fc	0.304	ne	14.59	5.50	0	0	0	0	0	0	0	0
	└G	4A5-2ov	0.470	se	22.56	30.72	0	0	0	0	0	0	0	0
	W	12E-0sw	0.068	se	3.26	1.23	0	0	0	0	0	0	0	0
	└G	4A5-2ov	0.470	se	22.56	30.72	42	42	131	44	0	0	0	0
	W	13AA-0fc	0.304	se	14.59	5.50	0	0	0	0	0	0	0	0
	└G	4A5-2ov	0.470	sw	22.56	30.72	0	0	0	0	0	0	0	0
	└D	11J0	0.600	sw	28.80	16.32	0	0	0	0	0	0	0	0
	W	12F-0sw	0.065	sw	3.12	1.04	0	0	0	0	0	0	0	0
	└G	4A5-2ov	0.470	sw	22.56	30.72	0	0	0	0	0	0	0	0
	W	13AA-0fc	0.304	sw	14.59	5.50	0	0	0	0	0	0	0	0
	└G	4A5-2ov	0.470	nw	22.56	25.91	0	0	0	0	0	0	0	0
	W	12E-0sw	0.068	nw	3.26	1.23	0	0	0	0	0	0	0	0
	└G	4A5-2ov	0.470	nw	22.56	25.91	0	0	0	0	0	0	0	0
	W	12F-0sw	0.065	nw	3.12	1.04	0	0	0	0	0	0	0	0
	└G	4A5-2ov	0.470	nw	22.56	25.91	0	0	0	0	0	0	0	0
	W	13AA-0fc	0.304	nw	14.59	5.50	0	0	0	0	0	0	0	0
	C	16B-38ad	0.026	-	1.25	1.32	36	36	45	47	18	18	22	24
	F	22A-tpm	1.180	-	56.64	0.00	0	0	0	0	0	0	0	0
6	c) AED excursion													
	Envelope loss/gain								307	124			88	42
12	a) Infiltration								207	31			52	8
	b) Room ventilation								0	0			0	0
13	Internal gains: Occupants @ 230						0		0	0			0	0
	Appliances/other								0	0			0	0
	Subtotal (lines 6 to 13)								514	155			140	50
	Less external load								0	0			0	0
	Less transfer								0	0			0	0
	Redistribution								56	20			-140	-50
14	Subtotal								570	175			0	0
15	Duct loads						-0%	0%	0	0	-0%	0%	0	0
	Total room load								570	175			0	0
	Air required (cfm)								24	11			0	0

Calculations approved by ACCA to meet all requirements of Manual J 8th Ed.



Right-J® Worksheet Entire House

Job:
Date: May 09, 2013
By: Elysian Energy, LLC

1	Room name				Closet1				Suite					
	Exposed wall				11.0 ft				31.0 ft					
	Room height				7.0 ft				7.0 ft					
2	Room dimensions				5.0 x 6.0 ft				1.0 x 186.0 ft					
3	Room area				30.0 ft²				186.0 ft²					
4	Ty	Construction number	U-value (Btuh/ft²·°F)	Or	HTM (Btuh/ft²)		Area (ft²) or perimeter (ft)		Load (Btuh)		Area (ft²) or perimeter (ft)		Load (Btuh)	
					Heat	Cool	Gross	N/P/S	Heat	Cool	Gross	N/P/S	Heat	Cool
6	W	12C-0sw	0.091	ne	4.37	2.02	0	0	0	0	0	0	0	0
	W	4A5-2ov	0.470	ne	22.56	25.91	0	0	0	0	0	0	0	0
	W	12E-0sw	0.068	ne	3.26	1.23	0	0	0	0	0	0	0	0
	W	4A5-2ov	0.470	ne	22.56	25.91	0	0	0	0	0	0	0	0
11	D	11J0	0.600	ne	28.80	16.32	0	0	0	0	0	0	0	0
	W	12F-0sw	0.065	ne	3.12	1.04	35	23	72	24	14	14	44	15
	W	4A5-2ov	0.470	ne	22.56	25.91	12	0	271	311	0	0	0	0
	W	13AA-0fc	0.304	ne	14.59	5.50	0	0	0	0	0	0	0	0
	W	12C-0sw	0.091	se	4.37	2.02	0	0	0	0	0	0	0	0
	W	4A5-2ov	0.470	se	22.56	30.72	0	0	0	0	0	0	0	0
	W	12E-0sw	0.068	se	3.26	1.23	0	0	0	0	0	0	0	0
	W	12F-0sw	0.065	se	3.12	1.04	0	0	0	0	0	0	0	0
	W	4A5-2ov	0.470	se	22.56	30.72	0	0	0	0	0	0	0	0
	W	13AA-0fc	0.304	se	14.59	5.50	0	0	0	0	0	0	0	0
	W	12C-0sw	0.091	sw	4.37	2.02	0	0	0	0	0	0	0	0
	W	4A5-2ov	0.470	sw	22.56	30.72	0	0	0	0	0	0	0	0
	D	11J0	0.600	sw	28.80	16.32	0	0	0	0	0	0	0	0
	W	12F-0sw	0.065	sw	3.12	1.04	0	0	0	0	77	69	215	72
	W	4A5-2ov	0.470	sw	22.56	30.72	0	0	0	0	8	0	180	246
	W	13AA-0fc	0.304	sw	14.59	5.50	0	0	0	0	0	0	0	0
	W	12C-0sw	0.091	nw	4.37	2.02	0	0	0	0	0	0	0	0
	W	4A5-2ov	0.470	nw	22.56	25.91	0	0	0	0	0	0	0	0
	W	12E-0sw	0.068	nw	3.26	1.23	0	0	0	0	0	0	0	0
	W	4A5-2ov	0.470	nw	22.56	25.91	0	0	0	0	0	0	0	0
	W	12F-0sw	0.065	nw	3.12	1.04	42	42	131	44	126	110	343	114
	W	4A5-2ov	0.470	nw	22.56	25.91	0	0	0	0	16	0	361	415
	W	13AA-0fc	0.304	nw	14.59	5.50	0	0	0	0	0	0	0	0
	C	16B-38ad	0.026	-	1.25	1.32	30	30	37	40	186	186	232	245
	F	22A-tpm	1.180	-	56.64	0.00	0	0	0	0	0	0	0	0
6	c) AED excursion													149
	Envelope loss/gain								511	391			1376	1255
12	a) Infiltration								190	29			535	81
	b) Room ventilation								0	0			0	0
13	Internal gains: Occupants @ 230						0			0	0			0
	Appliances/other									0				0
	Subtotal (lines 6 to 13)								701	420			1911	1335
	Less external load								0	0			0	0
	Less transfer								0	0			0	0
	Redistribution								56	20			28	10
14	Subtotal								757	440			1939	1345
15	Duct loads						-0%	0%	0	0	-0%	0%	0	0
	Total room load								757	440			1939	1345
	Air required (cfm)								32	27			81	82

Calculations approved by ACCA to meet all requirements of Manual J 8th Ed.

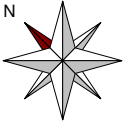


Right-J® Worksheet Entire House

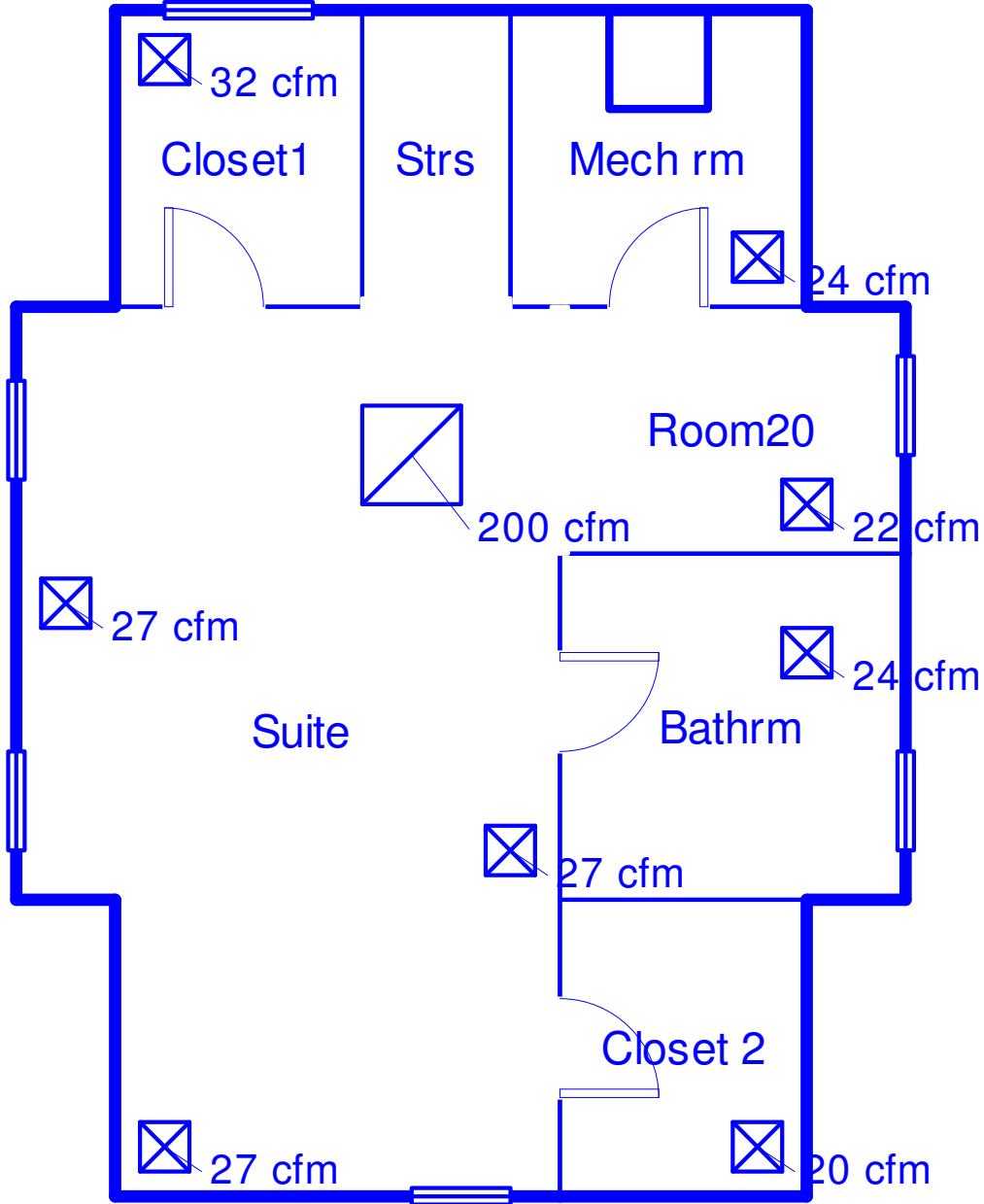
Job:
Date: May 09, 2013
By: Elysian Energy, LLC

1 Room name		Crawlspace														
2 Exposed wall		104.0 ft														
3 Room height		2.5 ft										heat/cool				
4 Room dimensions		636.0 ft ² 1.0 x 636.0 ft														
5 Room area																
	Ty	Construction number	U-value (Btuh/ft ² ·°F)	Or	HTM (Btuh/ft ²)		Area (ft ²) or perimeter (ft)		Load (Btuh)		Area or perimeter		Load			
					Heat	Cool	Gross	N/P/S	Heat	Cool	Gross	N/P/S	Heat	Cool		
6	W	12C-0sw	0.091	ne	4.37	2.02	0	0	0	0						
	└─G	4A5-2ov	0.470	ne	22.56	25.91	0	0	0	0						
	W	12E-0sw	0.068	ne	3.26	1.23	0	0	0	0						
	└─G	4A5-2ov	0.470	ne	22.56	25.91	0	0	0	0						
11	└─D	11J0	0.600	ne	28.80	16.32	0	0	0	0						
	W	12F-0sw	0.065	ne	3.12	1.04	0	0	0	0						
	└─G	4A5-2ov	0.470	ne	22.56	25.91	0	0	0	0						
	W	13AA-0fc	0.304	ne	14.59	5.50	55	55	803	303						
	└─G	4A5-2ov	0.470	se	22.56	30.72	0	0	0	0						
	W	12E-0sw	0.068	se	3.26	1.23	0	0	0	0						
	└─G	4A5-2ov	0.470	se	22.56	30.72	0	0	0	0						
	W	13AA-0fc	0.304	se	14.59	5.50	75	75	1094	413						
	└─G	4A5-2ov	0.470	sw	22.56	30.72	0	0	0	0						
	└─D	11J0	0.600	sw	28.80	16.32	0	0	0	0						
	W	12F-0sw	0.065	sw	3.12	1.04	0	0	0	0						
	└─G	4A5-2ov	0.470	sw	22.56	30.72	0	0	0	0						
	W	13AA-0fc	0.304	sw	14.59	5.50	55	55	803	303						
	└─G	4A5-2ov	0.470	nw	22.56	25.91	0	0	0	0						
	W	12E-0sw	0.068	nw	3.26	1.23	0	0	0	0						
	└─G	4A5-2ov	0.470	nw	22.56	25.91	0	0	0	0						
	W	12F-0sw	0.065	nw	3.12	1.04	0	0	0	0						
	└─G	4A5-2ov	0.470	nw	22.56	25.91	0	0	0	0						
	W	13AA-0fc	0.304	nw	14.59	5.50	75	75	1094	413						
	C	16B-38ad	0.026	-	1.25	1.32	0	0	0	0						
	F	22A-tpm	1.180	-	56.64	0.00	108	18	1000	0						
6	c) AED excursion															
	Envelope loss/gain												4794	1331		
12	a) Infiltration												641	97		
	b) Room ventilation												0	0		
13	Internal gains:		Occupants @	230			0			0			0			
			Appliances/other							0			0			
	Subtotal (lines 6 to 13)												5435	1428		
	Less external load												0	0		
	Less transfer												0	0		
	Redistribution												0	0		
14	Subtotal												5435	1428		
15	Duct loads										-0%	0%	0	0		
	Total room load												5435	1428		
	Air required (cfm)												227	87		

Calculations approved by ACCA to meet all requirements of Manual J 8th Ed.

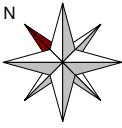


Finished Attic

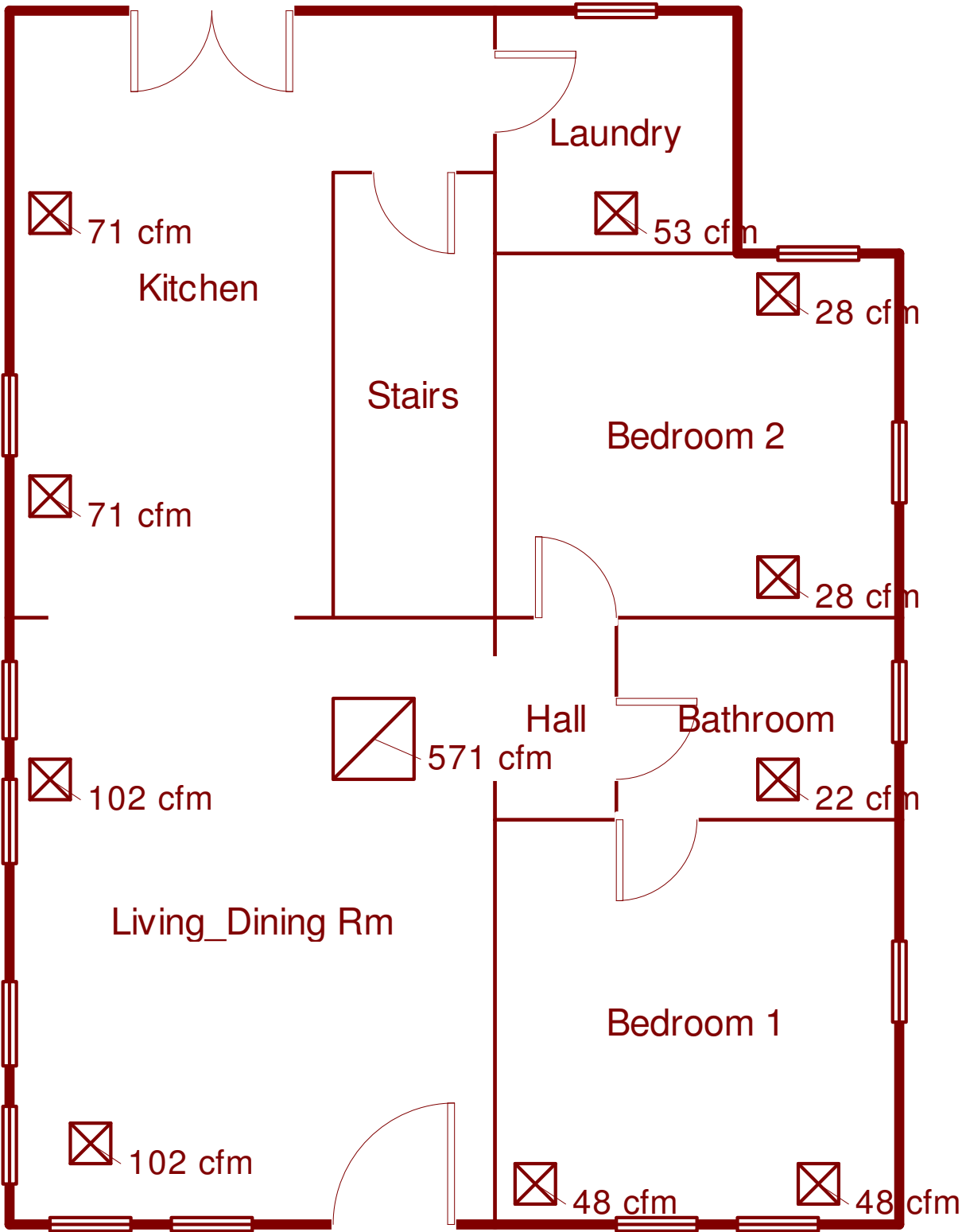


Job #:
Performed by Elysian Energy, LLC for:
Redevelopment Authority of Prince George's County
3413 Glen Dr,
Suitland, MD 20746

Scale: 1 : 45
Page 1
Right-Suite@ Universal 2012
12.1.07 RSU09838
2013-May-14 17:53:34
...fHome\Desktop\Glenn Drive 2.rup

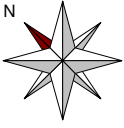


1st Floor



Job #:
Performed by Elysian Energy, LLC for:
Redevelopment Authority of Prince George's County
3413 Glen Dr,
Suitland, MD 20746

Scale: 1 : 45
Page 2
Right-Suite® Universal 2012
12.1.07 RSU09838
2013-May-14 17:53:34
...fHome\Desktop\Glenn Drive 2.rup



Crawlspace

 114 cfm

 114 cfm

Crawlspace

 227 cfm

Job #:
Performed by Elysian Energy, LLC for:
Redevelopment Authority of Prince George's County
3413 Glen Dr,
Suitland, MD 20746

Scale: 1 : 45
Page 3
Right-Suite® Universal 2012
12.1.07 RSU09838
2013-May-14 17:53:35
...fHome\Desktop\Glenn Drive 2.rup



Duct System Summary

Entire House

Job:
Date: May 09, 2013
By: Elysian Energy, LLC

Project Information

For: Redevelopment Authority of Prince George's County
3413 Glen Dr., Suitland, MD 20746

	Heating	Cooling
External static pressure	0 in H2O	0 in H2O
Pressure losses	0 in H2O	0 in H2O
Available static pressure	0 in H2O	0 in H2O
Supply / return available pressure	0.00 / 0.00 in H2O	0.00 / 0.00 in H2O
Lowest friction rate	0 in/100ft	0 in/100ft
Actual air flow	833 cfm	833 cfm
Total effective length (TEL)		0 ft

Supply Branch Detail Table

Name	Design (Btuh)	Htg (cfm)	Clg (cfm)	Design FR	Diam (in)	H x W (in)	Duct Matl	Actual Ln (ft)	Ftg.Eqv Ln (ft)	Trunk
Bathrm	c	391	24	24	0	0	0x0	ShMt	0	0
Bathroom	c	353	19	22	0	0	0x0	ShMt	0	0
Bedroom 1	c	785	36	48	0	0	0x0	ShMt	0	0
Bedroom 1-A	c	785	36	48	0	0	0x0	ShMt	0	0
Bedroom 2	c	455	24	28	0	0	0x0	ShMt	0	0
Bedroom 2-A	c	455	24	28	0	0	0x0	ShMt	0	0
Closet 2	h	139	20	8	0	0	0x0	ShMt	0	0
Closet 1	h	440	32	27	0	0	0x0	ShMt	0	0
Crawlspace	h	714	114	44	0	0	0x0	ShMt	0	0
Crawlspace-A	h	714	114	44	0	0	0x0	ShMt	0	0
Kitchen	c	1159	52	71	0	0	0x0	ShMt	0	0
Kitchen-A	c	1159	52	71	0	0	0x0	ShMt	0	0
Laundry	c	860	34	53	0	0	0x0	ShMt	0	0
Living_Dining Rm	c	1657	65	102	0	0	0x0	ShMt	0	0
Living_Dining Rm-A	c	1657	65	102	0	0	0x0	ShMt	0	0
Mech rm	h	175	24	11	0	0	0x0	ShMt	0	0
Room 20	c	355	20	22	0	0	0x0	ShMt	0	0
Suite	c	448	27	27	0	0	0x0	ShMt	0	0
Suite-A	c	448	27	27	0	0	0x0	ShMt	0	0
Suite-B	c	448	27	27	0	0	0x0	ShMt	0	0

Return Branch Detail Table

Name	Grill Size (in)	Htg (cfm)	Clg (cfm)	TEL (ft)	Design FR	Veloc (fpm)	Diam (in)	H x W (in)	Stud/Joist Opening (in)	Duct Matl	Trunk
rb2	0x0	406	571	0	0	0	0	0x 0		ShMt	
rb4	0x0	227	87	0	0	0	0	0x 0		ShMt	
rb1	0x0	200	174	0	0	0	0	0x 0		ShMt	