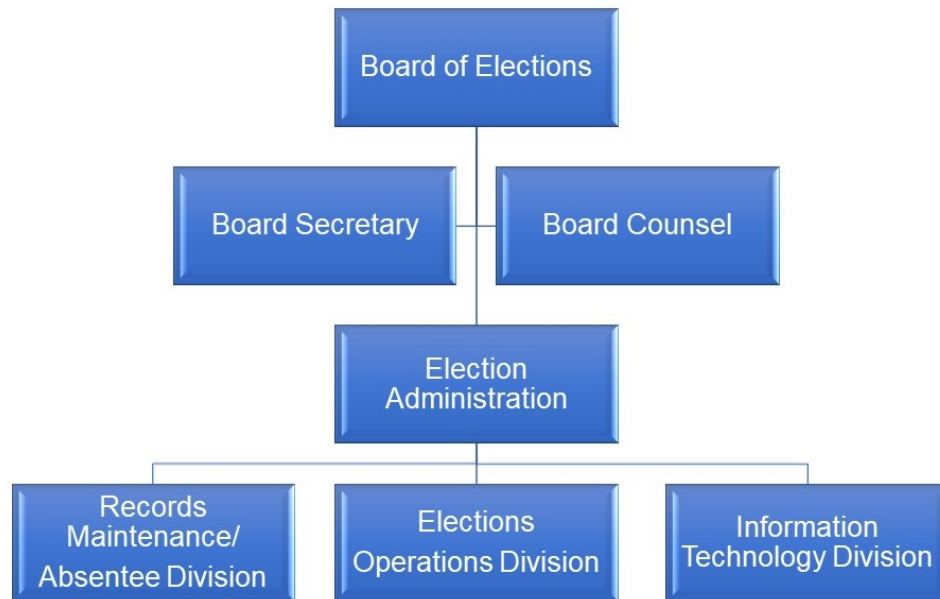


# Board of Elections



## MISSION AND SERVICES

The Board of Elections provides election services to County citizens in order to ensure registered voters are able to vote in accordance with federal, State and County election laws.

### CORE SERVICES

- Poll site identification and operational management (during the early voting period and on Election Days)
- Voting equipment maintenance
- Voter registration, records management, informational updates, and processing petitions
- Candidate filing
- Community outreach
- Redistricting

### FY 2021 KEY ACCOMPLISHMENTS

- Conducted a successful 2020 General Election during the pandemic, this included vote by mail and in-person voting centers.
- Successfully implemented a vote by mail Election where staff processed nearly 270,000 vote by mail ballot applications and processed nearly 240,000 vote by mail ballots. Approximately 40% of the voters of Prince George's County voted by mail during the 2020 Presidential General Election.
- Implemented same-day registration for voters on Election Day.
- Received a \$1.3 million grant award from the Center for Tech and Civic Life to assist with the costs of running an election during the pandemic.

## STRATEGIC FOCUS AND INITIATIVES FOR FY 2022

The board's top priorities in FY 2022 are:

- Increase the percentage of Prince George's County residents registered to vote in all Election cycles.
- Preparation for and implementation of the 2022 Gubernatorial Primary Election.
- Reduce the number of duplicate voters registered in various states utilizing the Electronic Registration Information Center (ERIC).
- Recruit and train Election Judges.
- Plan for Redistricting.

## FY 2022 BUDGET SUMMARY

The FY 2022 approved budget for the Board of Elections is \$6,169,500, a decrease of \$425,100 or -6.4% under the FY 2021 approved budget.

### Expenditures by Fund Type

Fund Types	FY 2020 Actual		FY 2021 Budget		FY 2021 Estimate		FY 2022 Approved	
	Amount	% Total	Amount	% Total	Amount	% Total	Amount	% Total
General Fund	\$3,812,258	100.0%	\$6,594,600	100.0%	\$6,040,700	82.0%	\$6,169,500	100.0%
Grant Funds	—	0.0%	—	0.0%	1,325,400	18.0%	—	0.0%
<b>Total</b>	<b>\$3,812,258</b>	<b>100.0%</b>	<b>\$6,594,600</b>	<b>100.0%</b>	<b>\$7,366,100</b>	<b>100.0%</b>	<b>\$6,169,500</b>	<b>100.0%</b>

### Reconciliation from Prior Year

	Expenditures
<b>FY 2021 Approved Budget</b>	<b>\$6,594,600</b>
<b>Add: Compensation - New Positions</b> — Increase in compensation due to the conversion 13 personal service contracts to nine general clerk and four data coordinator full time positions	\$537,900
<b>Add: Compensation</b> — Adding an additional 102 election technicians and 1,000 election judges to restore staffing levels to support the 2021 Gubernatorial primary election	240,800
<b>Increase Cost: Operating</b> — Increase in anticipated expenses for data/voice services	15,000
<b>Increase Cost: Fringe Benefits</b> — Increase in the fringe benefit rate from 13.5% to 15.2% to align with anticipated costs	14,300
<b>Decrease Cost: Operating - Technology Allocation</b> — Decrease in the technology allocation charge to support anticipated countywide costs for technology	(43,200)
<b>Decrease Cost: Compensation</b> — Reduction in other compensation, the conversion of personal service contracts and a reduction in overtime expenses	(1,189,900)
<b>FY 2022 Approved Budget</b>	<b>\$6,169,500</b>

## STAFF AND BUDGET RESOURCES

Authorized Positions	FY 2020 Budget	FY 2021 Budget	FY 2022 Approved	Change FY21-FY22
<b>General Fund</b>				
Full Time - Civilian	18	18	31	13
Full Time - Sworn	0	0	0	0
Subtotal - FT	18	18	31	13
Part Time	0	0	0	0
Limited Term	0	0	0	0
<b>TOTAL</b>				
Full Time - Civilian	18	18	31	13
Full Time - Sworn	0	0	0	0
Subtotal - FT	18	18	31	13
Part Time	0	0	0	0
Limited Term	0	0	0	0

Positions By Classification	FY 2022		
	Full Time	Part Time	Limited Term
Administrative Aide	3	0	0
Administrative Assistant	1	0	0
Administrative Specialist	1	0	0
Citizen Service Specialist	2	0	0
Data Coordinator	7	0	0
Election Administrator	1	0	0
General Clerk	13	0	0
Supervisory Clerk	1	0	0
Systems Analyst	2	0	0
<b>TOTAL</b>	<b>31</b>	<b>0</b>	<b>0</b>

**Expenditures by Category - General Fund**

Category	FY 2020 Actual	FY 2021 Budget	FY 2021 Estimate	FY 2022 Approved	Change FY21-FY22	
					Amount (\$)	Percent (%)
Compensation	\$2,637,881	\$4,513,400	\$4,113,400	\$4,102,200	\$(411,200)	-9.1%
Fringe Benefits	531,378	609,200	555,300	623,500	14,300	2.3%
Operating	642,999	1,472,000	1,372,000	1,443,800	(28,200)	-1.9%
Capital Outlay	—	—	—	—	—	
<b>SubTotal</b>	<b>\$3,812,258</b>	<b>\$6,594,600</b>	<b>\$6,040,700</b>	<b>\$6,169,500</b>	<b>\$(425,100)</b>	<b>-6.4%</b>
Recoveries	—	—	—	—	—	
<b>Total</b>	<b>\$3,812,258</b>	<b>\$6,594,600</b>	<b>\$6,040,700</b>	<b>\$6,169,500</b>	<b>\$(425,100)</b>	<b>-6.4%</b>

In FY 2022, compensation expenditures decrease 9.1% under the FY 2021 budget due to mandated salary requirements including anticipated changes in the temporary/seasonal staffing complement offset by 13 personal service contracts being converted to full time positions. Compensation costs include funding for 31 full time employees, which includes 13 new positions. Funding is also provided for 3,000 election judges, 494 chief judges and 760 other temporary staff. Fringe benefit expenditures increase 2.3% over the FY 2021 budget due to the increase of the fringe benefit rate from 13.5% to 15.2% to support projected costs.

Operating expenditures decrease 1.9% under the FY 2021 budget primarily driven by a decrease in the technology cost allocation, offset by an increase in anticipated data/voice expenses.

## GRANT FUNDS SUMMARY

### Expenditures by Category - Grant Funds

Category	FY 2020 Actual	FY 2021 Budget	FY 2021 Estimate	FY 2022 Approved	Change FY21-FY22	
					Amount (\$)	Percent (%)
Compensation	\$—	\$—	\$1,000,000	\$—	\$—	
Fringe Benefits	—	—	—	—	—	
Operating	—	—	325,400	—	—	
Capital Outlay	—	—	—	—	—	
<b>SubTotal</b>	<b>\$—</b>	<b>\$—</b>	<b>\$1,325,400</b>	<b>\$—</b>	<b>\$—</b>	
Recoveries	—	—	—	—	—	
<b>Total</b>	<b>\$—</b>	<b>\$—</b>	<b>\$1,325,400</b>	<b>\$—</b>	<b>\$—</b>	

The FY 2022 approved grant budget for the Board of Elections is \$0. The Covid-19 Response Grant was awarded in FY 2021 to help ensure a safe, and efficient Election Day during the Covid-19 pandemic.

## Grant Funds by Division

Grant Name	FY 2020 Actual	FY 2021 Budget	FY 2021 Estimate	FY 2022 Approved	Change FY21-FY22	
					Amount (\$)	Percent (%)
Board of Elections						
Covid-19 Response Grant	\$—	\$—	\$1,325,400	\$—	\$—	
Total Board of Elections	\$—	\$—	\$1,325,400	\$—	\$—	
Subtotal	\$—	\$—	\$1,325,400	\$—	\$—	
Total Transfer from General Fund - (County Contribution/Cash Match)	—	—	—	—	—	
Total	\$—	\$—	\$1,325,400	\$—	\$—	

## SERVICE DELIVERY PLAN AND PERFORMANCE

**Goal 1** — To provide election services to citizens to ensure all eligible citizens have an opportunity to vote in a primary or general election.

**Objective 1.1** — Increase the percentage of County residents that are registered to vote.

FY 2026 Target	FY 2019 Actual	FY 2020 Actual	FY 2021 Estimated	FY 2022 Projected	Trend
99%	90%	92%	93%	94%	↔

### Trend and Analysis

Same-day voter registration was implemented during the 2016 Presidential Elections for early voting and during the 2020 Presidential Elections for Election Day. Citizens of Maryland had an opportunity to register to vote if they met specified criteria - possessed a valid Maryland driver's license or MVA issued identification card during early voting. As a result of the availability of same-day registration during the 2020 General Election, nearly 5,000 Prince Georgians registered to vote or changed their address (2,183 Prince Georgians were able to register and vote on Election Day and 2,266 registered during the early voting period). With the invention of online voter registration and the offering of same-day voter registration during early voting, citizens now have increased opportunities to participate in the Election process. As of November 30, 2020, there are 639,825 registered voters in Prince George's County. The availability of same-day voter registration on Election Day increased citizens' opportunity to participate in the Elections.

During the 2020 Election cycle, the Board used various avenues to reach voters and inform them of the changes to the Election process as a result of the pandemic. The Board saw a significant uptick in website visits and will continue to utilize social media and digital media as a means of providing information to the public.

### Performance Measures

Measure Name	FY 2018 Actual	FY 2019 Actual	FY 2020 Actual	FY 2021 Estimated	FY 2022 Projected
<b>Resources (Input)</b>					
Staff dedicated to outreach activities	3	5	25	10	15
<b>Workload, Demand and Production (Output)</b>					
Newspaper advertisements published	1	0	0	1	2
Website visits	68,556	70,563	71,477	160,000	175,000
Outreach events attended	30	33	56	75	50
Registered voters	527,531	618,680	630,749	640,000	650,000
County population 18 years or older	683,764	685,139	686,495	689,360	690,738
<b>Efficiency</b>					
Outreach events attended per staff dedicated to outreach activities	10.0	6.0	2.0	7.0	3.0
<b>Impact (Outcome)</b>					
Voters registered to vote in all Election cycles	77%	90%	92%	93%	94%

**Objective 1.2** — Maintain average wait time for voters on Election Day and during early voting at less than 15 minutes.

FY 2026 Target	FY 2019 Actual	FY 2020 Actual	FY 2021 Estimated	FY 2022 Projected	Trend
0:00	3:00	0:00	0:00	0:00	↔

### Trend and Analysis

Prince Georgians were encouraged to vote by mail during the 2020 Presidential Election cycle due to the coronavirus pandemic. Approximately 40% of voters (nearly 240,000) submitted their ballots by mail. As a result, voters did not have to wait in long lines to cast their ballot if they opted to do so in person. Many of the voters who voted by mail, opted to use one of the 42 convenient drop boxes located at each vote center and the Board of Elections Office, instead of using the postal service.

### Performance Measures

Measure Name	FY 2018 Actual	FY 2019 Actual	FY 2020 Actual	FY 2021 Estimated	FY 2022 Projected
<b>Resources (Input)</b>					
Voting units	461	537	24	450	662
Polling places	283	285	4	41	245
Election judges recruited and trained	6,320	n/a	3,300	2,200	3,500
<b>Workload, Demand and Production (Output)</b>					
Voters during Primary Election	527,531	n/a	240,412	n/a	350,000
Voters during General Election	n/a	n/a	n/a	427,166	n/a
Votes cast during early voting: Primary Election	41,101	n/a	n/a	n/a	130,000
Votes cast during early voting: General Election	41,101	n/a	n/a	128,831	n/a
<b>Efficiency</b>					
Election judges per polling place	22.0	14.0	40.0	50.0	20.0
<b>Impact (Outcome)</b>					
Average waiting time for voters to vote by voting machine during each Election (minutes)	n/a	3:00	n/a	n/a	n/a
Wait time during the Presidential General Election (average)	n/a	n/a	n/a	0:00	n/a
Wait time during the Gubernatorial Primary (average)	n/a	n/a	n/a	n/a	0:00
Wait time during the Gubernatorial General Election (average)	0:00	3:00	n/a	n/a	n/a
Wait time during the Presidential Primary Election (average)	n/a	n/a	5:00	n/a	n/a