



# CREATING PEDESTRIAN SAFETY SYNERGY: INTEGRATING & IMPLEMENTING THE *E* OF *ENGINEERING* IN PRINCE GEORGE'S COUNTY

APRIL 2021



# WHY VISION ZERO?

- There are 6 E's – supports a synergistic approach to tackle the problem that is getting worse, not better
- The County has three distinct typographies: Urban, Suburban and Rural
- The pedestrian safety challenges compound when meshing a suburban section (large arterials) with emerging Transit Oriented Developments/Activity Centers
- Prince George's County
  - Most populous
  - Roadway network 2,000 miles
  - Highest number of people killed who were walking in MD



# EXPANDED TOOL BOX TO SUPPORT VISION ZERO & REDESIGNING ARTERIAL ROADWAYS

- Existing/Traditional Approach
  - Rumble Strips/Psycho Perceptive Markings
  - Designated School Zones
  - Lane Narrowing (Bike/Parking Lanes)
  - Additional Enforcement
  - Speed Trailer
  - Oversized/Improved Signage
  - Speed Humps (NTMP)
- Proposed Additional Measures
  - Curb extensions
  - Medians
  - Protected Intersections
  - Urban/Small Traffic Circles
  - Road Diet
  - RRFB
  - Yard Signs

# PROCESS



\*Engineering judgement will always be imperative in the final decision.

# RRFB INSTALLATION FLOW CHART



## CONSIDERATIONS

- Roadway classification
- Controlled vs uncontrolled
- Prevailing speed
- Existing traffic controls
- Pedestrian volumes
- Proximity of nearest signal
- Presence of existing crossing
- Mid-block vs at intersection
- Pedestrian crashes
- Adjacent land uses
- Visibility
- # of gaps for crossing
- Crossing distance
- Median presence

# TEST CASE: LOTTSFORD ROAD AT APOLLO DRIVE

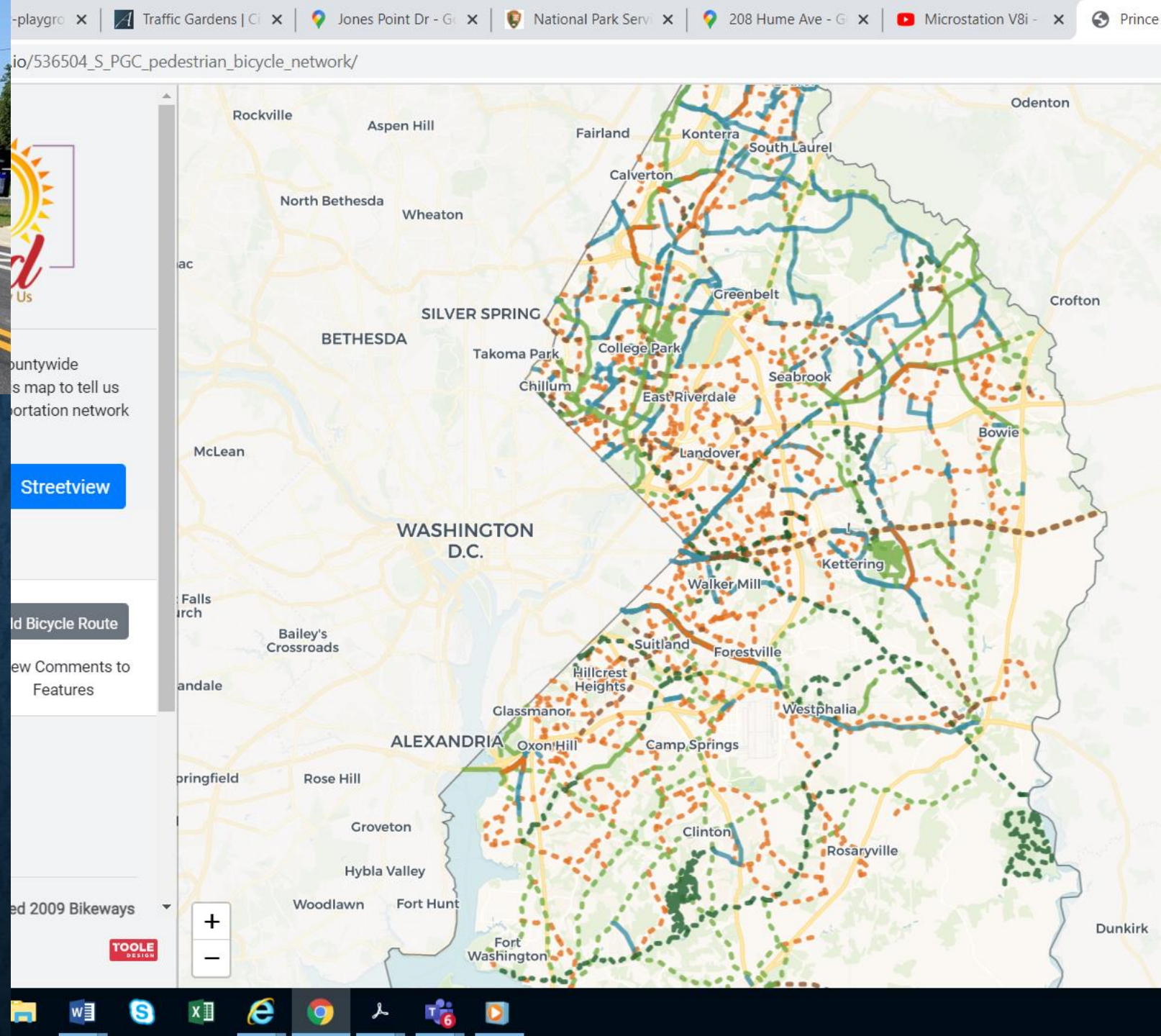


# **REPURPOSING LANE CONFIGURATION TO REDUCE SPEED AND FACILITATE BIKE MOVEMENTS**

- **Bike Lanes**
- **Green Paint at Crossings**
- **Shoulder Stripes**
- **Reduction of the Number of Lanes**
- **Urban Traffic Circles**

# 5-YEAR BIKE AND PEDESTRIAN NETWORK PLAN

- We received ~1200 comments  
(as of February 22, 2021)
- The recommended networks will be vetted through the Project Prioritization Matrix
- Factors Included under the Matrix
- Completed by June 2021





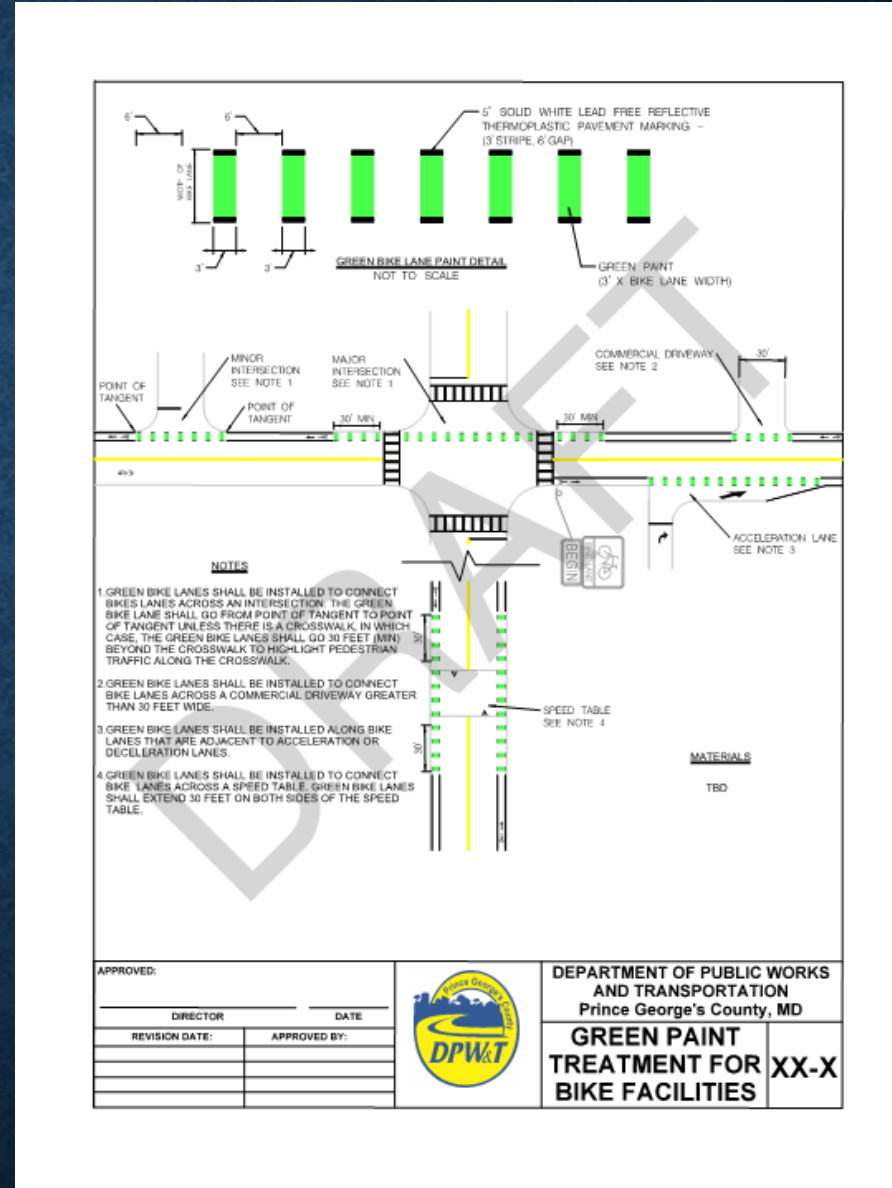
# VISIONZERO

prince george's

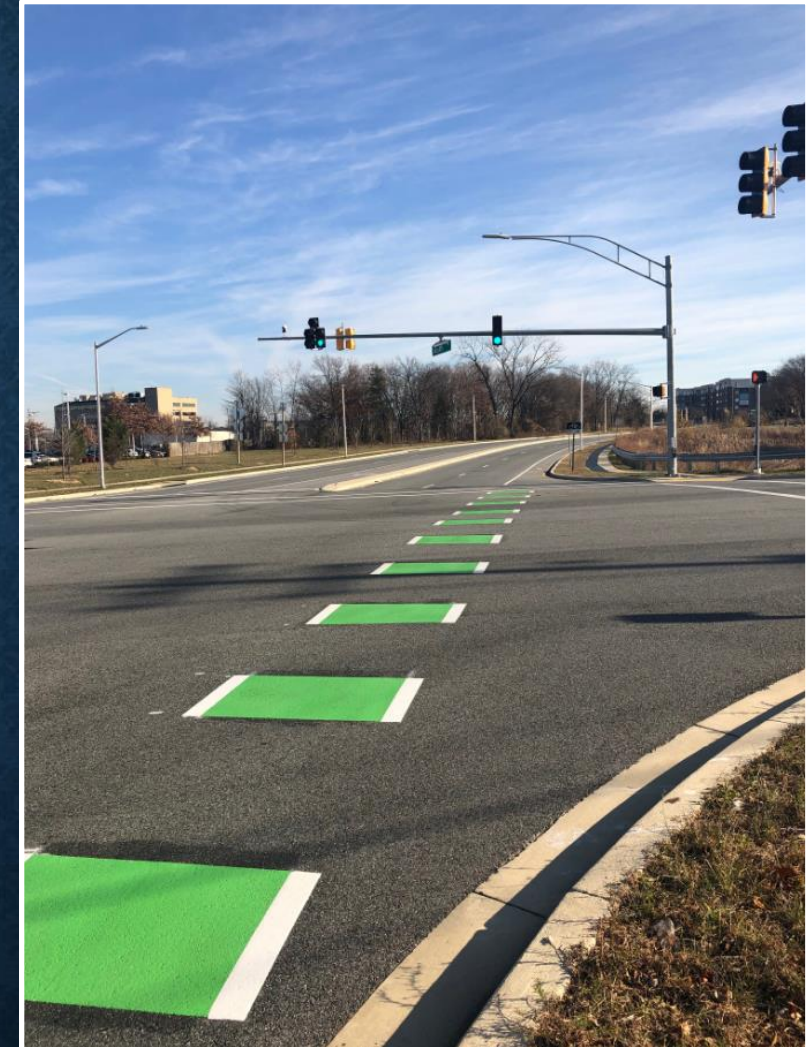
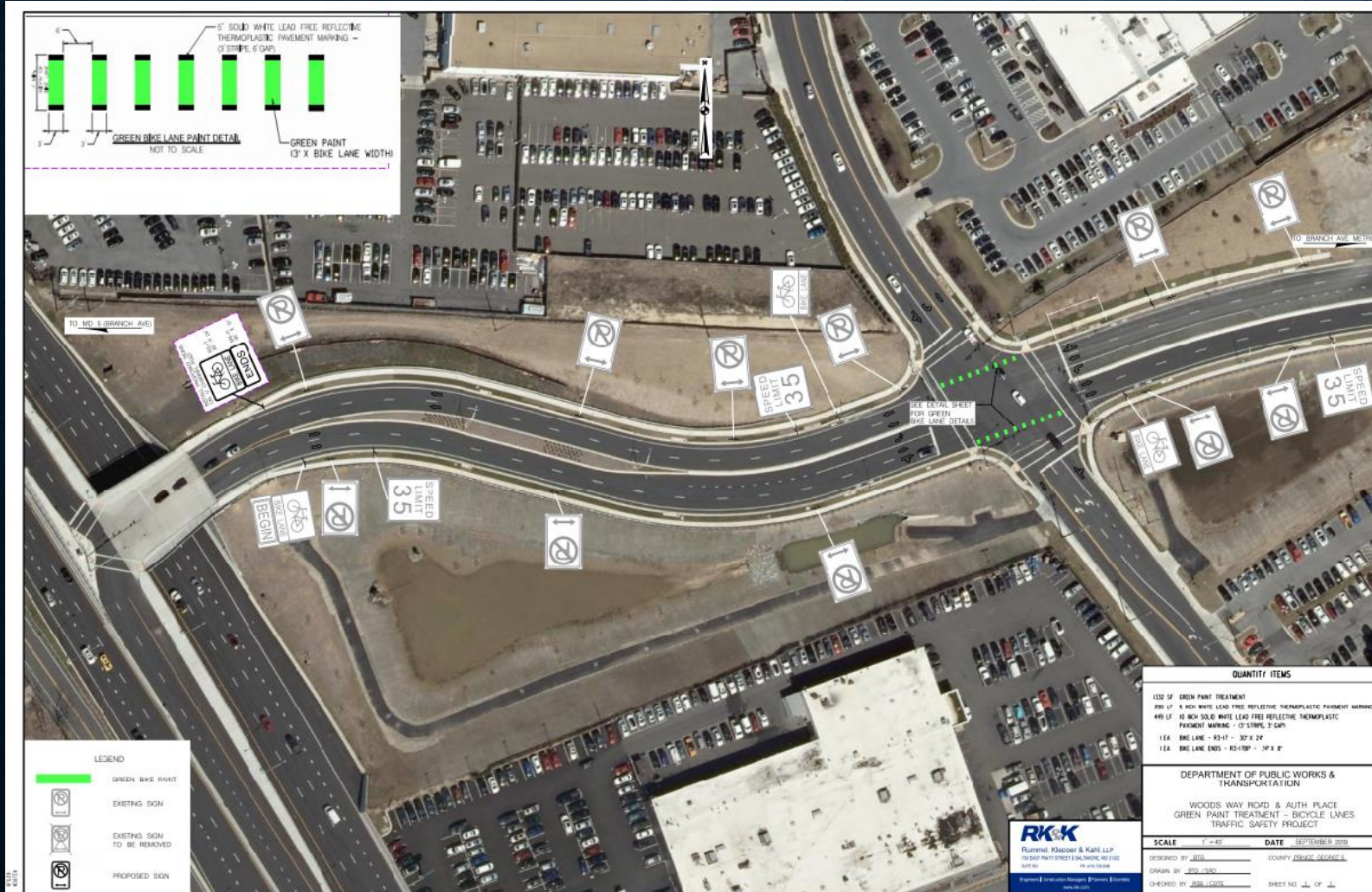


# GOAL:

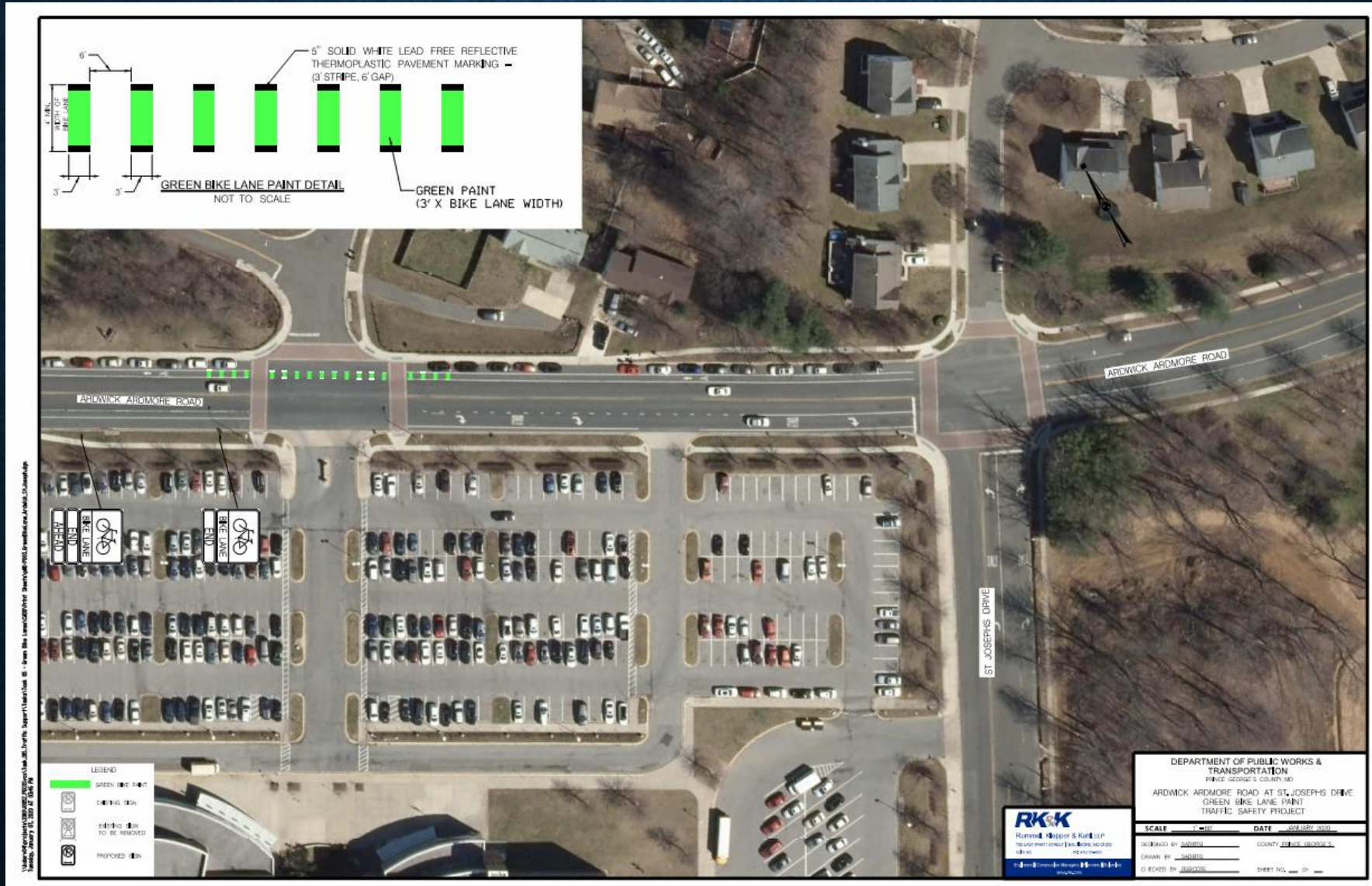
To bring awareness and highlight higher areas of conflict for bicyclists and vehicles along existing bicycle facilities and in the planning of future bicycle facilities, through the use of green paint.



# AUTH PLACE AT WOODS WAY



# ARDWICK ARDMORE ROAD AT ST. JOSEPHS DRIVE



# FORBES BOULEVARD AT FOLLY BRANCH TRAIL





# BROWN STATION ROAD, BROOK LANE AND JOHN RODGERS BOULEVARD PHASE 1

- Provide approximately three (3) miles of new centerline bicycle lanes to connect the residential community with Henry A Wise Jr. HS, M-NCPPC Kings Grant Park, Kings Grant Community Park and Marlboro Village Center.
- New urban roundabout intersection improvements to reduce number and severity of crashes and provide safer crossing conditions for pedestrians.
- Lower prevailing vehicular travel speeds.





# TRAFFIC SIGNAL MODERNIZATION

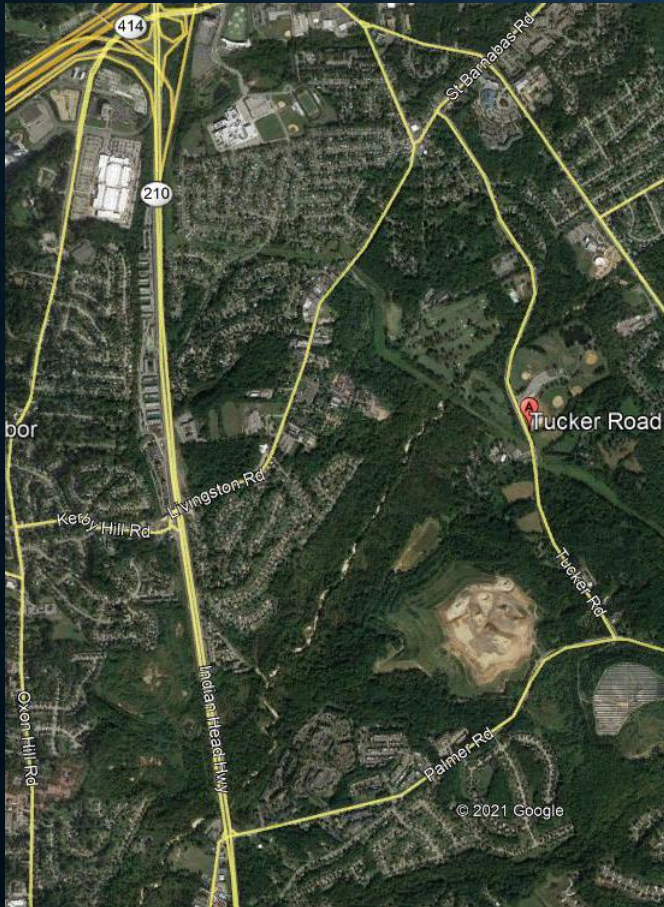
Ager Road at  
Hamilton Street  
traffic signal



- Traffic Signal Structural Assessment report to replace aging signals.
- Three (3) signals were in “Extreme” conditions and are in the process of re-build.
- Working on additional funding

# TUCKER ROAD & PALMER ROAD

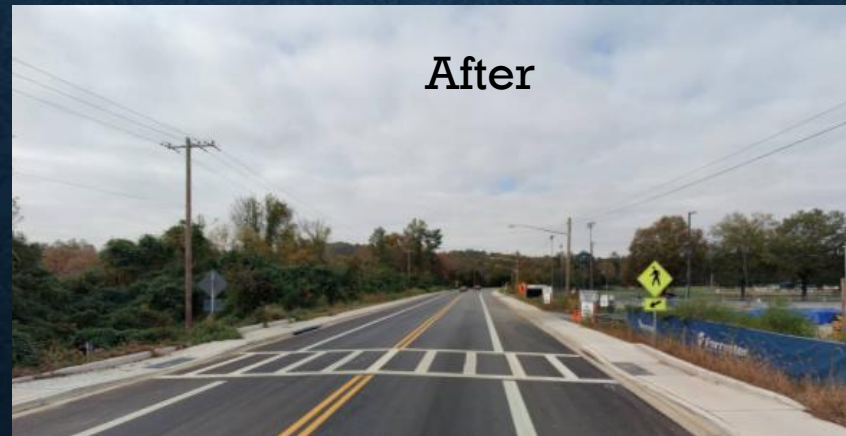
<https://vimeo.com/530260100>



Tucker Road Before



Palmer Road Before



After



After

# Q & A

***THANK YOU FOR ATTENDING***

**HADI QUAIYUM**  
**DIVISION CHIEF**  
**TE&SD/OEPM**