



Prince George's County

7th GREEN SUMMIT

annual

DEPARTMENT OF THE ENVIRONMENT

2021

C L E A N W A T E R W A Y S



5 TIPS ON MAINTAINING CLEAN AND HEALTHY WATERWAYS



Prevent polluted runoff—especially nitrogen, phosphorus, and sediment—from running into your local creeks, rivers, and the Chesapeake Bay. When water flows off our streets, parking lots, and building rooftops, it picks up all kinds of pollutants like pet waste, sediment, fertilizers, pesticides, oil, and automotive fluids. As more houses, roads, and shopping centers are built, more of this polluted stormwater or runoff makes its way through gutters and storm drains to the nearest stream.

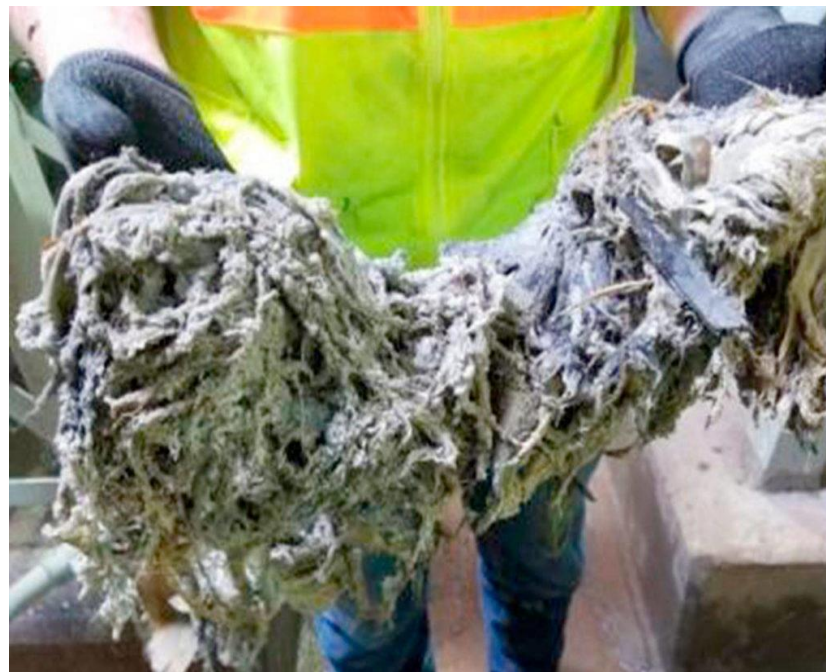
View the slides for tips on how you can take real action to reduce polluted runoff.



1 WIPES DON'T BREAK UP LIKE TOILET PAPER

Disinfectant wet wipes, paper towels and toilet paper are flying off the shelves due to the spread of the COVID-19 virus. But when we remember that products like baby wipes and wet wipes are not as “flushable” as typically advertised, it’s no surprise that we’re now at a greater risk for sewer blockages in our communities.

If TP isn’t available, it’s easy to reach for an alternative – but keep in mind these wipes need to stay out of our pipes, period. Keep a bin next to the toilet for disposal! Wet wipes belong in the trash with the baby's diaper and other used hygiene products.





1 WIPES DON'T BREAK UP LIKE TOILET PAPER

Check out these videos from WSSC Water to learn more!



English:
youtu.be/Vnr_2Y1fVFw



En español
youtu.be/DdLKVIGCgiQ



2 PROPERLY DISPOSE OF HOUSEHOLD HAZARDOUS WASTE

Properly dispose of hazardous household items. Oils, anti-freeze, paint, solvents, cleaners, preservatives, and prescription drugs should not be poured down a household or storm drain.



youtu.be/9CKBsT0WWQo



3 CAN THE GREASE

Grease is the number one culprit of sewer pipe overflows and backups. Sewer overflows and backups can cause health hazards, harm the environment and damage your home. Grease gets into the sewer from household drains and poorly maintained grease interceptors at restaurants or other businesses.

Be sure to properly dispose of cooking grease, by pouring fats and oils from turkey, bacon, etc. into an empty can and throwing the can away or take to the County's Household Hazardous Waste Acceptance Site at the Brown Station Road Landfill. Please do not pour oil and grease down drains or toilets.



youtu.be/3_DVq3AcfqQ



4 AIR POLLUTION IS A THREAT TO OUR WATERWAYS

Pollutants created and dispersed into the air by power plants, smokestacks, and vehicle exhaust are eventually washed out of the air by rain.

While air pollution has many sources, they share one critical origin: humans. The influx in air pollution in and around the Bay can be traced back to a corresponding influx of people in the region.

It is estimated an additional 157,000 people move into the region every year, bringing with them more vehicles and more demands for energy from power plants. And as a result, more nitrogen, sulfur, and mercury pollution will damage our waterways.



youtu.be/oCP0mfCEdvE



5 SAY NO TO PLASTIC POLLUTION

Plastic bags can be seen hanging from the branches of trees, flying in the air on windy days, settled amongst bushes and floating on rivers. They, along with other plastic materials can clog up gutters and drains causing water and sewage to overflow and become the breeding grounds of germs and bacteria that cause diseases. Choose a reusable bottle, take a reusable bag when shopping and take your plastic bags back to retail stores for disposal.



youtu.be/PeJVq5Pbjas