

## **HOW TO USE THE VISION ZERO DASHBOARD SITE**

The Vision Zero Prince George's Dashboard (Dashboard) allows users to access data on traffic crash incidents. The Dashboard will be updated on a regular basis to provide the most up-to-date information on the Prince George's County's (County) roadways.

The Vision Zero Prince George's Team hopes the Dashboard will be used by engineering and public health professionals, community-based organizations, community boards, County agencies, elected officials, advocates, and County residents to receive important information needed to make significant and informed decisions about eliminating traffic-related serious injuries and fatalities.

## **EXPLORING THE DASHBOARD**

The Dashboard offers interactive functionality and is best viewed on a desktop browser or on a tablet via latest versions of Google Chrome, Mozilla Firefox, Apple Safari, and Microsoft Edge.

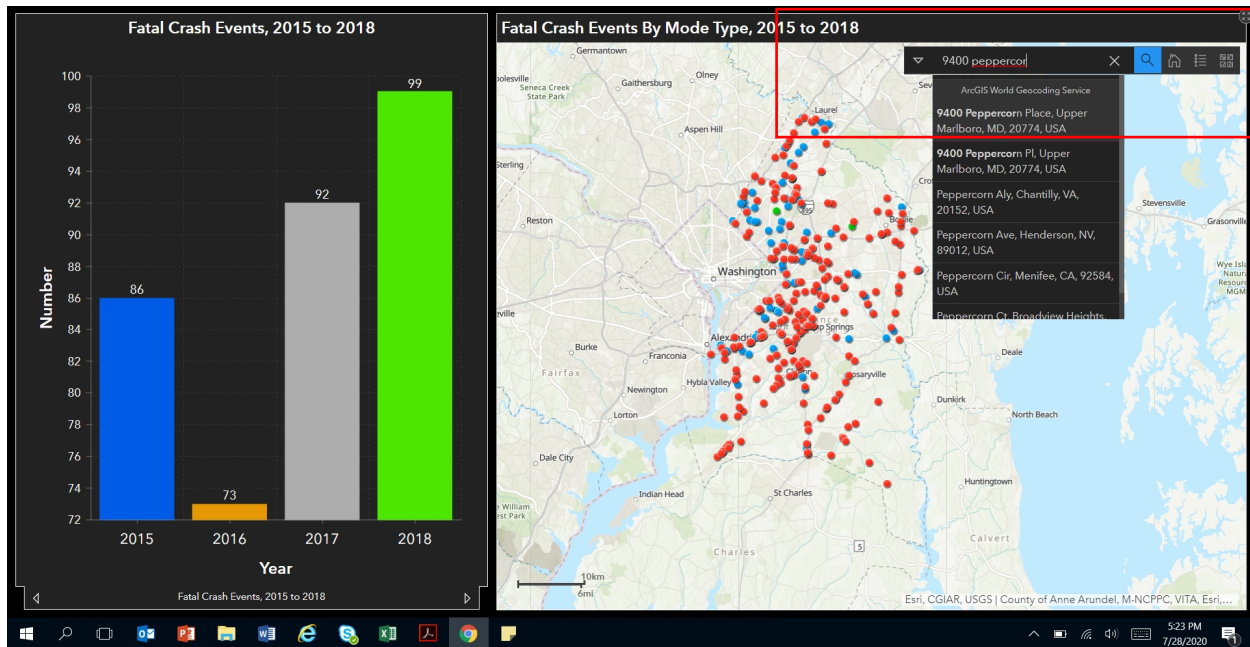
The Story Map is divided into two sections that include charts and a map:

- Pedestrian Serious Injury and Fatal Crash Events, 2015 to 2018
- Fatal Crash Event by Mode type, 2015 to 2018

## **INSTRUCTIONS ON NAVIGATING THE SECTIONS**

### **Pedestrian Serious Injury and Fatal Crash Events, 2015 to 2018.**

The first section shows only pedestrian fatalities and serious injury crashes. The charts and map provide details on pedestrian crash events for years 2015 through 2018. To view each of the three charts, simply click on the right and left arrow at the bottom of the chart. For the map, hover your mouse or click a crash point (red or blue) to see more details. Fatal crashes are shown as red dots and serious injury crashes are shown as blue dots. For example, to search for crashes in your neighborhood, click on the lens icon and type your home address into the search box. The lens icon is located next to the home button on the top right corner of the map (highlighted in blue). Below is a screen shot showing the search icon in the red rectangle:



### **Fatal Crash Event by Mode Type, 2015 to 2018**

The second section shows all fatal crash events in the County for years 2015 through 2018. Fatal crashes are filtered, and color coded by different mode types including vehicular, pedestrian and bike. The charts and map provide detailed information on fatal crash events for years 2015 through 2018. To view each of the three charts, simply click on the right and left arrow at the bottom of the chart. For navigating the map, hover your mouse or click a crash point (purple, orange or green) to see more details. Fatal vehicular crashes are shown as purple dots, pedestrian crashes are shown as orange dots and bicycle crashes are shown as green dots.

If you have any questions or would like assistance with accessing the content of the Dashboard, please email [VisionZeroPrinceGeorges@co.pg.md.us](mailto:VisionZeroPrinceGeorges@co.pg.md.us) and you will receive a response within two business days or please complete the Suggestions Form on [www.VisionZeroPrinceGeorges.com](http://www.VisionZeroPrinceGeorges.com).