

TEMPLE HILL ROAD CULVERT REPLACEMENT AT TINKERS CREEK

Temple Hill Road



prince
George's
county MARYLAND

Angela D. Alsobrooks
County Executive



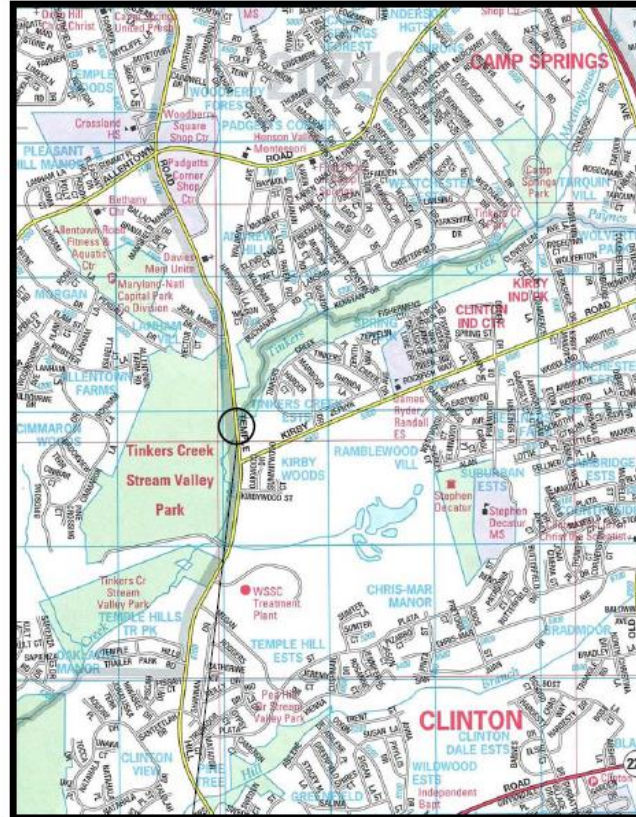
Terry L. Bellamy
DPW&T Director



PROJECT LOCATION MAP



2014 PRINCE GEORGES COUNTY BRIDGE INSPECTION
BRIDGE No. P-504C – TEMPLE HILL ROAD over TINKERS CREEK



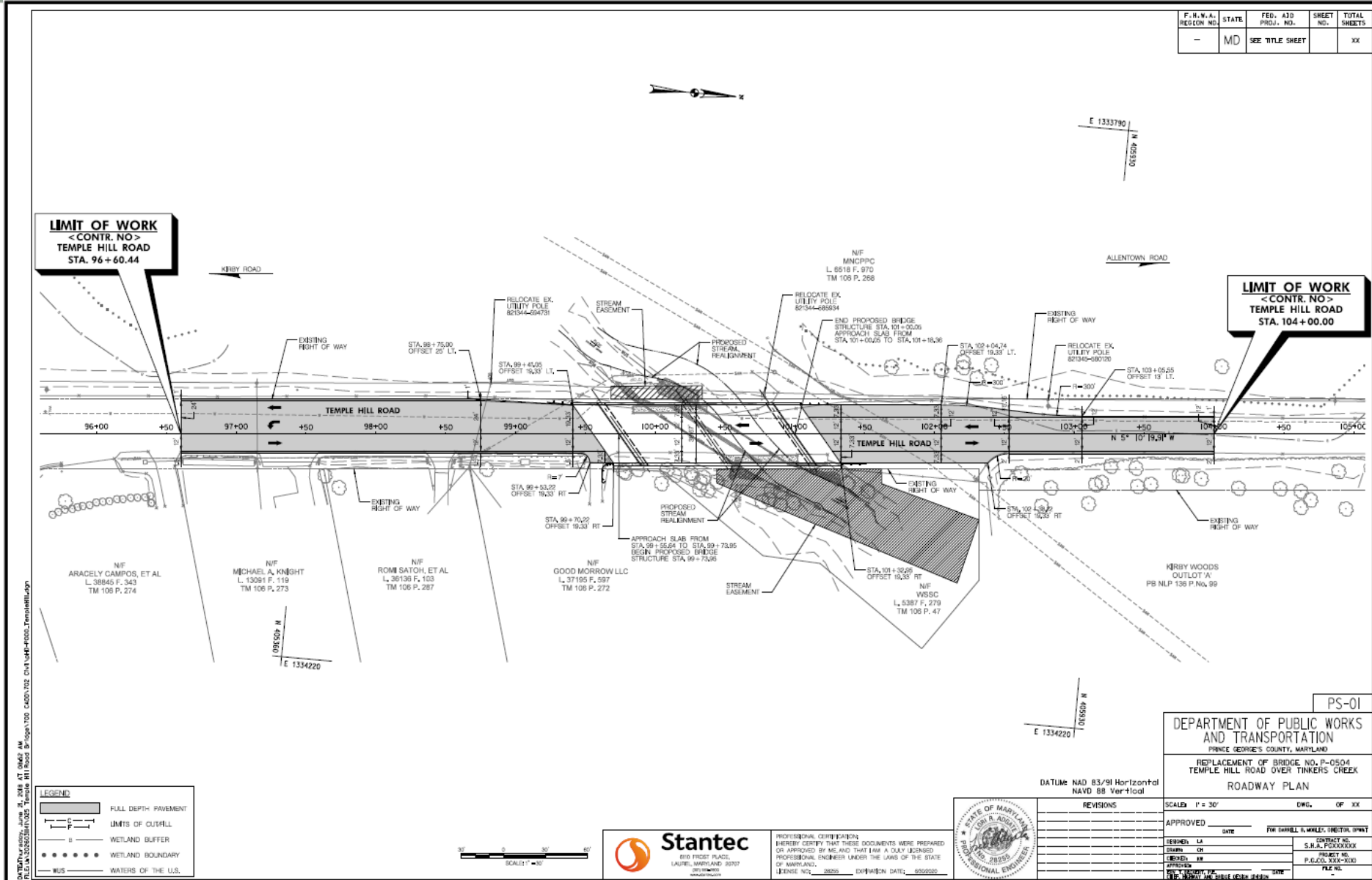
Bridge No. P-504C

ADC Street Grid Location: 5766-C6

LOCATION MAP

Map Copyright © Universal Map Group LLC, (800) 829-6277
Used with Permission. Permit No. 20902112

PROJECT LIMITS



POINTS OF CONTACT DURING DESIGN:

Erv Beckert, P.E.

Chief, Highway and Bridge Design Division

Mobile: 240.508.9610

Email: ETBeckert@co.pg.md.us

Nawaf Esayed.

Design Project Manager

Phone: 301.883.5642

Email: NEEsayed@co.pg.md.us

POINT OF CONTACT DURING CONSTRUCTION:

Dwight Joseph

Chief, Construction Division

Direct: 301. 883. 5633

Email: DJoseph@co.pg.md.us