

BOWIE RD. CULVERT IMPROVEMENTS



prince
George's
county MARYLAND

Angela D. Alsobrooks
County Executive



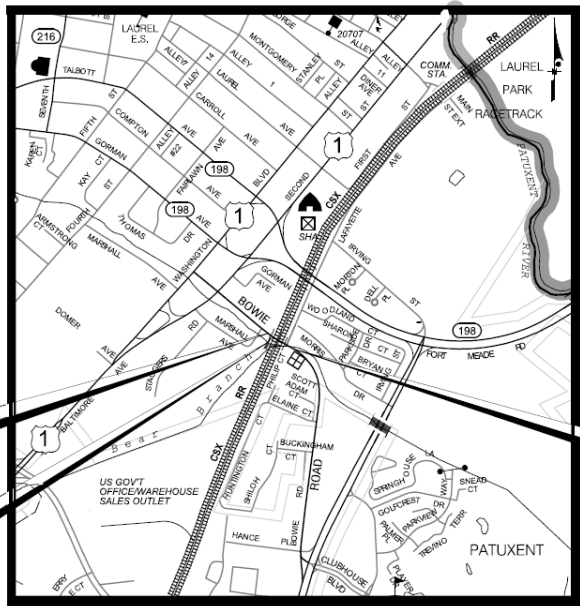
Terry L. Bellamy
DPW&T Director

PROJECT LIMITS & SAMPLE PLAN SHEET

Angela D. Alsobrooks
County Executive

Terry L. Bellamy
DPW&T Director

P-160 BOWIE ROAD OVER TRIBUTARY TO PATUXENT RIVER
P-161 BOWIE ROAD OVER BEAR BRANCH
CONTRACT NO. P.G.CO.934-H(B)
SHA PG816ZM1
F.A.P. NO. STBG-3(562)E

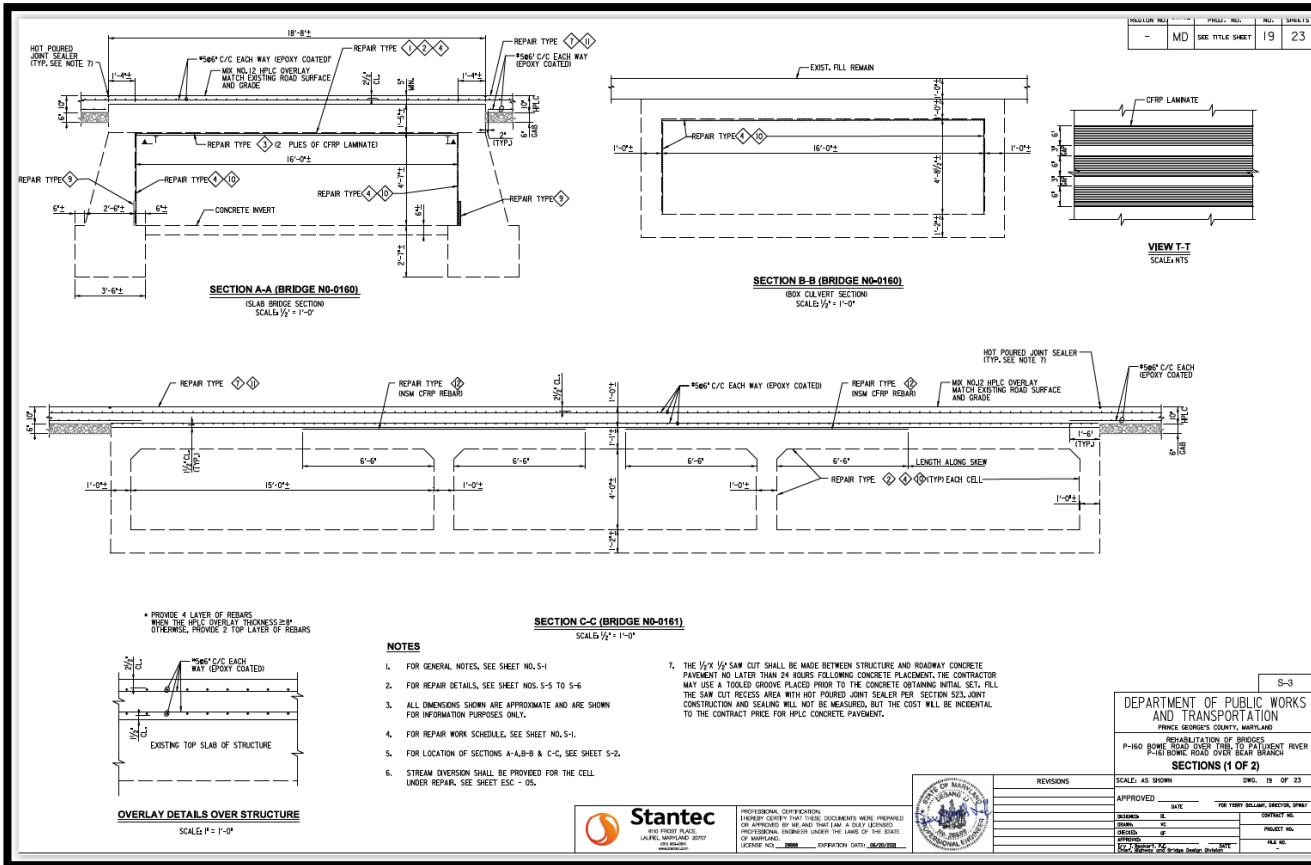


LIMIT OF WORK
BOWIE ROAD
STA. 100 + 67.63

LIMIT OF WORK
SELF STORAGE
ACCESS ROAD
STA. 200 + 90.67

LIMIT OF WORK
BOWIE ROAD
STA. 104 + 37.62

LOCATED IN PRINCE GEORGES COUNTY LENGTH OF PROJECT = 0.07 MILES



POINTS OF CONTACTS DURING DESIGN:

Erv Beckert, P.E.

Chief, Highway and Bridge Design Division

Mobile: 240.508.9610

Email: ETBeckert@co.pg.md.us

Jay Shah, P.E.

Design Project Manager

Phone: 301-883-5131

Email: JDShah@co.pg.md.us

POINT OF CONTACT DURING CONSTRUCTION:

Dwight Joseph

Chief, Construction Division

Direct: 301. 883. 5633

Email: djoseph@co.pg.md.us