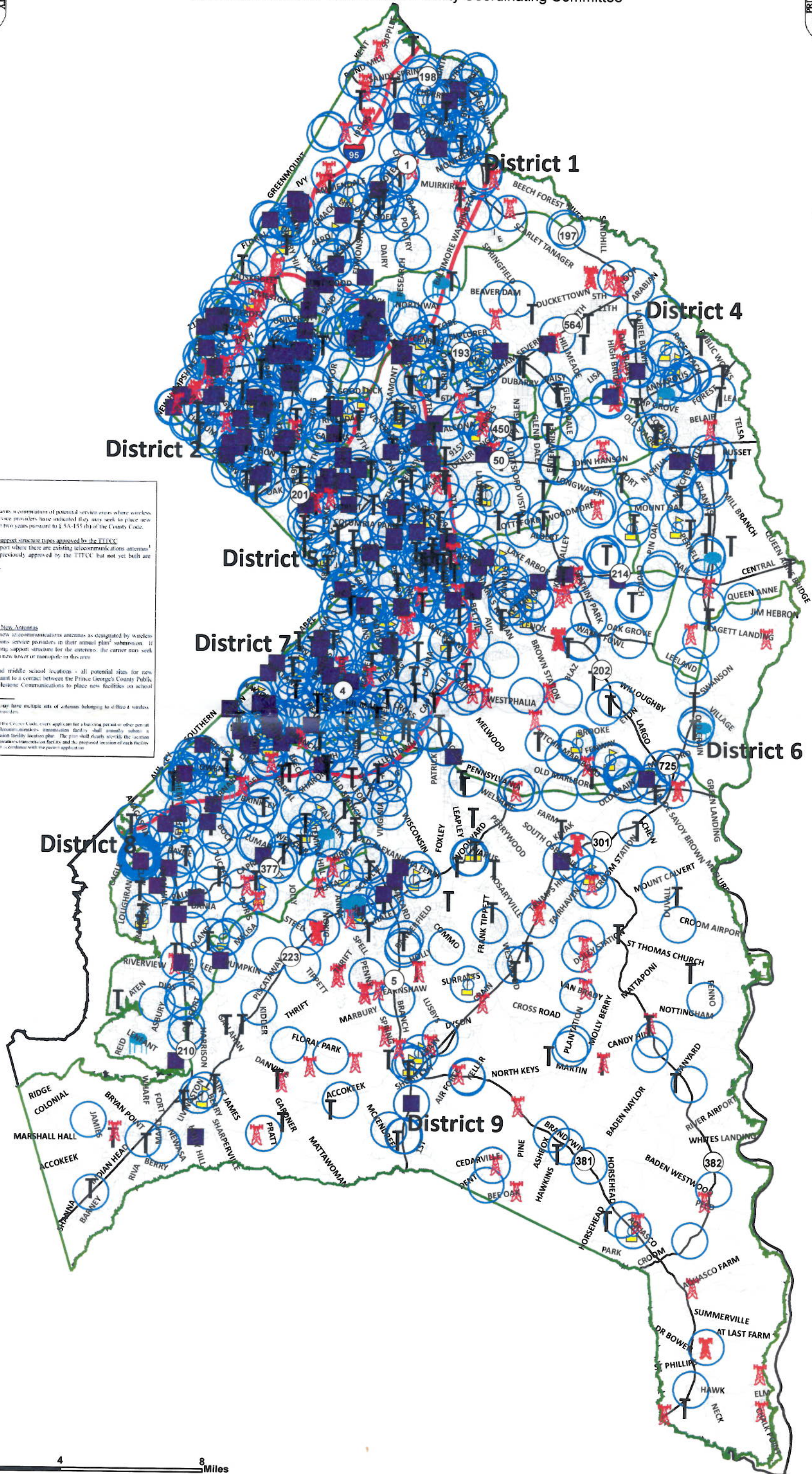




# Telecommunications Transmission Facilities Master Plan 2016-2017

Telecommunications Transmission Facility Coordinating Committee



### Legend

This Master Plan represents a continuation of potential service areas where wireless telecommunications service providers have indicated they may seek to place new antennas within the next two years pursuant to § 5A-155(b) of the County Code.

**Existing locations and support structure types approved by the TITFCC**  
Locations and type support where there are existing telecommunications antennas<sup>1</sup> or proposed antennas previously approved by the TITFCC but not yet built are shown below:

Water tower

Building

Monopole

Tower

### Target Service Area for New Antennas

Target area for new telecommunications antennas as designated by wireless telecommunications service providers in their annual plan<sup>2</sup> submission. If there is no existing support structure for the antennas, the carrier may seek construction of a new tower or monopole in this area.

### School Locations

High school and middle school locations - all potential sites for new monopoles pursuant to a contact between the Prince Georges County Public Schools and Milestone Communications to place new facilities on school property.

<sup>1</sup> Some existing structures may have multiple sets of antennas belonging to different wireless telecommunications service providers.

<sup>2</sup> Pursuant to § 5A-155(b) of the County Code, every applicant for a building permit or other permit for the erection of a telecommunications transmission facility shall annually submit a telecommunications transmission facility location plan. The plan shall clearly identify the location of every existing telecommunications transmission facility and the proposed location of each facility to be constructed or licensed in accordance with the permit application.

0 2 4 8 Miles

