



2011 REDISTRICTING COMMISSIONERS

SHARON R. TAYLOR, CHAIR

DAVID C. HARRINGTON

TAMARA DAVIS BROWN



**THE LEGAL AUTHORITY
FOR
THE REDISTRICTING COMMISSION
COUNTY CHARTER
SECTION 305
COUNTY RESOLUTION
CR-2-2011
2011 REDISTRICTING WEBPAGE**



REDISTRICTING COMMISSION WEB PAGE



County Executive, Rushern L. Baker, III

Enter Keyword

-- Select an Agency --

-- Select a Service --

Legislative Branch (Council)

About the Legislative Branch

Agenda

Calendars

Office of Communications

Council Administration

Audits & Investigation

Clerk of the Council

Zoning Hearing Examiner

Board of Appeals

Core Values

2011 Legislative Priorities

2011 County Council

Retreat

County Council Reports

Taskforce / Workgroups

Online Newsroom

Press Releases



2011 PRINCE GEORGE'S COUNTY REDISTRICTING COMMISSION

The 2011 Redistricting Commission was appointed pursuant to the prescriptions of [Section 305 of the County Charter](#), which states, in pertinent part, that "[T]he boundaries of Council districts shall be reestablished in 1982 and every tenth year thereafter. Whenever district boundaries are to be reestablished the Council shall appoint, not later than February 1 of the year prior to the year in which redistricting is to be effective, a commission on redistricting".

Thusly, the Council adopted [CR-2-2011](#), appointing the 2011 members of the Redistricting Commission and charging this public body with the mission to "prepare, publish, and make available a plan of Council districts and shall present that plan, together with a report explaining it, to the Council on or before September 1, 2011 ..." and further prescribed in accordance with law that "the plan shall provide for Council districts that are compact, contiguous, and equal in population".

COUNCIL RESOLUTION APPOINTING REDISTRICTING COMMISSION CR-2-2011

2011 PRINCE GEORGE'S COUNTY REDISTRICTING COMMISSIONERS

Sharon R. Taylor, Chair

David C. Harrington

Tamara Davis Brown

2011 REDISTRICTING COMMISSION MEETING SCHEDULE

COMMENTS ON REDISTRICTING

Please submit your comments on the Redistricting process below:

Home Page | Site Questions | Contact Us | Printer Version | Browse/Load

Residents | Business | Visitors | Government | Employment | Online Services | Gallery | Newsroom

Prince George's County, Maryland

IMPORTANT LINKS

[2001 Redistricting_Plan](#)

[2010 Census Data](#)

[U.S. Census Bureau Delivers Maryland's 2010 Census Population Totals, Including First Look at Race and Hispanic Origin Data for Legislative Redistricting](#)

[A Citizen's Guide To Redistricting, which is a product of the Brennan Center for Justice at NYU School of Law.](#)

PRESS RELEASES

[2011 REDISTRICTING COMMISSION TO HOLD PUBLIC HEARING ON APRIL 9TH](#)

[2011 REDISTRICTING COMMISSION WILL CONVENE ON MARCH 31ST](#)

[2011 REDISTRICTING COMMISSION WILL CONVENE ON MARCH 4TH](#)

[COUNTY COUNCIL APPOINTS REDISTRICTING COMMISSION](#)

AGENDA / MINUTES

[March 3, 2011](#)

[March 11, 2011](#)

[March 17, 2011](#)

WHAT THE LAW REQUIRES
&
OTHER POLICY
CONSIDERATIONS



Redistricting

Redistricting is the process of redrawing legislative district lines.

Creating Fair and Equal Representation in Government

Congressional Reapportionment

State Redistricting

Local Government Redistricting

School Districts



Redistricting Law

- Redistricting is the process of redrawing legislative district lines.
- The boundaries of Council districts were reestablished in 1982 and every tenth year thereafter following the census.
- Section 305. of the Prince George's County Charter - Redistricting Procedure



Redistricting Law

- Three Charter Requirements: The Redistricting Plan shall provide for Council districts that are compact, contiguous, and equal in population.
- Compact: A district is generally considered compact if it has a fairly regular shape, with constituents all living relatively near to each other.
- Contiguous: A contiguous district is a district where all parts of the district are connected to each other. This includes water connected by a bridge.
- Equal in Population: Also known as “One Person, One Vote”. When districts are drawn, each district’s population must be roughly equal. The maximum deviation is 5% of the average district population.

Sources: Charter §305 and Excerpts from “A Citizen’s Guide to Redistricting,” Justin Levitt, Brennan Center for Justice at NYU Law School, 2010.



Redistricting Law

- By September 1 of the year prior to the year in which redistricting is to be effective, the Commission shall prepare, publish, and make available a plan of Council districts and shall present that plan, together with a report explaining it, to the Council.
- The plan shall provide for Council districts that are compact, contiguous, and equal in population.
- No less than fifteen calendar days and no more than thirty calendar days after receiving the plan of the Commission, the Council shall hold a public hearing on the plan.
- If the Council passes no other law changing the proposal, then the plan, as submitted, shall become law, as of the last day of November, as an act of the Council, subject to Sections 320 and 321 of the Charter.



Redistricting - Other Policy Considerations

- Citizen input for proposed districts
- Other Considerations

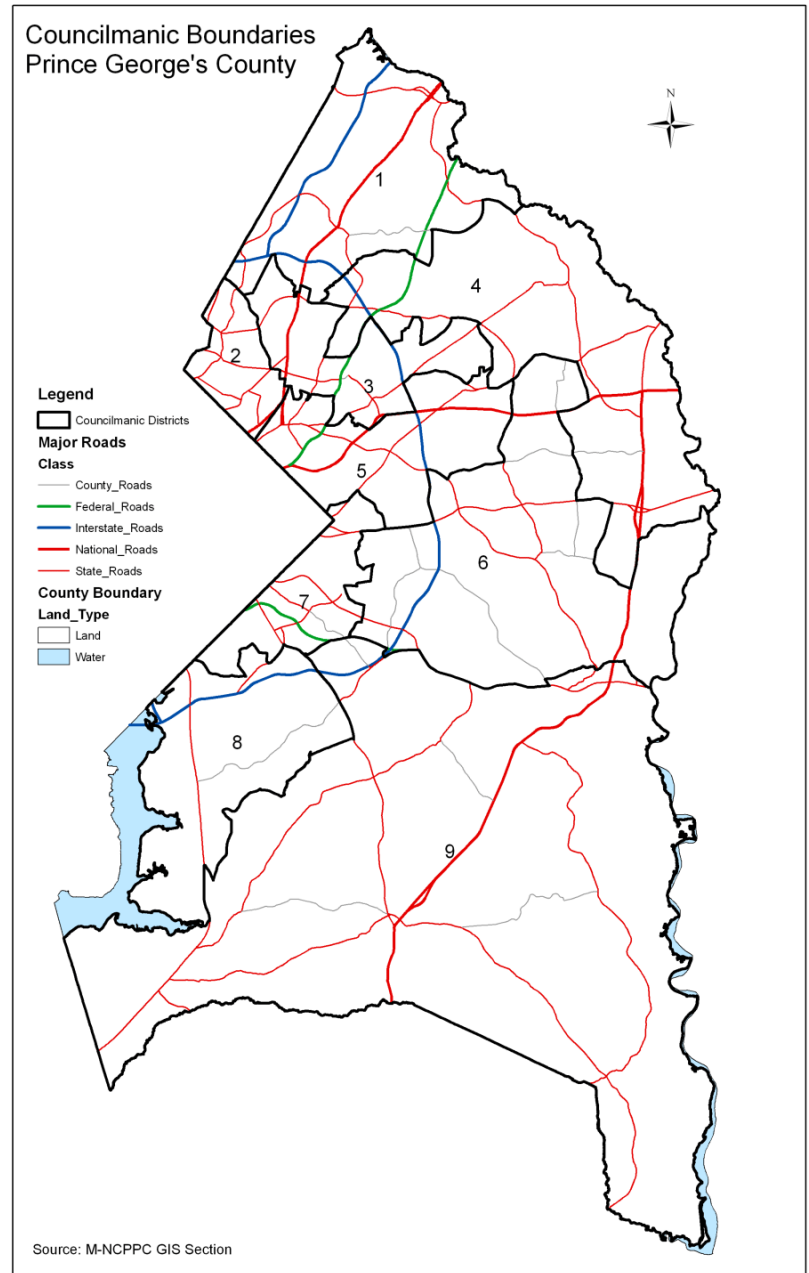


USING THE CENSUS DATA - MAPPING & SOFTWARE TOOLS



Census Geography

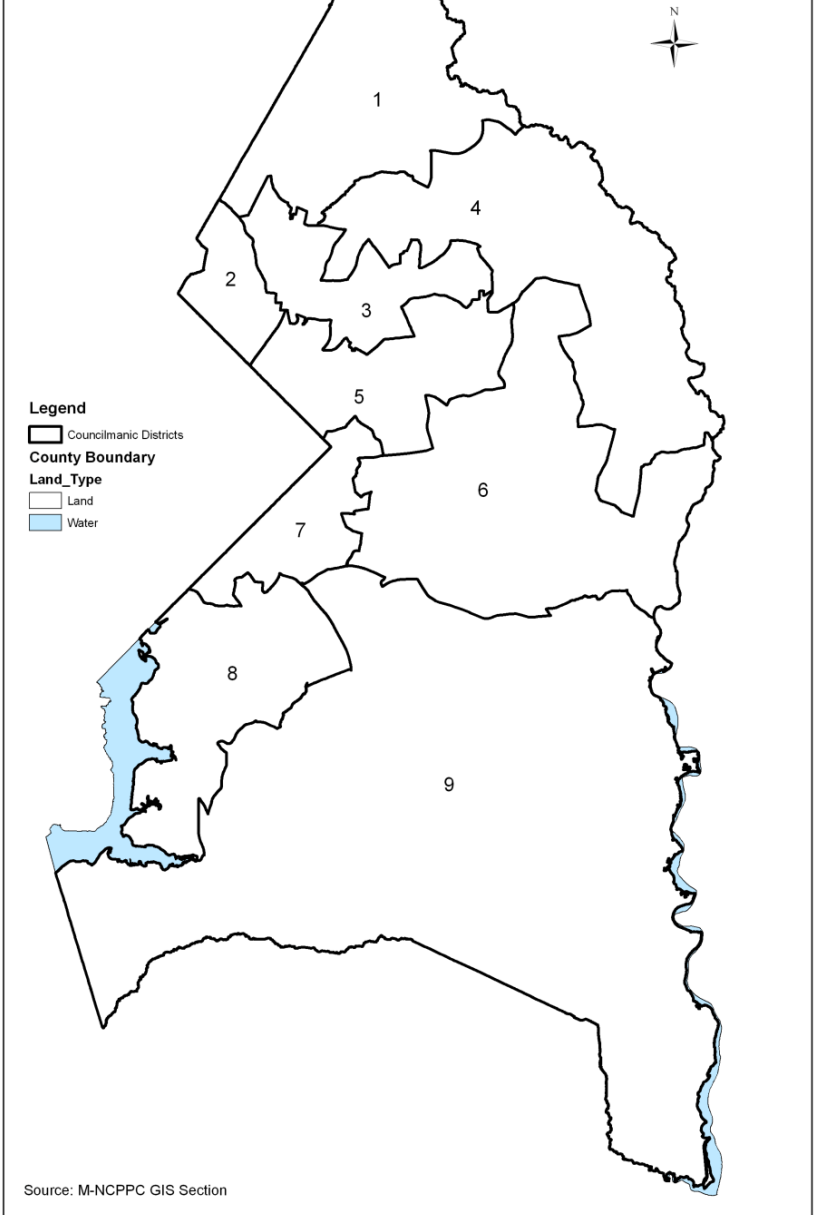
- State
 - County
 - Incorporated Places
 - Census Designated Places
 - Census Tract
 - Block Group
 - Block



Council Districts

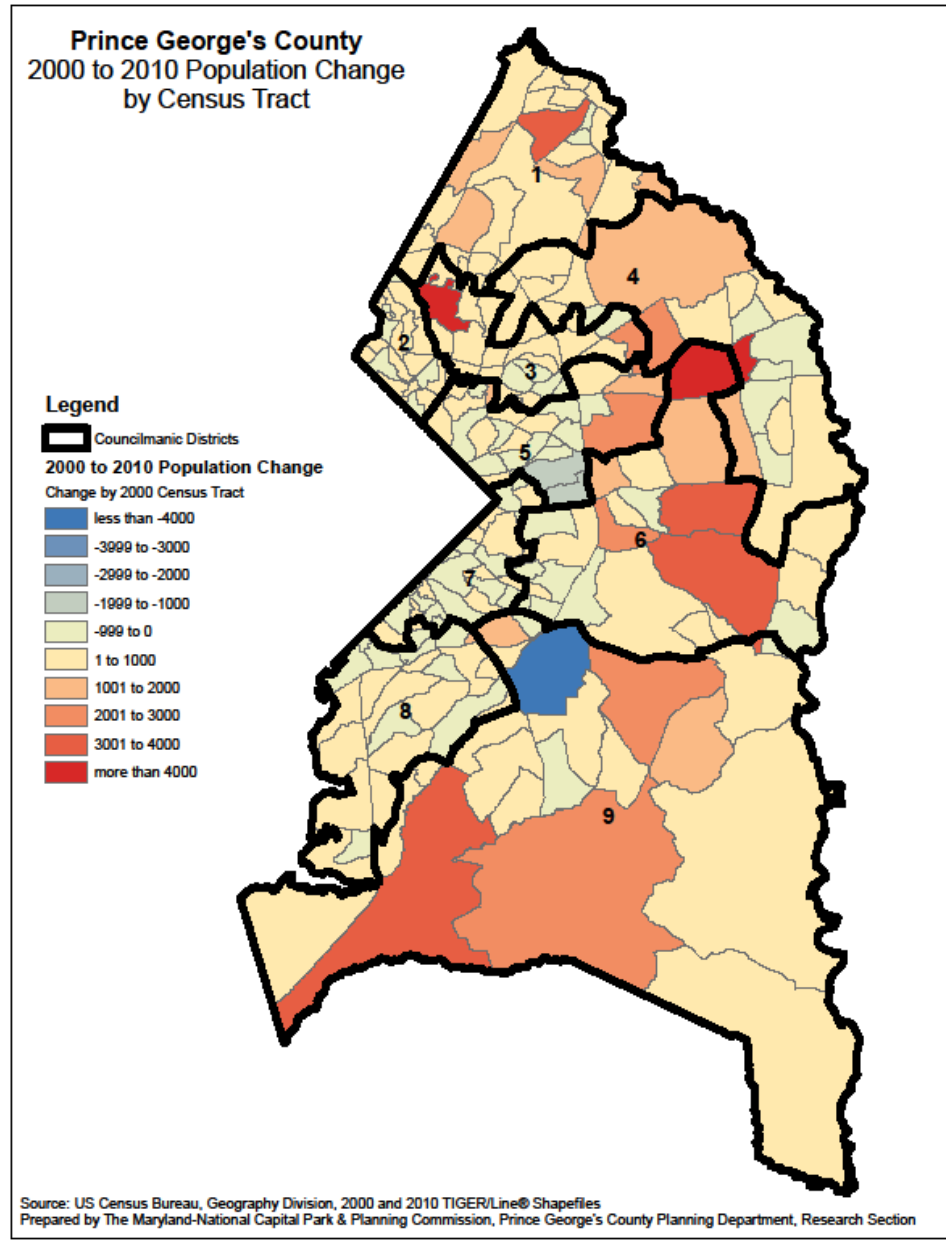


Councilmanic Boundaries
Prince George's County



Population Change 2000 to 2010

Census Data is used to identify where population change has occurred.



Population Change and Target District Population

| 2000 Census Population | | | | 2010 Census Population | | | |
|------------------------|------------------|-------------------|-----------|------------------------|------------------|-------------------|-----------|
| District No. | TOTAL POPULATION | TARGET POPULATION | DEVIATION | District No. | TOTAL POPULATION | TARGET POPULATION | DEVIATION |
| 1 | 86,622 | 89,057 | -2.73% | 1 | 98,429 | 95,939 | 2.60% |
| 2 | 88,045 | 89,057 | -1.14% | 2 | 92,203 | 95,939 | -3.89% |
| 3 | 89,817 | 89,057 | 0.85% | 3 | 99,218 | 95,939 | 3.42% |
| 4 | 86,160 | 89,057 | -3.25% | 4 | 94,231 | 95,939 | -1.78% |
| 5 | 90,496 | 89,057 | 1.62% | 5 | 94,479 | 95,939 | -1.52% |
| 6 | 89,181 | 89,057 | 0.14% | 6 | 105,568 | 95,939 | 10.04% |
| 7 | 90,264 | 89,057 | 1.36% | 7 | 88,975 | 95,939 | -7.26% |
| 8 | 89,476 | 89,057 | 0.47% | 8 | 90,915 | 95,939 | -5.24% |
| 9 | 91,454 | 89,057 | 2.69% | 9 | 101,103 | 95,939 | 5.38% |
| County Total | 801,515 | | | County Total | 863,420 | | |



Redistricting Software Tools

MA Congress Current.mxd - ArcMap - ArcView

File Edit View Bookmarks Insert Selection Tools Window Redistricting Help

1:47,075 Editor Task Create New Feature Target

| District | Population | Deviation | % Deviation | White | % White | Black | % Black | Amindian | % Amindian | Asian | % Asian | Hawaiian | % Hawaiian | Other | % Other |
|----------|------------|-----------|-------------|---------|---------|---------|---------|----------|------------|--------|---------|----------|------------|--------|---------|
| 3 | 634,585 | -325 | -0.05% | 564,319 | 88.93% | 18,068 | 2.85% | 1,466 | 0.23% | 20,368 | 3.21% | 204 | 0.03% | 17,580 | 2.77% |
| 4 | 634,624 | -286 | -0.05% | 567,863 | 89.45% | 14,025 | 2.21% | 1,419 | 0.22% | 20,231 | 3.19% | 183 | 0.03% | 17,202 | 2.71% |
| 5 | 635,326 | 416 | 0.07% | 530,838 | 83.52% | 14,420 | 2.27% | 1,457 | 0.23% | 33,459 | 5.27% | 230 | 0.04% | 40,472 | 6.37% |
| 6 | 636,554 | 1,644 | 0.26% | 581,899 | 91.42% | 13,877 | 2.18% | 867 | 0.15% | 15,983 | 2.51% | 198 | 0.03% | 13,869 | 2.18% |
| 7 | 634,207 | -623 | -0.1% | 545,960 | 86.06% | 22,352 | 3.52% | 968 | 0.15% | 36,010 | 5.66% | 265 | 0.04% | 13,999 | 2.21% |
| 8 | 634,835 | -75 | -0.01% | 347,878 | 54.8% | 147,376 | 23.21% | 2,466 | 0.39% | 52,054 | 8.2% | 447 | 0.07% | 53,487 | 8.43% |

Layers: Districts, ccCounty, ccTract, ccBlockGroup, ccBlock, Streets, Water_Area, ccPlace

Pending Changes

| District | 7 | 6 |
|---------------------|---------|---------|
| Population | 635,041 | 635,800 |
| Change - Population | 754 | -754 |
| Ideal Value | 634,910 | 634,910 |
| Deviation | 131 | 890 |
| % Deviation | 0.02% | 0.14% |
| White | 546,061 | 581,258 |
| Change - White | 701 | -701 |
| % White | 86.07% | 91.42% |
| Black | 22,355 | 13,874 |
| Change - Black | 3 | -3 |
| % Black | 3.52% | 2.18% |
| Amindian | 968 | 967 |

Redistricting: Target 7, Source 6, Selection ccBlock

Map showing District 6 (red) and District 7 (orange) in the Boston area, including labels for Pinhurst, Lexington, and Woburn.

Display Source Selection

Drawing Arial -71.262 42.514 Decimal Degrees



CLOSING REMARKS
BY
SHARON R. TAYLOR, CHAIR

