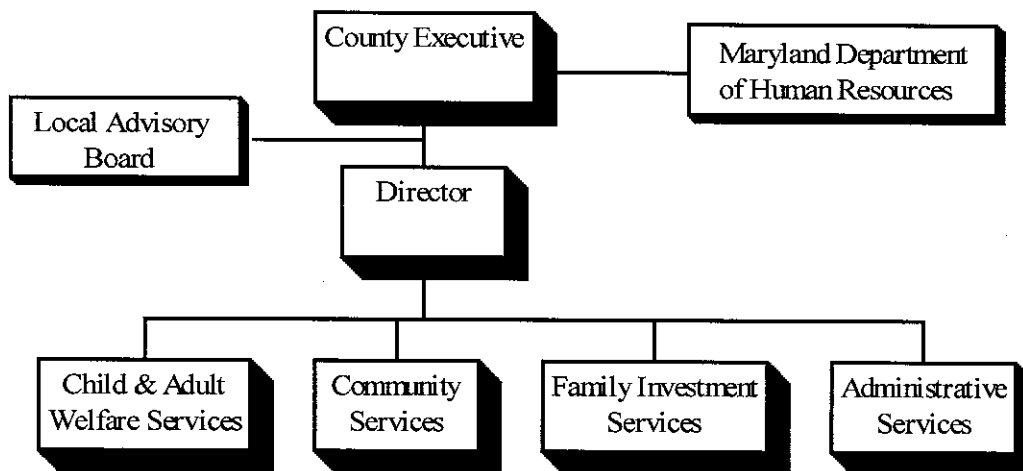


DEPARTMENT OF SOCIAL SERVICES - 93

MISSION

Prince George's County Department of Social Services provides opportunities for the residents of the County to become independent, responsible, and stable members of the community. Self-sufficiency & personal responsibility are promoted by providing intervention services that strengthen families, protect children and assist vulnerable adults.

ORGANIZATION CHART



DESCRIPTION OF SERVICES

- Provides a wide variety of human services programs to families and children in need at several sites throughout the County. Offerings include but are not limited to the following: Temporary Cash Assistance to Needy Families (TANF), Food Stamps, Medical Assistance, Child Care Assistance, Child and Adult Protective Services, Foster Care/Adoptions, Homeless Services, Emergency Assistance, Long Term Care, In-Home Aide Services and Family Preservation Services.
- Manages and administers State and County programs totaling over \$35 million with a combined State, County and contract staff of approximately 900 positions.
- Functions as a dual State and County agency under the direction of the Secretary of the Maryland Department of Human Resources (DHR), the Prince George's County Executive and the local advisory Board of Social Services. Appropriations for programs and services are included in both the State of Maryland and Prince George's County budgets.
- Responds to referrals from other agencies - the Courts, law enforcement, other human service agencies - for child and adult protective services, crisis intervention services, and legal case preparation.
- Oversees the reform of Federal and State policies regarding welfare benefits, and provides technical assistance to entities seeking to move welfare clients toward self-sufficiency.
- Helps County residents comply with requirements of Federal and State assistance programs.
- Develops information to quantify the County's human service needs.