

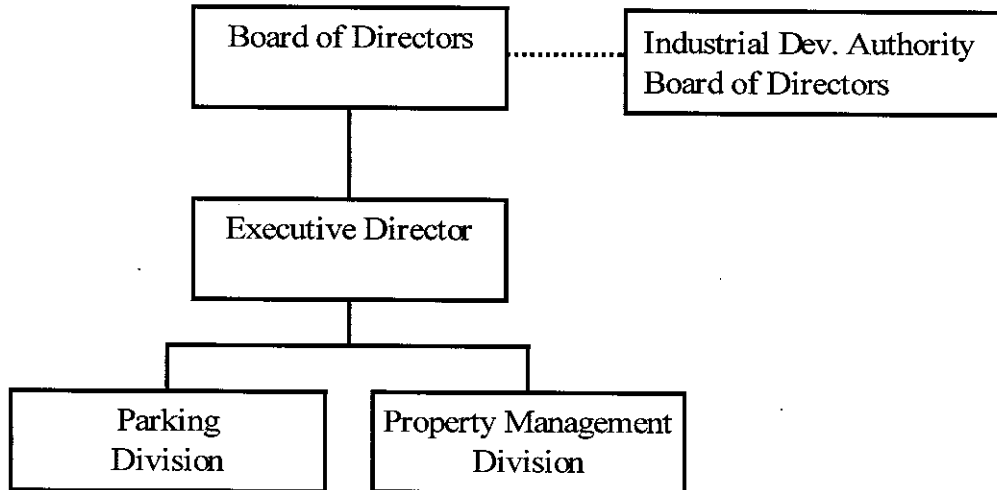
REVENUE AUTHORITY

AUTHORITY DESCRIPTION

The Revenue Authority of Prince George's County was established by Council Resolution 61-1998. The Authority's purpose is to exercise its power for projects in Prince George's County that are devoted wholly or partially for public uses, the public good or general welfare and to stimulate employment or economic growth in the County. The Authority consists of five public members that are nominated by the County Executive and confirmed by the County Council and two *ex officio* members. Each of the public members serve terms of four years but remain in the Authority until a successor can be approved. The Authority appoints an Executive Director, Secretary-Treasurer and General Counsel with the consent of the County Executive. The Authority may also appoint other positions as deemed necessary.

Pursuant to Council Bill 79-2001, title to all property, obligations and assets held by the Parking Authority of Prince George's County was transferred to the Revenue Authority in FY2002.

ORGANIZATION CHART



FY2004 OVERVIEW

The Authority will operate several parking facilities on behalf of the County: the New Carrollton AMTRAK-METRO Parking Garage, New Carrollton East Lot (Interim AMTRAK), and five fringe commuter parking lots (in Bowie, Clinton, Fort Washington, Laurel and Oxon Hill). In addition, the Authority manages all of the County's on and off street parking meters. All facilities and their operations are covered by various agreements between the Revenue Authority and the County, the Washington Metropolitan Area Transit Authority (WMATA), and the Maryland State Highway Administration (SHA).

The Authority also manages by separate agreements the Hyattsville Justice Center Garage, the public parking areas of the Upper Marlboro Justice Center garage and lot, the visitor parking for the County Detention Center, and the parking meter service and repair program for the City of Mt. Rainier. Finally, the Authority is working with public and private entities to develop the Capital Centre complex into a regional shopping center.

The Authority will continue to enforce parking regulations for all facilities owned, leased or operated by the Authority, as well as METRO station parking lots and garages in unincorporated areas of the County. The Authority manages and processes all parking tickets issued by County Police, Fire, Sheriff and Detention Center Officers, METRO Police and Authority Officers. The Authority collects all parking fines and disburses revenues to the County's General Fund.

REVENUE

Facilities Operating Income	\$4,542,100
Interest Income	30,000
Use of Fund Balance	0
	<hr/>
TOTAL REVENUE	\$4,572,100

OPERATING EXPENSES

Facilities Operating Expense	\$2,239,300
Reserve for Maintenance	585,500
	<hr/>
<i>SUBTOTAL - OPERATING EXPENSES</i>	\$2,824,800

ADMINISTRATIVE EXPENSES

Net Compensation and Benefits	\$405,500
Operating Supplies and Expenses	591,800
Capital Outlay	0
Fund Balance Contribution	0
	<hr/>
<i>SUBTOTAL - ADMINISTRATIVE EXPENSES</i>	\$997,300

OTHER EXPENSES

Payments to County	<hr/>
	\$750,000
	<hr/>
TOTAL EXPENSES	\$4,572,100