

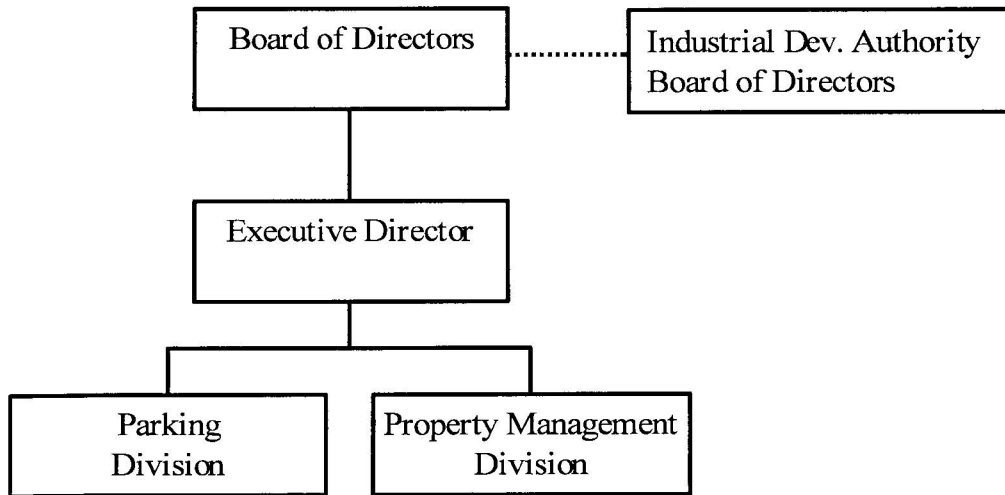
REVENUE AUTHORITY

MISSION

The mission of the Revenue Authority is to streamline procurement, land acquisition, and land disposition processes; staff expertise in land development, economic development, and capital financing and facilities maintenance; and finance revenue bonds for government and public/private development and redevelopment partnerships.

The *Revenue Authority* is dedicated to promoting the public interest of Prince George’s County by: facilitating economic development and employment growth, owning, operating, and maintaining revenue producing facilities, financing County Capital Improvement Projects, and managing a self-supporting public parking program.

ORGANIZATION CHART



CORE RESPONSIBILITY

- Increase the knowledge, understanding and enjoyment of the visual arts in the public environment, to encourage participation in the art in public spaces in the County, to reflect the County’s rich cultural and ethnic diversity, to integrate art within the County’s public spaces where it will be highly accessible and visible to County residents.
- Manage two garages and one parking lot located in the County for public use: *New Carrollton Garage* and *Hyattsville Justice Center Garage*, located in New Carrollton, and Hyattsville, respectively. *New Carrollton Garage* has 1,017 spaces and serves *Metro, MARC, and AMTRAK*, whereas, the *Hyattsville Justice Center Garage* has 280 spaces and serves the *County Police District I, District Court of Maryland, Federal Court, and County Service Building*. All garages are operational and staffed 24 hours daily.
- Manage five commuter lots: *Laurel Fringe Lot*, 684 spaces; *Bowie Fringe Lot*, 630 spaces; *Ft. Washington Fringe Lot*, 418 spaces; *Clinton Fringe Lot*, 422 spaces; *Oxon Hill Fringe Lot*, 610 spaces

FY 2004 KEY ACCOMPLISHMENTS

- Completed the Boulevard at the Capital Centre, a 460,000 square foot development located at the site of the former Capital Centre, opened in the fall of 2003. The 70-acre development site will promote mixed-use entertainment, premium restaurants, and retail shopping.

FY 2005 FISCAL & STAFFING OVERVIEW

The FY 2005 Operating Budget Plan for the Revenue Authority is projected to be over \$5.3 million, which represents an increase of \$765,000, or 17 percent, over the FY 2004 Approve Budget Plan. The slight increase results primarily from the adjustments made in order to achieve administrative and operational improvement to the Authority to provide an efficient and effective working environment.

REVENUE

Facilities Operating Income	5,306,700
Interest Income	30,000
Use of Fund Balance	0
TOTAL REVENUE	\$5,336,700

OPERATING EXPENSES

Facilities Operating Expenses	2,510,900
Reserve for Maintenance	697,300
SUBTOTAL - OPERATING EXPENSES	\$3,208,200

ADMINISTRATIVE EXPENSES

Net Compensation and Benefits	437,300
Operating Supplies and Expense	691,200
Capital Outlay	0
Fund Balance Contribution	0
SUBTOTAL - ADMINISTRATIVE EXPENSES	\$1,128,500

OTHER EXPENSES

Payment to the County	1,000,000
TOTAL EXPENSES	\$5,336,700