



Angela D. Alsobrooks
County Executive



Joseph P. Gill
Director



Terry Bellamy
Director

Allison Street Flood Control Project Levee Rehabilitation and 34th Street Bridge Replacement

Wednesday, July 24, 2019





Angela D. Alsobrooks
County Executive

Joseph P. Gill
Director

Terry Bellamy
Director

Presentation Overview



- **Information on Existing Allison Street Levee**
- **Levee Certification Program**
- **Allison Street Levee Certification Work**
 - Levee System Raising and Extension
- **Construction Schedule**



Angela D. Alsobrooks
County Executive



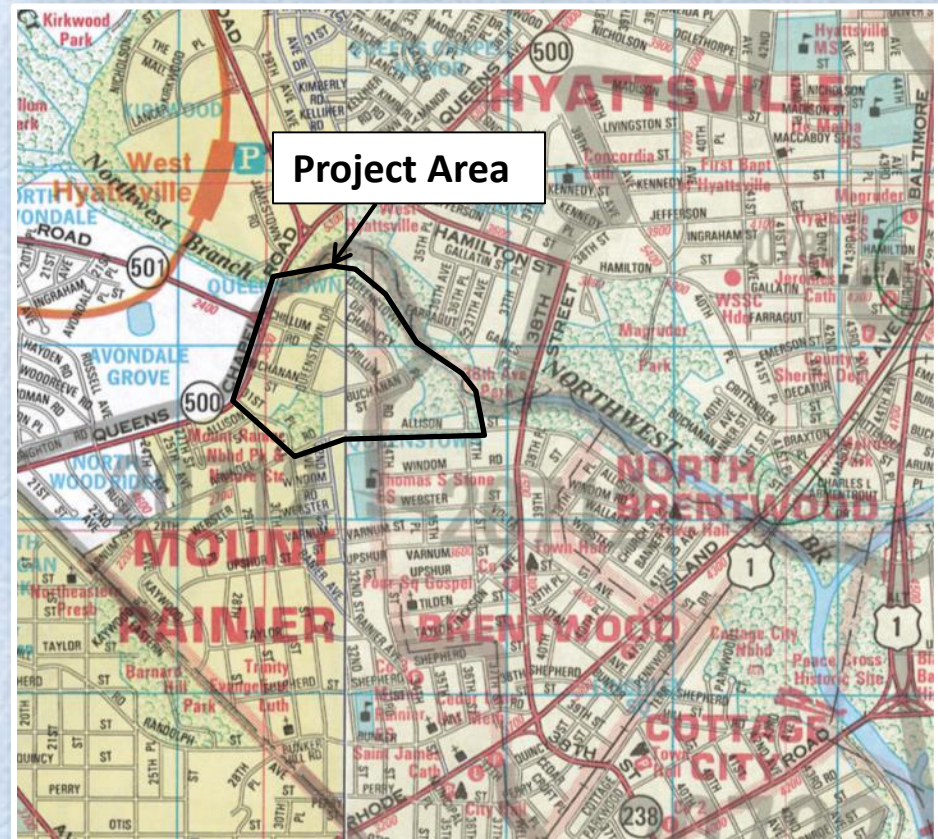
Joseph P. Gill
Director



Terry Bellamy
Director

Allison Street Levee

- Constructed by the Washington Suburban Sanitary Commission (WSSC) in the 1980s
- An extension of the US Army Corps of Engineers (USACE) Anacostia Levee System, constructed in the 1950's
- Certification of the Anacostia Levee System is completed





Angela D. Alsobrooks
County Executive



Joseph P. Gill
Director



Terry Bellamy
Director

Existing Allison Street Levee System





Angela D. Alsobrooks
County Executive



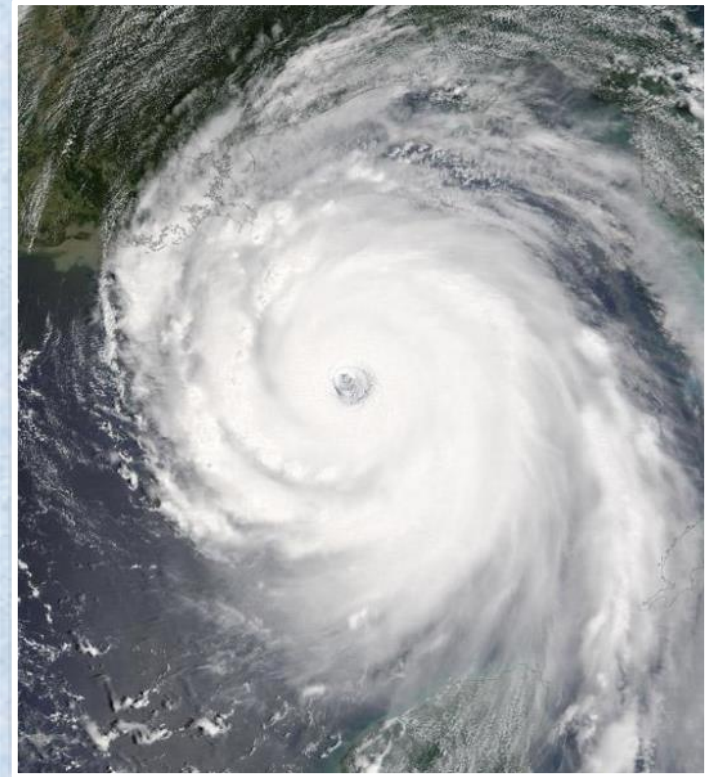
Joseph P. Gill
Director



Terry Bellamy
Director

Levee Certification Program

- **Following the disastrous impacts of Hurricane Katrina in 2005, the USACE initiated a nationwide evaluation of levee systems**
- **Code of Federal Register 44-65.10 requires that a levee accredited by FEMA and shown on a Flood Insurance Rate Map (FIRM) be certified by a Professional Engineer or a Federal Agency**
- **Prince George's County Evaluation Report, October 2010, identified work elements required on the Allison Street Levee System to meet 44 CFR 65.10 and be certified**





Angela D. Alsobrooks
County Executive



Joseph P. Gill
Director



Terry Bellamy
Director

- **Improvements will be implemented/constructed by the County:**
 - Department of the Environment (DoE)
 - Department of Public Works and Transportation (DPW&T)
- **Upon Allison Street Levee Certification:**
 - FEMA recommends that property owners review flood insurance requirements with their private insurer when the “seclusion” area is revised on the FEMA maps



Angela D. Alsobrooks
County Executive



Joseph P. Gill
Director



Terry Bellamy
Director

What does this mean to you?

- **The Allison Street North and Allison Street South Levee Systems do not meet the requirements in the National Flood Insurance Program (NFIP) regulations related to a levee system's capacity to provide 1-percent-annual-chance flood protection. This project's intent is that the levees will be eligible for accreditation upon the project completion.**
- **FEMA has mapped the areas behind these levee systems using a process called "seclusion" mapping which includes map notes explaining that these flood hazards will be updated later when updated levee analysis and mapping is applied.**



Angela D. Alsobrooks
County Executive



Joseph P. Gill
Director



Terry Bellamy
Director

What does this mean to you?



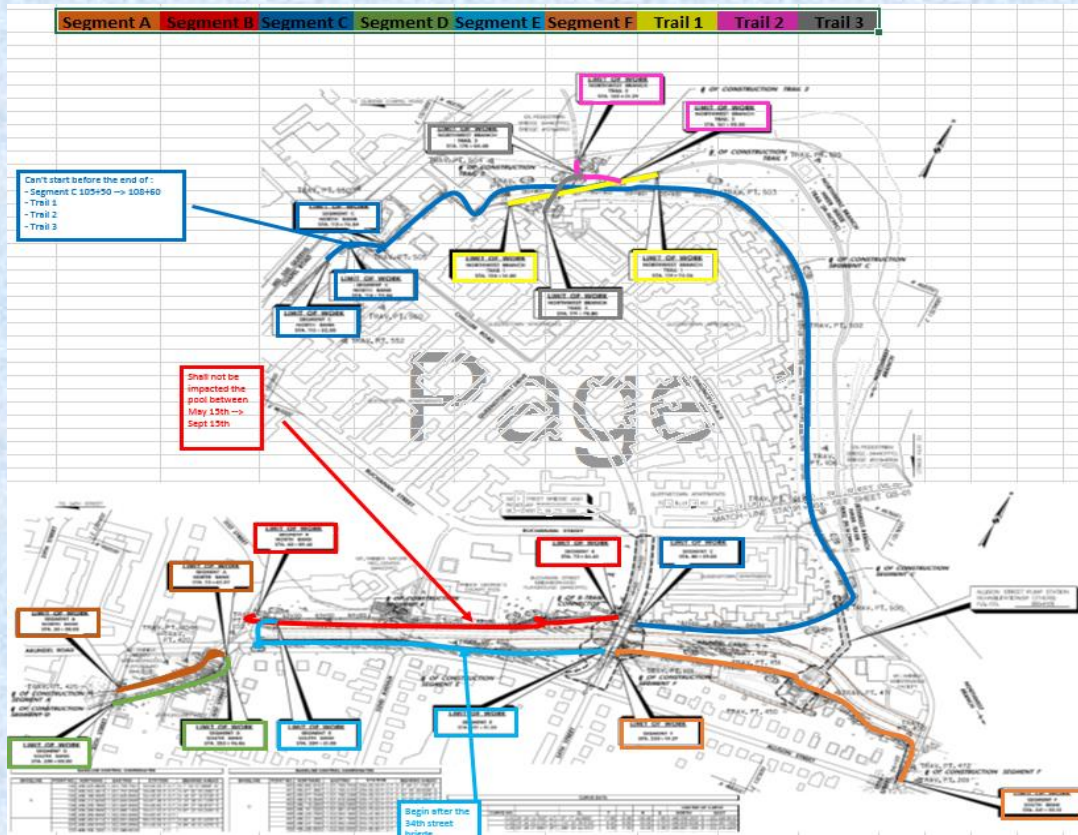


Technopref
INDUSTRIES - CONSTRUCTION

A company of Group demathieu bard



TB17-003 : ALLISON STREET FLOOD CONTROL PROJECT LEVEL REHABILITATION AND 34TH STREET BRIDGE REPLACEMENT





Angela D. Alsobrooks
County Executive

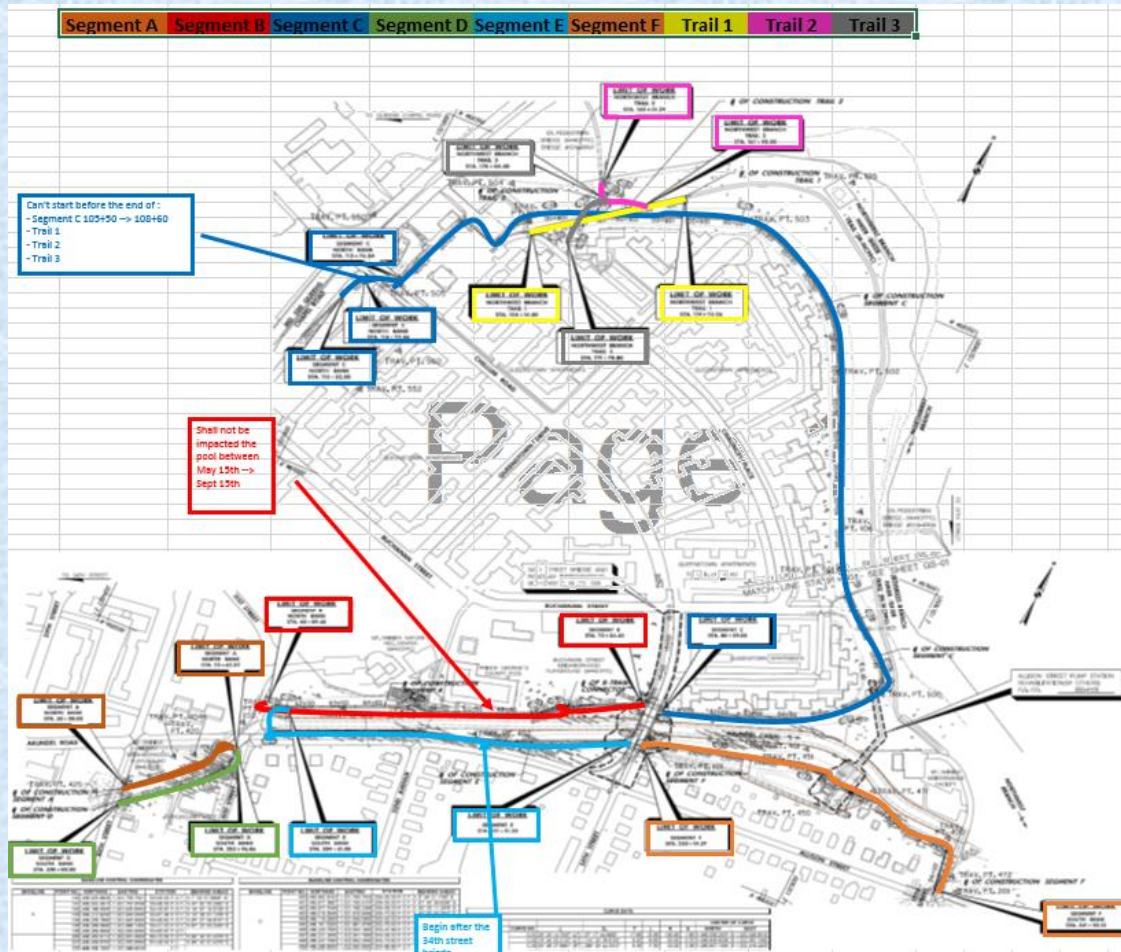


Joseph P. Gill
Director



Terry Bellamy
Director

ALLISON STREET FLOOD CONTROL PROJECT LEVEE REHABILITATION AND 34TH STREET BRIDGE REPLACEMENT





Angela D. Alsobrooks
County Executive

Joseph P. Gill
Director

Terry Bellamy
Director

Levee Raising Requirements





Raise Levee Embankments

Joseph P. Gill
Director

Terry Bellamy
Director

Angela D. Alsobrooks
County Executive





Angela D. Alsobrooks
County Executive

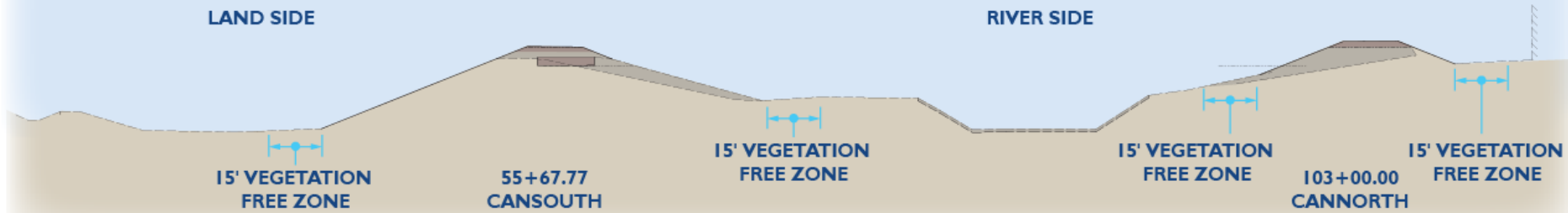


Joseph P. Gill
Director



Terry Bellamy
Director

Raise Levee Embankments



**Where required, embankments
will be raised 0.5 feet to 3 feet**

Raise Levee Walls

Segment E



Segment B



Segment A



Segment F





Angela D. Alsobrooks
County Executive



Joseph P. Gill
Director

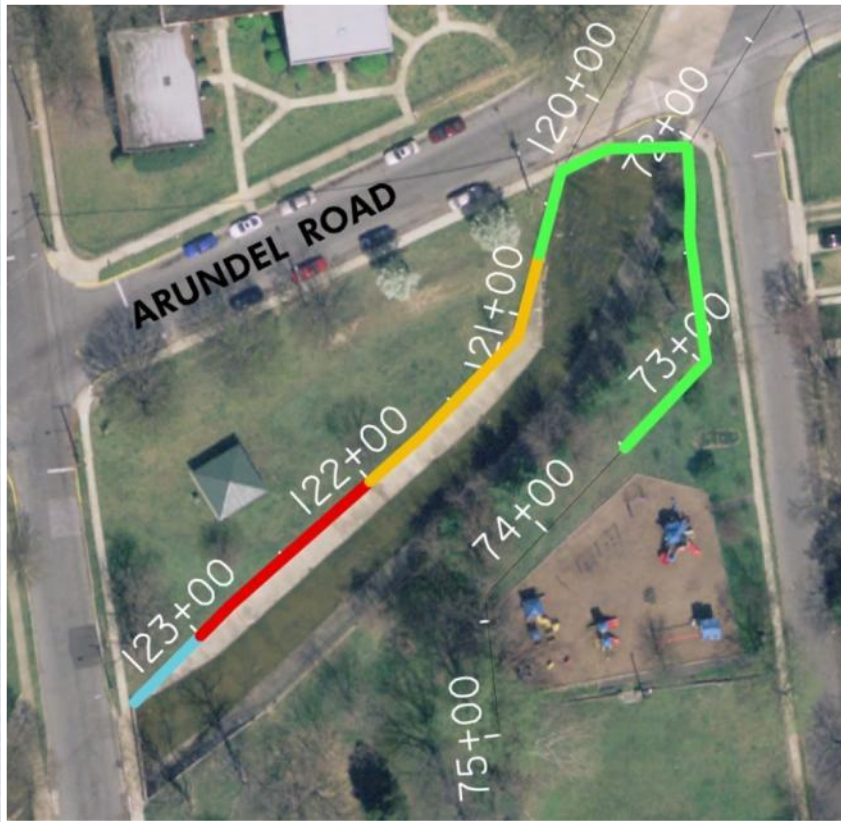


Terry Bellamy
Director

Extend Levee – 31st Street

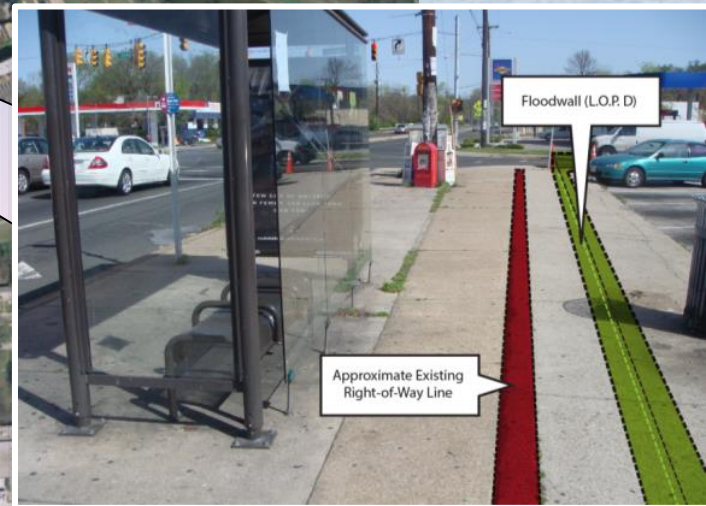
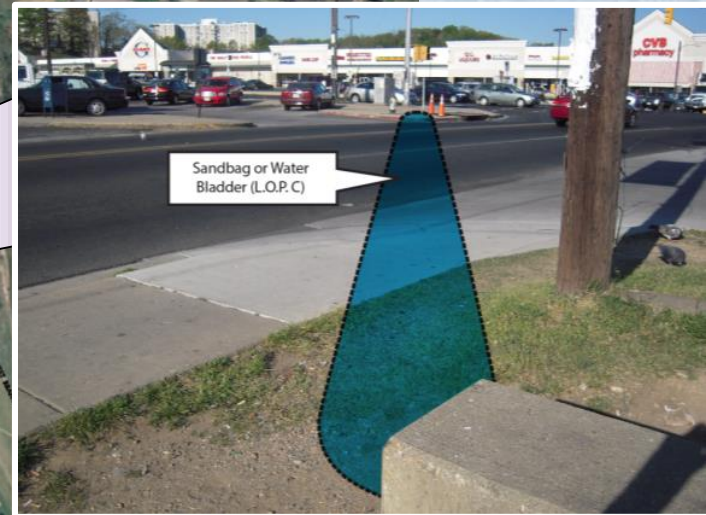
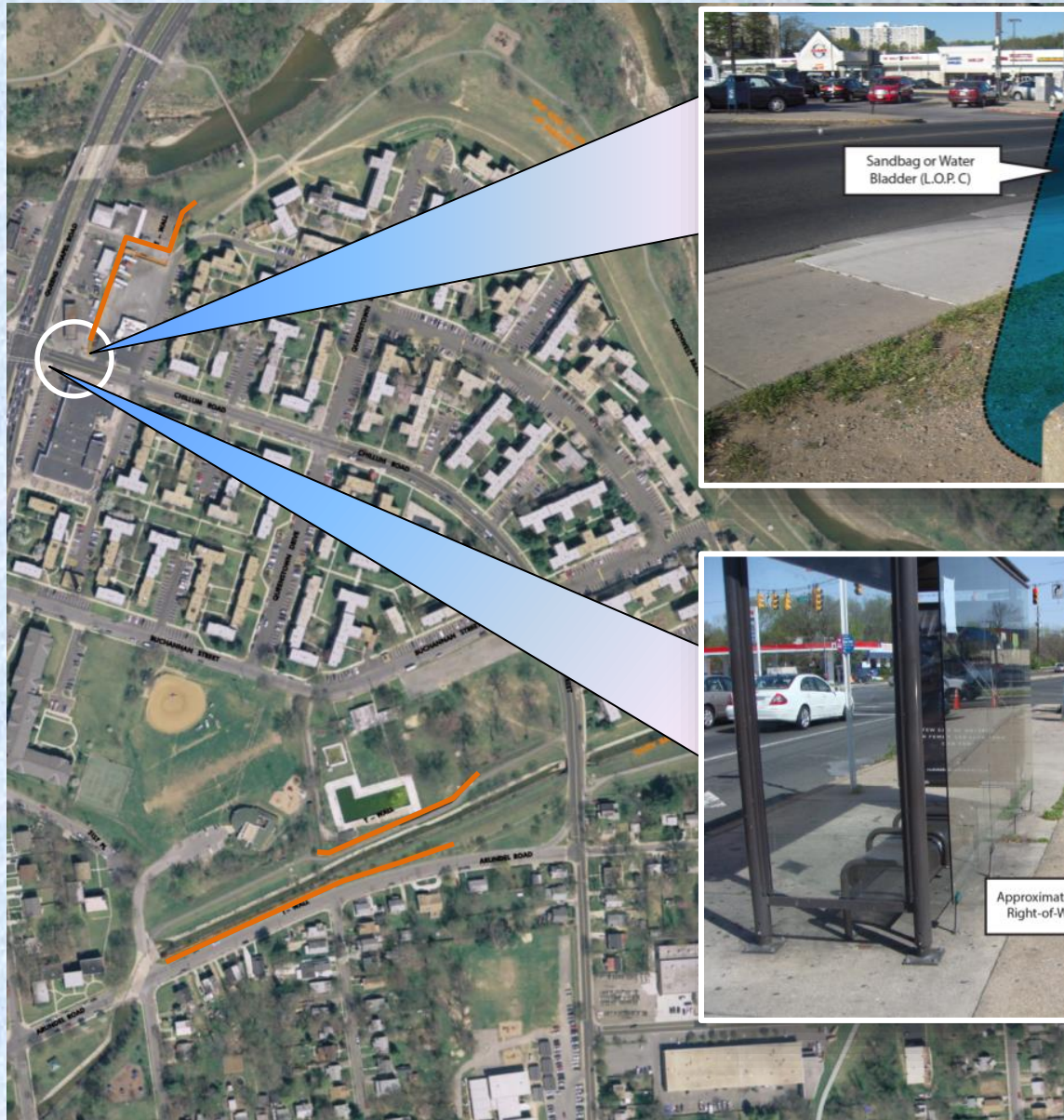
Segment A

North Bank



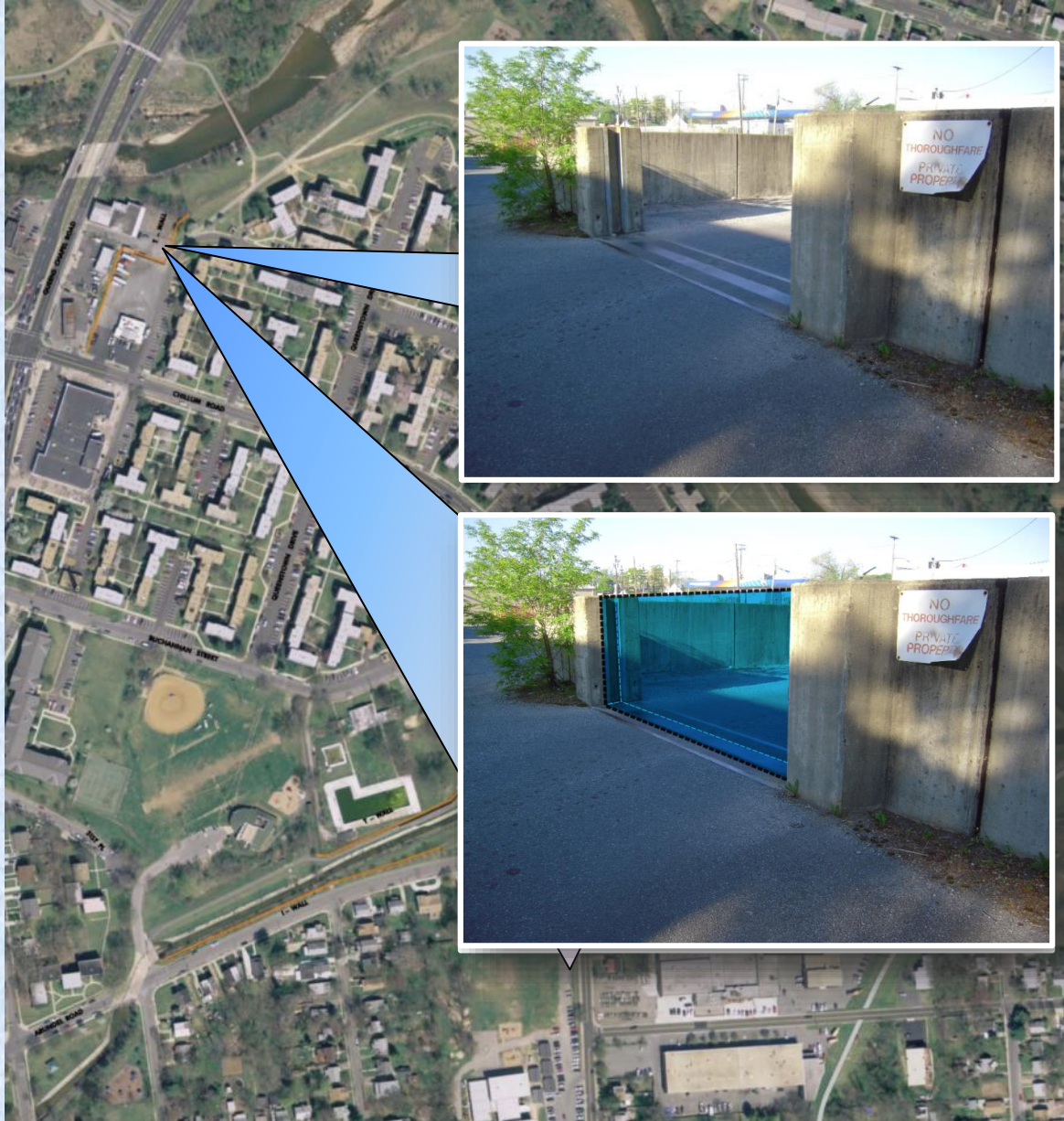
Extend Levee – Chillum Road

Segment C



Additional Elements/Considerations

Segment C



- Wall to be closed
- County will work with the community, town, property owner, and emergency services on the closure



Angela D. Alsobrooks
County Executive

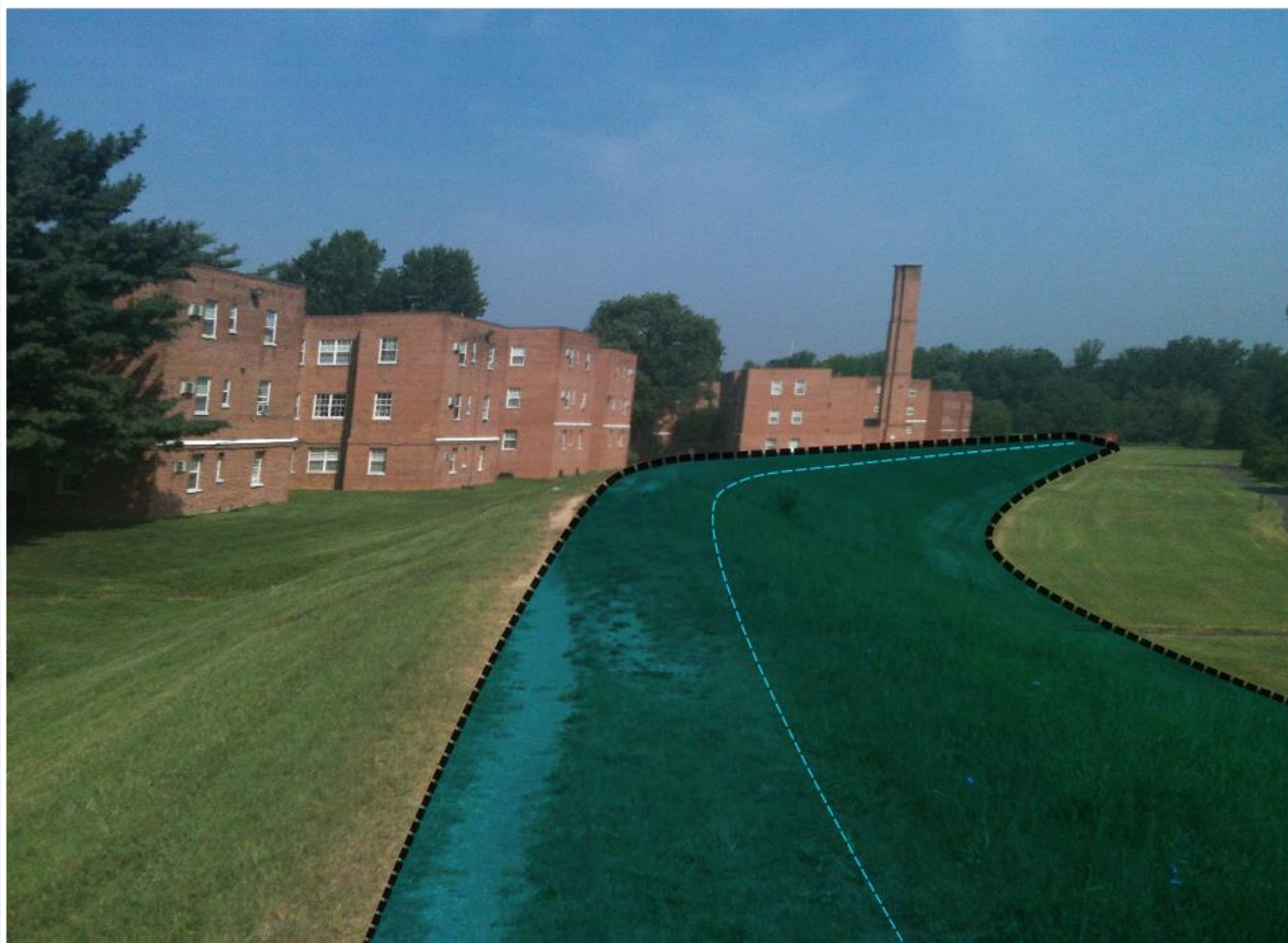


Terry Bellamy
Director

Raise Levee Embankments

Joseph P. Gill
Director

Segment C





Angela D. Alsobrooks
County Executive



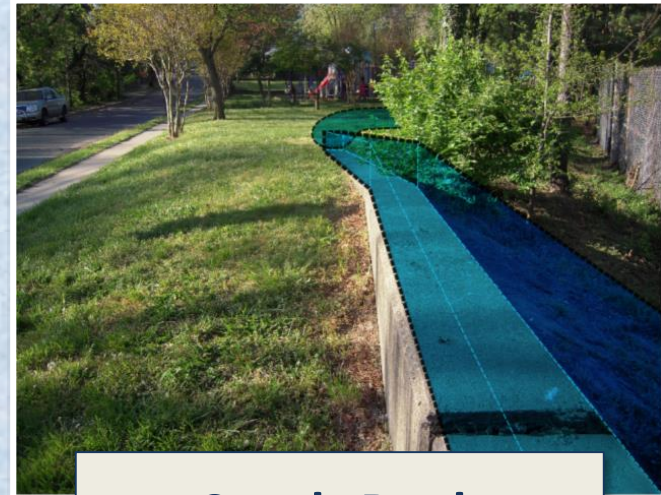
Joseph P. Gill
Director



Terry Bellamy
Director

Extend Levee – 31st Street

Segment D



South Bank





Angela D. Alsobrooks
County Executive



Joseph P. Gill
Director



Terry Bellamy
Director

Raise Levee Walls

Segment F

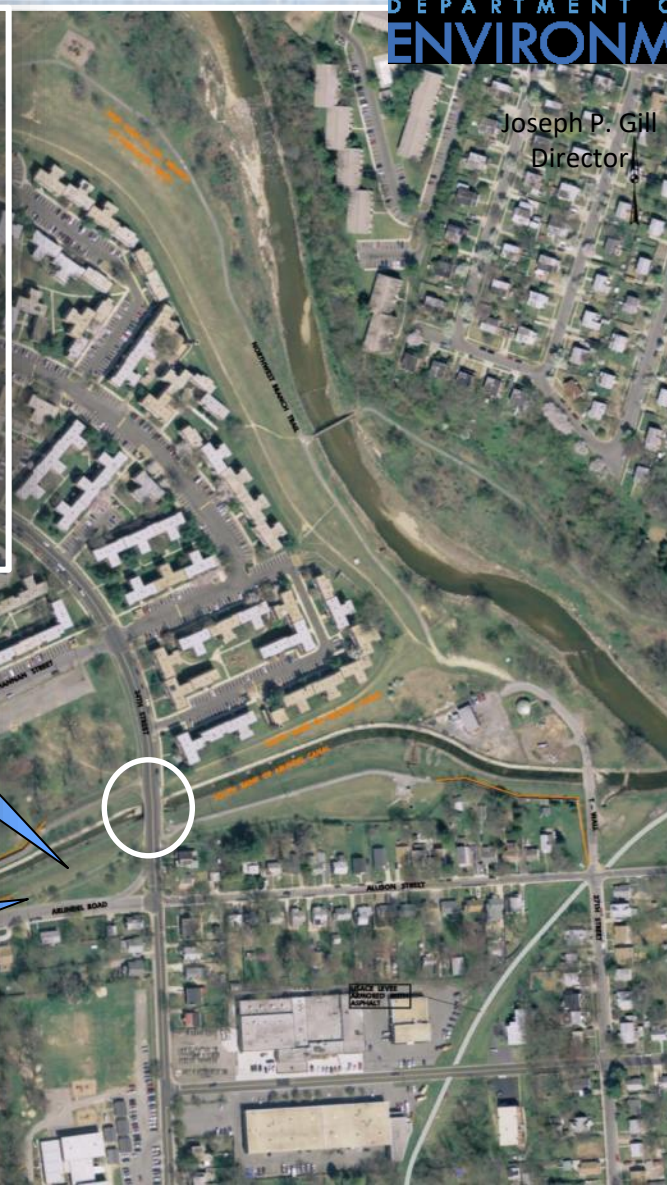




Replace 34th Street Bridge



Angela D. Alsobrooks
County Executive



Joseph P. Gill
Director

Terry Bellamy
Director





Angela D. Alsobrooks
County Executive

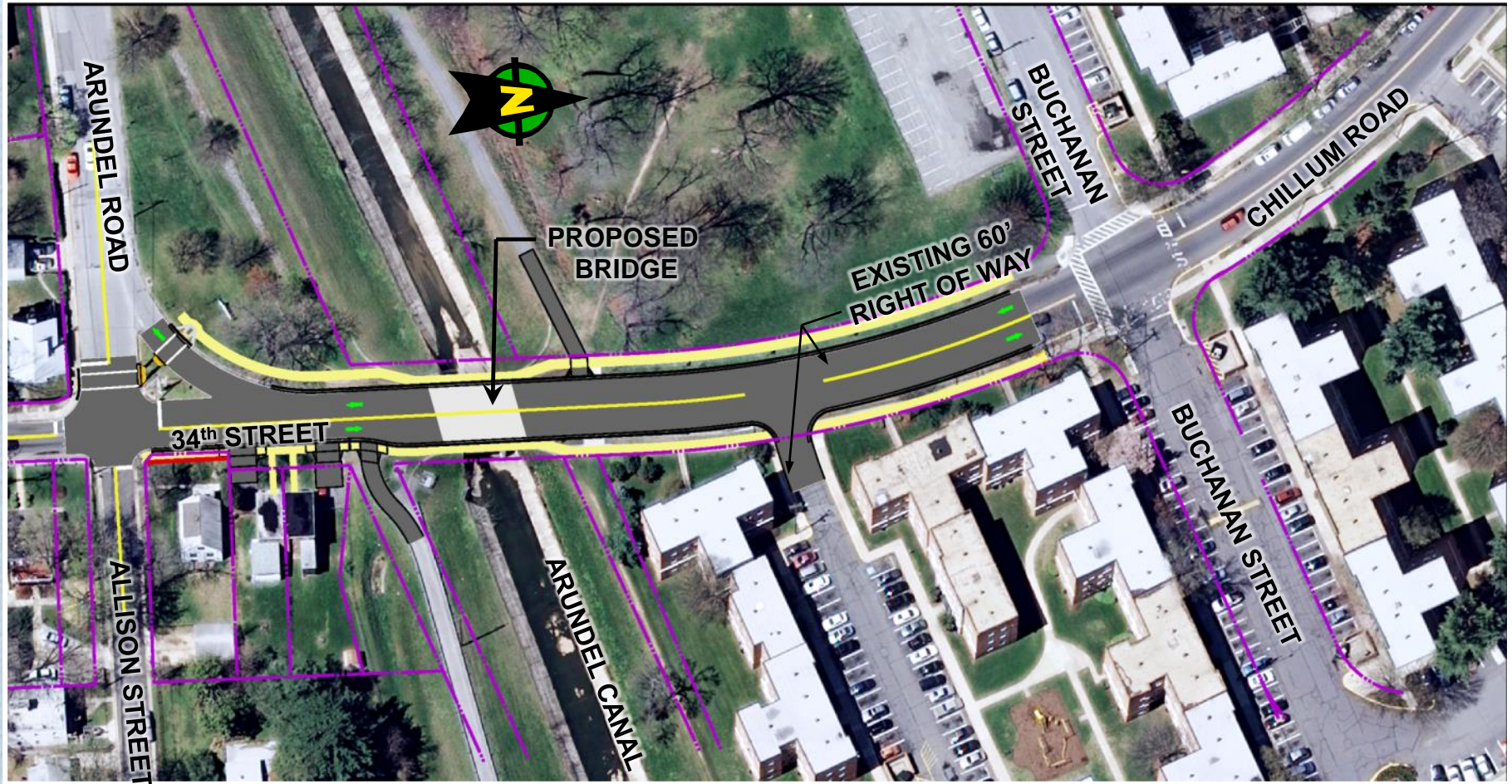


Joseph P. Gill
Director



Terry Bellamy
Director

Replace 34th Street Bridge Proposed Improvements





Angela D. Alsobrooks
County Executive

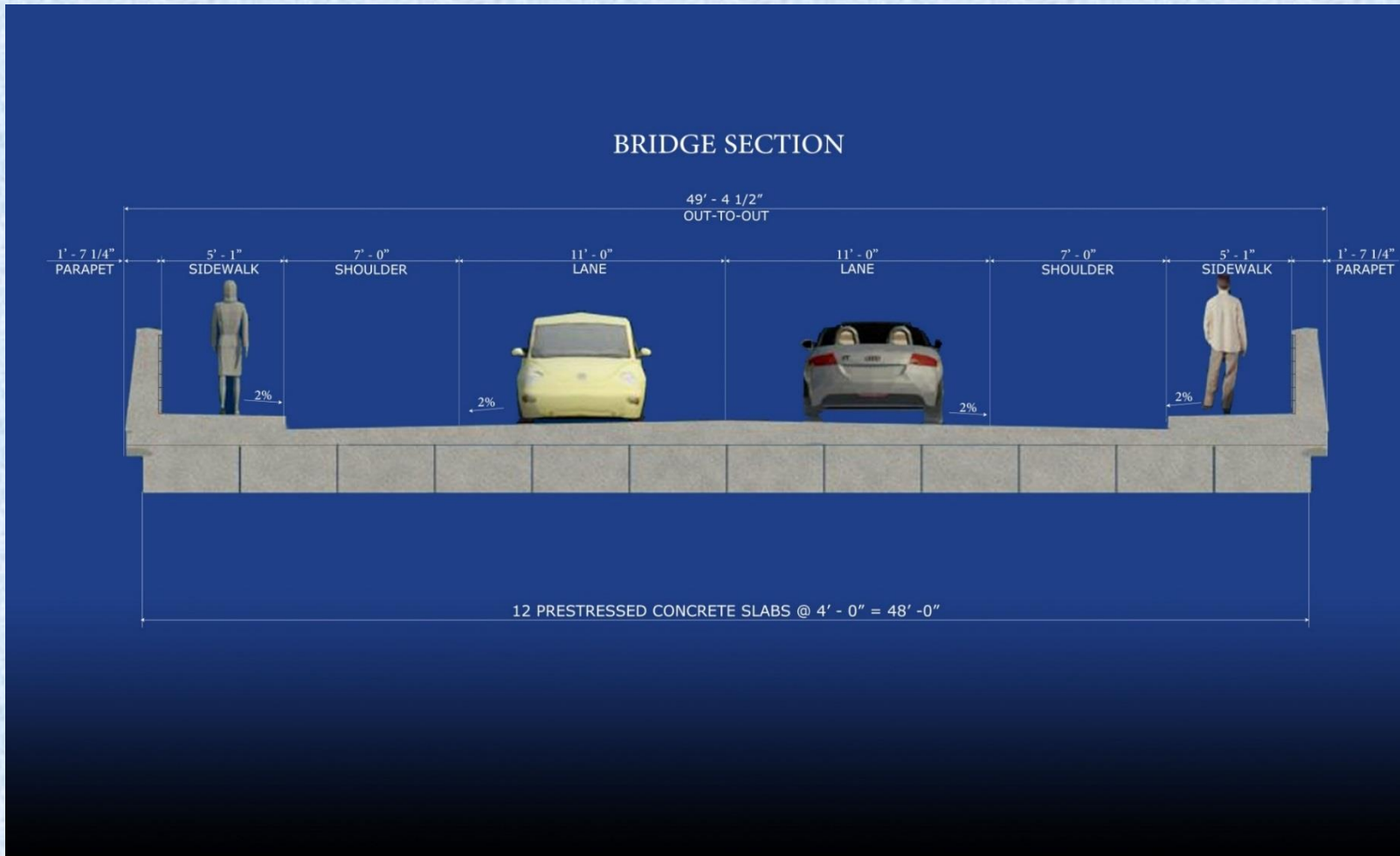


Joseph P. Gill
Director

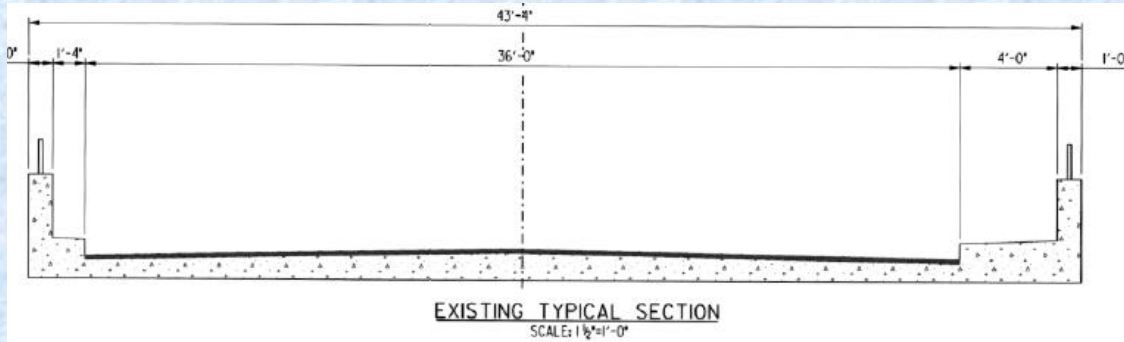


Terry Bellamy
Director

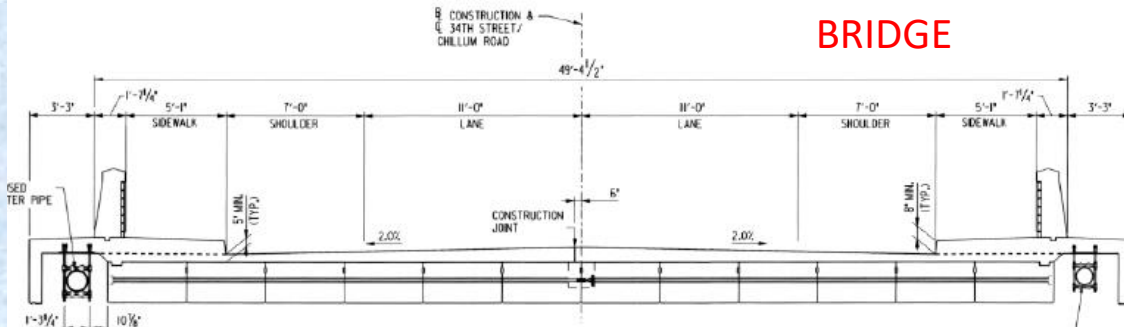
Replace 34th Street Bridge



TB17-003 : ALLISON STREET FLOOD CONTROL PROJECT LEVEE REHABILITATION AND 34TH STREET BRIDGE REPLACEMENT



EXISTING BRIDGE



NEW BRIDGE

1. General presentation

2. Technical topics

3. Pricing topics



Angela D. Alsobrooks
County Executive



Joseph P. Gill
Director

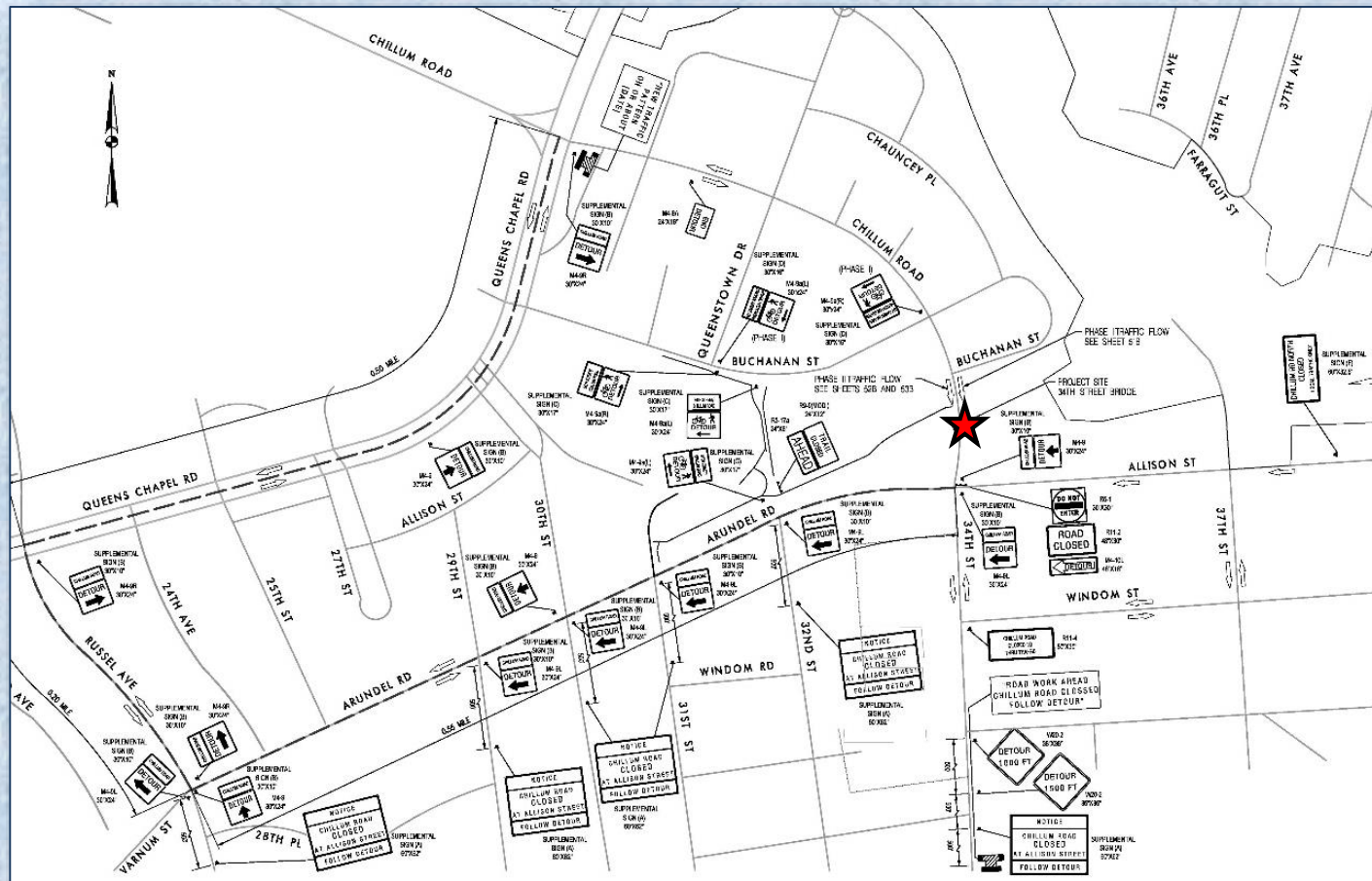


Terry Bellamy
Director

Replace 34th Street Bridge

Traffic Impacts

- South Bound Traffic will be maintained during the construction.
- North Bound Traffic will be detoured during construction.
- Pedestrian access will be maintained.





Angela D. Alsobrooks
County Executive



Joseph P. Gill
Director



Terry Bellamy
Director

Additional Elements/Considerations

Metro Pedestrian Access

- Current dirt pathways to be consolidated
- County has worked with the community, town, M-NCPPC and Queenstown Apartments and has developed access plan





Angela D. Alsobrooks
County Executive



Joseph P. Gill
Director



Terry Bellamy
Director

Vegetation and Structure Free Zone

- **44.CFR 65.10 and USACE require no structures (poles, barricades, guardrail post) or trees/vegetation within 15 feet of levee embankment or levee wall**
- **Tree removal will be required**
- **County will provide tree replacement and will work with Communities for tree planting locations**
- **Town meeting scheduled March 5th**





Angela D. Alsobrooks
County Executive

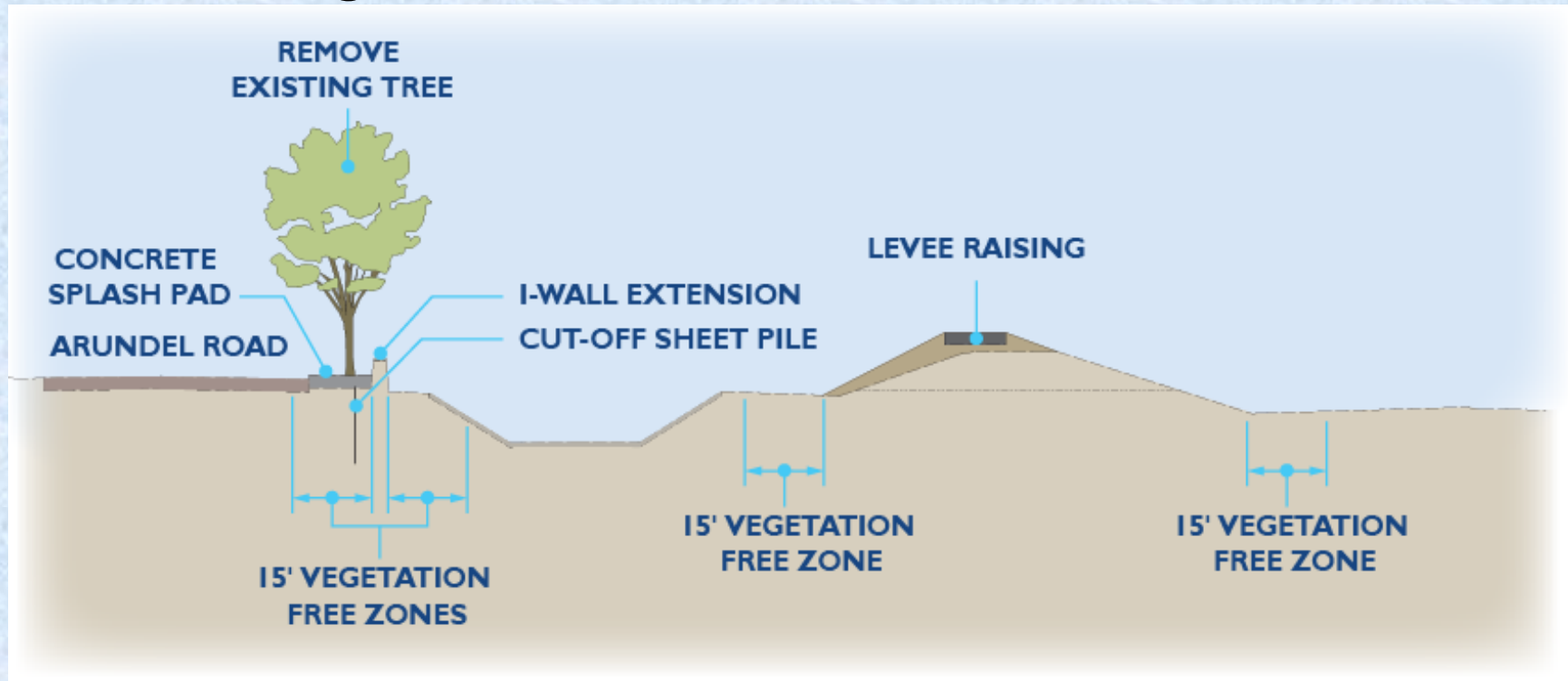


Joseph P. Gill
Director



Terry Bellamy
Director

Vegetation and Structure Free Zone





Angela D. Alsobrooks
County Executive



Joseph P. Gill
Director



Terry Bellamy
Director

Project Schedule

Project	Construction Start	Duration	Estimated Completion Date
Allison Street Levee Flood Control Project & 34 th Street Bridge Replacement	June 2019	24 months	Summer/Fall 2021

TB17-003 : ALLISON STREET FLOOD CONTROL PROJECT LEVEE REHABILITATION AND 34TH STREET BRIDGE REPLACEMENT

• Approximate durations of Levee and Bridge Construction Activities:

- | | |
|--|-----------|
| 1. Segment A | 9 months |
| 2. Segment B | 8 months |
| 1. Not allowed to start until after Sept. 15- Pool Closure | |
| 3. Segment C | 13 months |
| 4. Segment D | 6 months |
| 5. Segment E | 6 months |
| 6. Segment F | 6 months |

1. Not allowed to start until after Bridge is 100% complete.

7. Bridge

- | | |
|--|-----------|
| 1. Based on Relocation of overhead wires and poles by PEPCO | |
| a. Phase 1 | 12 Months |
| Switch traffic to proceed SB in Phase 1 completed bridge portion . | |
| b. Phase 2 | 12 Months |



Angela D. Alsobrooks
County Executive



Joseph P. Gill
Director



Terry Bellamy
Director

Public Involvement

- **County will provide website updates and continue to coordinate with stakeholders:**
 - City of Mount Rainier
 - Town of Brentwood
 - M-NCPPC website
 - Other Community Stakeholders

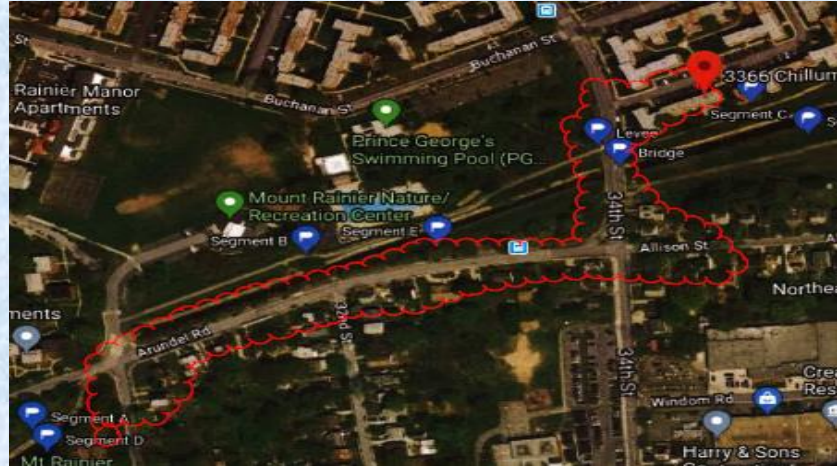
Additional Items of Discussion

- **Citizens will have limited parking on Arundel Road**
- **Preconstruction survey of properties impacted**
- **Pedestrian access along 34th Street bridge and Levee Segment C**
- **Coordination with school**



ALLISON STREET FLOOD CONTROL PROJECT LEVEE REHABILITATION AND 34TH STREET BRIDGE REPLACEMENT

Angela D. Alsobrooks
County Executive



Addresses for Pre Construction Survey to be Performed

Unit Address	Notes
4513/4517 31st Street	
3101/3103 Arundel Road	
3105/3107 Arundel Road	
3109/3111 Arundel Road	
3115 Arundel Road	
4530 32nd Street	
3201 Arundel Road	
3203 Arundel Road	
3205 Arundel Road	
3207 Arundel Road	
3209 Arundel Road	Empty Lot
4603/4605 34th Street	
4601 34th Street	

4517 30th Street	
4532 34th St.	
4531 34th St.	
3401 Allison St.	
3400 Allison St.	
3370 Chillum Rd	Apartment Building (Bid Item 1025)
3368 Chillum Rd	
3366 Chillum Rd	



Angela D. Alsobrooks
County Executive



Joseph P. Gill
Director



Terry Bellamy
Director

Project Contact Information

Dwight Joseph

Chief, Construction Division

Department of Public Works and Transportation
(DPW&T)

Office of Engineering and Project Management
9400 Peppercorn Place, Suite 400

Largo, Maryland 20774

Phone: (301) 883-5642

E-mail: djoseph@co.pg.md.us



Angela D. Alsobrooks
County Executive



Joseph P. Gill
Director



Terry Bellamy
Director

Questions and Concerns