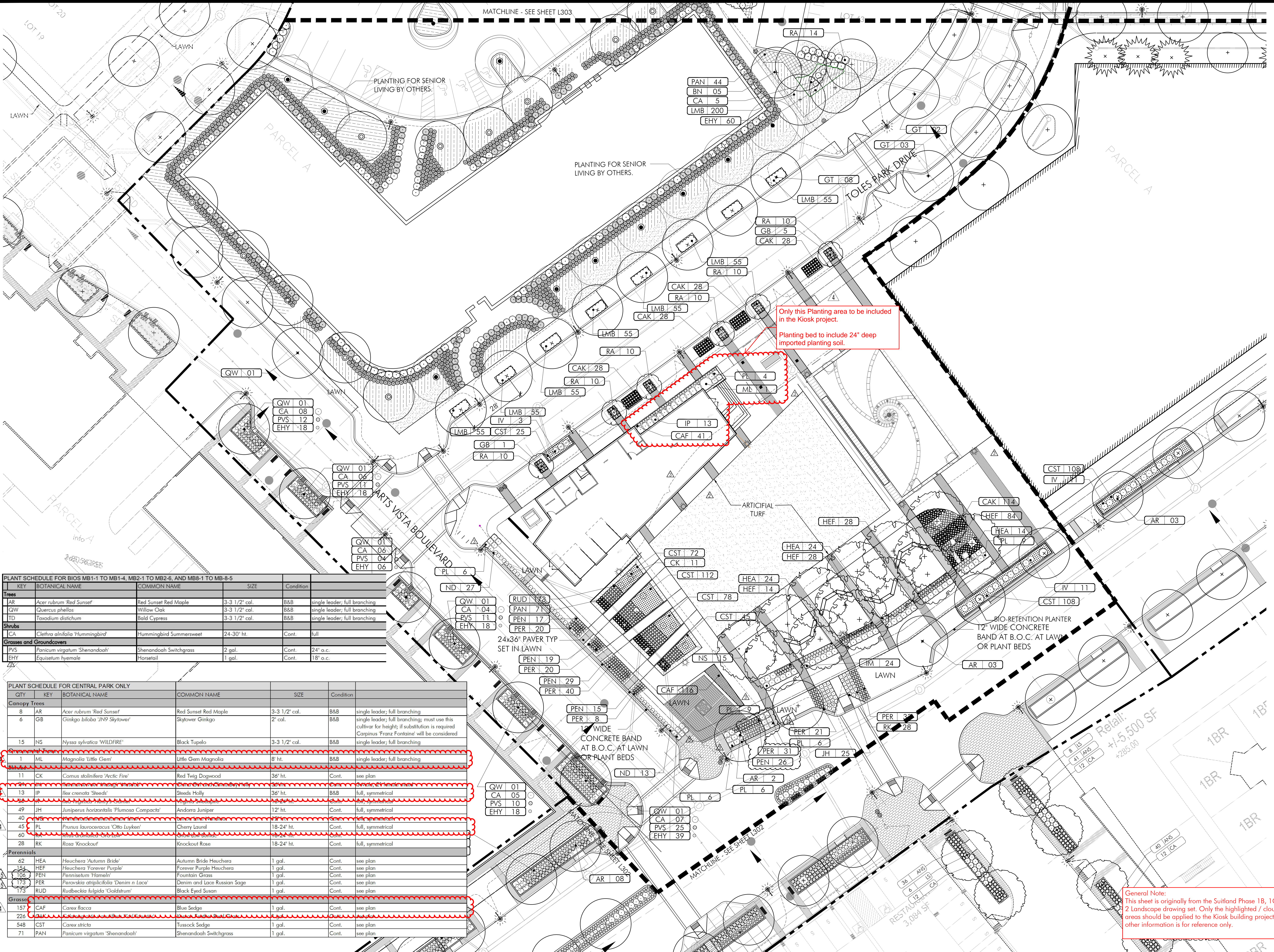


REVISIONS	
1	CENTRAL PARK REVISION #6 04/10/20
2	CENTRAL PARK REVISION #7 04/23/20
3	CENTRAL PARK REVISION #10 09/01/20
4	CENTRAL PARK REVISION 04/12/21
5	CENTRAL PARK COORD. SET 06/23/21
6	STREET TREES REVISION 08/12/21
7	CENTRAL PARK REVISION 03/29/22
8	KIOSK REVISION 1 - RFI RESPONSE 08/14/23

PLANTING PLAN

ORIGINAL ISSUE DATE
07/31/17
DESIGNED BY
DC, SF
DRAWN BY
YZ, YJ
CHECKED BY
DC

SCALE 1"=20'-0"
0 10 20 40 FEET



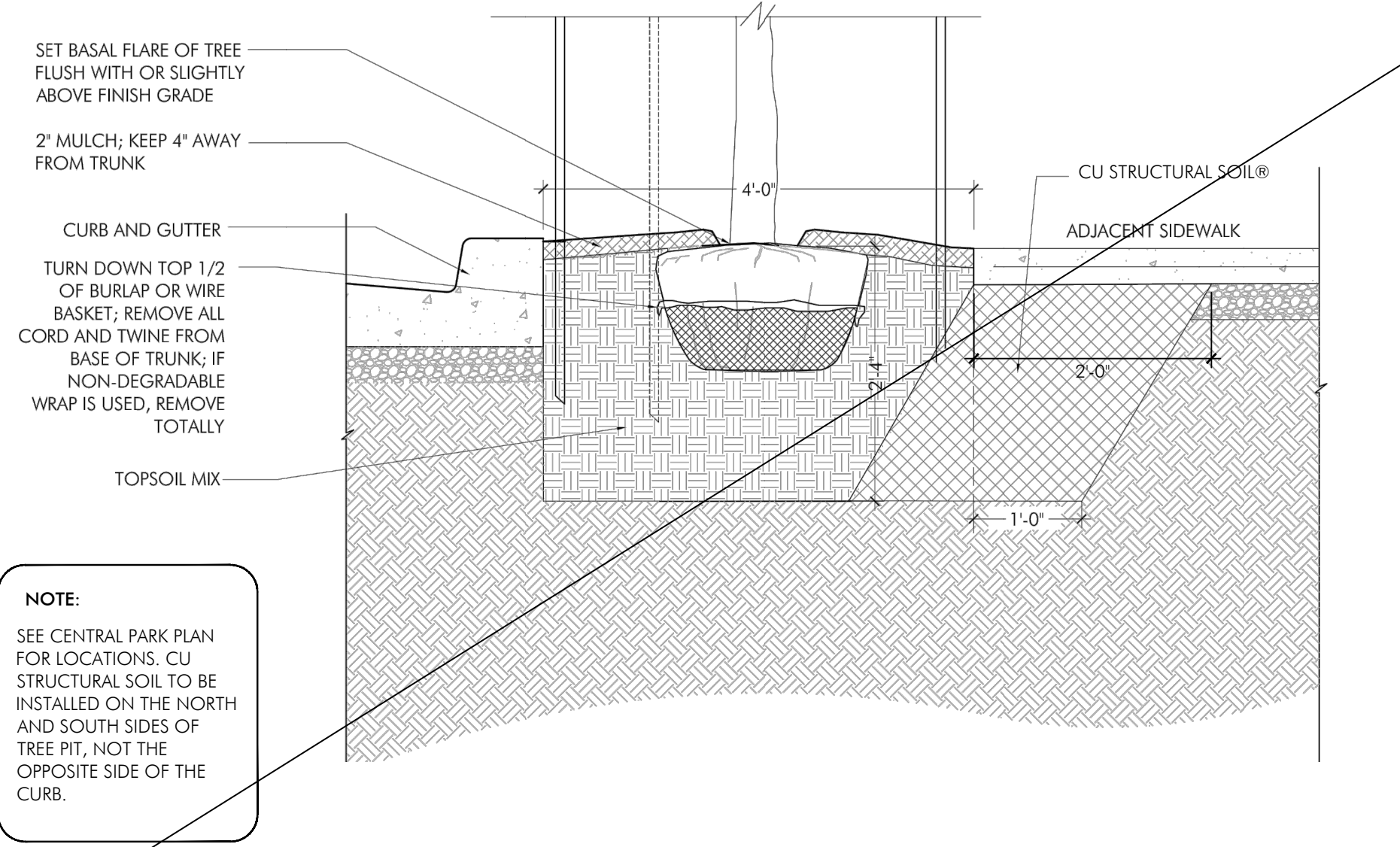
PLANT SCHEDULE FOR BIOS MB1-1 TO MB1-4, MB2-1 TO MB2-6, AND MB8-1 TO MB8-5

KEY	BOTANICAL NAME	COMMON NAME	SIZE	Condition
Trees				
AR	<i>Acer rubrum</i> 'Red Sunset'	Red Sunset Red Maple	3-3 1/2' cal.	B&B single leader; full branching
QW	<i>Quercus phellos</i>	Willow Oak	3-3 1/2' cal.	B&B single leader; full branching
TW	<i>Taxodium distichum</i>	Bald Cypress	3-3 1/2' cal.	B&B single leader; full branching
Shrubs				
CA	<i>Clethra alnifolia</i> 'Hummingbird'	Hummingbird Summersweet	24-30" ht.	Cont. full
Grasses and Groundcovers				
PVS	<i>Panicum virgatum</i> 'Shenandoah'	Shenandoah Switchgrass	2 gal.	Cont. 24" o.c.
EHY	<i>Equisetum hyemale</i>	Horsetail	1 gal.	Cont. 18" o.c.

PLANT SCHEDULE FOR CENTRAL PARK ONLY

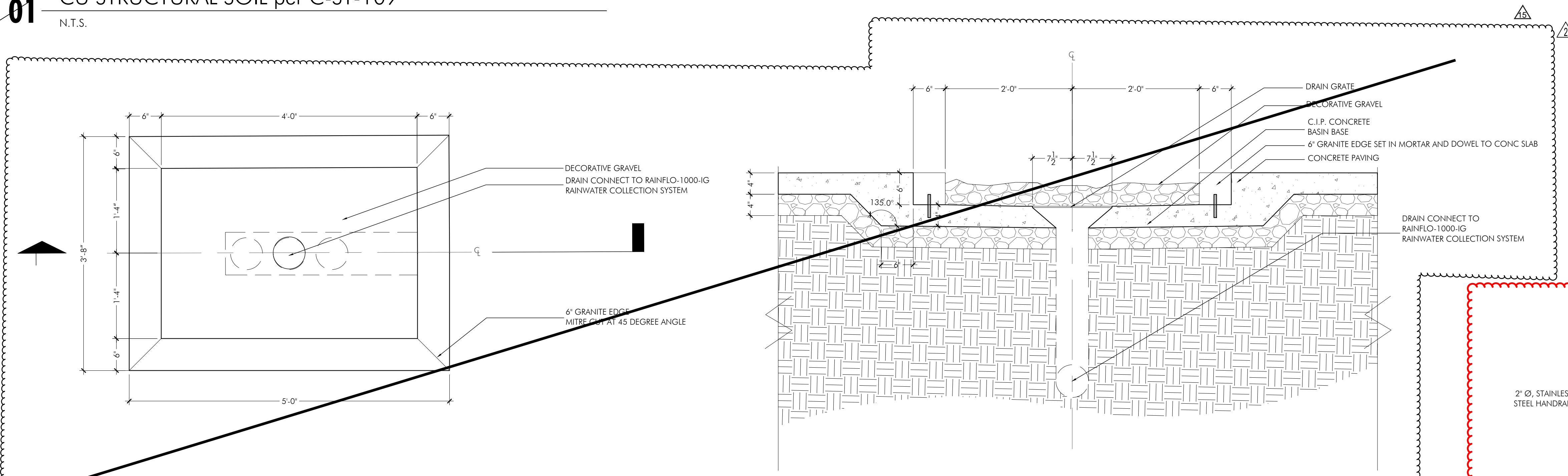
QTY	KEY	BOTANICAL NAME	COMMON NAME	SIZE	Condition
Canopy Trees					
8	AR	<i>Acer rubrum</i> 'Red Sunset'	Red Sunset Red Maple	3-3 1/2' cal.	B&B single leader; full branching
6	GB	<i>Ginkgo biloba</i> 'JN9 Skytower'	Skytower Ginkgo	2' cal.	B&B single leader; full branching; must use this cultivar for height; if substitution is required <i>Carpinus 'Franz Fontaine'</i> will be considered
15	NS	<i>Nyssa sylvatica</i> 'WILDFIRE'	Black Tupelo	3-3 1/2' cal.	B&B single leader; full branching
1	ML	<i>Magnolia 'Little Gem'</i>	Little Gem Magnolia	8' ht.	B&B single leader; full branching
11	CK	<i>Camus stolonifera</i> 'Arctic Fire'	Red Twig Dogwood	36" ht.	Cont. see plan
13	IP	<i>Ilex cornata</i> 'Steeds'	Steeds Holly	36" ht.	B&B full, symmetrical
49	JH	<i>Juniperus horizontalis</i> 'Plumosa Compacta'	Andorra Juniper	12' ht.	Cont. full, symmetrical
40	PL	<i>Prunus laurocerasus</i> 'Otto Luyken'	Cherry Laurel	18-24" ht.	Cont. full, symmetrical
60	RK	<i>Rosa 'Knockout'</i>	Knockout Rose	18-24" ht.	Cont. full, symmetrical
Perennials					
62	HEA	<i>Heuchera 'Autumn Bride'</i>	Autumn Bride Heuchera	1 gal.	Cont. see plan
106	HEF	<i>Heuchera 'Forever Purple'</i>	Forever Purple Heuchera	1 gal.	Cont. see plan
173	PER	<i>Pennisetum 'Hawaii'</i>	Fountain Grass	1 gal.	Cont. see plan
173	PER	<i>Paroskia alpicifolia</i> 'Danin n Lace'	Danin and Lace Russian Sage	1 gal.	Cont. see plan
173	RUD	<i>Rudbeckia fulgida</i> 'Goldstrum'	Black Eyed Susan	1 gal.	Cont. see plan
Grasses					
157	CAF	<i>Carex flacca</i>	Blue Sedge	1 gal.	Cont. see plan
226	CST	<i>Carex stricta</i>	Tussock Sedge	1 gal.	Cont. see plan
548	PAN	<i>Panicum virgatum</i> 'Shenandoah'	Shenandoah Switchgrass	1 gal.	Cont. see plan

General Note:
This sheet is originally from the Suitland Phase 1B, 1C and 2 Landscape drawing set. Only the highlighted / clouded areas should be applied to the Kiosk building project. All other information is for reference only.

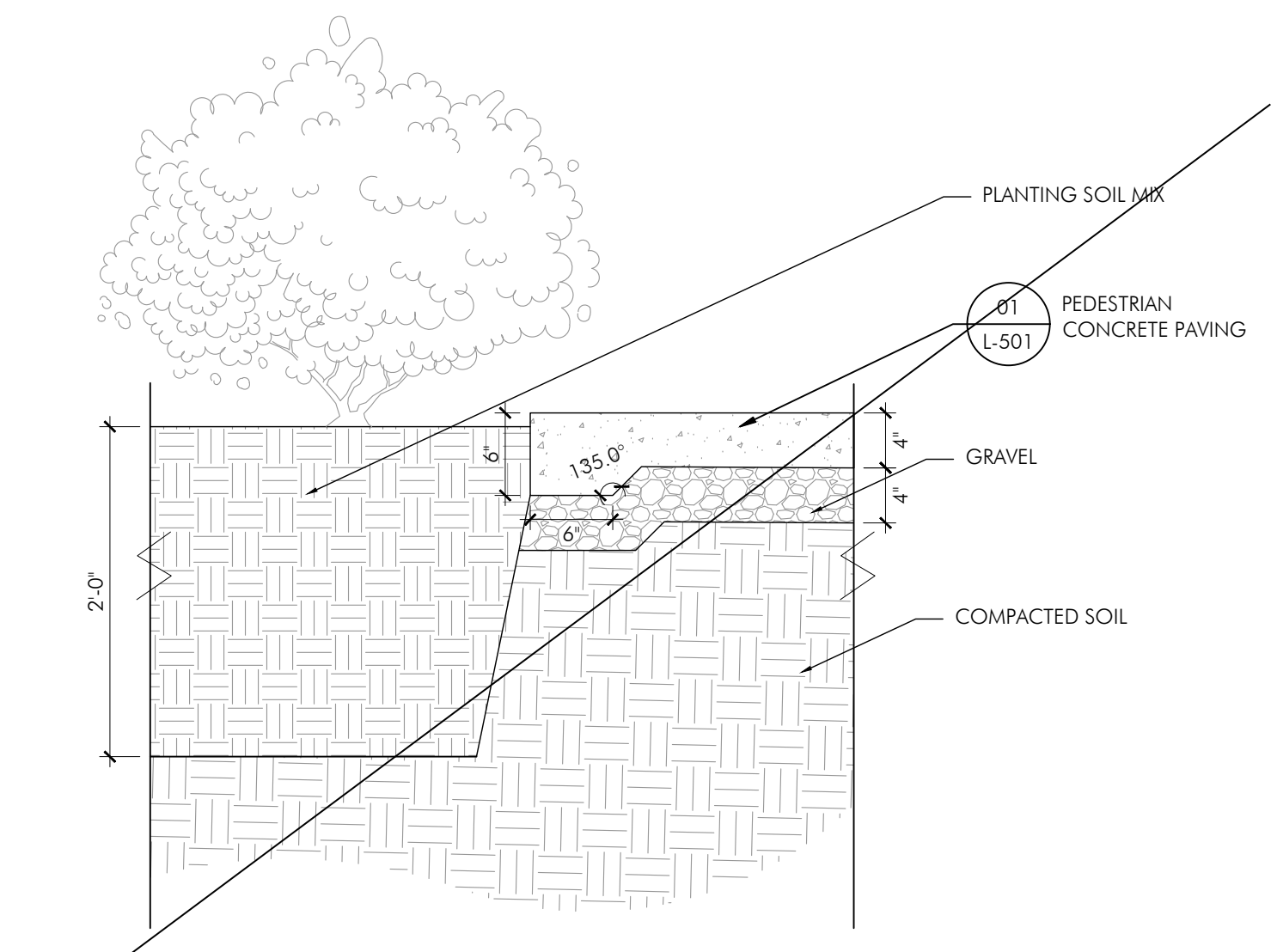


NOTE:
SEE CENTRAL PARK PLAN FOR LOCATIONS. CU STRUCTURAL SOIL TO BE INSTALLED ON THE NORTH AND SOUTH SIDES OF TREE PIT, NOT THE OPPOSITE SIDE OF THE CURB.

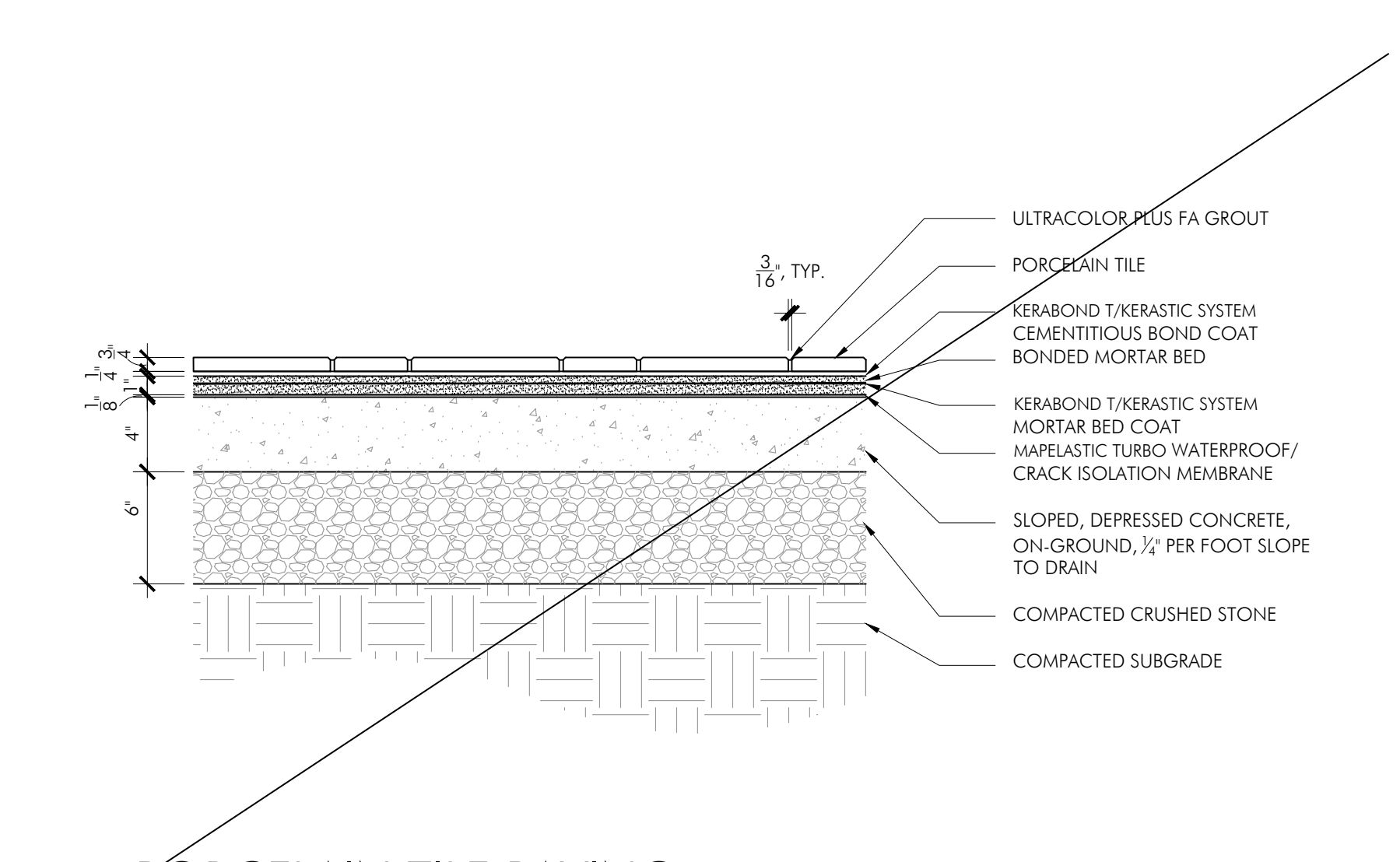
01 CU STRUCTURAL SOIL per C-ST-109
N.T.S.



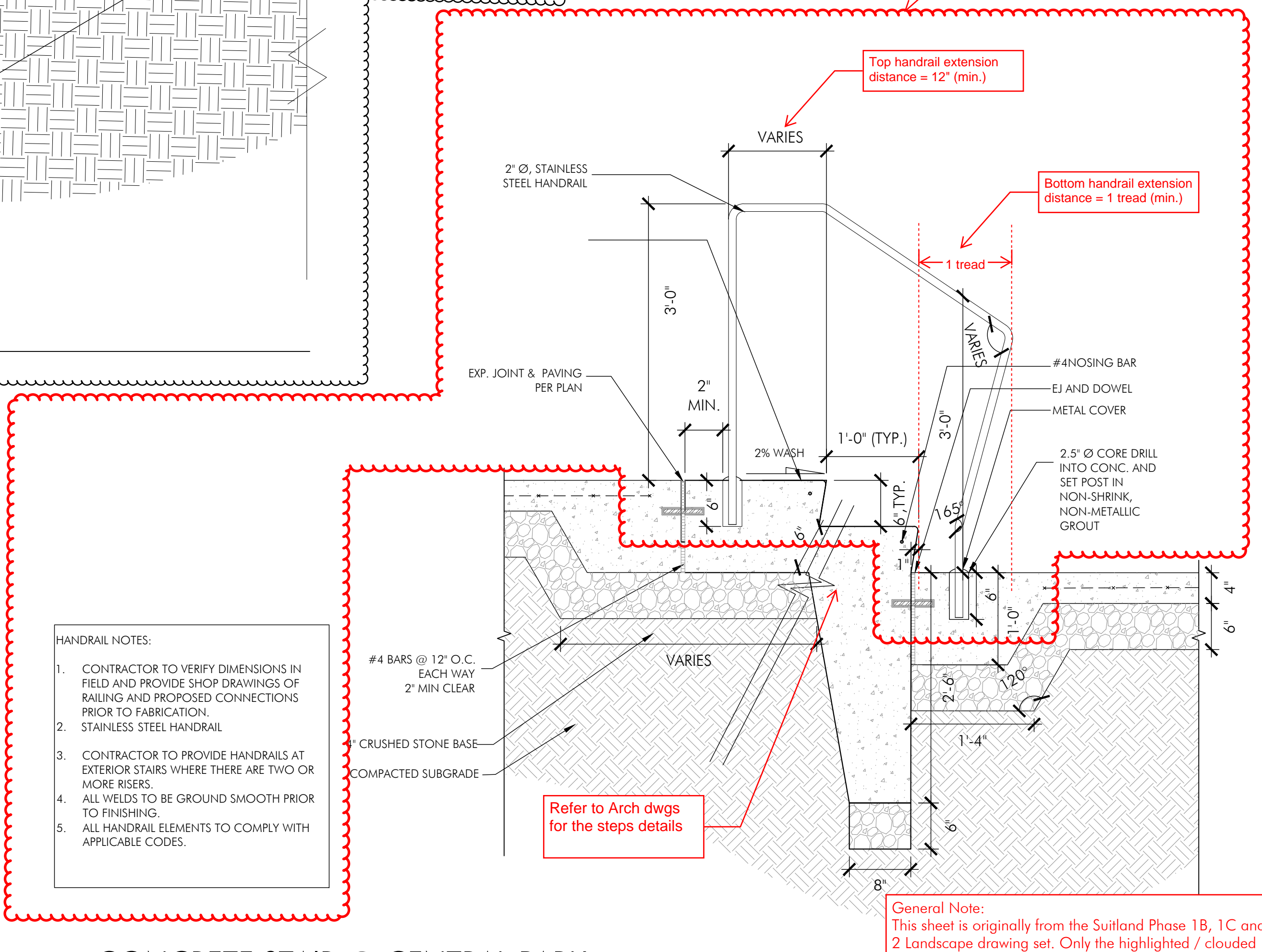
02 RAIN CHAIN BASIN @ CENTRAL PARK NOT USED
1" = 1'-0"



05 CENTRAL PARK PLANTING BED DETAIL, TYP.
1" = 1'-0"



06 PORCELAIN TILE PAVING
1 1/2" = 1'-0"



HANDRAIL NOTES:
1. CONTRACTOR TO VERIFY DIMENSIONS IN FIELD AND PROVIDE SHOP DRAWINGS OF RAILING AND PROPOSED CONNECTIONS PRIOR TO FABRICATION.
2. STAINLESS STEEL HANDRAIL
3. CONTRACTOR TO PROVIDE HANDRAILS AT EXTERIOR STAIRS WHERE THERE ARE TWO OR MORE RISERS.
4. ALL WELDS TO BE GROUND SMOOTH PRIOR TO FINISHING.
5. ALL HANDRAIL ELEMENTS TO COMPLY WITH APPLICABLE CODES.

Refer to Arch dwgs for the steps details

General Note:
This sheet is originally from the Suitland Phase 1B, 1C and 2 Landscape drawing set. Only the highlighted / clouded areas should be applied to the Kiosk building project. All other information is for reference only.

REVISIONS

1	CENTRAL PARK REVISION #7	04/23/20
2	CENTRAL PARK REVISION #8	05/22/20
3	CENTRAL PARK REVISION #9	05/22/20
4	CENTRAL PARK COORD. SET	06/30/21
5	CENTRAL PARK REVISION	03/29/22
6	KIOSK REVISION 1 - RFI RESPONSE	08/14/23

CENTRAL PARK
DETAILS

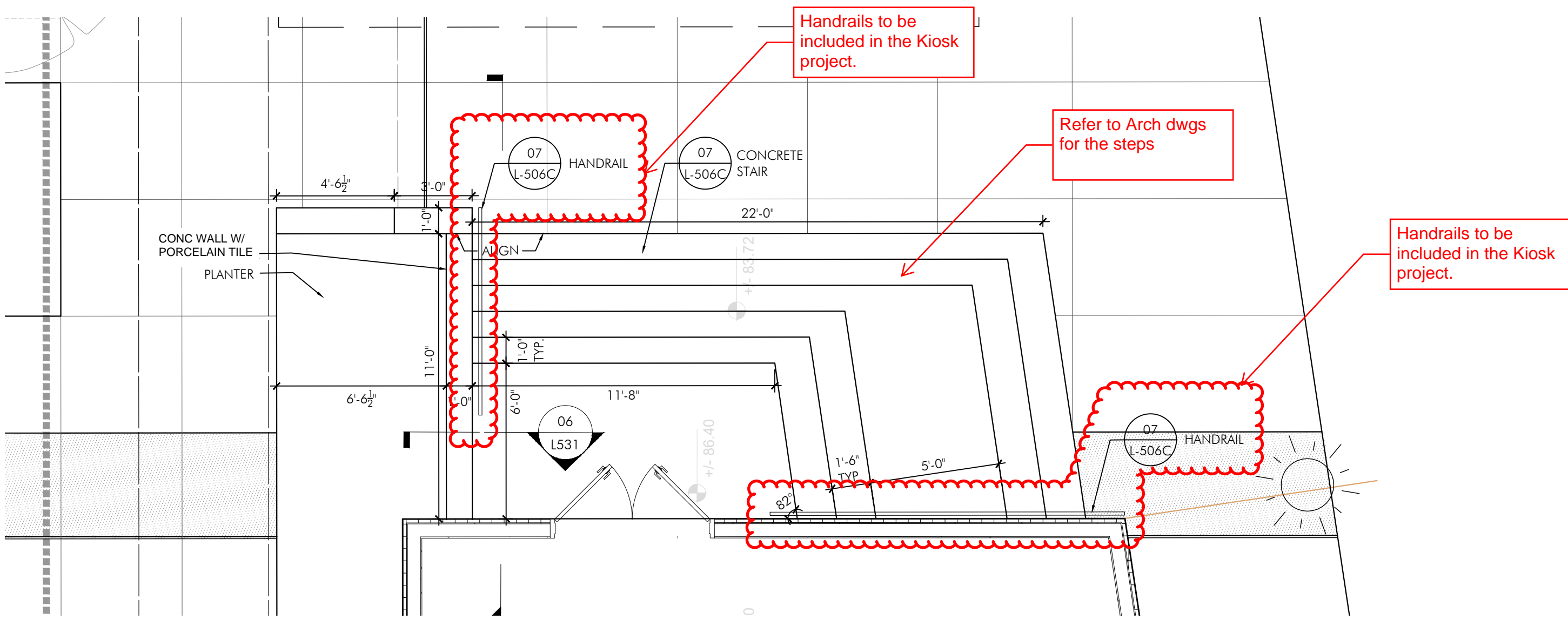
ORIGINAL ISSUE DATE
07/31/17
DESIGNED BY
DC, SF
DRAWN BY
YZ, YJ
CHECKED BY
DC

SCALE AS NOTED
0 1 2 FEET

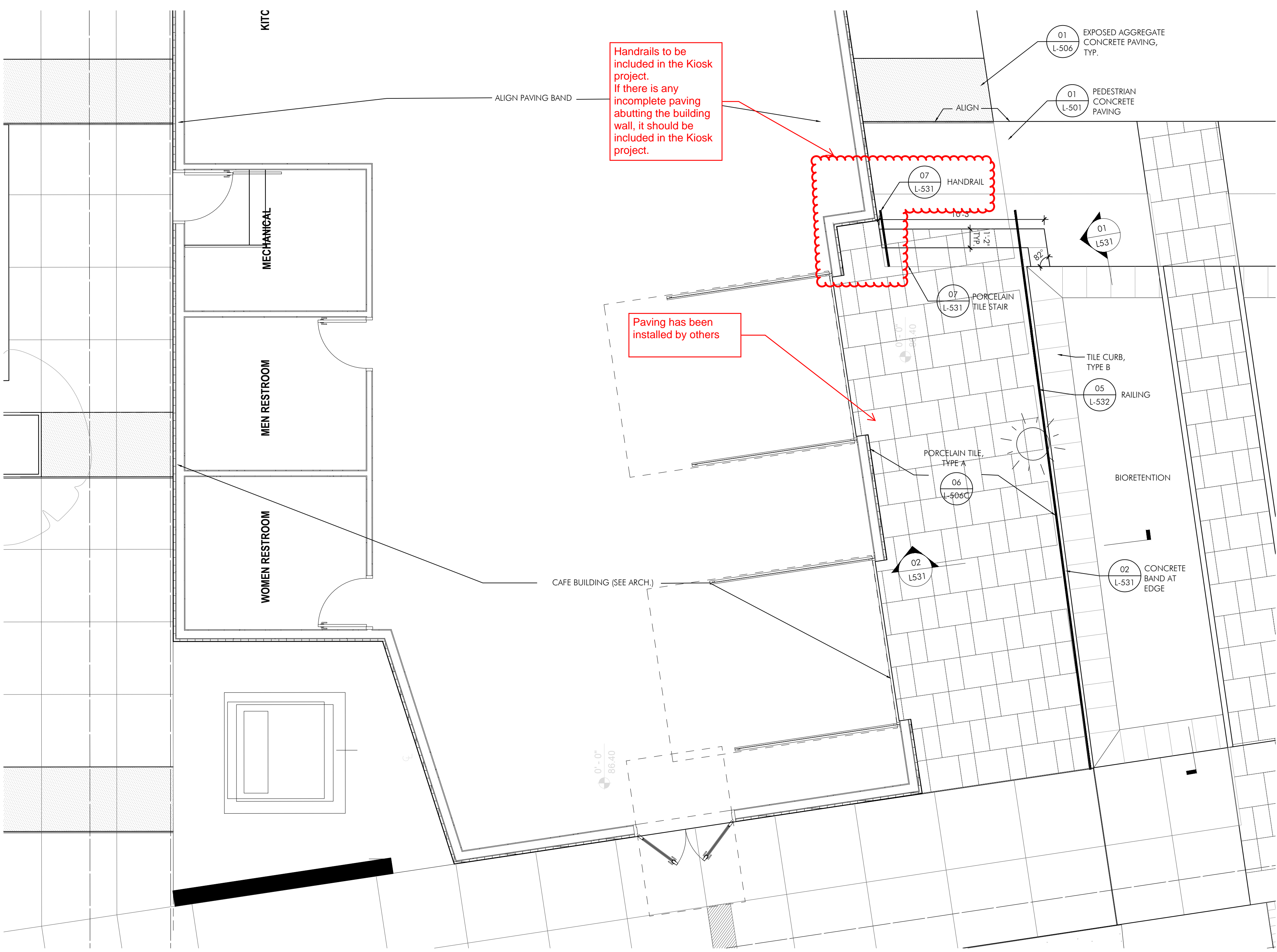
MATERIAL	TYPE	SIZE	COLOR	FINISH	MANUF./SUPPLIER
PORCELAIN TILE	TYPE A	24" X 24" (AREA RATIO: 66.66%) 12" X 24" (AREA RATIO: 33.33%)	BARGE GOLD	N/A	LANDMARK CERAMICS-FRONTIER 20
PORCELAIN TILE	TYPE B	18" X 36"	PIETRA DE BAGNOLO	N/A	LANDMARK CERAMICS-FRONTIER 20

PARKER RODRIGUEZ, INC.
 Planning | Urban Design | Landscape Architecture
 101 North Union St. #320
 Alexandria, VA 22314
 703.548.5010

OWNER
 Redevelopment Authority of Prince George's County
 9200 Basil Court
 Suite 504
 Largo, MD 20774
 301-883-5300



01 CENTRAL PARK CAFE ENLAREMENT PLAN
 1/4"=1'-0"



02 CENTRAL PARK CAFE ENLAREMENT PLAN
 1/4"=1'-0"

REVISIONS

△	CENTRAL PARK REVISION #10	09/01/20
△	CENTRAL PARK COORD. SET	06/30/21
△	CENTRAL PARK REVISION	03/29/22
△	KIOSK REVISION 1 - RFI RESPONSE	08/14/23

CENTRAL PARK CAFE ENLARGEMENT PLAN

ORIGINAL ISSUE DATE
 05.01.17

DESIGNED BY
 DC, SF

DRAWN BY
 YZ, YJ

CHECKED BY
 DC

NORTH

SCALE 1/4"=1'-0"
 0 2 4 FEET

General Note:
 This sheet is originally from the Suitland Phase 1B, 1C and 2 Landscape drawing set. Only the highlighted / clouded areas should be applied to the Kiosk building project. All other information is for reference only.

L-530

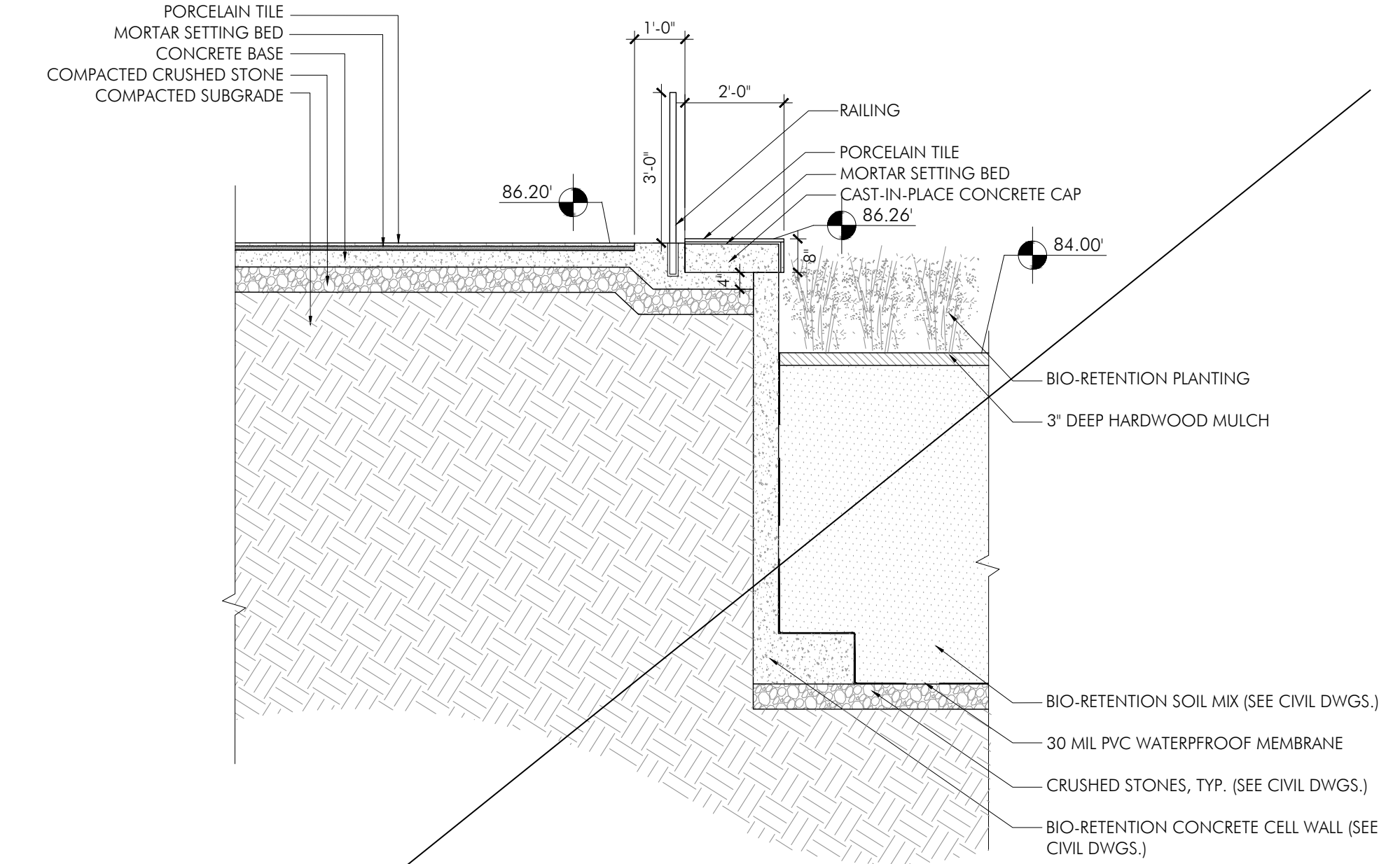
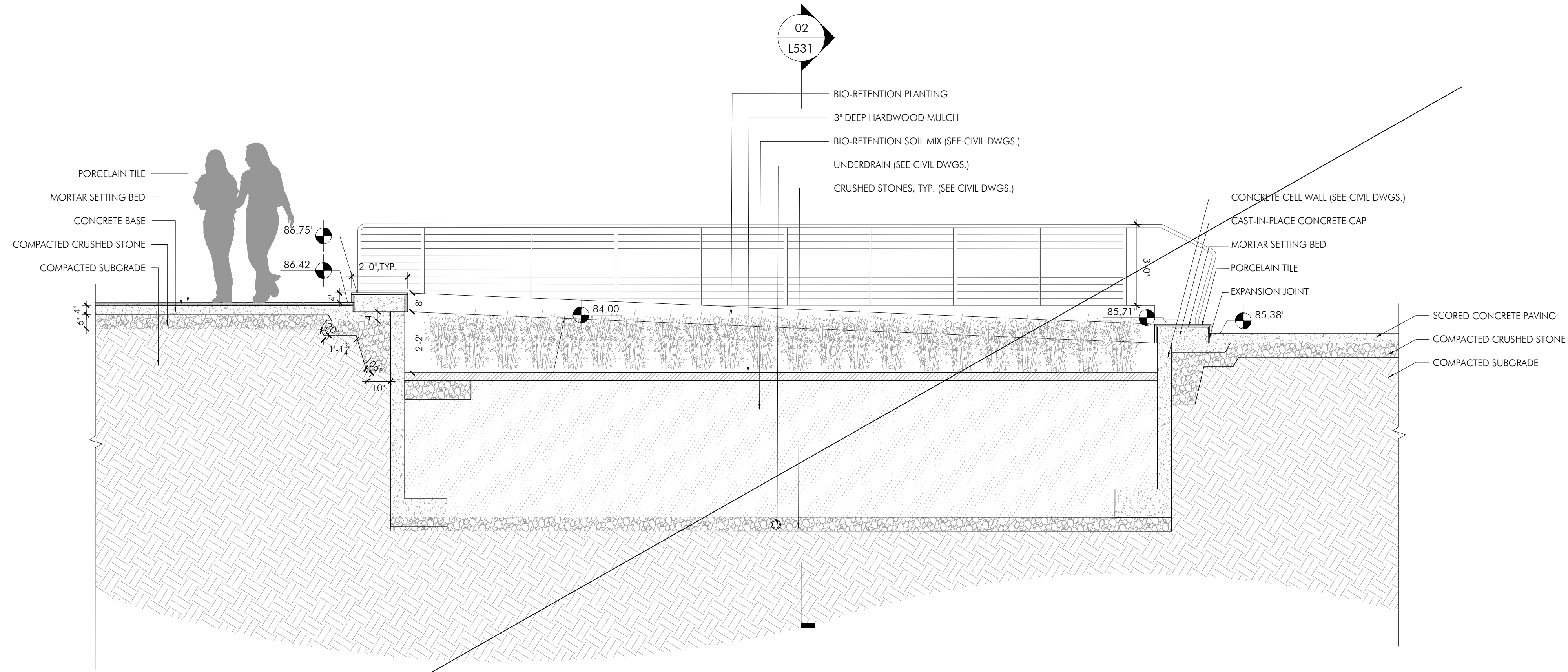
REVISIONS

CENTRAL PARK REVISION #10	09/01/20
CENTRAL PARK COORD. SET	06/30/21
CENTRAL PARK REVISION	03/29/22
KIOSK REVISION 1 - RFI RESPONSE	08/14/23

CENTRAL PARK CAFE DETAILS

ORIGINAL ISSUE DATE
 07/31/17
 DESIGNED BY
 DC, SF
 DRAWN BY
 YZ, YJ
 CHECKED BY
 DC

SCALE AS NOTED



01 KIOSK SECTION 1

3/8"=1'-0"

03 KIOSK SECTION 3 NOT USED

3/8"=1'-0"

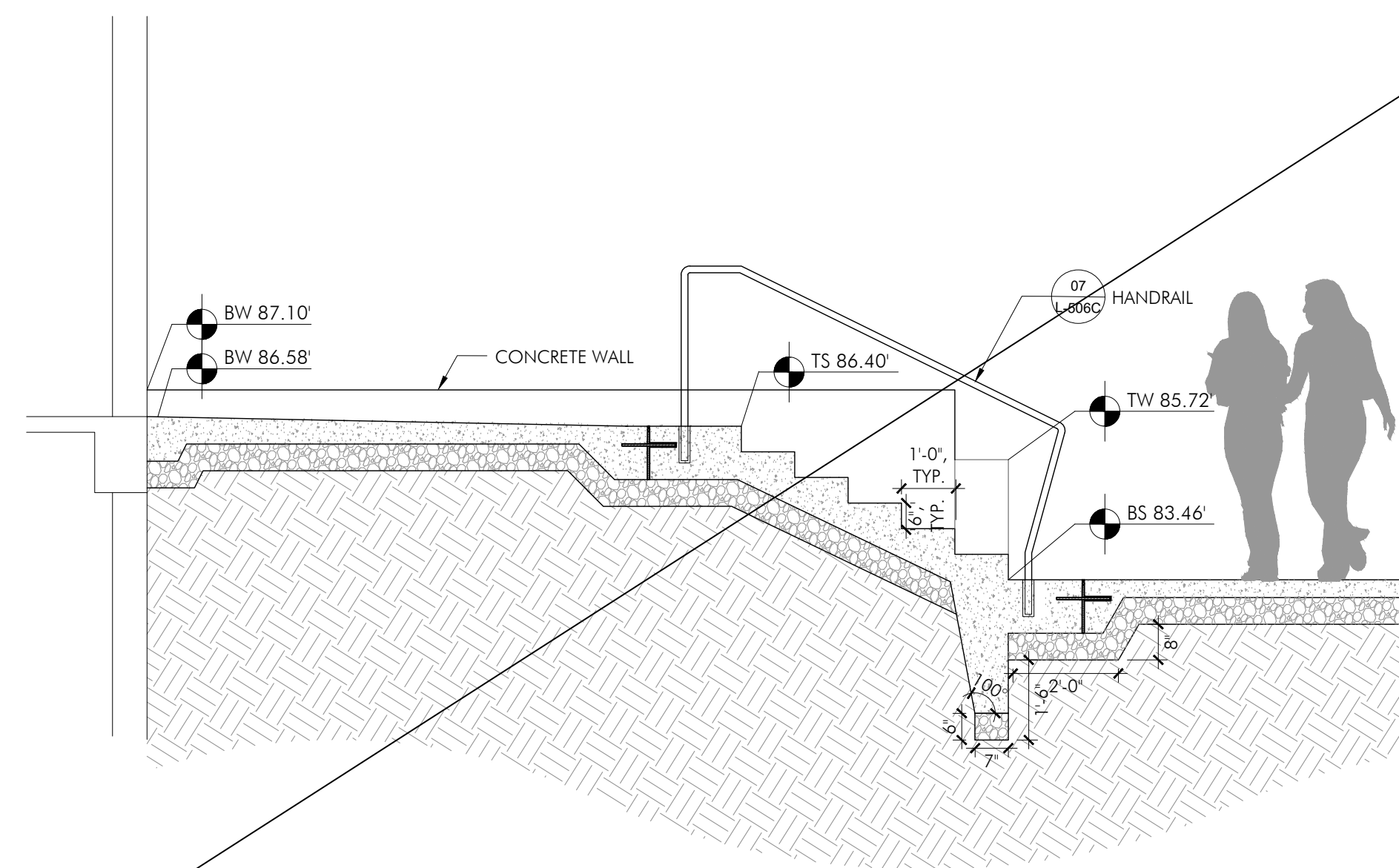
04 KIOSK SECTION 4 NOT USED

3/8"=1'-0"

02 KIOSK SECTION 2

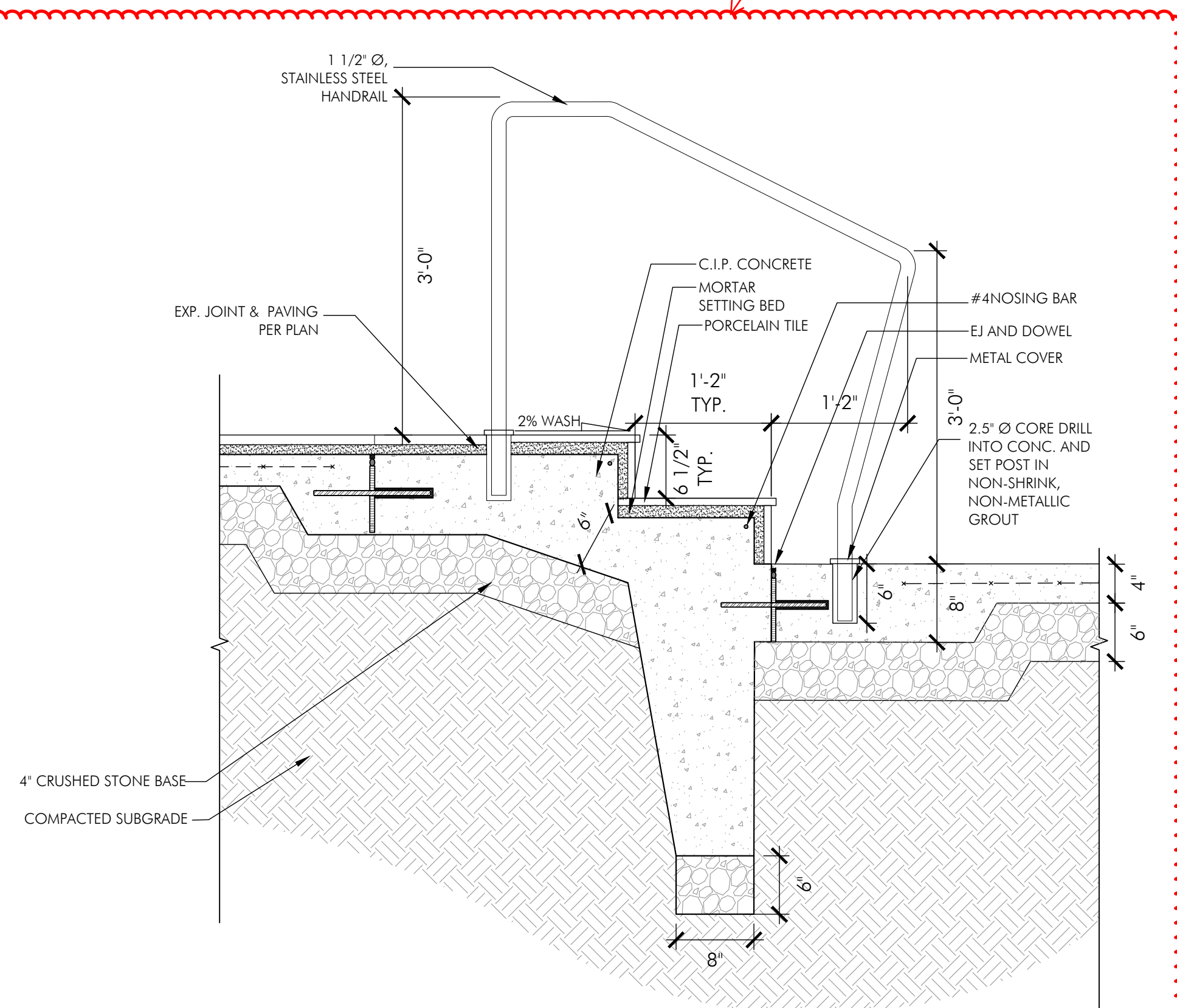
3/8"=1'-0"

Only this handrail detail to be included in the Kiosk project.



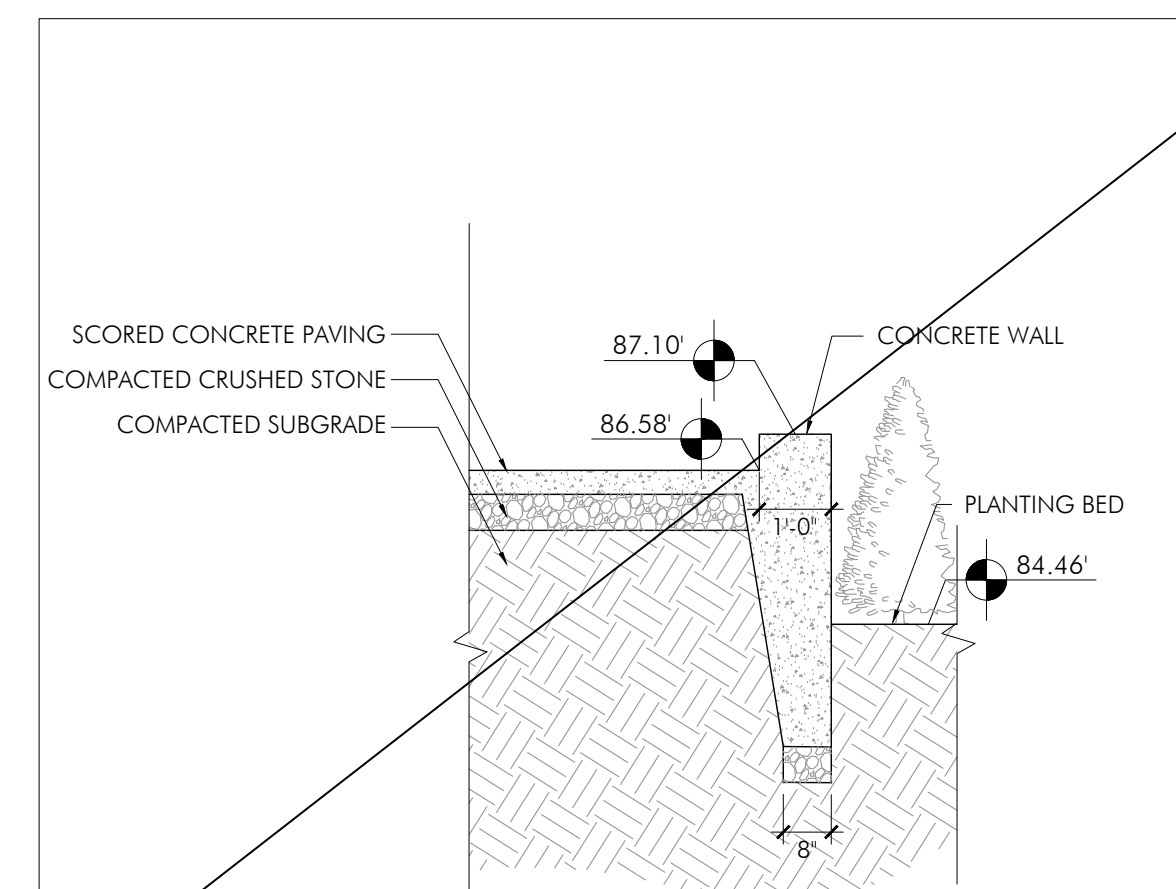
05 KIOSK SECTION 5

3/8"=1'-0"



07 PORCELAIN TILE STAIR

3/8"=1'-0"



06 KIOSK SECTION 6

3/8"=1'-0"

General Note:
 This sheet is originally from the Suitland Phase 1B, 1C and 2 Landscape drawing set. Only the highlighted / clouded areas should be applied to the Kiosk building project. All other information is for reference only.

