





Angela D. Alsobrooks
County Executive

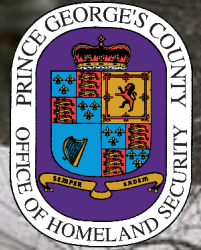


Michael D. Johnson, P.E.
Director

Snow Summit

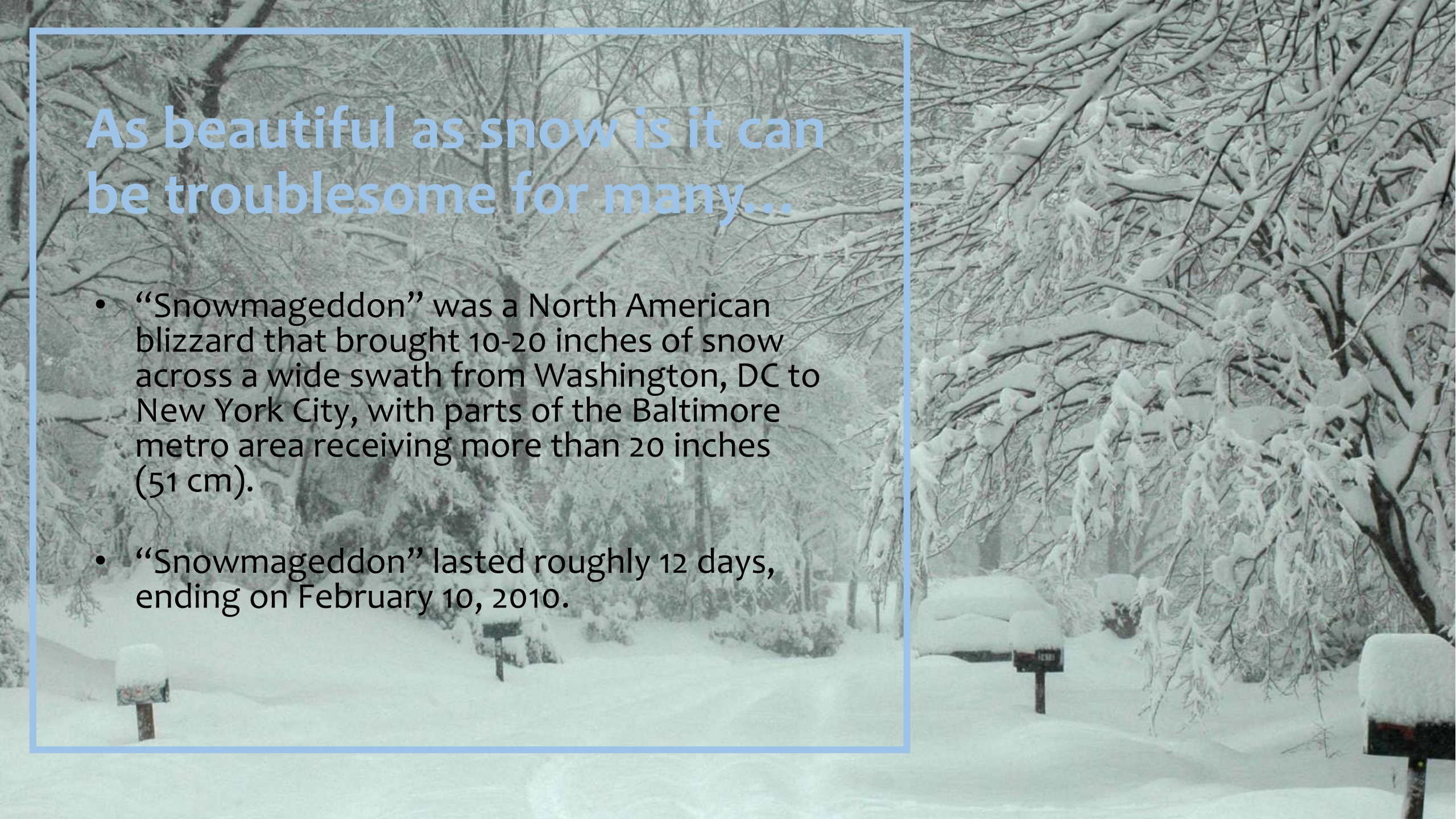
December 2022





EMERGENCY PREPAREDNESS: WINTER WEATHER

Prince George's County Office of Homeland Security/ Emergency Management Division



As beautiful as snow is it can be troublesome for many...

- “Snowmageddon” was a North American blizzard that brought 10-20 inches of snow across a wide swath from Washington, DC to New York City, with parts of the Baltimore metro area receiving more than 20 inches (51 cm).
- “Snowmageddon” lasted roughly 12 days, ending on February 10, 2010.

Driving In a Snowstorm

Roads that been plowed may be passable, but you still need to be cautious.



Unplowed roads are extremely dangerous and may be impassable by vehicle and even on foot.





Preparing Your Home

- Properly insulate walls and attics, caulk and weather-strip doors and windows, and install storm windows or cover windows with plastic.
- Clear rain gutters, repair roof leaks, and cut away tree branches that could fall on a house during a storm.
- Maintain heating equipment and chimneys by having them cleaned and inspected.
- Insulate pipes with insulation or newspapers and plastic and allow faucets to drip a little during cold weather to avoid freezing.
- All fuel-burning equipment should be vented to the outside and kept clear.
- Keep fire extinguishers on hand, and make sure everyone in your house knows how to use them.
- Learn how to shut off water valves (in case a pipe bursts).
- Check the condition of your roof for damaged, loose, or missing shingles.

Be Informed!

SIGN UP for Alert Prince George's to receive alerts and information about severe weather, major traffic disruptions, significant power outages, and flooded areas.

Visit alert.mypgc.us to register.

For additional information and resources, visit our Preparedness Center:

<https://www.princegeorgescountymd.gov/782/Preparedness-Center>

**Alert Prince George's is a free service. Check with your wireless provider to see if message and data rates apply.*

The graphic features a teal background with three circular icons connected by a white line. The first icon shows a clipboard with a checklist and a red checkmark. The second icon shows a red first aid kit with a white cross, a blue water bottle, and a blue portable radio. The third icon shows a smartphone with a yellow alert banner on the screen and signal waves. The text 'EMERGENCY PREPAREDNESS STARTS AT HOME' is at the top. Logos for Prince George's County and the Office of Emergency Management (OEM) are in the top corners. The bottom section has a grey background with the 'ALERT PRINCE GEORGE'S' logo and a sign-up call to action.

**EMERGENCY PREPAREDNESS
STARTS AT HOME**

MAKE A PLAN **BUILD A KIT** **STAY INFORMED**

Sign Up for ALERT Prince George's Today!
<https://alert.mypgc.us>

Q&A



@ PGCountyOEM



Prince George's County Snow Summit

Jerry Irvine, *Communications*

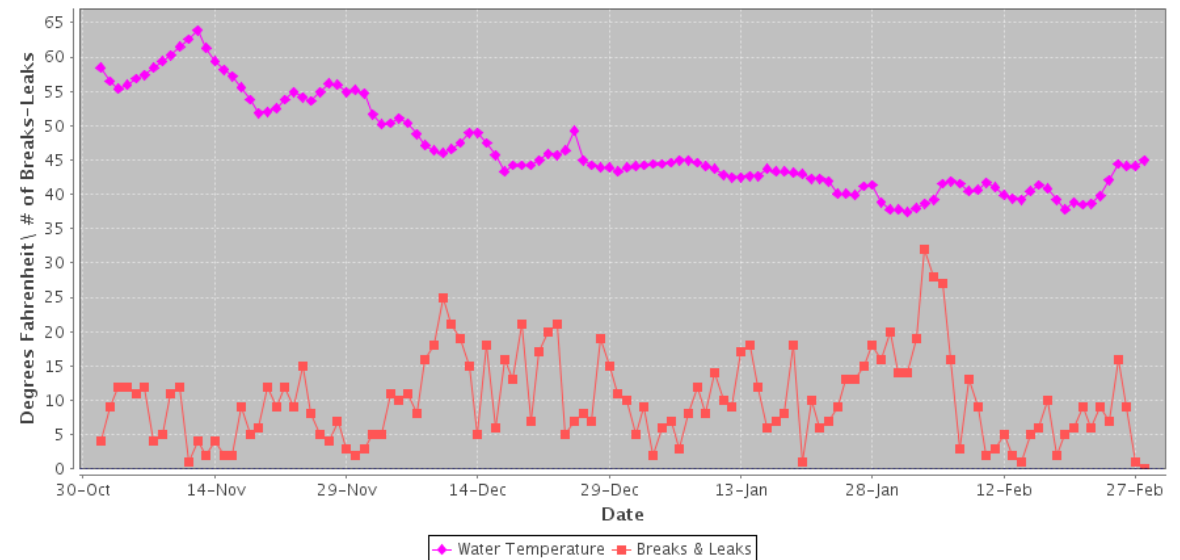
November 17, 2022

Winter is Water Main Break Season

- Temperatures drop = water main breaks increase
- Average approx. 1,800 water main breaks every year
 - 1,200 between November - February
- Breaks/leaks tied to Potomac River water temperature
 - Increase in breaks/leaks a few days after river temp hits a new low



Potomac River Water Temperature vs. Water Main Breaks and Leaks (11/01/2020 – 02/28/2021)



When a Water Main Breaks

Report A Problem



301-206-4002



**EmergencyCallCenter
@wsscwater.com**



**WSSC Water
Mobile App**



When a Water Main Breaks

The first step to repairing a water main break is YOU.

- 1 Report it to WSSC Water 301-206-4002
- 2 WSSC Water Inspector Dispatched
- 3 Miss Utility Notified
- 4 Valves Located & Closed
- 5 Broken Main Located, Dug up & Repaired
- 6 Excavation Site Filled in & Road Repairs Made



Be Prepared!

- Sign up for Customer Notification System to receive water/sewer emergency alerts
 - wsscwater.com/cns
- Know when a break is in your neighborhood so you prepare for water service disruption
- Water main break repairs can take approx. six hours
- Extended power outages can create water restrictions

An infographic titled "Be Prepared" with the subtitle "Make water part of your emergency kit." It contains three icons: a water bottle and glass, a family under a house, and a dog and cat. Below each icon is a text instruction: "1-2 Gallons water per person per day", "Store enough to last each person at least 3 days", and "Don't forget the pets!". At the bottom, there are social media icons for Twitter, Facebook, LinkedIn, and YouTube, each with the text "WSSCWaterNews", "WSSCWater", "WSSCWater", and "WSSCVideos" respectively.

Be Prepared
Make water part of your emergency kit.

1-2 Gallons water per person per day

Store enough to last each person at least 3 days

Don't forget the pets!

WSSCWaterNews WSSCWater WSSCWater WSSCVideos

Protect your Pipes

- Interior pipes and indoor water meters need area with temperatures of at least 55 degrees
- Tips
 - Turn off water to outside faucets, remove hoses and drain pipes
 - Repair leaky windows, doors and walls
 - Seal air leaks in crawl spaces and basement areas
 - Insulate outside walls
 - Open cabinets on cold nights to expose pipes to home's warmth
- wsscwater.com/winterready



Don't be Salty, Be Salt Wise

- Salt levels increasing in both drinking water sources: Potomac and Patuxent Rivers
 - Bad for aquatic life, pets, plants, lawns and people
 - Corrodes vehicles, concrete and water mains
 - Cannot be removed during filtration process
- Customers can do their part – Be Salt Wise
 - Shovel snow right away
 - Use less salt – 12-oz mug can cover large area
 - Sweep and reuse salt – Good for the environment and your pocketbook!
- wsscwater.com/saltwise

It's Easy as 1-2-3!

- 1 Shovel Right Away**
Clear pavement and driveways before snow turns to ice. 
- 2 Use Less Salt** If you must use salt, a 12-oz mug holds enough salt to treat a 20-foot driveway or 10 sidewalk squares. 
- 3 Sweep & Reuse**
Keep unneeded salt out of our waterways by sweeping and collecting for reuse. 

WSSC Water: Here to Help

- **Customer Assistance Program (CAP):** Provides credit up to \$112/year for fixed fees; Expanded eligibility for 67 years or older
- **Bay Restoration Fund (BRF) Fee Exemption:** Waives state-mandated fee up to \$60/year
- **Water Fund:** assistance with water/sewer bills, up to \$500/year
- **Flexible Payment Plans:** extended due dates and convenient payment plans
- **Bill Adjustments**
 - Available to residential customers once every three years under certain circumstances
 - CAP-approved customers may be eligible to remove 100% of excess water & sewer usage for one billing cycle in any three-year period.
- **PipeER:** Provides loan to finance residential water service line replacement

wsscwater.com/assistance





PRINCE GEORGE'S
COUNTY FIRE/EMS
DEPARTMENT

Put a FREEZE on Winter Fire Safety



Home Fires

- More home fires occur during the months of December, January and February.
- If your home is on fire Dial 911 from a safe location.
- Plan and Practice your families EDITH – Exit Drill in the Home – Know your 2 ways out.



Heating Equipment

Heating equipment is involved in **1 in very 7** home fires and **1 in every 5** home fire deaths.

- Keep ash in a covered metal container, keep it 10 feet away from the home.
- Have a licensed and approved chimney sweep inspect your chimney prior to use.



3 Feet Safety Zone

- **ALWAYS** keep anything that can burn at least 3 feet from any heat source. Keep combustibles away from heat sources: fire places, wood stoves, radiators and space heaters.
- **NEVER** use a space heater to dry clothing. This can lead to a fire.
- Keep space heaters at least 3 feet from furniture.



Portable Generators

- **ALWAYS** keep portable generators outside, away from windows and as far away as possible from the home.
- It is important to not keep them in the garage or carports. Carbon Monoxide CO can back up and enter the home.
- Carbon Monoxide CO is not visible, you cannot see it, smell it or taste it.



Smoke and CO Alarms

- **Everyone should have working Smoke and CO alarms in the residence.**
- **We ask that you test them monthly and have the newer 10 year sealed units installed.**
- **Both Smoke and CO now feature a 10 year sealed battery option.**
- **Install a carbon monoxide detector in your home if you have any appliances that are not electric and that burn natural or liquefied petroleum gas, oil, wood, coal, or other fuels, or if you have a home with an attached garage or carport.**



Kidney Dialysis & Emergency Preparedness

Tessa G. Livingston, RN, MSL
Planner, Public Health Emergency
Preparedness, Office of the Health Officer

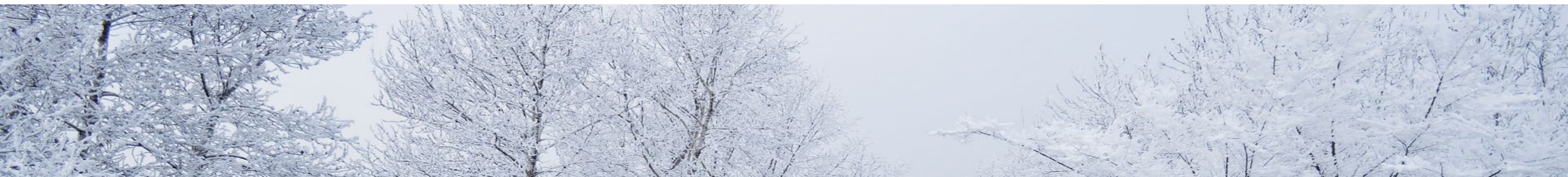
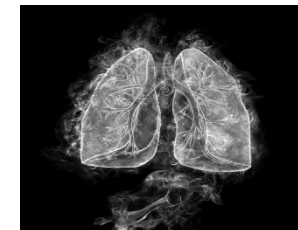
Prince George's County Health Department



Dialysis & Emergencies

Emergencies can happen anywhere at any time, and can have a direct impact on you and your ability to receive dialysis.

Take steps to prepare before an emergency occurs.

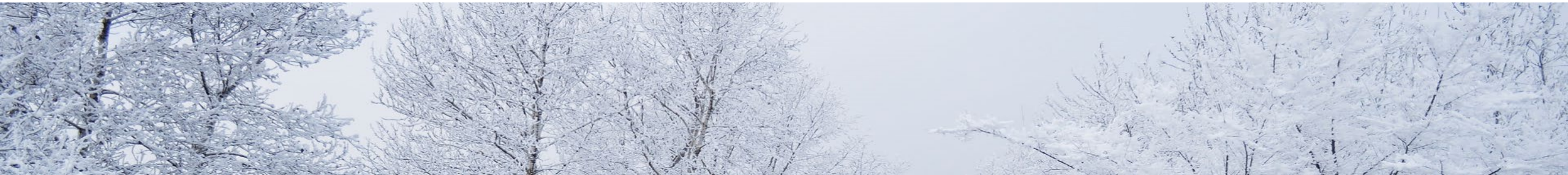



Personal Preparedness



Personal preparedness is important for everyone.

- Create a plan.
- Pack a kit.
- Get involved.





Winter storms can disrupt transportation services and prevent access to dialysis services.

- Contact your provider to arrange treatment prior to a forecasted event.
- Secure assistance from family and neighbors to plow private sidewalks and driveways.



Preparing for Winter Storms



Additional Resources

Emergency Preparedness for Dialysis Patients, <https://www.davita.com/kidney-disease/overview/living-with-ckd/emergency-preparedness-for-people-with-kidney-disease/e/4930>

Centers for Disease Control and Prevention, <https://emergency.cdc.gov/>

Department of Homeland Security's Ready Program, <https://www.ready.gov/>



Sidewalk Snow and Ice Removal Inspection Program Summary

2022-2023

Department of Permitting, Inspections AND
Enforcement

Program Requirements

- **Purpose**: The program implements the requirements of Section 23-150 of the County Road Ordinance regarding the timely removal of snow and ice from paved sidewalks.
- **Applicability**: The requirements apply to owners, tenants, and managers of commercial and residential properties with paved sidewalks adjacent to their properties which are accessible to the public and in close proximity to a public roadway.
- **Obligations**: Responsible parties must remove accumulated snow and/or ice of two inches or more from abutting sidewalks within 48 hours after snow has fallen or ice has accumulated as a result of inclement weather or runoff from abutting surfaces.

Focus Areas

- Adjacent to commercial establishments and apartment complexes – These facilities are the main focus of the program.
- Along roadways within 1.5 miles of a school
- Along State roads
- Along County primary roads
- Abutting major public gathering places, such as churches, assembly halls, etc.
- Complaints reported to PGC311
- Residential communities – In response to PGC311 complaints, reminder notices/door hangers will be placed on all homes along both sides of the block where violations are reported.

Sequence of Events

Snow/ice event triggering criteria – The program begins after two or more inches of snow and/or ice have accumulated.

24 hours after end of a major snow event – DPIE inspection teams observe assigned areas, issue reminder notices/door hangers and document results for the day.

48 hours after end of major snow event – DPIE inspection teams revisit assigned areas, issue violation notices/\$100 citations where appropriate and document the results for the day.

Note: This process repeats every day until there are less than two inches of snow and/or ice on sidewalks.

Thank you!

For more information, contact Daniel Dornan, Special Assistant to the DPIE Director, at dldornan@co.pg.md.us



WELCOME

**Euniesha Davis, Director
Office of Community Relations**

The Office of Community Relations ensures that County residents connect with government resources, agencies, and personnel. Our responsibility is to serve as a bridge between the government and its people.



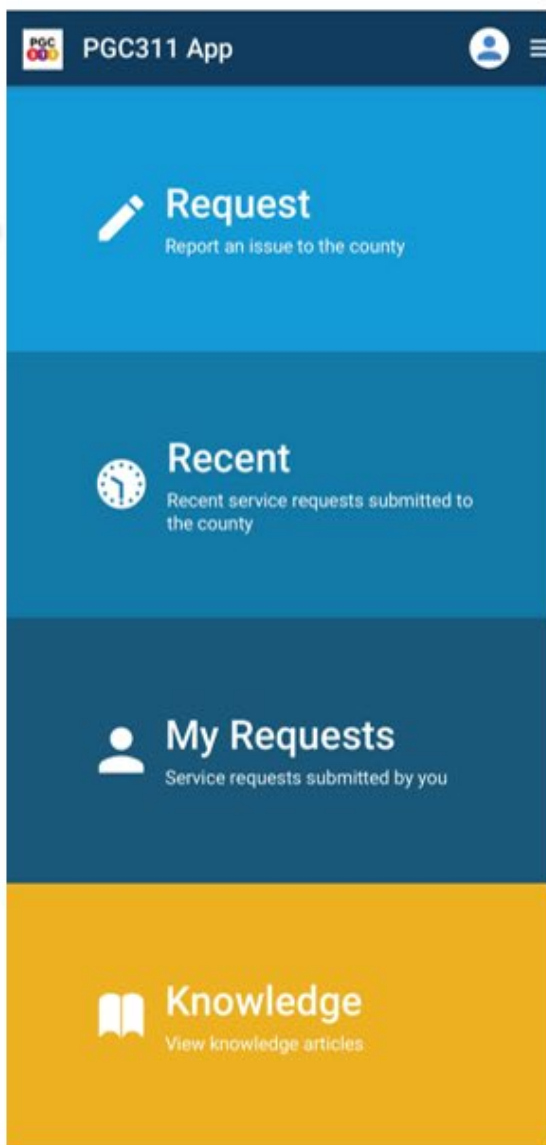
You Now Have Options

PGC311 Mobile App and Web Portal

- The new PGC311 mobile app and web portal, www.PGC311.com, are as easy and helpful as a call to the 311 Call Center and are available 24 hours a day 7 days a week!

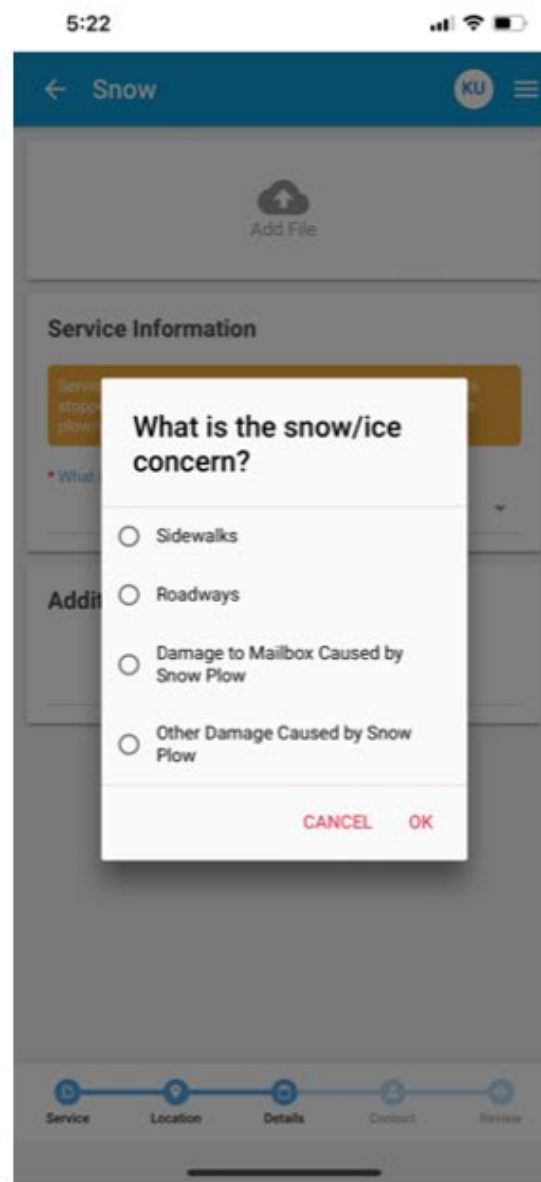
PGC311 Call Center

- The PGC311 Call Center is ready to assist during normal business hours.
 - Dial 3-1-1 or 301-883-4748
 - Monday through Friday,
 - 7 AM to 7 PM



Step 1: Click the Request tile to select your Snow Concern Option

Step 2: Select the option that reflects your snow concern
Sidewalks
Roadways
Damage to Mailbox
Other Damage.....



**Snow-Related
FAQs
&
Knowledge Base
Articles
Available for your
Information**





- **We want your feedback!**
- **Share your experience with using PGC311.**
- **You too can be a part of continuous improvement.**

Complete the customer and agency services SURVEY today!





Thank You!

Jennifer Hawkins

311onthego@co.pg.md.us

301-952-4729

 **@pgc_communityrelations**

 **@PGCCCommunity**





Prince George's County

DEPARTMENT OF THE
ENVIRONMENT

Andrea Crooms | Director

SNOW SUMMIT

**YOUR RECYCLING
AND TRASH
COLLECTION DAY**



THE NEXT DAY

All regularly scheduled
collections shift by one
day that week



**COLLECTION
SUSPENDED**



**COLLECTION
RESUMED**

In the event of severe weather conditions, residents should be aware that all scheduled bulky trash (appointment only), once-a-week trash, bulky and recycling, and yard trim/compost collections can be delayed or suspended due to road or weather-related conditions.

In the case of strong winds and rainy weather conditions, please secure your collection container lids and bins.

The County will make every effort to post any information regarding delayed or suspended collections on the County's website at mypgc.us or DoE's website at environment.mypgc.us. or you may contact **PGC311**.

If a **regular Friday collection** is suspended, that collection will occur on Saturday or Monday depending on weather conditions.

TUESDAY COLLECTIONS



THURSDAY

Tuesday Missed
Collections Pick-up



┌ ───┐
COLLECTION
SUSPENDED

COLLECTION
RESUMED

WEDNESDAY COLLECTIONS



FRIDAY

Wednesday Missed
Collections Pick-up



COLLECTION
SUSPENDED

COLLECTION
RESUMED

THURSDAY COLLECTIONS



SATURDAY

Thursday Missed
Collections Pick-up



COLLECTION
SUSPENDED

COLLECTION
RESUMED

FRIDAY COLLECTIONS



FOLLOWING MONDAY

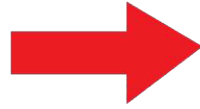
Friday Missed Collections
Pick-up (No yard
trim/compost collection)



┌ ───────────┐ ───────────┐ ┌ ───────────┐
COLLECTION
SUSPENDED

COLLECTION
RESUMED

MONDAY YARD TRIM COLLECTION



THE NEXT MONDAY



COLLECTION
SUSPENDED



COLLECTION
RESUMED

- **YARD TRIM**
Monday yard trim/compost collections suspended due to severe weather will be collected the following Monday.
- **BULKY TRASH**
Bulky trash collections suspended due to severe weather will be collected within seven (7) days.
- Residents will be contacted with a new collection date within that time frame.
- Remember that all collections can occur anytime from **6 a.m. to 8 p.m.**



Other Waste Collection Facilities and Services that could be impacted by severe weather include:

- Brown Station Road Sanitary Landfill
- Brown Station Road Residential Convenience Center
- Electronics Recycling Acceptance Site & Household Hazardous Acceptance Site
- Missouri Avenue Solid Waste Residential Acceptance and
- Recycling Center in Brandywine
- Prince George's County Organics Composting Facility
- Scrap Tire and Appliance Disposal Sites
- As a reminder, residents should remember to check the County's and DoE's website for up-to-date waste collection services during bad weather.
- Contact PGC311 for additional information.
- Visit bit.ly/pgccollectionweatherpolicy for waste collection tips to help you get through the winter months.



Angela D. Alsobrooks
County Executive



Michael D. Johnson, P.E.
Director



When the chilly temperatures of winter set in, will your vehicle be ready for the cold?

If you live in a part of the country that gets snow and ice, are you prepared to drive in those conditions? Planning and preventative maintenance are important year-round—but especially when it comes to winter driving.

Snow Summit
November 30, 2022

Andrea Lasker | Vision Zero Coordinator





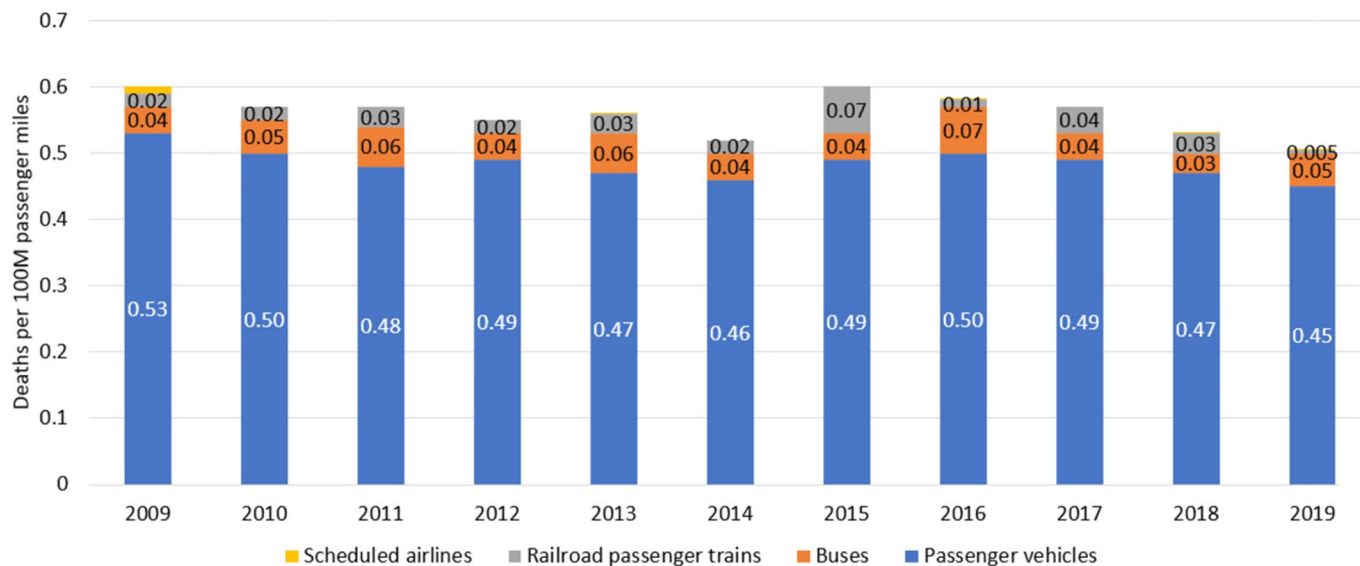
Angela D. Alsobrooks
County Executive

Deaths by Transportation Mode and Speed



Michael D. Johnson, P.E.
Director

Passenger vehicle death rate per 100,000,000 passenger miles was over 9 times higher than for buses, 17 times higher than for passenger trains, and 1,606 times higher than for scheduled airline.



SOURCE: Deaths by Transportation Mode - Injury Facts (nsc.org)

A small change in speed makes a big difference in survivability

Hit by a vehicle traveling at

23

MPH

10% risk of death



Hit by a vehicle traveling at

42

MPH

50% risk of death



Hit by a vehicle traveling at

58

MPH

90% risk of death



Image Source: FHWA



Angela D. Alsobrooks
County Executive

The Solution: Vision Zero



Michael D. Johnson, P.E.
Director

Safe Systems = Safe Mobility



System Planners & Policy Makers

Responsible for prioritizing safety in designs, policies



If road users make mistakes

Designs & policies analyzed for safety improvements

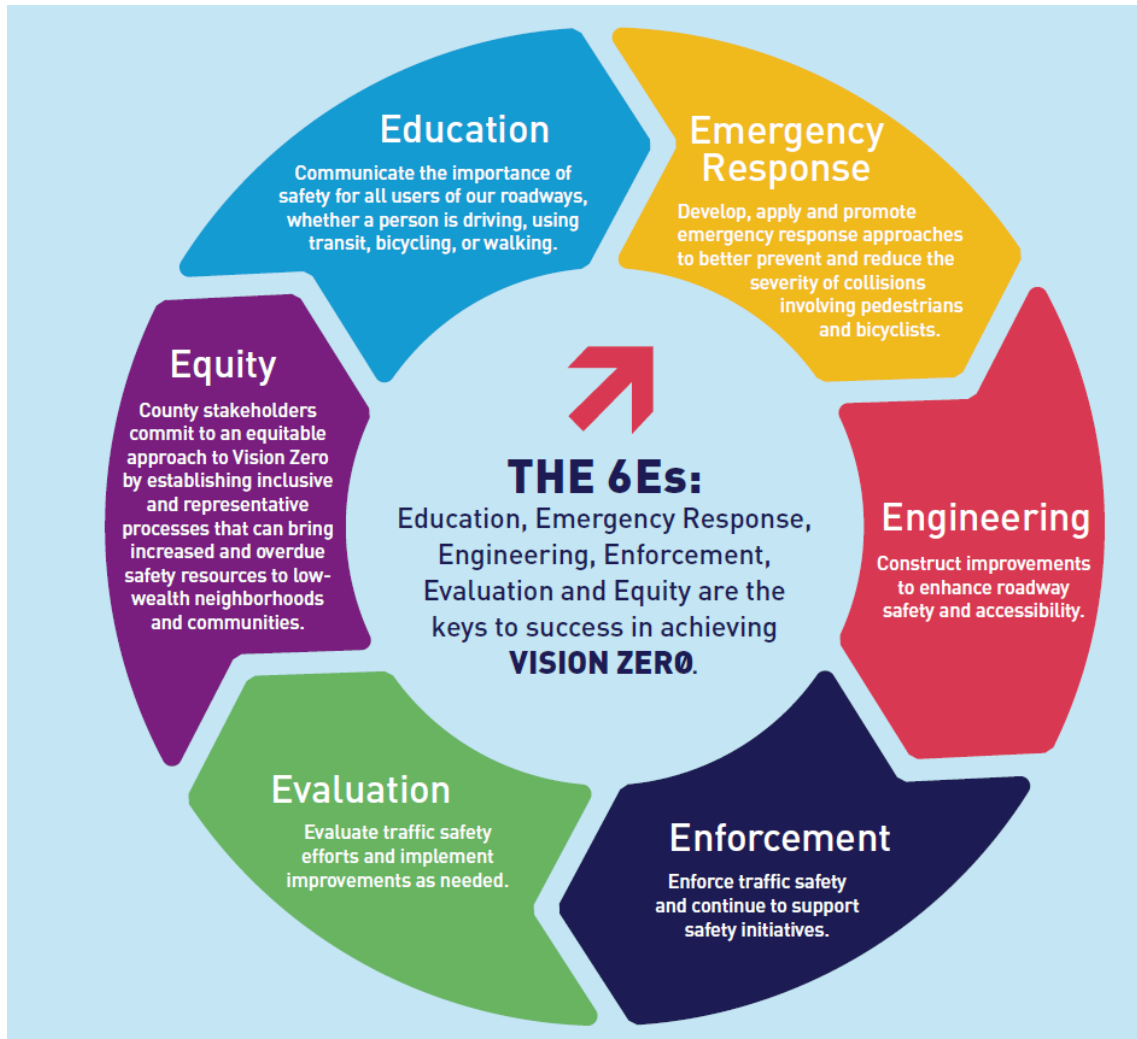


Individual Road Users

Responsible for following rules



Goal to Eliminate traffic related serious injuries and deaths by 2040



Vision Zero is a proven approach to preventing roadway-related deaths and severe injuries. It represents a fundamental change in how we plan and design our roads, shifting from a focus on maximizing motor vehicle efficiency to ensuring that our roads are safe regardless of whether travel is by car, bus, bicycle or foot.

Vision Zero recognizes that people will sometimes make mistakes and that our roads should be designed to ensure those inevitable mistakes do not result in severe injuries or deaths

www.VisionZeroPrinceGeorges.com



Angela D. Alsobrooks
County Executive

Data Driven Engineering Projects



Michael D. Johnson, P.E.
Director

VISIONZERO
prince george's
SAFE STREETS FOR EVERYONE.

Achievements
Completed July 2021 to June 2022

123 Neighborhood Traffic Management Program Studies Completed

1,835 Street Lighting Improvements

46 New Speed Humps

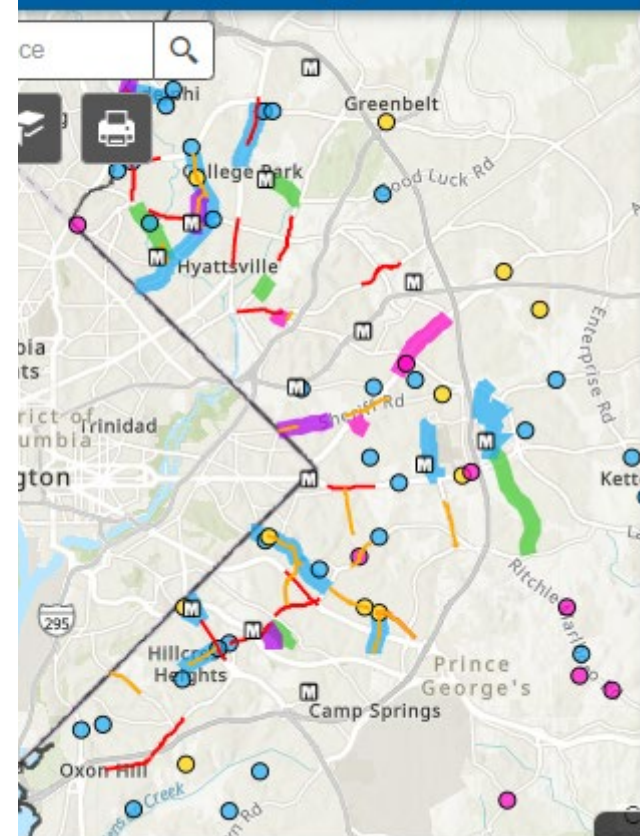
860,000 Square Feet of New and Replaced Sidewalk

5 Major Road Safety Projects Completed

- Ager Road Green Complete Street | Hyattsville
- Montpelier Drive | Laurel
- Marlboro Pike | District Heights
- Langley Park Area CASA Crime Prevention Coalition Project | Langley Park
- Sunnyside Avenue Bridge | Beltsville

18 Miles of Road Resurfaced

Prince George's Project Map



Legend

- County Roadway High Injury Network
- Vision Zero High Injury Network
- Vision Zero Localized Improvement Projects
 - Bike or Pedestrian Improvement
 - Roadway Safety Improvement
 - Signals, Signage and Lighting
- Vision Zero Corridor Improvement Projects
 - Bike or Pedestrian Improvement
 - Green/Complete Street
 - Road Safety Audit
 - Roadway Safety Improvement



Angela D. Alsobrooks
County Executive

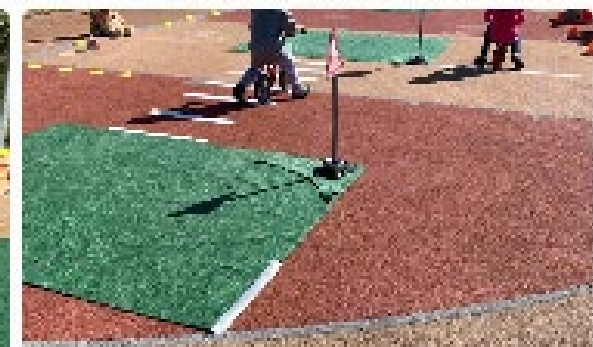
Multigenerational Approach



Michael D. Johnson, P.E.
Director



Families enjoyed the Vision Zero traffic garden at the 2022 Green Summit hosted by the Prince George's County Department of the Environment. Children practiced navigating streets and intersections in a safe space. #princegeorgesproud #visionzeroprincegeorges



World Day of Remembrance for Road Traffic Victims

November 20, 2022

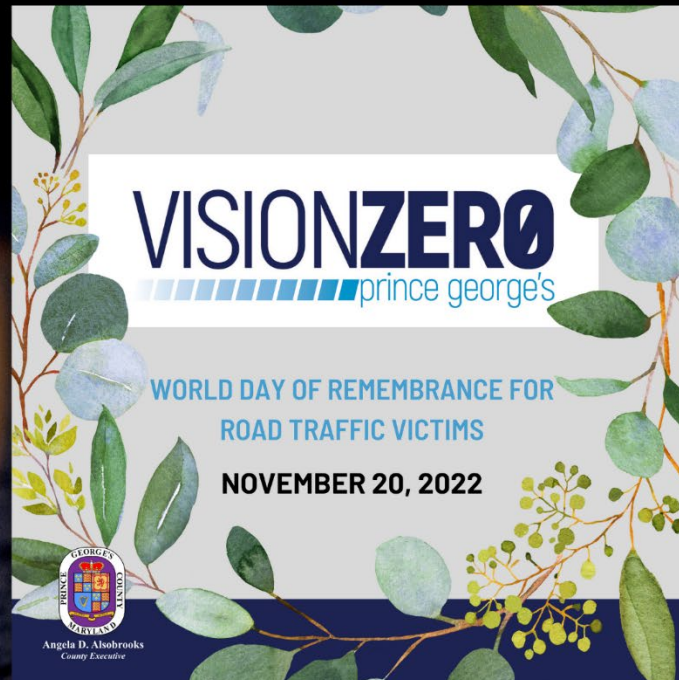
Please visit the
Street Smart
"Lives Shatter on Impact"
Testimonial Display

WHEN
November 20, 2022

WHERE
The Mall at Prince George's
3500 East-West Highway
Hyattsville, MD 20782

We can all play a part in making our roads safe for everyone.

Take the Vision Zero Safety Pledge
and learn more about Vision Zero Prince George's.





Angela D. Alsobrooks
County Executive

Stay connected with us!



Prince George's County
Department of Public Works & Transportation

Follow us @PGCountyDPWT to stay up to date!



Michael D. Johnson, P.E.
Director



SHARE THE ROAD.

MISSING SOMETHING?

WEAR A HELMET. EVERY TIME. EVERY RIDE.



Friends Help
Friends Get
Sober Rides
Home.



Just Drive.

Celebrate Responsibly.



Get a Sober Ride Home.

Always Buckle Up!
Every Seat. Every Ride.



Be the Driver You Want Your
Children to Be.

Focus on
the Road.

Buckle Up
What You Love

Every Seat.
Every Ride.



STOP
FOR BUSES



Helmets are for
All Ages.

Let's ALL get to our
destinations safely.

Speed Kills.
Slow Down.

Carrying
Precious Cargo?

- ✓ Find the Right Car Seat
- ✓ Correctly Install the Car Seat
- ✓ Drive Safe

School Zone
Safety

Drop Off and Pick Up

- Listen to the Crossing Guards, Police Officers and School Staff
- Never Drive Faster than a Child Can Walk
- Be Patient; Everyone's Time is as Valuable as Yours

Look Up and Look Out



for People Crossing.

Dropping Off or Picking Up Children at School?
Drive with Caution

- No U-turns or Double Parking
- Don't Back Up your Vehicle More Than One Car Length
- Check your Side Mirrors

Always Buckle Up!
Every Seat. Every Ride.



Plan Ahead.

NEVER DRINK
AND DRIVE.



Look Around and Share the Road



Drive Safely in School Zones

Always
Buckle Up!

Every seat.
Every ride.

WATCH FOR CYCLISTS.



Sometimes, "I love you" sounds like this:

"Don't text
and drive."



Get your rest
BEFORE
you get behind
the wheel.



DON'T PUSH
YOUR LUCK.

Designate a Sober Driver.

Need to Call or Text?



Pull Over to a Safe Location.

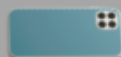


Just Drive.

Always Buckle Up!
Every Seat. Every Ride.



It Can Wait.



Slow Down
and Be Alert
in Work Zones.



MAKE ROOM
FOR CYCLISTS.

3 Feet

It's the Law.



Be the Driver You Want Your
Children to Be.

Focus on
the Road.



BE SEEN!

WEAR BRIGHT
OR REFLECTIVE
CLOTHING

WHEN WALKING AND BIKING.



Better Together



Share the Road
with Motorcyclists

and Check your Blind Spots.

Make the
PROMISE to

Buckle Up.
Drive Sober.
Be Safe.



Friends Help
Friends Get
Sober Rides
Home.

Let's ALL get to our
destinations safely.



Speed Kills.
Slow Down.

DPW&T VIRTUAL SNOW SUMMIT PRESENTATION

Wednesday, November 30th, 2022

MAINTENANCE SHOP WINTER OPERATIONS

- **HEAVY SNOW PHASE** – Shops provide full coverage. 6 team leaders per shop and their entire team of state employees and contractors work 24 hours during heavy snow fall.
- ▶ **District 3 Upper Marlboro Shop**
 - Approximately 145 vehicle units including 1 brine truck, tri-axle dump trucks, and a one-ton pickup with v box
 - spreaders. 4 Salt Facilities: Marlboro Shop Salt Dome, Jones Point Salt Barn, Priest Bridge Salt Barn,
 - TB Salt Barn.
- ▶ **District 3 Laurel Shop**
 - Approximately 179 vehicle units including 4 brine trucks, tri-axle dump trucks, and pickups with v box
 - spreaders. 4 Salt Facilities: Laurel Shop Salt Dome, Greenbelt Salt Barn, Metro Salt Barn and Tuxedo Salt Barn.



MAINTENANCE SHOP WINTER OPERATIONS

- ▶ **S.T.O.R.M.** -- Statewide Transportation Operations Response Map – **Snowplow Tracker Realtime Application**

This web-based tool keeps citizens informed about real time snow removal efforts. Citizens can input their address and see where snow trucks and plows are from there.

- ▶ **Location Data is Derived** from data transmitted over cellular networks. Not all pieces of equipment are equipped with local transmitters.

Winter Response Vehicles that appear on **S.T.O.R.M.** to be clustered at a single location are most likely being loaded, serviced, or are changing drivers

D3 IS S.T.O.R.M. Ready!



MAINTENANCE SHOP WINTER OPERATIONS

IMPORTANT SNOW SAFETY MESSAGES

- ▶ **We advise drivers not to pass snowplows or plow trains.**

The unplowed roads are ahead of the plows and the treated roads are behind them- this is the safest place to be.

- ▶ **We also ask motorists to clear snow completely off vehicles before driving.**

A clean vehicle provides increased visibility. Packed snow on car tops become dangerous projectiles following a storm.



Thank you.

CONTACT

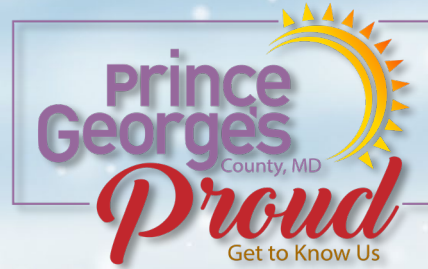
Winstina Hughes
Community and Government Customer Relations Manager
Prince George's County
WHughes@mdot.maryland.gov

Submit a Snow Service Request through CCMS
[New Service Request \(force.com\)](#)

Statewide Transportation Operations Response Map
[MDOT SHA S.T.O.R.M Application](#)



Angela D. Alsobrooks
County Executive



Michael D. Johnson, P.E.
Director

Snow and Ice Control 2022-2023 Snow Season Readiness

Presented by William B. Boyd
Associate Director, Office of Highway Maintenance



Angela D. Alsobrooks
County Executive

Snow Fighting Equipment



Michael D. Johnson, P.E.
Director



Contractor Trucks for the 2022-2023

Season: 160

County Fleet: 135

Park and Planning 10 Wheel Dump
Trucks: 7

Total: 302



Angela D. Alsobrooks
County Executive

Personnel



Michael D. Johnson, P.E.
Director

DPW&T Participation

Snowplow Operators: 155

Snow District Staffing: 65

Management and Administration: 32

Route Inspectors: 33

Equipment Maintenance: 11

Logistics: 18

Command Staff: 20

Vendor Inspection and Oversight: 18

Total: 287

Total

352



Sister Agency Participation

Landfill (DoE) Snowplow Operators: 15

M-NCPPC, Parks and Recreation: 50

Snowplow Operators: 36

Route Inspectors: 6

Management and Administration: 8

Requests for DPIE and CCS assistance remain unfulfilled



Angela D. Alsobrooks
County Executive

Snow Plan One Plan – Five Operations



Michael D. Johnson, P.E.
Director

Blizzard Operation

Snow accumulation that must be removed from the roadway with heavy equipment

Full Operation

Multiple day plowing operation with greater than 4 inches of snow predicted

Modified Operation

Plowing operation of 2-4 inches of snow

DPW&T Only Operation

Salting operation with less than 2 inches of snow

Snowflake Operation

Salting operation of icy spots, hilly areas and bridges



Angela D. Alsobrooks
County Executive

Who Reports



Michael D. Johnson, P.E.
Director

Blizzard Operation

All staff in the
plan report

Heavy
equipment
contractors
report

Full Operation

All staff in the
snow plan report

All plowing
contractors
report

Modified Operation

All field staff
report, including
DoE and
MNCPPC
Inspectors

Some
Contractors
report

DPW&T Only Operation

ONLY staff that
work for DPW&T
report

Snowflake Operation

DPW&T CDL
Drivers report



Angela D. Alsobrooks
County Executive

Accomplishing the Work



Michael D. Johnson, P.E.
Director

❖ Snow District 1

❖ Glenn Dale Maintenance Shop

7317 Northern Avenue, Glenn Dale

❖ Snow Districts 2, 3 and 5

❖ D'Arcy Road Maintenance Facility

8400 D'Arcy Road, Forestville

❖ Snow District 4

❖ Brandywine Maintenance Shop

12911 Cherry Tree Crossing Road, Brandywine





Angela D. Alsobrooks
County Executive

Service Priority



Michael D. Johnson, P.E.
Director

1. Pretreat primary and collector roads prior to snow event
2. Plow and treat primary and collector roads during snowfall
3. Move to plow and treat residential roadways after snowfall ends
4. Cul-de-sacs and dead-end roadways
5. Clear all roadways to "Complete" condition

Work in 12 hours shifts / 24 hours a day





Angela D. Alsobrooks
County Executive

Communicating Road Conditions



Michael D. Johnson, P.E.
Director

1. Snow Districts report road conditions to the Command Center twice per operational period. Information is collected from drivers and inspectors.
2. Automatic Vehicle Locator (AVL) staff track and report the status of individual trucks and overall progress of operations.
3. Command Staff move resources or, if applicable, call-in additional snow resources.
4. Public Information Officers use social media and DPW&T website to keep the public informed of progress and instructions.



Angela D. Alsobrooks
County Executive

Identify Snow Route Map and Area of Property




Michael D. Johnson, P.E.
Director

DPWT Public Snow Event Suite

Public DPWT Interactive Snow Map 3.0 Trip Center Public Portal

Find address or place



Welcome to Prince George's County - DPWT Public Snow Event Suite!

In this Suite you will find, the Interactive Snow Map 3.0, Public snow AVL site, and the state

I agree to the above terms and conditions

OK

Swipe to navigate the story

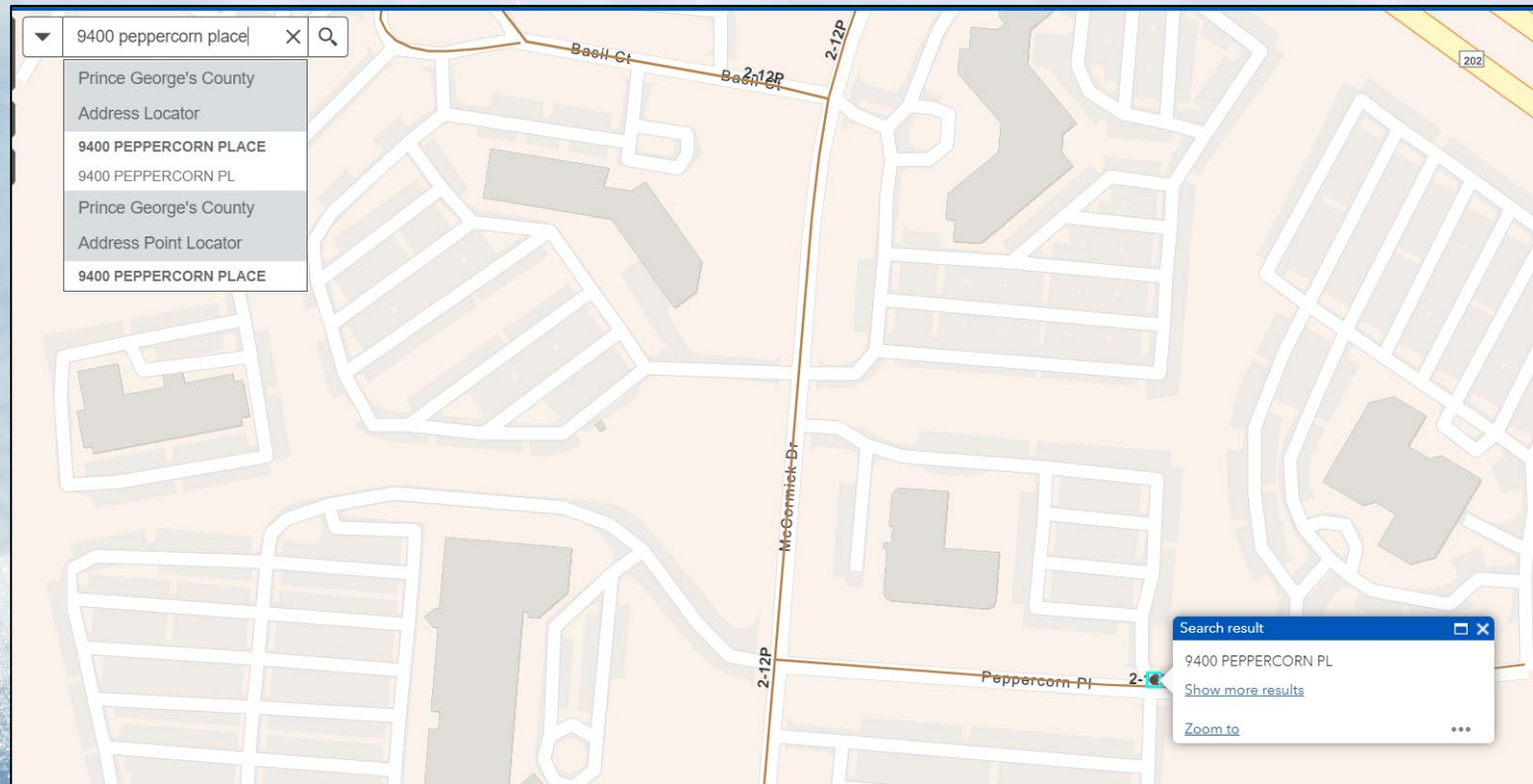
Public Interactive Snow Map

Next: Public Facing Snow Tracking Website



9400 peppercorn place

- Prince George's County Address Locator
- 9400 PEPPERCORN PLACE
- 9400 PEPPERCORN PL
- Prince George's County Address Point Locator
- 9400 PEPPERCORN PLACE



Search result

- 9400 PEPPERCORN PL
- Show more results
- Zoom to



Angela D. Alsobrooks
County Executive

PGCTrip.com



Michael D. Johnson, P.E.
Director

View County and State Highway Administration live traffic cameras

View current pavement temperatures

Visit the DPW&T Twitter page

The screenshot displays the PGCTrip.com website interface. On the left is a map of Prince George's County with various camera locations marked by colored pins. The main content area is divided into three columns:

- Cameras:** A list of camera locations including Adelphi Rd @ Metzman, Ardwick/Ardmore Rd @ Penney Dr, Conlee Rd @ Larchdale Rd, Garret A. Morgan Blvd @ Morgan Station, and Garret A. Morgan Blvd @ Edsfield Rd.
- Pavement Sensors:** Two sensor locations are shown:
 - PAINT BRANCH @ METRO PARKING:** Pavement Temperature: 39.0°. Avg: 39.0°, High: 39.0°, Low: 39.0°. Updated: 2020-01-27 19:10:19.
 - WHITFIELD CHAPEL @ ALCONA STREET:** Pavement Temperature: 34.0°. Avg: 31.0°, High: 34.0°, Low: 28.0°.
- Twitter:** Two tweets from @PGCountyDPW and @PGCountyDPWTRT regarding a TranspoCamp event.

At the bottom, there are three live video feeds from traffic cameras:

- I-85/485 AT EX 13:** Shows a multi-lane highway with traffic.
- NATIONAL HARBOR BRIDGE BLVD AT WATERFRONT ST:** Shows a view of the National Harbor Bridge Blvd.
- I-85/485 AT TEMPLE HILLS:** Shows a view of the highway at Temple Hills.



Angela D. Alsobrooks
County Executive

Prince George's County Snowplow Tracker



Michael D. Johnson, P.E.
Director

Prince George's County Gov't

Snow Plow Tracking
Last updated January 5, 2022 7:15 PM

Search address

Prince Georges County Snow Operations

- Serviced within the last 12 hrs
- Serviced within the last 12 to 24 hrs
- Serviced within the last 24 to 48 hrs
- Not Serviced within 48 hrs

Showing on map

Snow Plow Tracking

Prince Georges Operations

Map type

Dark Light

© Mapbox © Open



Angela D. Alsobrooks
County Executive



Michael D. Johnson, P.E.
Director

Stay connected with us!



Prince George's County
Department of Public Works & Transportation

Follow us @PGCountyDPWT to stay up to date!





Angela D. Alsobrooks
County Executive

Thank you!



Michael D. Johnson, P.E.
Director

