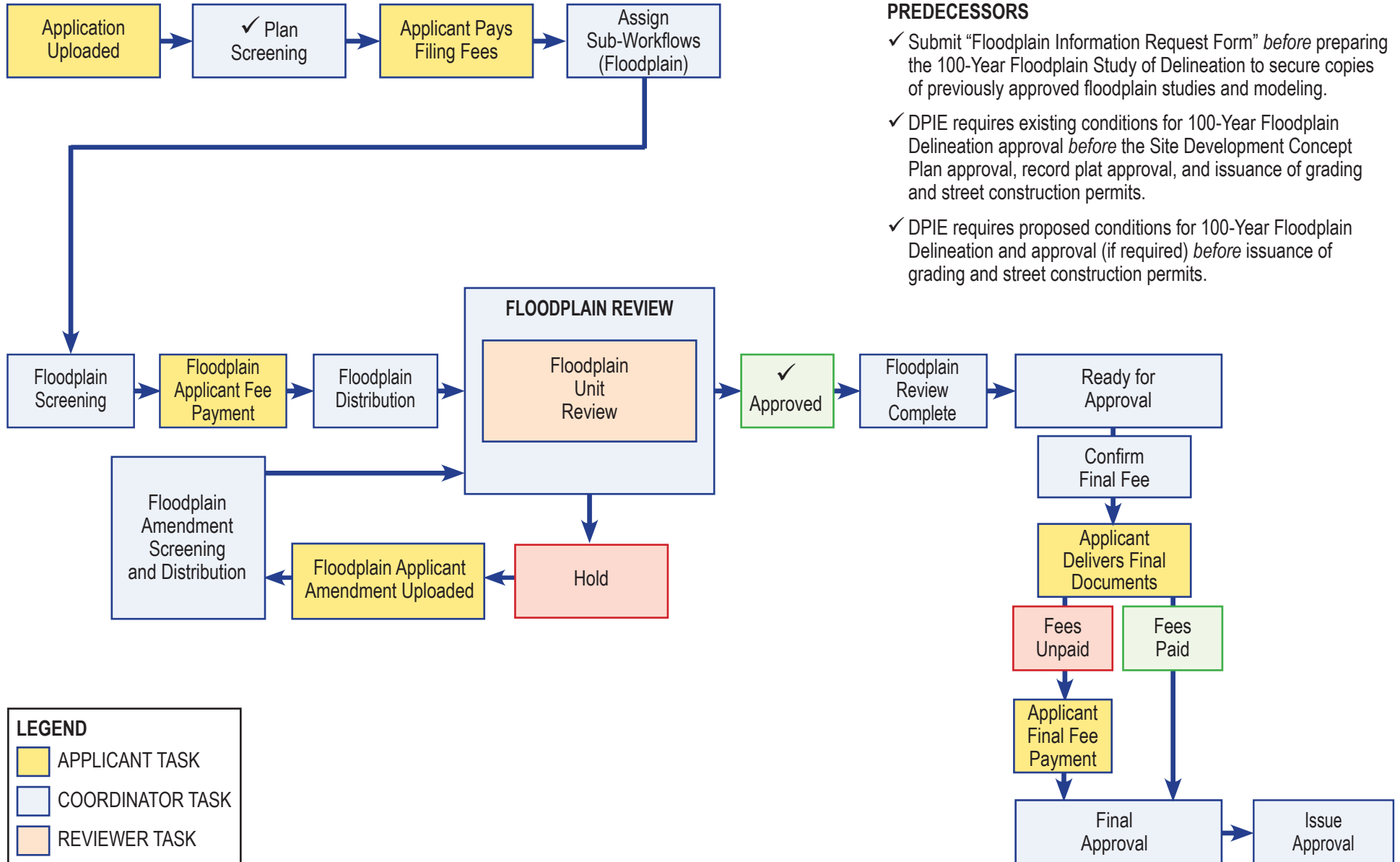




Angela D. Alsobrooks
County Executive

Site Road: Floodplain Approval — ePlan Workflow

Depending on the Scope of Work, a Project Will Be Reviewed by Several Agencies
Both Inside and Outside of DPIE Prior to Permit Issuance
(Below is the ePlan Workflow Chart of the Process)



PREDECESSORS

- ✓ Submit "Floodplain Information Request Form" *before* preparing the 100-Year Floodplain Study of Delineation to secure copies of previously approved floodplain studies and modeling.
- ✓ DPIE requires existing conditions for 100-Year Floodplain Delineation approval *before* the Site Development Concept Plan approval, record plat approval, and issuance of grading and street construction permits.
- ✓ DPIE requires proposed conditions for 100-Year Floodplain Delineation and approval (if required) *before* issuance of grading and street construction permits.